

| | | | |
|-------|----------------|-----------|--------------|
| STATE | PROJECT NUMBER | SHEET NO. | TOTAL SHEETS |
| GA. | | | |

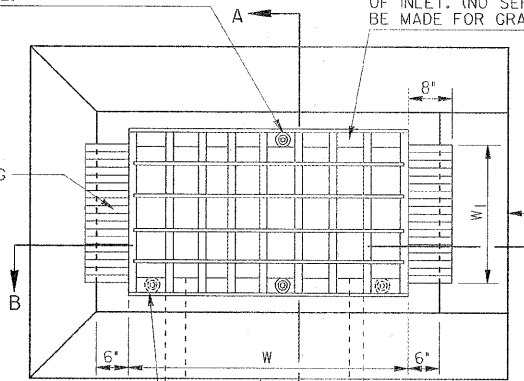
NOTE: MIN. "H" IS BASED ON TYPICAL OUTSIDE DIAMETER OF CONCRETE PIPES AND MAY BE REDUCED SLIGHTLY WHERE SPECIFIED IN THE PLANS, OR AS DIRECTED BY THE ENGINEER.

| PIPE SIZE | MIN. H* | NORMAL W | 75° SKEW W | 60° SKEW W | 45° SKEW W | MIN. H, IF CIRCULAR ALTER. (STD. 1040) IS USED |
|-----------|---------|----------|------------|------------|------------|--|
| 15" | 3'-0" | 2'-0" | 2'-0" | 2'-6" | 3'-0" | 3'-10" |
| 18" | 3'-6" | 2'-6" | 2'-6" | 3'-0" | 3'-6" | 4'-3" |
| 24" | 4'-0" | 3'-0" | 3'-0" | 3'-6" | 4'-0" | 4'-9" |
| 30" | 4'-6" | 3'-6" | 4'-0" | 4'-0" | 5'-0" | 6'-2" |
| 36" | 5'-0" | 4'-0" | 4'-6" | 5'-0" | 6'-0" | 6'-9" |
| 42" | 5'-6" | 5'-0" | 5'-0" | 5'-6" | 6'-6" | 7'-4" |
| 48" | 6'-0" | 5'-6" | 5'-6" | 6'-0" | 7'-6" | 7'-11" |

* FOR LONGITUDINAL PIPE OVER 18" WITH A 2'-0" DITCH, OR A LONGITUDINAL PIPE OVER 36" WITH A 4'-0" DITCH, AN ENLARGED BASE IS REDUCED TO W₁ = DITCH WIDTH WITH APPLICABLE MIN. H IN COLUMN AT EXTREME RIGHT.

1/2" x 6" GALV. ANCHOR BOLT, NUT AND WASHER-STANDARD LOCATION IS APPROX. CENTER OF GRATE WITH ONE BOLT EACH SIDE.

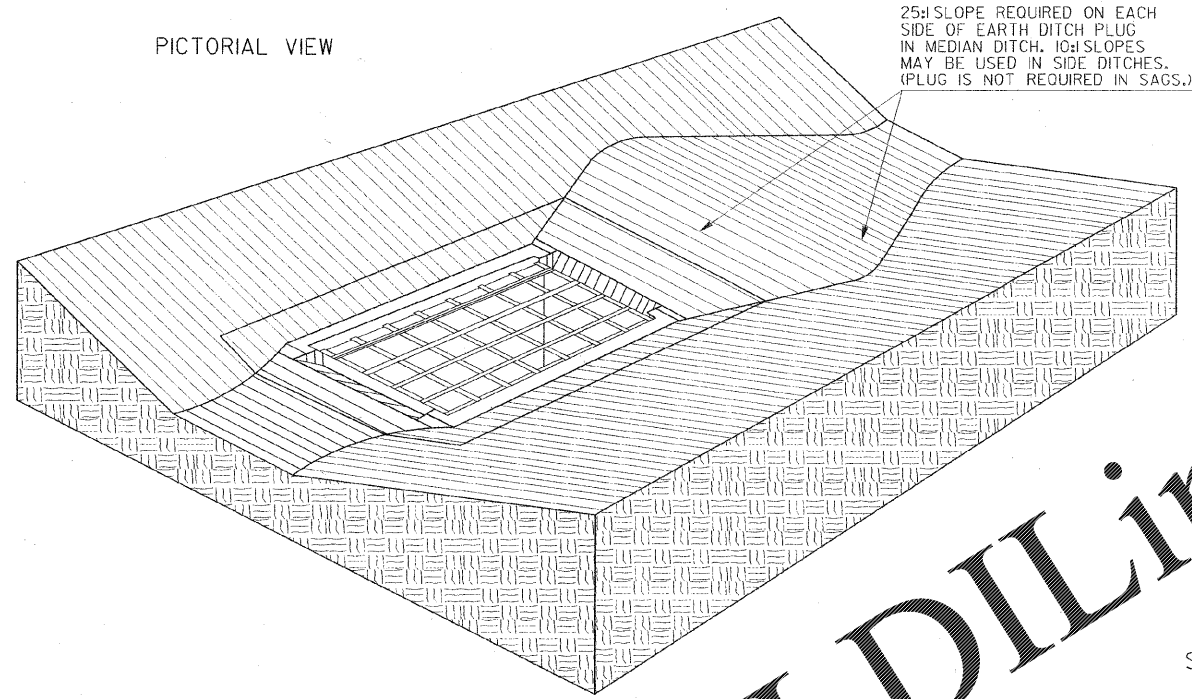
SEE GRATE FABRICATION DETAILS FOR BAR SIZES, ANGLE IRON SIZE AND WELDING DETAILS. GRATE WILL BE INCLUDED IN PAYMENT OF INLET. (NO SEPARATE PAYMENT WILL BE MADE FOR GRATE.)



ALTERNATE LOCATION FOR BOLTS IF NEEDED BECAUSE OF SMALL "H". TWO BOLTS ON SIDE WITH PIPE. MIN. OF THREE BOLTS TOTAL, IF ALTERNATE LOCATION IS USED.

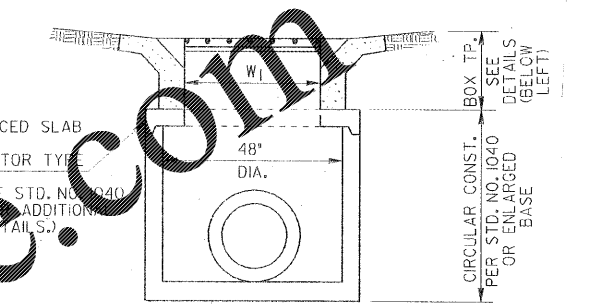
* PARABOLT CONC. ANCHOR BOLTS (P B12-514) OR PHILLIPS RED HEAD (WW-1254), OR AN EQUAL 1/2" DIA. GALVANIZED ANCHOR TYPE BOLT, WHICH HAS BEEN APPROVED BY THE GA. D.O.T. LABORATORY MAY BE USED INSTEAD OF THE BOLT SHOWN. ALL SUCH ALTERNATES ARE TO BE INSTALLED AS RECOMMENDED BY THE MANUFACTURER.

PICTORIAL VIEW

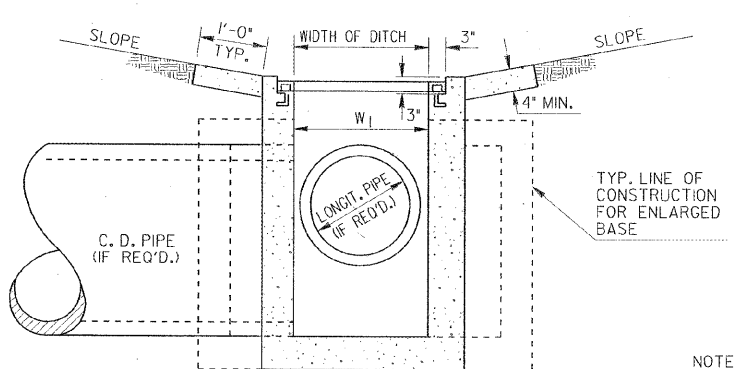
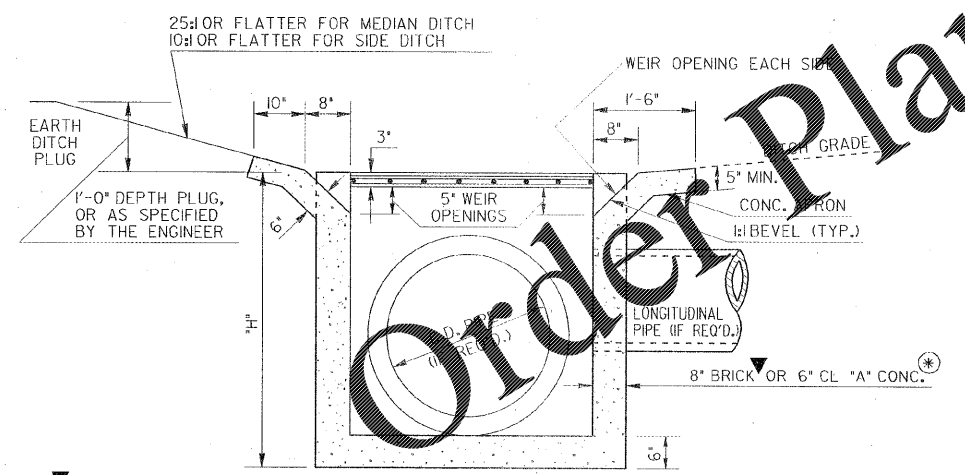
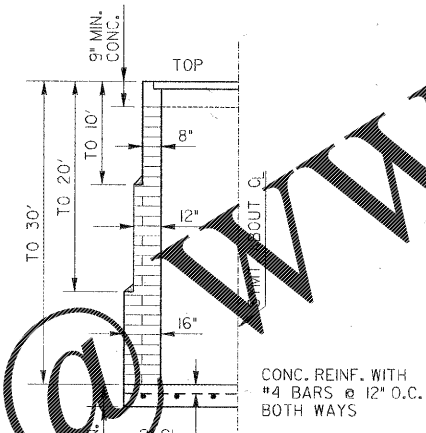
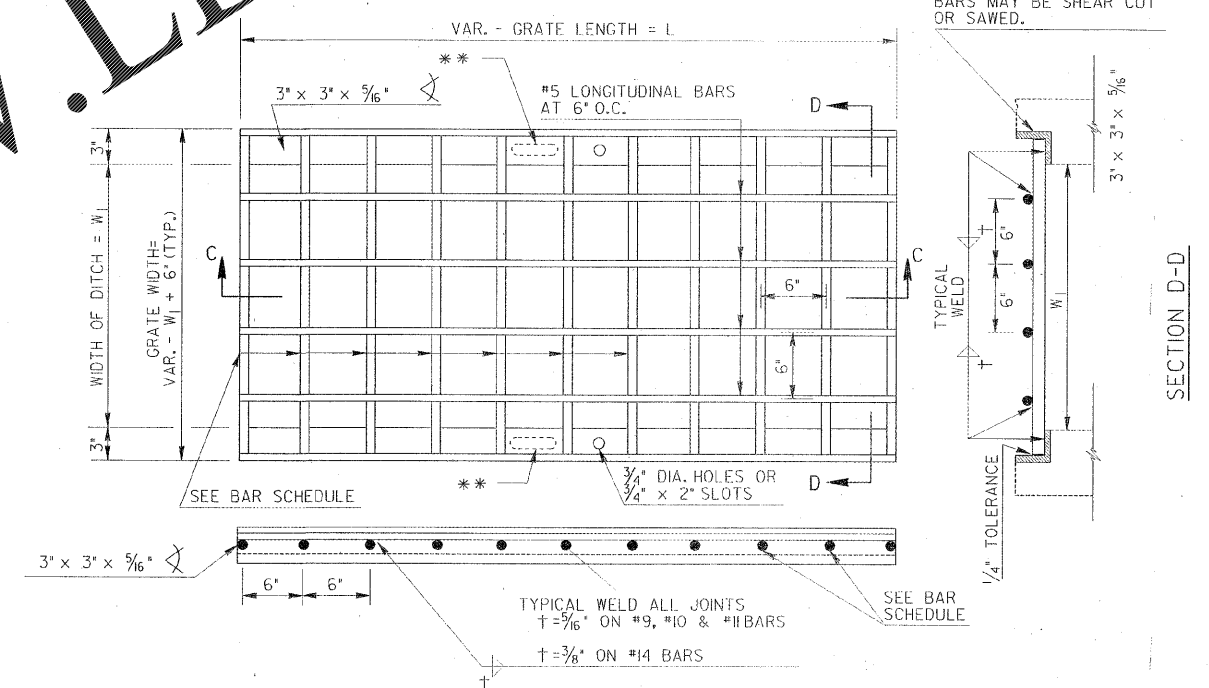


25% SLOPE REQUIRED ON EACH SIDE OF EARTH DITCH PLUG IN MEDIAN DITCH. 10% SLOPES MAY BE USED IN SIDE DITCHES. (PLUG IS NOT REQUIRED IN SAGS.)

| DROP INLET WITH CIRCULAR BASE | | | |
|-------------------------------|---------|--------------------|----------------------|
| OULET PIPE | ADAPTOR | W X W ₁ | GRATE SIZE (L. X W.) |
| TO 18" | TP. 3 | 2'-0" X 2'-0" | 2'-0" X 2'-6" |
| TO 30" | TP. 2 | 3'-0" X 2'-0" | 3'-0" X 2'-6" |



SAFETY GRATE FABRICATION DETAILS



| W ₁ | GRATE TYPE | BAR SIZE |
|----------------|------------|----------|
| 1'-6" TO 2'-0" | 1 | #9 |
| 2'-6" | 2 | #10 |
| 3'-0" TO 3'-6" | 3 | #11 |
| 4'-0" TO 4'-6" | 4 | #14 |

** ALTERNATE: INSTEAD OF 3/4" DIAMETER HOLE, A 2" x 3/4" OVAL HOLE MAY BE PROVIDED.

NOTES FOR GRATE:
 FABRICATOR WILL ARRANGE FOR TESTING BY THE GA. D.O.T. LABORATORY 14 DAYS PRIOR TO FABRICATION.
 ALL BARS SHALL MEET THE REQUIREMENTS OF AASHTO M 31GRADE 60.
 ALL LONGITUDINAL BARS WILL BE #5 BARS.
 GRATE BAR SPACINGS SHOWN ARE "NOMINAL-MINIMUM" AND MAY BE INCREASED (UP TO 10% TYPICAL) WITH NO ADDITIONAL PAYMENT TO PROVIDE BEST FIT FOR STRUCTURE.

| | | | |
|----------|--|------------------------------|------------|
| DATE | | DEPARTMENT OF TRANSPORTATION | |
| | | STATE OF GEORGIA | |
| REVISION | | CONSTRUCTION DETAILS | |
| | | DITCH DROP INLET | |
| | | WITH FABRICATED SAFETY GRATE | |
| | | AND WEIR OPENINGS | |
| | | NO SCALE | OCT., 2000 |
| BY | DES. (SUBMITTED) | NUMBER | |
| | DRW. STATE ROAD & AIRPORT DESIGN ENGR. | D-4 | |
| | TRA. (APPROVED) | | |
| | CHK. CHIEF ENGINEER | | |