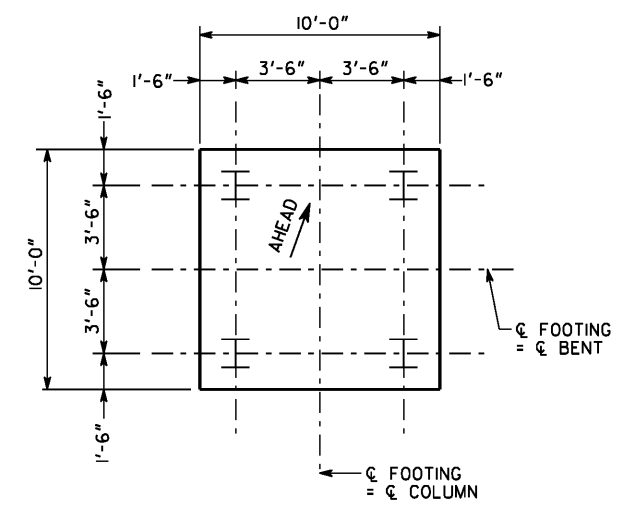
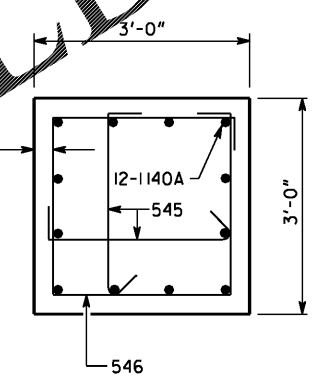
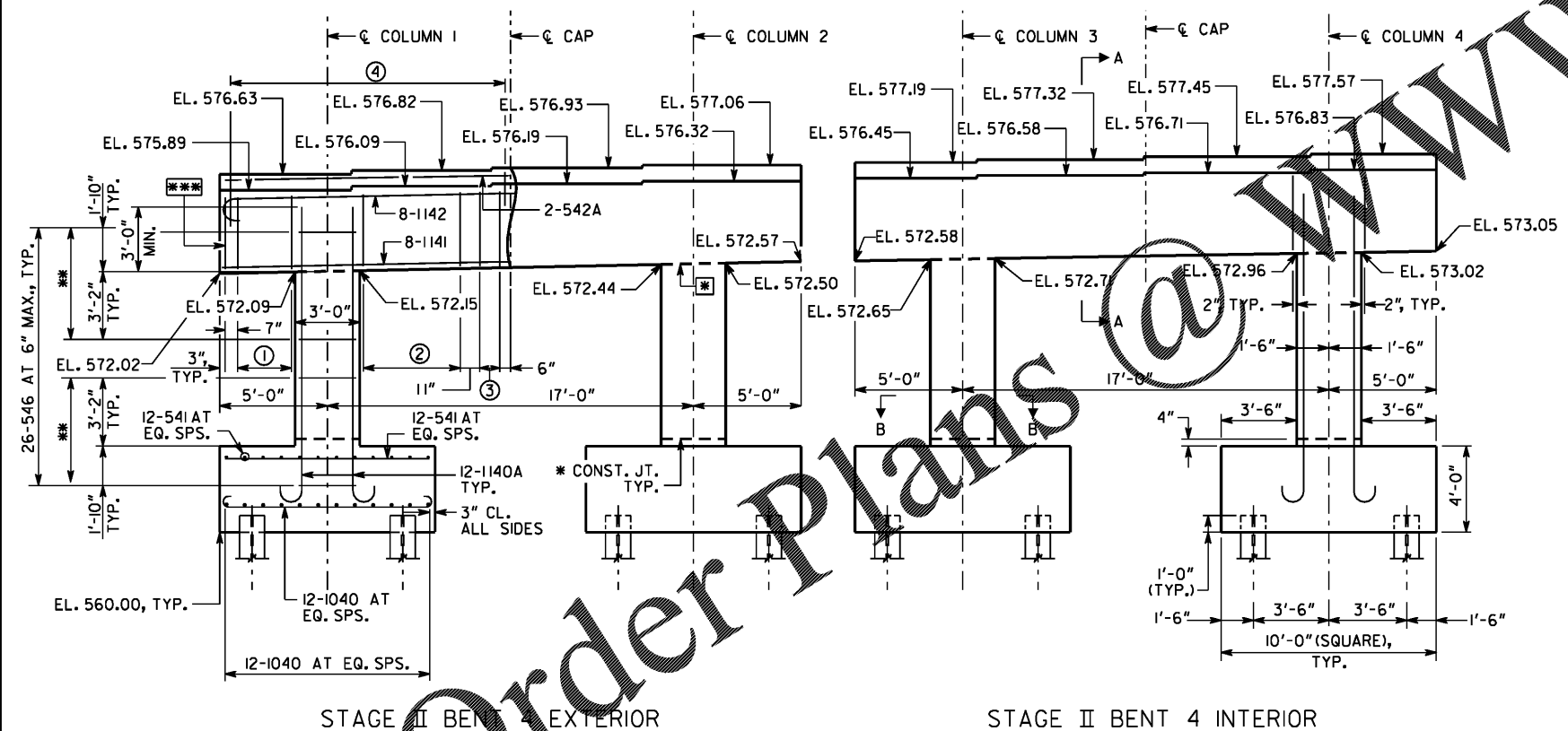


- *** OPTIONAL CONSTRUCTION JOINT. POUR WITHIN 12 HOURS.
- ⊗ FORM 3" DIAMETER X 12" DEEP HOLE FOR DOWEL BAR.



NOTES:

1. CAP REINFORCEMENT SYMMETRIC ABOUT ϵ CAP. CAP REINFORCEMENT IS IDENTICAL.
2. ALL COLUMNS ARE IDENTICAL. COLUMN REINFORCEMENT IS IDENTICAL FOR ALL COLUMNS.
- *** 3. 11 LOCATIONS OF 545 CROSSTIES AT EACH 546, EACH DIRECTION, ALTERNATE HOOK ENDS AT ADJACENT VERTICAL LOCATIONS.
4. 543A BARS ARE NOT SHOWN IN ELEVATION
- * 5. AT CONTRACTOR'S OPTION CONST. JOINT MAY BE RELOCATED TO TOP OF FOOTING.
6. ALL FOOTINGS ARE IDENTICAL. FOOTING REINFORCEMENT IS IDENTICAL FOR ALL FOOTINGS.

ALL PILES SHALL BE STEEL H, HP 14 X 117.
 PILES ARE DESIGNED FOR A MAXIMUM FACTORED AXIAL LOAD OF 362 KIPS.
PLAN DRIVING OBJECTIVE
 ALL PILES SHALL BE DRIVEN TO A DRIVING RESISTANCE OF 551 KIPS AFTER A MINIMUM TIP ELEVATION OF 530 IS ACHIEVED.

- ⊙ 6 LOCATIONS OF 2-540A AT EACH LOCATION AT 6" SPACING
- ⊙ 10 LOCATIONS OF 2-540A AT EACH LOCATION AT 6" SPACING
- ⊙ 2 LOCATIONS OF 2-540A AT EACH LOCATION AT 11" SPACING
- ⊙ 14 LOCATIONS OF 442 AT EACH LOCATION AT 12" SPACING MAX.
- *** 1 LOCATION OF 2-540A
- ⊗ REQ'D CONST. JT. TYP.

SUBSTRUCTURE QUANTITIES	
ITEM	BENT 4 STAGE II
CY CLASS "AA" CONCRETE	108.4
LB BAR REINF STEEL	16,801

INFRASTRUCTURE
 CONSULTING & ENGINEERING
 4940 PEACHTREE INDUSTRIAL BLVD., SUITE 310
 NORCROSS, GEORGIA 30071

DRAWING NO. 35-0027
 BRIDGE SHEET 27 OF 34

BRIDGE NO. 1

GEORGIA
DEPARTMENT OF TRANSPORTATION
 ENGINEERING DIVISION-OFFICE OF BRIDGES AND STRUCTURES

INTERMEDIATE BENT 4 - STAGE II
 SR 18 OVER LONG CANE CREEK
 TROUP COUNTY 0013999

SCALE: 1/4" = 1'-0" UNLESS NOTED OTHERWISE NOVEMBER 2020

DESIGNED D/VW	CHECKED SAW	REVIEWED DLC/SKG
DRAWN IDK	DESIGN GROUP DPD	APPROVED WMD