

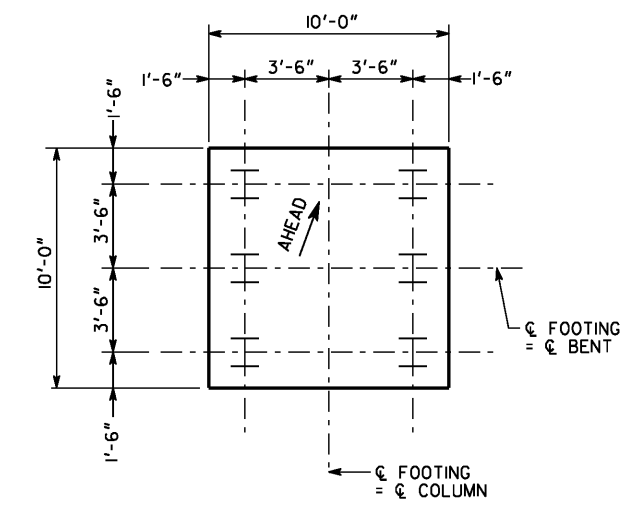
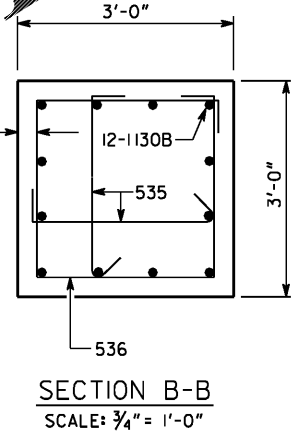
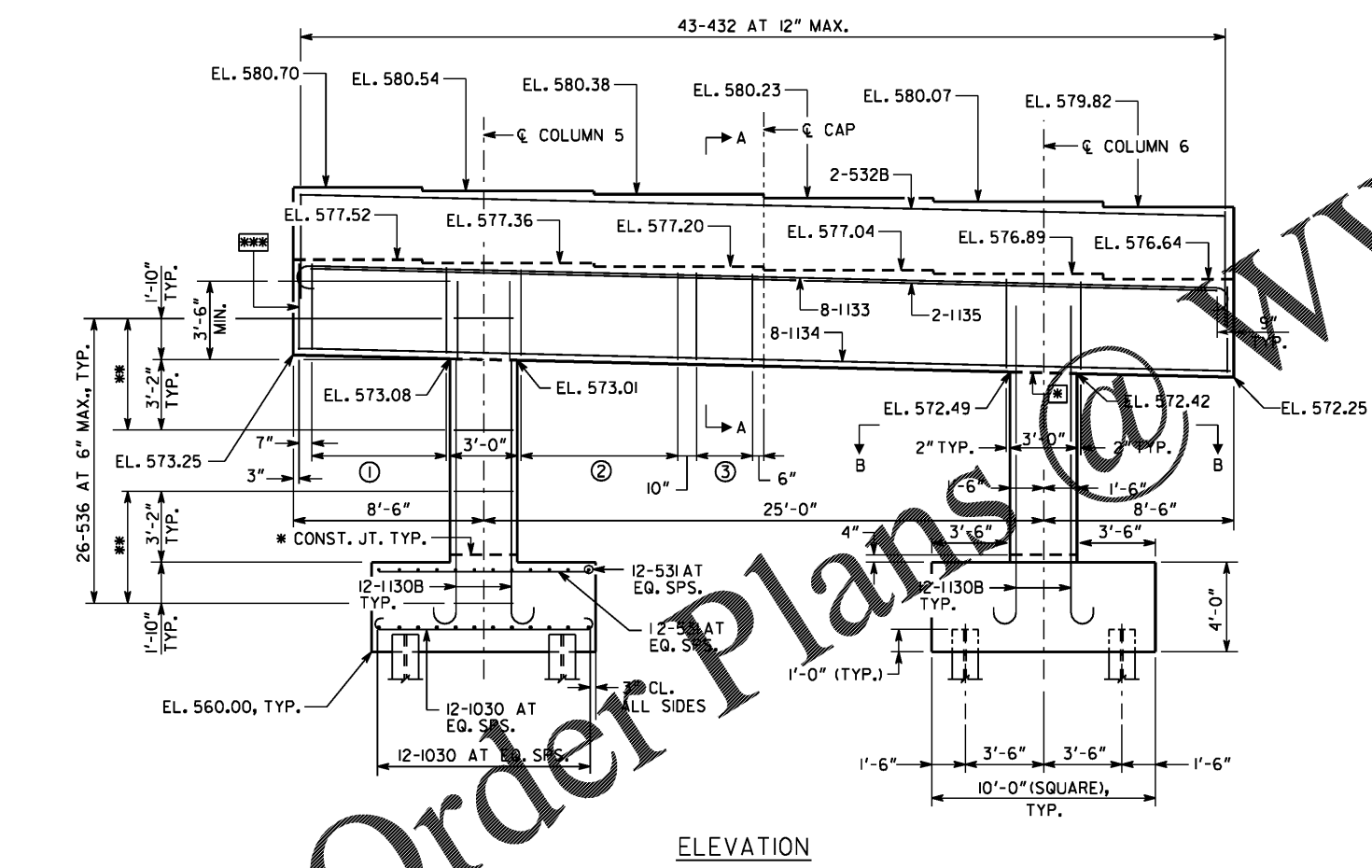
**BUNDLING DETAIL**

WIRE TIES

BAR TO BE BUNDLED SHALL BE BUNDLED VERTICALLY

OPTIONAL CONSTRUCTION JOINT. POUR WITHIN 12 HOURS.

FORM 3" DIAMETER X 12" DEEP HOLE FOR DOWEL BAR.



**NOTES:**

- CAP REINFORCEMENT SYMMETRIC ABOUT C. CAP.
- COLUMN REINFORCEMENT IS IDENTICAL FOR ALL COLUMNS.
- 11 LOCATIONS OF 535 CROSSTIES AT EACH 536, EACH DIRECTION, ALTERNATE HOOK ENDS AT ADJACENT VERTICAL LOCATIONS.
- 431B AND 533B BARS ARE NOT SHOWN IN ELEVATION
- AT CONTRACTOR'S OPTION CONST. JOINT MAY BE RELOCATED TO TOP OF FOOTING.
- FOOTING REINFORCEMENT IS IDENTICAL FOR ALL FOOTINGS.

ALL PILES SHALL BE STEEL H, HP 14 X 102.

PILES ARE DESIGNED FOR A MAXIMUM FACTORED AXIAL LOAD OF 320 KIPS.

**PLAN DRIVING OBJECTIVE**

ALL PILES SHALL BE DRIVEN TO A DRIVING RESISTANCE OF 532 KIPS AFTER A MINIMUM TIP ELEVATION OF 520 IS ACHIEVED.

- ① 13 LOCATIONS OF 2-530B AT 6" SPACING
- ② 13 LOCATIONS OF 2-530B AT 7" SPACING
- ③ 4 LOCATIONS OF 2-530B AT 10" SPACING
- 1 LOCATION OF 2-530B
- REQ'D CONST. JT. TYP.

SUBSTRUCTURE QUANTITIES	
ITEM	BENT 3 STAGE III
CY CLASS "AA" CONCRETE	77.2
LB BAR REINF STEEL	12,401

BRIDGE NO. 1

GEORGIA  
**DEPARTMENT OF TRANSPORTATION**  
ENGINEERING DIVISION-OFFICE OF BRIDGES AND STRUCTURES

INTERMEDIATE BENT 3 - STAGE III  
SR 18 OVER LONG CANE CREEK  
TROUP COUNTY 0013999

SCALE: 1/4" = 1'-0" UNLESS NOTED OTHERWISE NOVEMBER 2020

DESIGNED	DVW	CHECKED	SAW	REVIEWED	DLC/SKG
DRAWN	IDK	DESIGN GROUP	DPD	APPROVED	WMD

**INFRASTRUCTURE CONSULTING & ENGINEERING**  
4940 PEACHTREE INDUSTRIAL BLVD., SUITE 310  
NORCROSS, GEORGIA 30071

DRAWING NO. 35-0026  
BRIDGE SHEET 26 OF 34