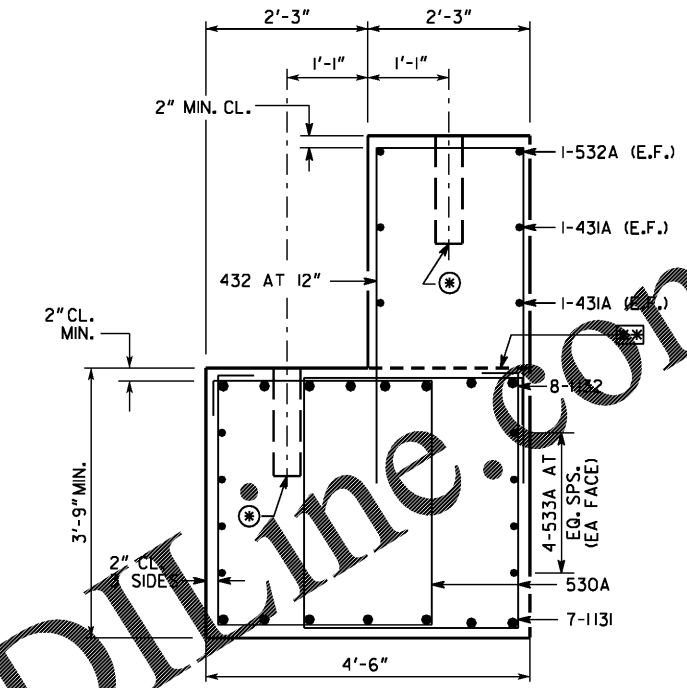
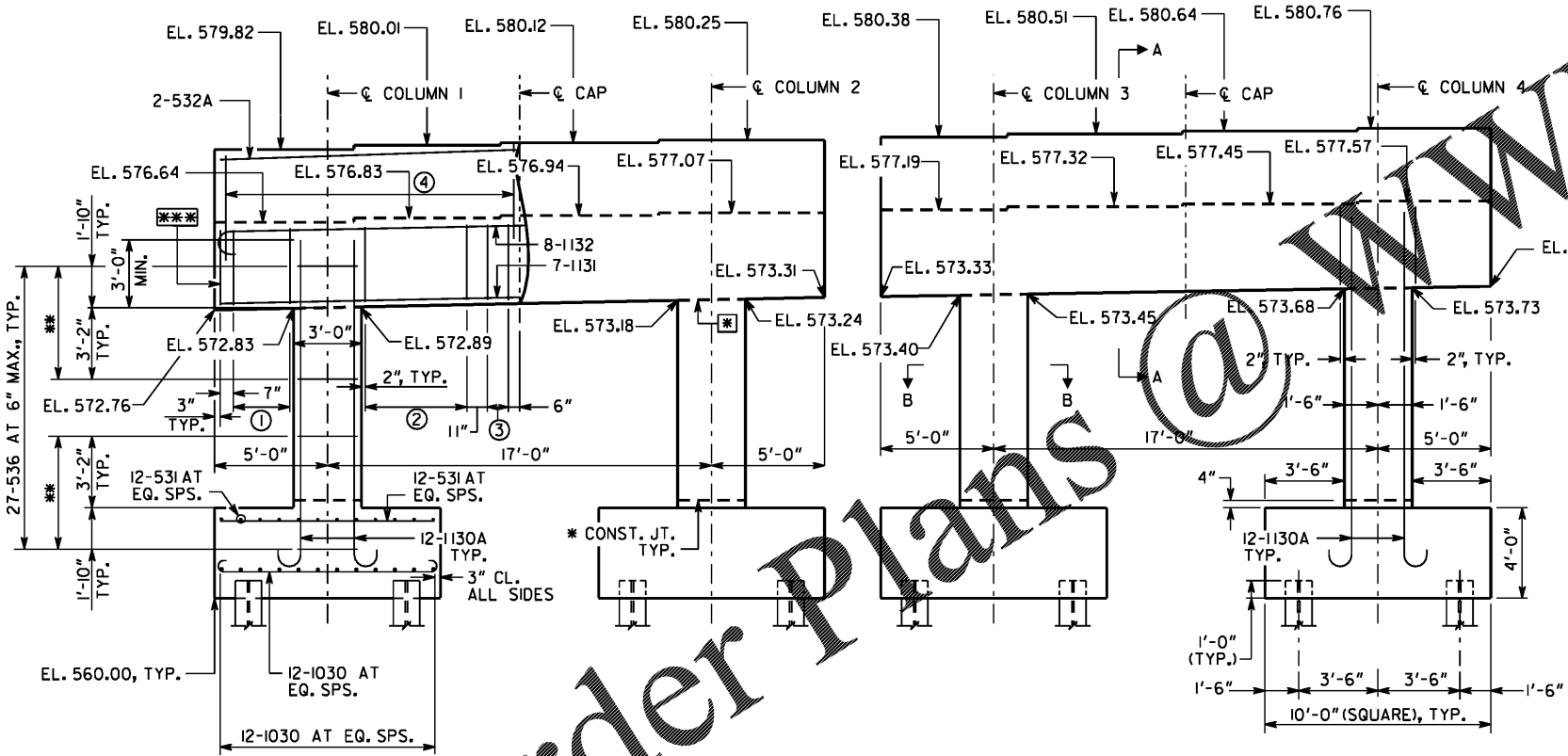


PLAN



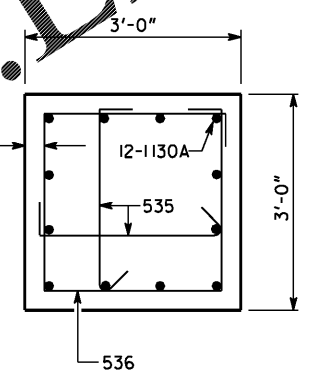
SECTION A-A
SCALE: 3/4" = 1'-0"



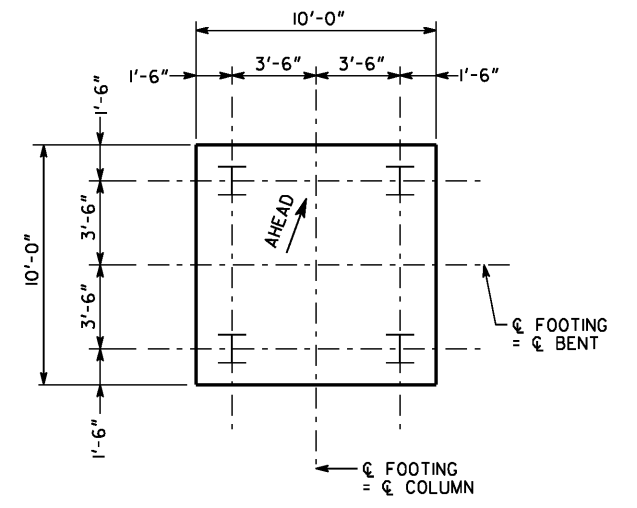
STAGE II BENT 3 EXTERIOR

STAGE II BENT 3 INTERIOR

ELEVATION



SECTION B-B
SCALE: 3/4" = 1'-0"



PILE LAYOUT

NOTES:

1. CAP REINFORCEMENT SYMMETRIC ABOUT C. CAP REINFORCEMENT IS IDENTICAL.
2. COLUMN REINFORCEMENT IS IDENTICAL FOR ALL COLUMNS.
3. 11 LOCATIONS OF 535 CROSSTIES AT EACH 536, EACH DIRECTION. ALTERNATE HOOK ENDS AT ADJACENT VERTICAL LOCATIONS.
4. 431A AND 533A BARS ARE NOT SHOWN IN ELEVATION.
5. AT CONTRACTOR'S OPTION CONST. JOINT MAY BE RELOCATED TO TOP OF FOOTING.
6. FOOTING REINFORCEMENT IS IDENTICAL FOR ALL FOOTINGS.

ALL PILES SHALL BE STEEL H, HP 14 X 102.
 PILES ARE DESIGNED FOR A MAXIMUM FACTORED AXIAL LOAD OF 320 KIPS.
PLAN DRIVING OBJECTIVE
 ALL PILES SHALL BE DRIVEN TO A DRIVING RESISTANCE OF 532 KIPS AFTER A MINIMUM TIP ELEVATION OF 520 IS ACHIEVED.

- ① 6 LOCATIONS OF 2-530A AT EACH LOCATION AT 6" SPACING
- ② 10 LOCATIONS OF 2-530A AT EACH LOCATION AT 6" SPACING
- ③ 2 LOCATIONS OF 2-530A AT EACH LOCATION AT 11" SPACING
- ④ 14 LOCATIONS OF 432 AT EACH LOCATION AT 12" SPACING MAX.
- *** 1 LOCATION OF 2-530A
- * REQ'D CONST. JT. TYP.

SUBSTRUCTURE QUANTITIES	
ITEM	BENT 3 STAGE II
CY CLASS "AA" CONCRETE	120.5
LB BAR REINF STEEL	17,005

INFRASTRUCTURE
 CONSULTING & ENGINEERING
 4940 PEACHTREE INDUSTRIAL BLVD., SUITE 310
 NORCROSS, GEORGIA 30071

DRAWING NO. 35-0025
 BRIDGE SHEET 25 OF 34

BRIDGE NO. 1

GEORGIA
DEPARTMENT OF TRANSPORTATION
 ENGINEERING DIVISION-OFFICE OF BRIDGES AND STRUCTURES

INTERMEDIATE BENT 3 - STAGE II
 SR 18 OVER LONG CANE CREEK
 TROUP COUNTY 0013999

SCALE: 1/4" = 1'-0" UNLESS NOTED OTHERWISE NOVEMBER 2020

DESIGNED DVW	CHECKED SAW	REVIEWED DLC/SKG
DRAWN IDK	DESIGN GROUP DPD	APPROVED WMD