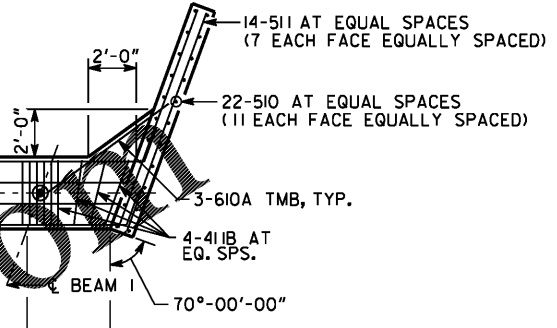
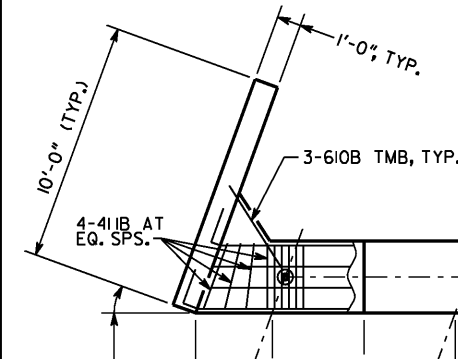
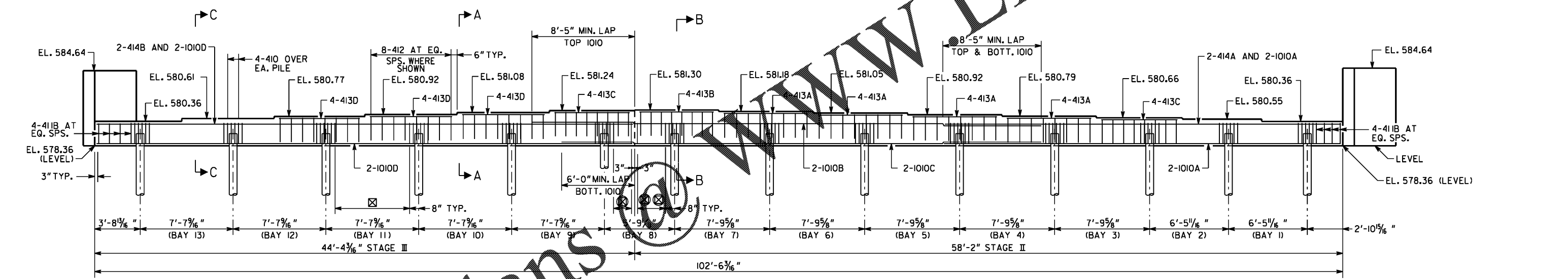


**- CAP STEP = CONST. JOINT

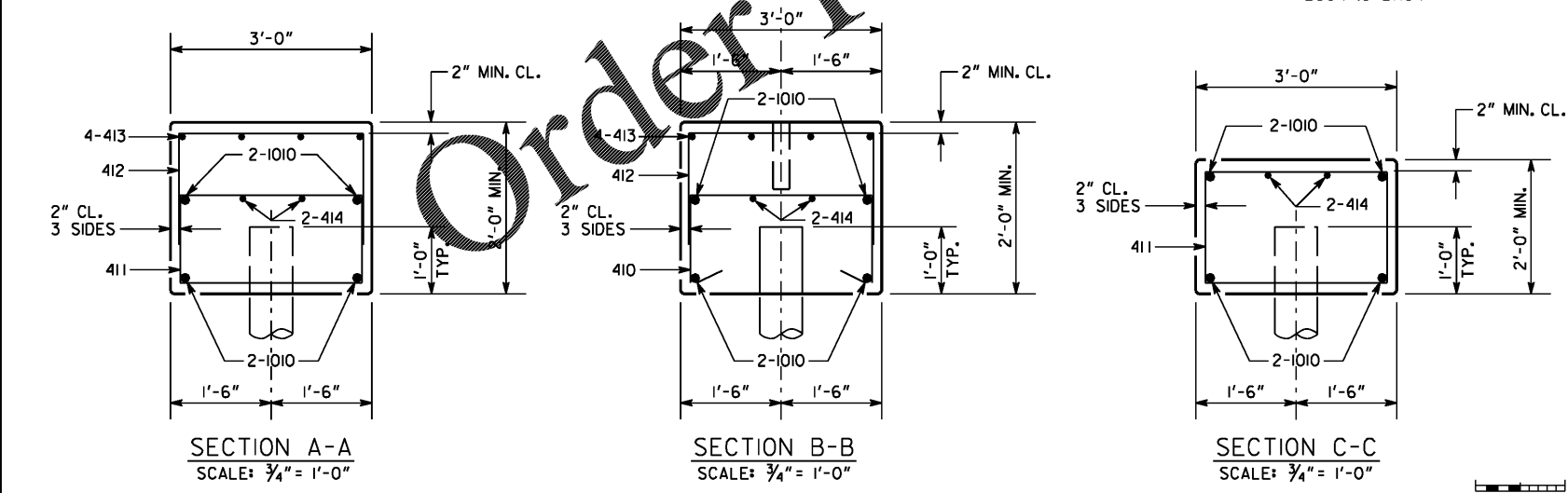
CONST. ϕ SR 18 = P.G.L.



PLAN



- ⊗ 8-41A AT EQ. SPS. (TYP. EA. BAY) (UNLESS OTHERWISE NOTED)
- ⊗ 3-41A AT EQ. SPS.
- ⊗ 4-41A AT EQ. SPS.



- NOTES:
1. POUR WINGWALLS MONOLITHICALLY WITH CAP.
 2. SEE GA STD. 9037 FOR DRAINAGE DETAILS AT END BENTS.
 3. BOTTOM OF WINGWALL IS LEVEL.
 4. PLACE 3'-0" WIDE STRIP OF WATERPROOFING FULL DEPTH OF CAP AND ENDWALL, CENTERED OVER JOINTS. SEE SECTION 530 OF GEORGIA DOT SPECIFICATIONS FOR ADDITIONAL INFORMATION. INCLUDE COST IN OVERALL BILL SUBMITTED.
 5. TMB = TOP, MIDDLE AND BOTTOM
 6. ALL PILES SHALL HAVE A MINIMUM OUTSIDE DIAMETER OF 7 $\frac{1}{2}$ " AND A MINIMUM WALL THICKNESS OF 1 $\frac{1}{2}$ ". SEE SPECIAL PROVISION 999 FOR ADDITIONAL REQUIREMENTS.
 7. MICROPILES SHALL HAVE A MINIMUM TIP ELEVATION OF 516 AND A MINIMUM 10'-0" SOCKET/BOND LENGTH INTO SOUND ROCK.
 8. MICROPILES ARE DESIGNED FOR A FACTORED SIDE RESISTANCE OF 18.0 KSF TO RESIST A MAXIMUM FACTORED AXIAL LOAD OF 181 KIPS.

SUBSTRUCTURE QUANTITIES

ITEM	STAGE II	STAGE III	BENT I TOTAL
CY CLASS "AA" CONCRETE	18.7	14.7	33.3
LB BAR REINF STEEL	2,533	1,738	4,271

BRIDGE NO. 1

GEORGIA
DEPARTMENT OF TRANSPORTATION
ENGINEERING DIVISION-OFFICE OF BRIDGES AND STRUCTURES

END BENT I
SR 18 OVER LONG CANE CREEK
TROUP COUNTY

NOVEMBER 2020

DESIGNED	DVW	CHECKED	SAW	REVIEWED	DLC/SKG
DRAWN	JNA	DESIGN GROUP	DPD	APPROVED	WMD

SCALE: $\frac{1}{4}'' = 1'-0''$ UNLESS OTHERWISE NOTED

DRAWING NO. 35-0022
BRIDGE SHEET 22 OF 34

INFRAStructure CONSULTING & ENGINEERING
4940 PEACHTREE INDUSTRIAL BLVD., SUITE 310
NORCROSS, GEORGIA 30071

1 INCH WHEN PRINTED FULL SIZE