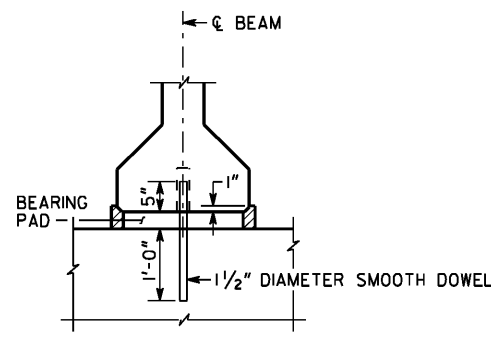
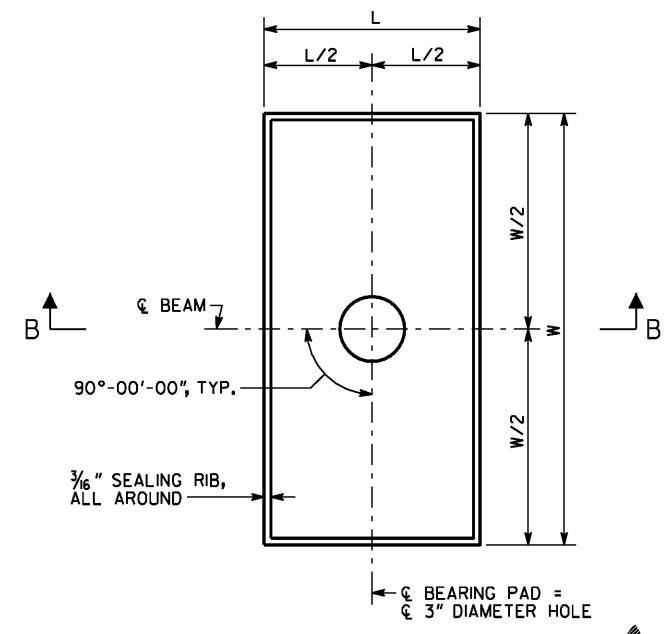


PLAN
BENT 1 SHOWN
BENT 5 SIMILAR

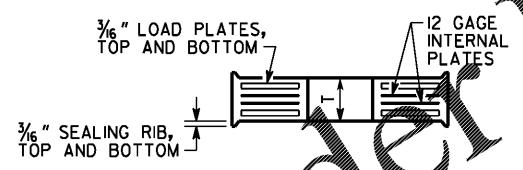


PREFORMED FOAM JOINT FILLER SHALL BE FURNISHED IN ACCORDANCE WITH SUB-SECTION 833.2.10 OF THE GEORGIA DOT SPECIFICATIONS.

ENDWALL NOT SHOWN
SECTION A-A



PLAN



SECTION B-B
BEARING PAD

NOTES

- BEARING PADS HAVE BEEN DESIGNED ACCORDING TO AASHTO LRFD BRIDGE DESIGN SPECIFICATIONS, SECTION 17.6 METHOD A AND SHALL BE FURNISHED IN ACCORDANCE WITH AASHTO LRFD BRIDGE CONSTRUCTION SPECIFICATIONS, SECTION 18, BEARING DEVICES.
- 1/2" DIAMETER SMOOTH DOWELS SHALL BE ASTM A 709 GRADE 50.
- BEARING PADS SHALL BE MADE OF 60 DUROMETER HARDNESS NEOPRENE, GRADE 2 OR HIGHER.
- 1/2" DIAMETER HOLE IN BEARING PADS MAY BE FORMED OR DRILLED.
- BEARING PADS SHALL HAVE 1/4" COVER ON THE TOP, BOTTOM, AND SIDES AND AROUND THE HOLE.
- 3/8" LOAD PLATES AND 12 GAGE INTERNAL PLATE(S) (IF REQUIRED) SHALL BE ASTM A 709 GRADE 36 OR ASTM A 1011 GRADE 36.
- NUMBER OF INTERNAL PLATES SHOWN FOR ILLUSTRATION PURPOSES ONLY. THE NUMBER OF INTERNAL PLATE(S) SPECIFIED SHALL BE EQUALLY SPACED BETWEEN LOAD PLATES.
- USE OF 1/2° MOLD DRAFT IS OPTIONAL.

BENT	BEARING PADS							
	W	L	T	NUMBER OF INTERNAL PLATE(S)	DESIGN SHEAR DEFLECTION	DESIGN LOADS (KIPS)		
						DEAD LOAD	LIVE LOAD (NO IMPACT)	DEAD LOAD + LIVE LOAD
1	16"	9"	3"	3	1 1/8"	46	59	105
2 BACK	16"	9"	3"	3	1"	36	59	95
2 AHEAD	16"	9"	3"	3	1"	36	59	95
3 BACK	16"	9"	3"	3	3/4"	36	59	95
3 AHEAD	22"	12"	3"	3	3/4"	136	86	222
4 BACK	22"	12"	3"	3	0	136	86	222
4 AHEAD	22"	12"	3"	3	0	97	76	173
5	22"	12"	3"	3	5/8"	108	76	184

Order Plans @ www.lidline.com

BRIDGE NO. 1

GEORGIA
DEPARTMENT OF TRANSPORTATION
ENGINEERING DIVISION-OFFICE OF BRIDGES AND STRUCTURES

BEARING PAD DETAILS
SR 18 OVER LONG CANE CREEK
TROUP COUNTY 0013999

NO SCALE NOVEMBER 2020

DESIGNED DVW	CHECKED SAW	REVIEWED DLC/SKG
DRAWN JNA	DESIGN GROUP DPD	APPROVED WMD

INFRASTRUCTURE
CONSULTING & ENGINEERING
4940 PEACHTREE INDUSTRIAL BLVD., SUITE 310
NORCROSS, GEORGIA 30071

DRAWING NO. 35-0021
BRIDGE SHEET 21 OF 34