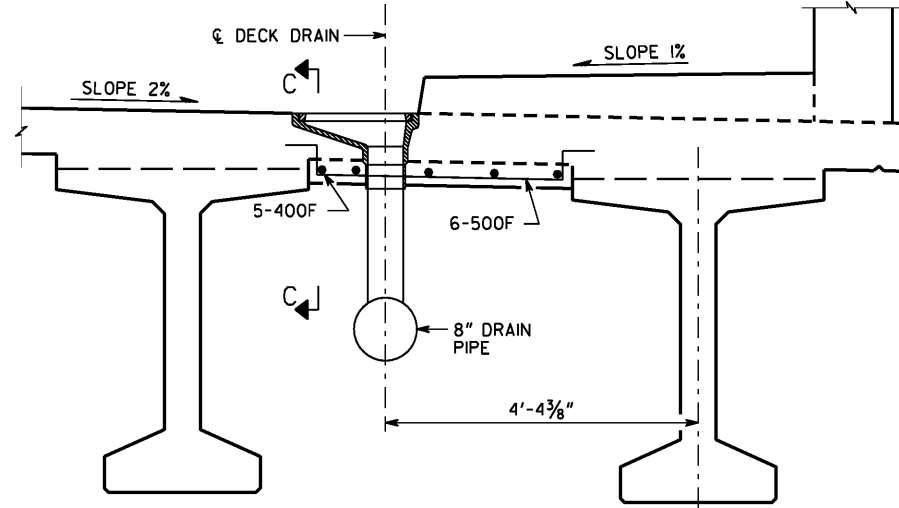
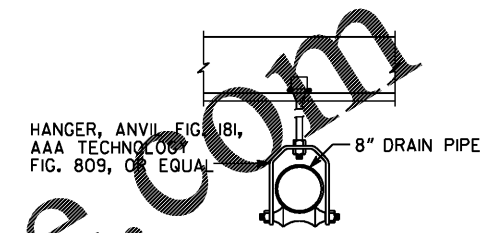


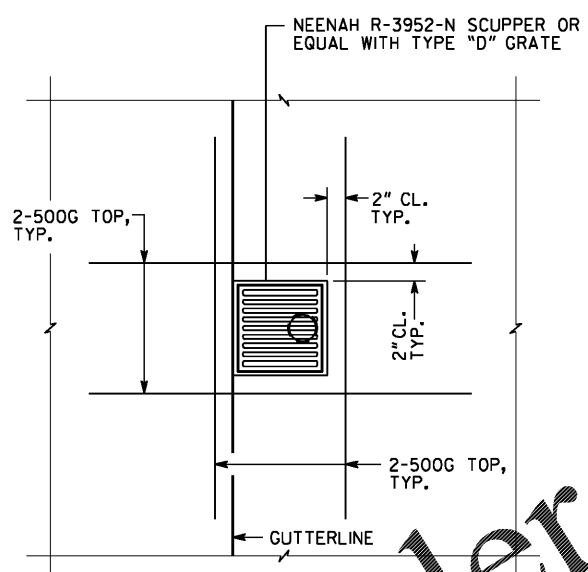
LEFT GUTTER DRAINAGE DETAIL  
(SPANS 3 AND 4)



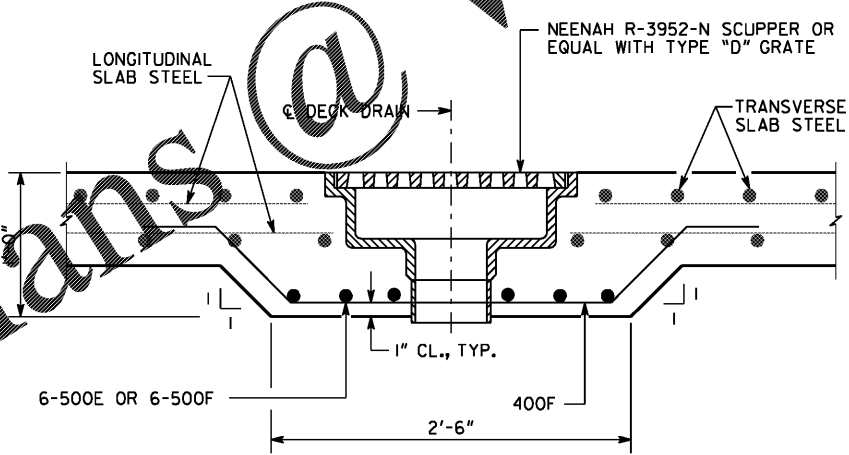
RIGHT GUTTER DRAINAGE DETAIL  
(SPANS 3 AND 4)



8" DRAIN PIPE SUPPORT DETAIL  
NO SCALE  
USE ANVIL UNIVERSAL CONCRETE INSERT FIG. 282, AAA TECHNOLOGY FIGURE 912, OR EQUAL. FURNISH AND INSTALL INSERTS. SPACE HANGERS AT MAXIMUM OF 8'-0" O.C.



EXTRA SLAB REINFORCEMENT  
FOR DECK DRAINS



SECTION C-C  
SCALE: 1/2" = 1'-0"

NOTES:

1. PROVIDE DECK DRAINS SYSTEM IN ACCORDANCE WITH SECTION 544 OF THE GEORGIA DOT SPECIFICATIONS.
2. ALL PIPE / PIPE FITTINGS SHALL BE PVC SCHEDULE 40 MEETING REQUIREMENTS OF ASTM D1785 AND D2466. CONNECT FITTINGS USING SOLVENT CEMENT.
3. FURNISH SHOP DRAWINGS OF THE COMPLETE DRAIN SYSTEM FOR APPROVAL BY THE ENGINEER.
4. CUT OR SLIGHTLY ADJUST TYPICAL BARS ONLY AS NECESSARY TO PLACE DRAIN.
5. INCLUDE COST OF ALL MATERIALS AND WORK TO INSTALL DECK DRAIN SYSTEM IN THE PRICE BID FOR "DECK DRAIN SYSTEM".
6. FORM 10" DIAMETER OPENING THROUGH ENDWALL, DIAPHRAGM AND EDGE BEAM FOR 8" DIAMETER DECK DRAINS.
7. SEAL ALL VOIDS IN OPENINGS IN ENDWALLS.
8. ALL COMPONENTS OF CONNECTION PLATES, BOLTS, NUTS, WASHERS AND CHANNELS SHALL BE GALVANIZED IN ACCORDANCE WITH ASTM A123 AND ASTM 153.
9. PROVIDE EXPANSION JOINT DEVICES WITHIN THE FIRST 100 FT. OF THE BEGINNING AND ENDING OF DRAINAGE SYSTEM. PROVIDE ADDITIONAL EXPANSION JOINT DEVICES SPACED AT A MAXIMUM OF 200 FT. APART FOR THE FULL LENGTH OF EACH HORIZONTAL PIPE.
10. EXPANSION JOINT DEVICES SHALL HAVE A MINIMUM EXPANSION CAPACITY OF 12 INCHES.

BRIDGE NO. 1

DATE		REVISIONS		BY	
BRIDGE NO. 1 GEORGIA <b>DEPARTMENT OF TRANSPORTATION</b> ENGINEERING DIVISION-OFFICE OF BRIDGES AND STRUCTURES  BRIDGE DRAINAGE DETAILS (SHEET 2 OF 2) SR 18 OVER LONG CANE CREEK TROUP COUNTY 0013999					
SCALE: 3/4" = 1'-0" UNLESS OTHERWISE NOTED NOVEMBER 2020					
DESIGNED	SAW	CHECKED	DVW	REVIEWED	DLC/SKG
DRAWN	JNA	DESIGN GROUP	DPD	APPROVED	WMD

**INFRASTRUCTURE CONSULTING & ENGINEERING**  
 4940 PEACHTREE INDUSTRIAL BLVD., SUITE 310  
 NORCROSS, GEORGIA 30071

DRAWING NO. 35-0016  
 BRIDGE SHEET 16 OF 34