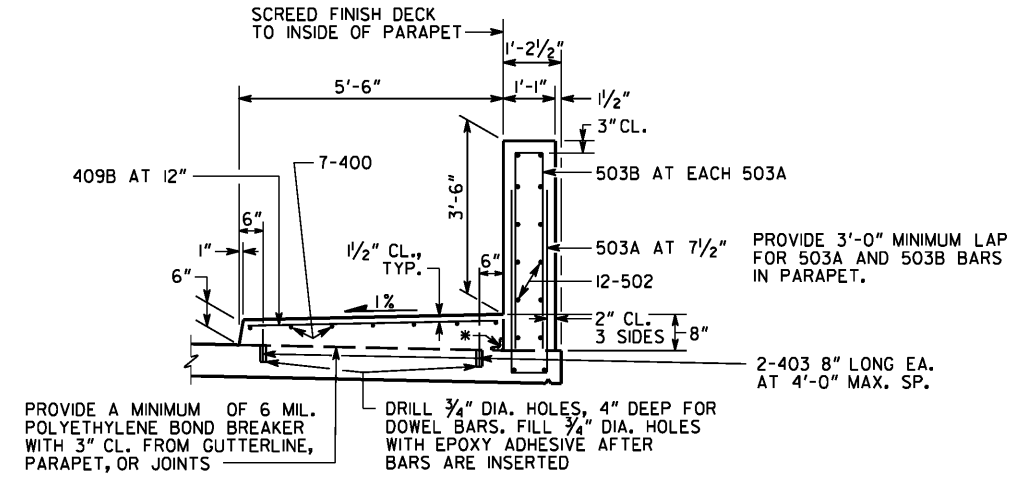


PLACE TRANSVERSE SIDEWALK MARKINGS ON SIDEWALK SPACED AT 5'-0"±.

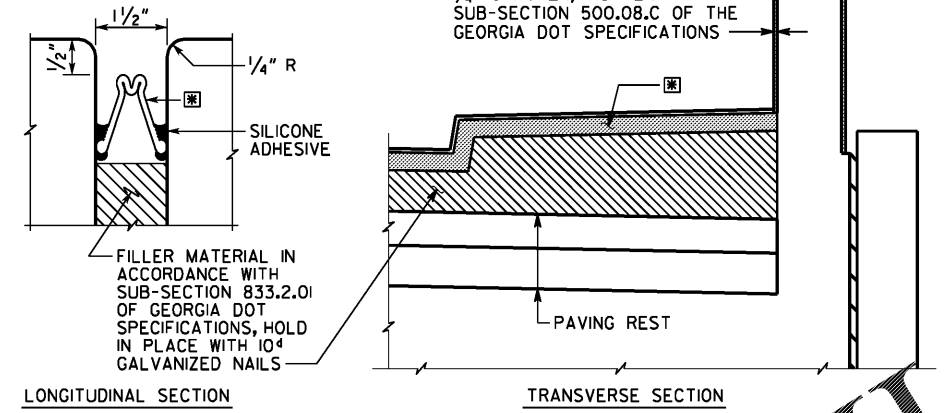
INCLUDE COST OF BOND BREAKER AND EPOXY ADHESIVE IN PRICE BID FOR SUPERSTRUCTURE ITEMS.



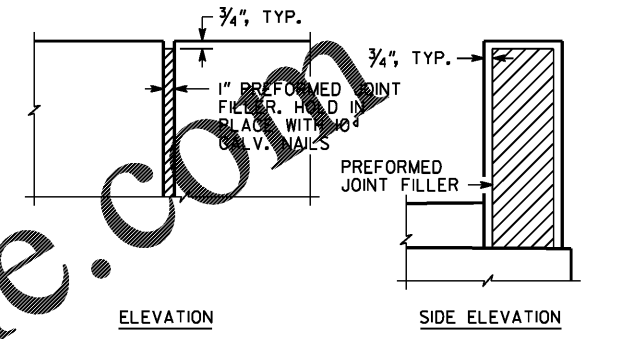
* 3" X 3" WATERPROOFING, SEE SECTION 530 OF THE GEORGIA DOT SPECIFICATIONS.

SIDEWALK AND PARAPET DETAILS
RT. SIDEWALK SHOWN

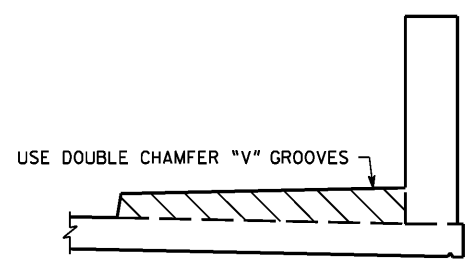
PREFORMED SILICONE JOINT SEAL AS PER SPECIAL PROVISION SECTION 449



EXPANSION JOINT DETAILS
BENT 1

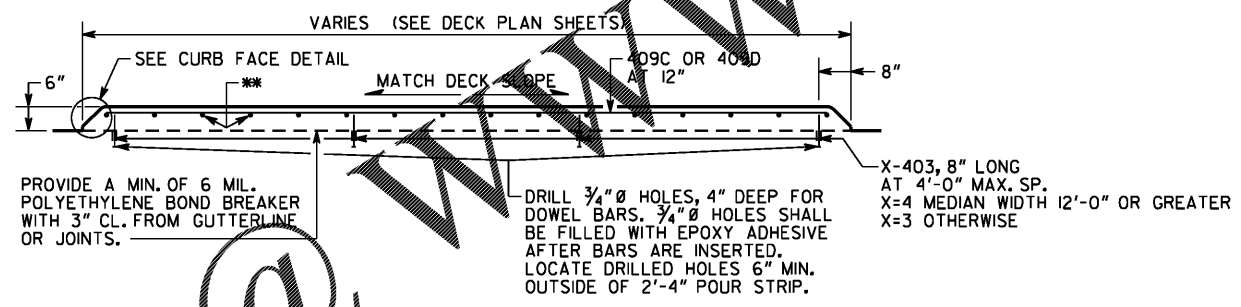


DETAIL OF 1" EXPANSION JOINT IN PARAPET

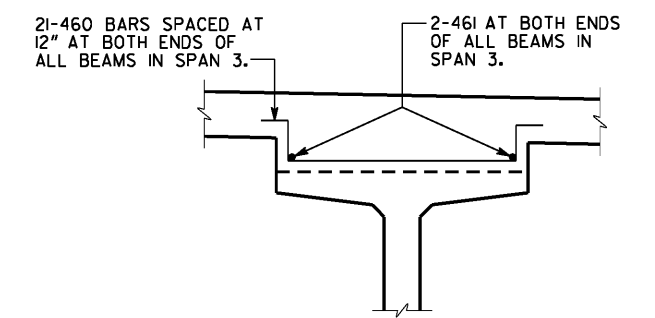


CONST. JOINT DETAIL AT SIDEWALK AND PARAPET

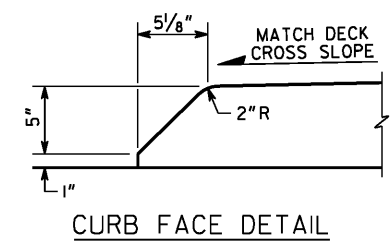
**16-400 (SPANS 2, 3 AND 4)
16-400 MAX. (SPAN 1), CLIP 400 BARS ALONG MEDIAN TAPER AS NEEDED TO MAINTAIN 1'-0"± SPACES



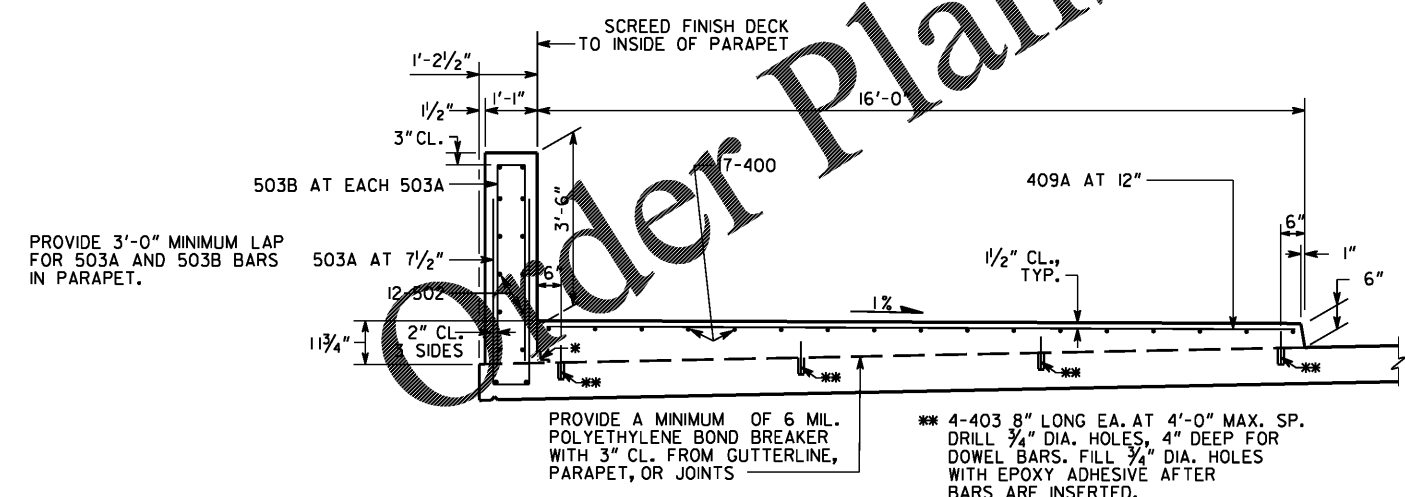
CONCRETE MEDIAN DETAILS
PLACE TRANSVERSE MARKINGS SPACED AT 5'-0"±.
COST OF BOND BREAKER AND EPOXY ADHESIVE TO BE INCLUDED IN PRICE BID FOR SUPERSTRUCTURE ITEMS.



REBAR DETAIL IN COPING



CURB FACE DETAIL



* 3" X 3" WATERPROOFING, SEE SECTION 530 OF THE GEORGIA DOT SPECIFICATIONS.

SIDEWALK AND PARAPET DETAILS
LT. SIDEWALK SHOWN

PLACE TRANSVERSE SIDEWALK MARKINGS ON SIDEWALK SPACED AT 5'-0"±.

INCLUDE COST OF BOND BREAKER AND EPOXY ADHESIVE IN PRICE BID FOR SUPERSTRUCTURE ITEMS.

BRIDGE NO. 1

GEORGIA
DEPARTMENT OF TRANSPORTATION
ENGINEERING DIVISION-OFFICE OF BRIDGES AND STRUCTURES

MISCELLANEOUS DETAILS
(SHEET 1 OF 2)
SR 18 OVER LONG CANE CREEK
TROUP COUNTY 0013999

NO SCALE NOVEMBER 2020

| DATE | REVISIONS | BY |
|------|-----------|----|
| | | |
| | | |

INFRASTRUCTURE CONSULTING & ENGINEERING
4940 PEACHTREE INDUSTRIAL BLVD., SUITE 310
NORCROSS, GEORGIA 30071

DRAWING NO. 35-0013
BRIDGE SHEET 13 OF 34

DESIGNED JNA CHECKED SAW REVISIONS WMD
DRAWN DLR DESIGN GROUP DPD APPROVED WMD