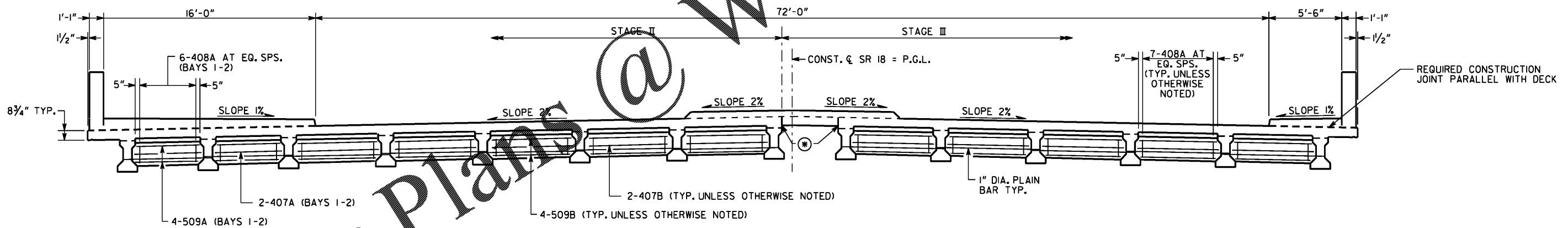
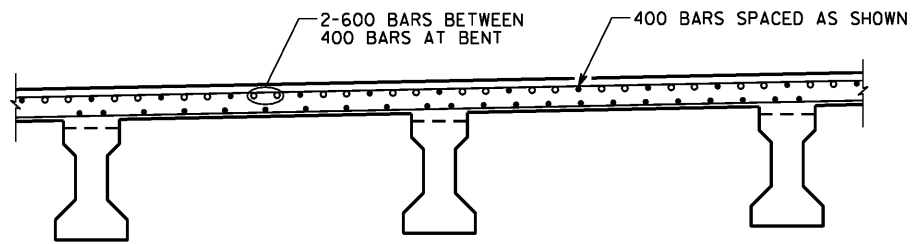


SECTION THRU SLAB



SECTION THRU DIAPHRAGM

⊛ CONSTRUCTION JOINT



SECTION THRU SLAB AT INTERMEDIATE BENT
SCALE: 1/2" = 1'-0"

NOTES

- LAP 400 BARS A MINIMUM OF 1'-9"
- LAP 500 AND 501 BARS A MINIMUM OF 2'-2"
- DIMENSION "D" IS MEASURED FROM TOP OF SLAB TO TOP OF BEAMS AT CENTERLINE BEARING. VARY "D" BETWEEN BEARINGS TO COMPENSATE FOR DEAD LOAD DEFLECTION. MAINTAIN A CONSTANT SLAB THICKNESS OF 7 3/4" BETWEEN BEAMS AND 8" IN THE OVERHANGS.

"D" = 9 1/2" FOR INTERIOR BEAMS
"D" = 10 1/2" FOR EXTERIOR BEAMS

Order Plans @ WWW.LDILine.com

BRIDGE NO. 1		GEORGIA	
DEPARTMENT OF TRANSPORTATION			
ENGINEERING DIVISION-OFFICE OF BRIDGES AND STRUCTURES			
DECK SECTIONS - SPANS 1 AND 2		SR 18 OVER LONG CANE CREEK	
TROUP COUNTY		0013999	
SCALE: 1/4" = 1'-0" UNLESS OTHERWISE NOTED NOVEMBER 2020			
DESIGNED	DVW	CHECKED	SAW
DRAWN	DLR	DESIGN GROUP	DPD
REVIEWED	DLC/SKG	APPROVED	WMD

INFRASTRUCTURE CONSULTING & ENGINEERING
4940 PEACHTREE INDUSTRIAL BLVD., SUITE 310
NORCROSS, GEORGIA 30071

DRAWING NO. 35-0007
BRIDGE SHEET 7 OF 34

DATE	REVISIONS

1 INCH WHEN PRINTED FULL SIZE