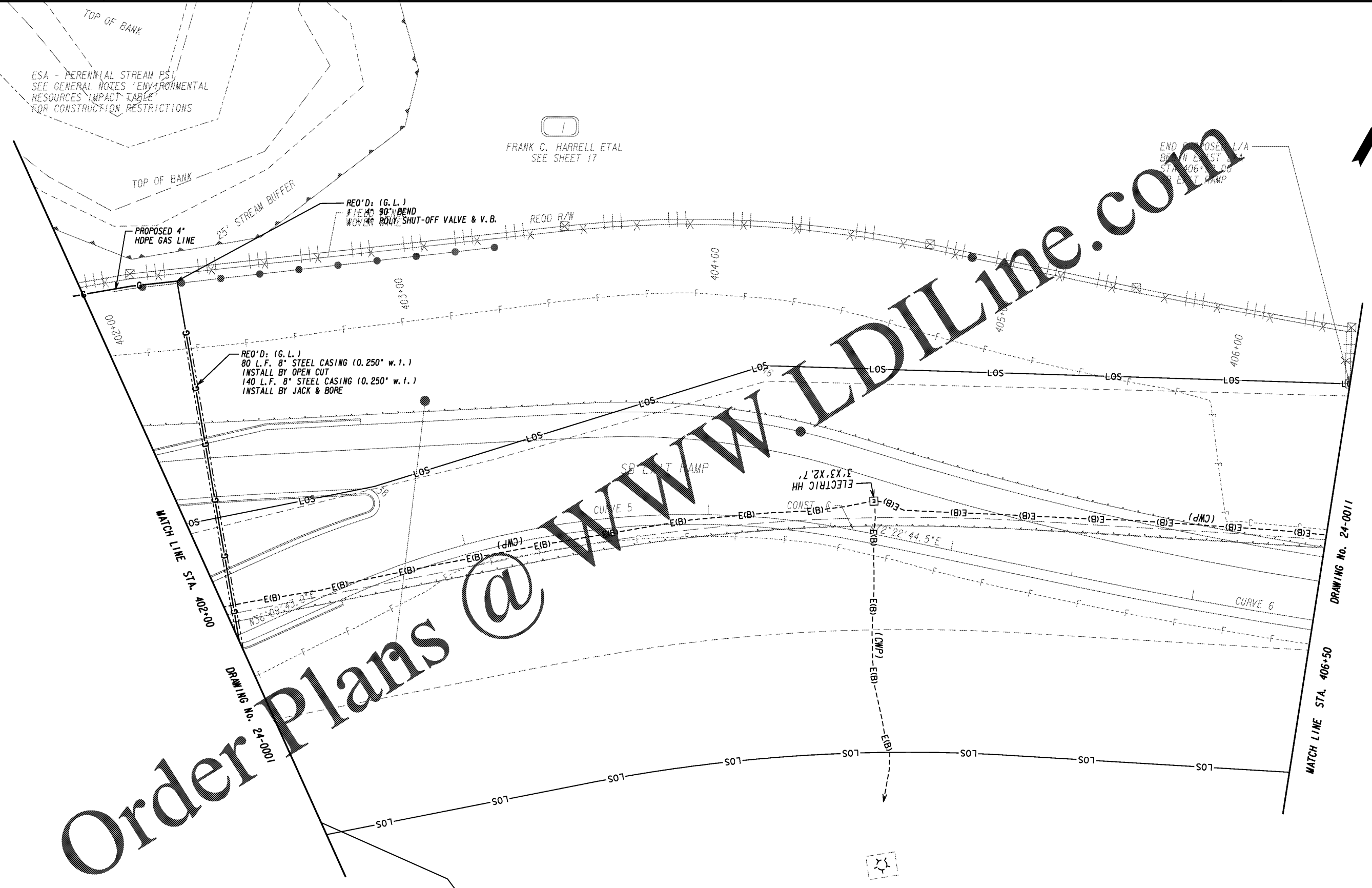


ESA - PERENNIAL STREAM PS1
SEE GENERAL NOTES 'ENVIRONMENTAL
RESOURCES IMPACT TABLE'
FOR CONSTRUCTION RESTRICTIONS

FRANK C. HARRELL ETAL
SEE SHEET 17

END PROPOSED L/A
BEGIN EAST SIDE
STA 406+00
EXIT RAMP

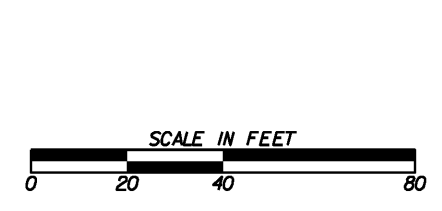


Order Plans @

PROPERTY AND EXISTING R/W LINE	---
REQUIRED R/W LINE	---
CONSTRUCTION LIMITS	---
EASEMENT FOR CONSTR	---
& MAINTENANCE OF SLOPES	---
EASEMENT FOR CONSTR OF SLOPES	---
EASEMENT FOR CONSTR OF DRIVES	---

BEGIN LIMIT OF ACCESS.....BLA	---
END LIMIT OF ACCESS.....ELA	---
LIMIT OF ACCESS	---
REQ'D R/W & LIMIT OF ACCESS	---
ORANGE BARRIER FENCE	---
ESA - ENV. SENSITIVE AREA (SEE ERIT TABLE)	---

Kimley»Horn
Engineering, Planning, and Environmental Consultants
Suite 350, 3930 East Jones Bridge Road
Peachtree Corners, Georgia 30092



REVISION DATES	

UTILITY PLANS
1-85 @ SR 18 & SR 18 @ SR 103

CHECKED:	DATE:	DRAWING No. 24-0010
BACKCHECKED:	DATE:	
CORRECTED:	DATE:	
VERIFIED:	DATE:	