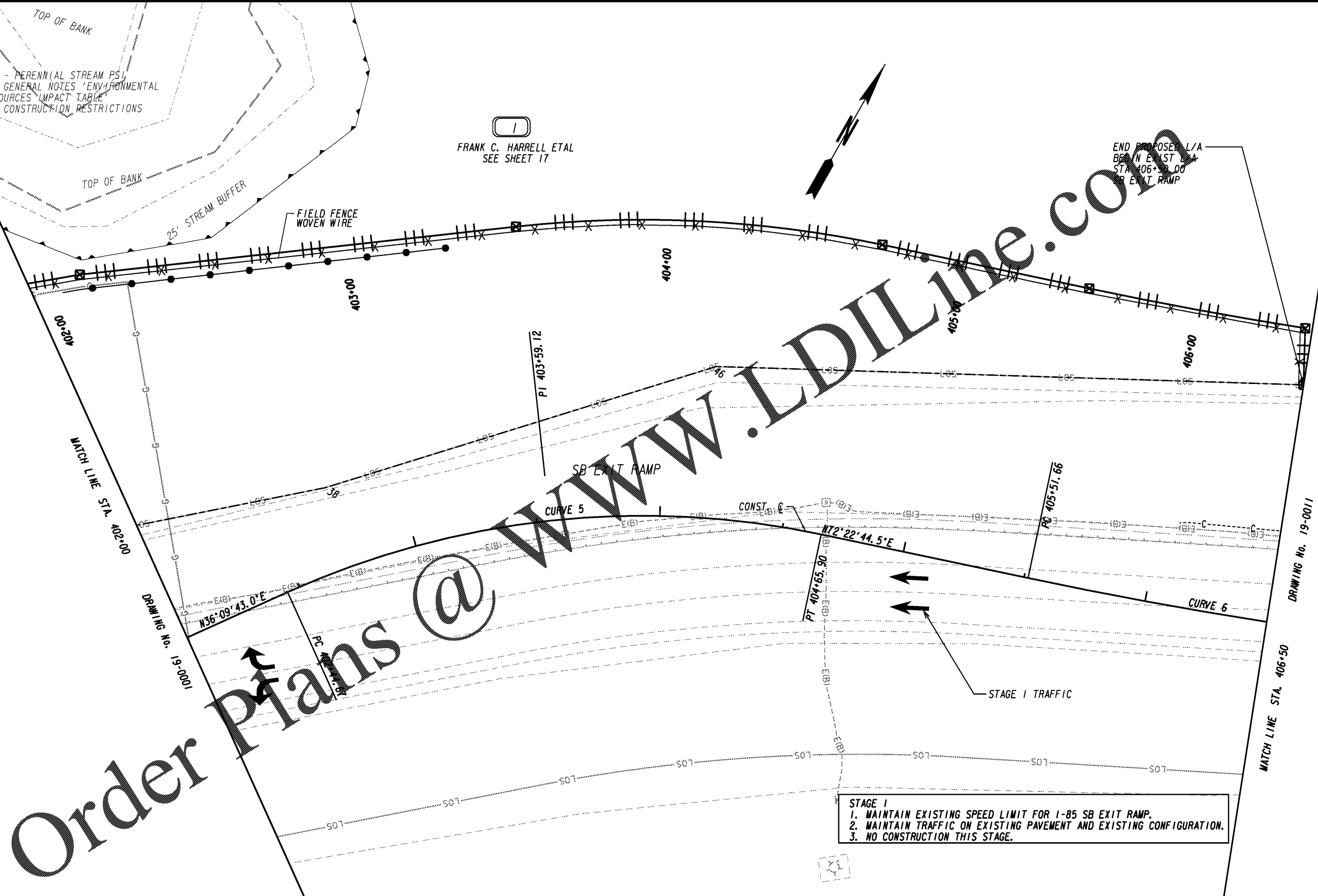


ESA - PERENNIAL STREAM PS
SEE GENERAL NOTES 'ENVIRONMENTAL
RESOURCES' IMPACT TABLE
FOR CONSTRUCTION RESTRICTIONS

FRANK C. HARRELL ETAL
SEE SHEET 17

END PROPOSED L/A
BEGIN EXIST L/A
STA 406+50.00
SB EXIT RAMP



Order Plans @ www.LDILine.com

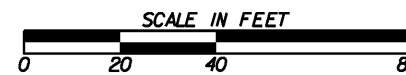
STAGE I
 1. MAINTAIN EXISTING SPEED LIMIT FOR I-85 SB EXIT RAMP.
 2. MAINTAIN TRAFFIC ON EXISTING PAVEMENT AND EXISTING CONFIGURATION.
 3. NO CONSTRUCTION THIS STAGE.

LEGEND

PAVEMENT REMOVAL	
TEMPORARY CONSTRUCTION PAVEMENT	
PERMANENT CONSTRUCTION	
CONCRETE MEDIAN CONSTRUCTION	
MILL & OVERLAY CONSTRUCTION	
OPEN LANES OF TRAFFIC	

Kimley»Horn

Engineering, Planning, and Environmental Consultants
Suite 350, 3930 East Jones Bridge Road
Peachtree Corners, Georgia 30092



REVISION DATES

NO.	DATE	DESCRIPTION

CONSTRUCTION STAGING PLAN
I-85 @ SR 18 & SR 18 @ SR 103
STAGE I

CHECKED:	DATE:	DRAWING No.
BACKCHECKED:	DATE:	19-0010
CORRECTED:	DATE:	
VERIFIED:	DATE:	