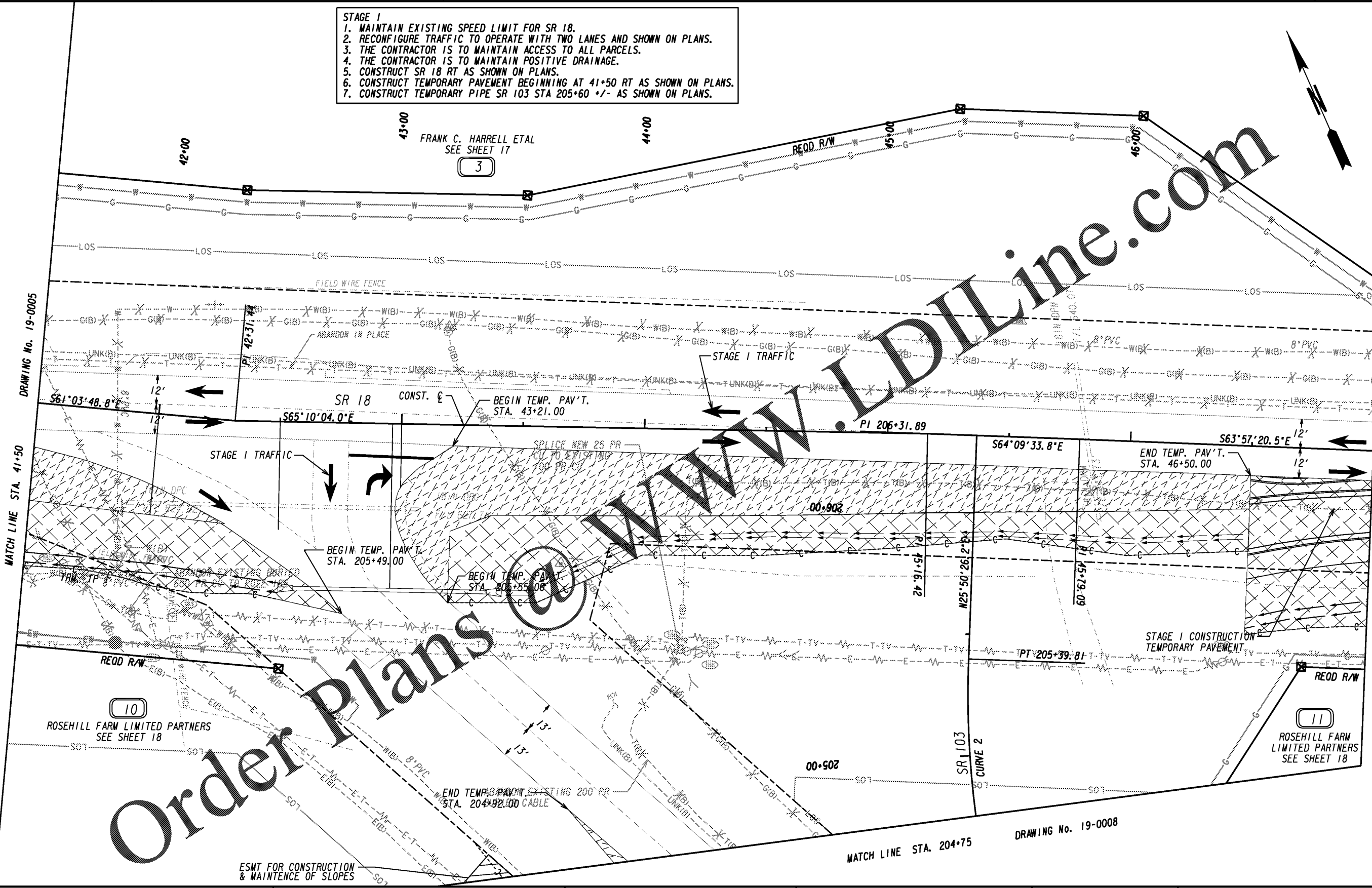


STAGE 1

1. MAINTAIN EXISTING SPEED LIMIT FOR SR 18.
2. RECONFIGURE TRAFFIC TO OPERATE WITH TWO LANES AND SHOWN ON PLANS.
3. THE CONTRACTOR IS TO MAINTAIN ACCESS TO ALL PARCELS.
4. THE CONTRACTOR IS TO MAINTAIN POSITIVE DRAINAGE.
5. CONSTRUCT SR 18 RT AS SHOWN ON PLANS.
6. CONSTRUCT TEMPORARY PAVEMENT BEGINNING AT 41+50 RT AS SHOWN ON PLANS.
7. CONSTRUCT TEMPORARY PIPE SR 103 STA 205+60 +/- AS SHOWN ON PLANS.

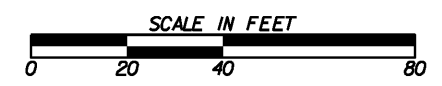


Order Plans @ www.LDILine.com

LEGEND

PAVEMENT REMOVAL	
TEMPORARY CONSTRUCTION PAVEMENT	
PERMANENT CONSTRUCTION	
CONCRETE MEDIAN CONSTRUCTION	
MILL & OVERLAY CONSTRUCTION	
OPEN LANES OF TRAFFIC	

Kimley»Horn
 Engineering, Planning, and Environmental Consultants
 Suite 350, 3930 East Jones Bridge Road
 Peachtree Corners, Georgia 30092



REVISION DATES	

CONSTRUCTION STAGING PLAN		
I-85 @ SR 18 & SR 18 @ SR 103		
STAGE I		
CHECKED:	DATE:	DRAWING No.
BACKCHECKED:	DATE:	19-0006
CORRECTED:	DATE:	
VERIFIED:	DATE:	