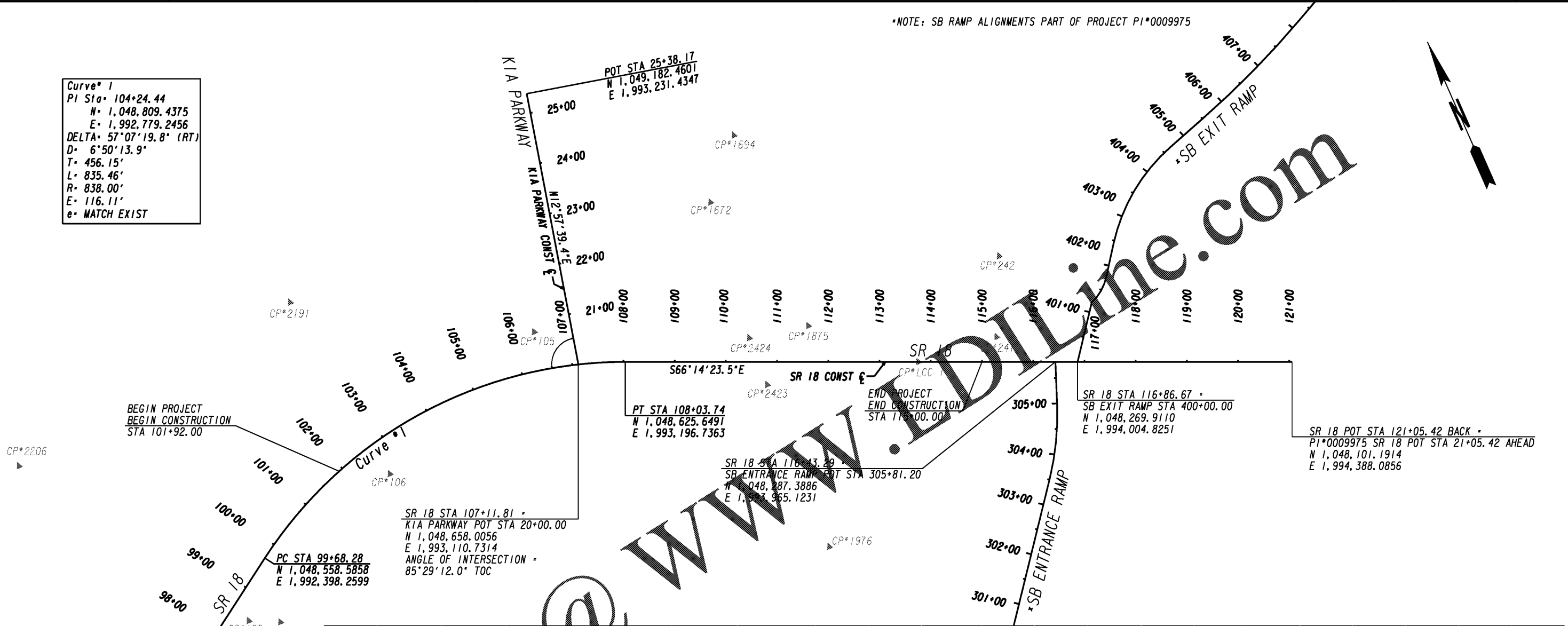


*NOTE: SB RAMP ALIGNMENTS PART OF PROJECT PI*0009975

Curve # 1
 PI Sta 104+24.44
 N= 1,048,809.4375
 E= 1,992,779.2456
 DELTA= 57°07'19.8" (RT)
 D= 6°50'13.9"
 T= 456.15'
 L= 835.46'
 R= 838.00'
 E= 116.11'
 e= MATCH EXIST



Order Pls @

CONTROL POINT DATA

NAME	STATION	OFFSET	NORTHING	EASTING	ELEVATION	DESCRIPTION
CP#LCC 1	113+75.69	0.07'LT	1,048,395.2770	1,993,720.2290	583.125'	3/4 x 30" IRON PIN SET 4" BELOW GROUND LEVEL. IT IS LOCATED IN THE MEDIAN OF SR 18 AT THE EAST END OF THE BRIDGE OVER LONG CANE CREEK.
CP#105	106+39.31	75.87'LT	1,048,750.8223	1,993,057.1700		3/8" IRON PIN
CP#106	102+68.69	68.23'RT	1,048,610.8113	1,992,687.9050		3/8" IRON PIN
CP#108	97+48.35	40.08'RT	1,048,459.1403	1,992,320.1110		60D NAIL
CP#241	115+28.05	48.78'LT	1,048,378.3020	1,993,879.6800	581.560'	60D NAIL
CP#242	115+23.28	206.58'LT	1,048,520.7790	1,993,947.6710	569.160'	60D NAIL
CP#549	98+79.85	93.18'RT	1,048,432.1293	1,992,375.6450		60D NAIL
CP#1672	109+69.95	311.64'LT	1,048,843.9063	1,993,474.4160		60D NAIL
CP#1694	110+15.62	442.40'LT	1,048,945.1843	1,993,568.9040		60D NAIL
CP#1875	111+60.78	70.44'LT	1,048,546.2703	1,993,551.8910		60D NAIL
CP#1976	112+02.09	360.97'RT	1,048,134.7773	1,993,415.8750		60D NAIL
CP#2191	102+99.97	319.09'LT	1,048,995.7073	1,992,644.5800		60D NAIL
CP#2206	98+58.83	500.92'LT	1,048,916.7743	1,992,031.3730		60D NAIL
CP#2423	110+80.67	44.74'RT	1,048,473.1253	1,993,432.1680		3/8" IRON PIN
CP#2424	110+45.48	46.70'LT	1,048,570.9933	1,993,436.8020		3/8" IRON PIN



REVISION DATES

CONSTRUCTION LAYOUT
SR 18 BRIDGE REPLACEMENT @ LONG CANE CREEK
TROUP COUNTY

CHECKED:	DATE:	DRAWING No.
BACKCHECKED:	DATE:	11-0001
CORRECTED:	DATE:	
VERIFIED:	DATE:	