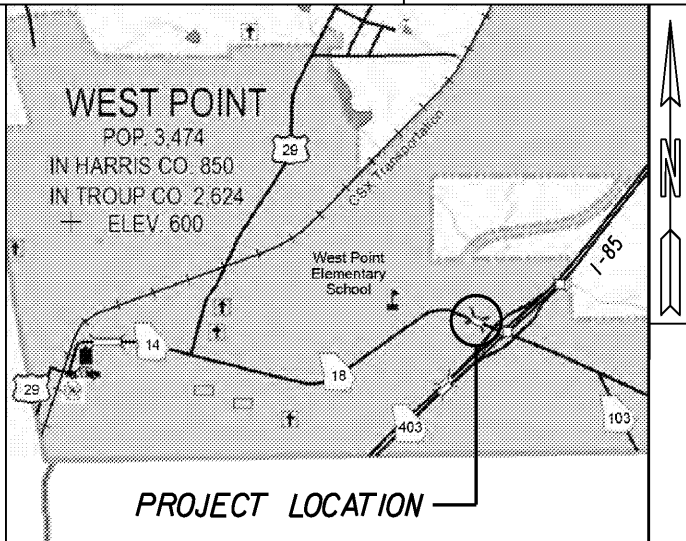
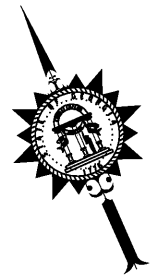


# DEPARTMENT OF TRANSPORTATION STATE OF GEORGIA

## PLAN AND PROFILE OF PROPOSED BRIDGE REPLACEMENT PROJECT SR 18/EAST 10TH STREET OVER LONG CANE CREEK TROUP COUNTY



LOCATION SKETCH

**DESIGN DATA:**  
 TRAFFIC A.D.T.: 23,955 (2022)  
 TRAFFIC A.D.T.: 32,505 (2042)  
 TRAFFIC D.H.V.: 2,545/2,380 (AM/PM)  
 DIRECTIONAL DIST: 50/50  
 % TRUCKS: 11%  
 24 HR. TRUCKS %: 12.5%  
 SPEED DESIGN: 45 MPH

LOCATION & DESIGN APPROVAL DATE: N/A

FUNCTIONAL CLASS: URBAN MINOR ARTERIAL

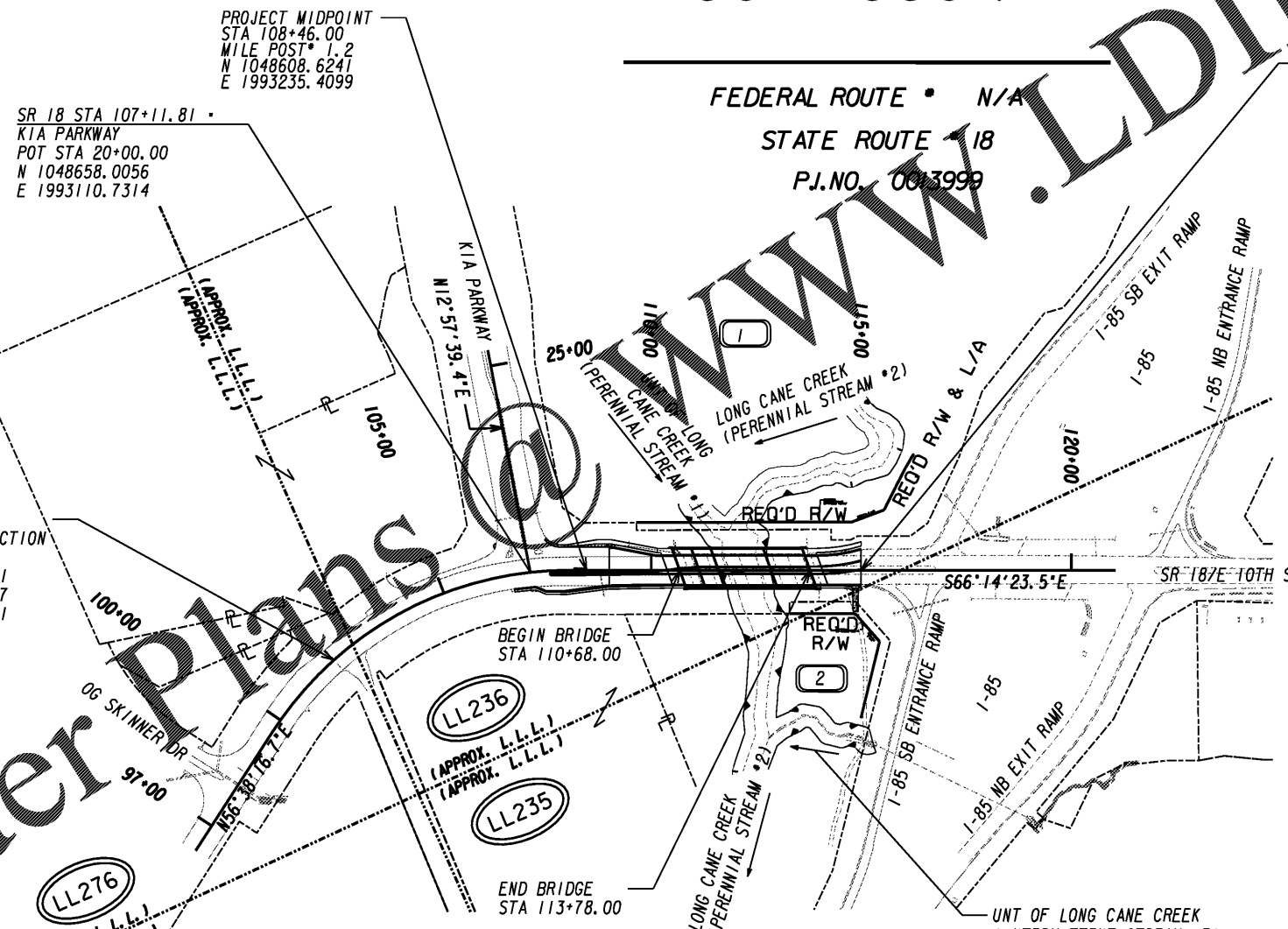
THIS PROJECT IS 100% IN TROUP COUNTY AND IS 100% IN CONG. DIST. NO. 3.

PROJECT DESIGNATION: EXEMPT

THIS PROJECT HAS BEEN PREPARED USING THE HORIZONTAL GEORGIA COORDINATE SYSTEM OF 1983 (HAD 1983/94 WEST ZONE, AND THE NORTH AMERICAN VERTICAL DATUM (NAVD) OF 1988.

PROJECT TO BE CONSTRUCTED AS PER GEORGIA DEPARTMENT OF TRANSPORTATION STANDARD SPECIFICATIONS, 2013 EDITION, AND ANY AND ALL SUPPLEMENTS TO THE 2013 GDOT SPECIFICATIONS, AS APPROVED BY THE FEDERAL HIGHWAY ADMINISTRATION AND AS MODIFIED BY CONTRACT DOCUMENTS.

THE DATA TOGETHER WITH ALL OTHER INFORMATION SHOWN ON THESE PLANS OR IN ANYWAY INDICATED THEREBY, WHETHER BY DRAWINGS OR NOTES, OR IN ANY OTHER MANNER, ARE BASED UPON FIELD INVESTIGATIONS AND ARE BELIEVED TO BE INDICATIVE OF ACTUAL CONDITIONS. HOWEVER, THE SAME ARE SHOWN AS INFORMATION ONLY, ARE NOT GUARANTEED, AND DO NOT BIND THE DEPARTMENT OF TRANSPORTATION IN ANY WAY. THE ATTENTION OF BIDDER IS SPECIFICALLY DIRECTED TO SUBSECTIONS 102.04, 102.05, AND 104.03 OF THE SPECIFICATIONS.



Order Plans

**NOTE:**  
 ALL REFERENCES IN THIS DOCUMENT, WHICH INCLUDES ALL PAPERS, WRITINGS, DOCUMENTS, DRAWINGS, OR PHOTOGRAPHS USED, OR TO BE USED IN CONNECTION WITH THIS DOCUMENT, TO "STATE HIGHWAY DEPARTMENT OF GEORGIA," "STATE HIGHWAY DEPARTMENT," "GEORGIA STATE HIGHWAY DEPARTMENT," "HIGHWAY DEPARTMENT," OR "DEPARTMENT" WHEN THE CONTEXT THEREOF MEANS THE STATE HIGHWAY DEPARTMENT OF GEORGIA, AND SHALL BE DEEMED TO MEAN THE DEPARTMENT OF TRANSPORTATION.

END PROJECT PI\*0013999  
 END CONSTRUCTION  
 BEGIN PROJECT PI\*0009975  
 STA 115+00.00 PI\*0013999  
 STA 15+00.00 PI\*0009975  
 MILE POST\* 1.3  
 N 1048345.1220  
 E 1993833.9770



**INFRASTRUCTURE CONSULTING & ENGINEERING**  
 4940 PEACHTREE INDUSTRIAL BLVD., SUITE 310  
 NORCROSS, GEORGIA 30071

PREPARED BY: \_\_\_\_\_  
 DESIGN

RECOMMENDED FOR APPROVAL BY: *Kimberly W. Nesbitt*  
 STATE PROGRAM DELIVERY ADMINISTRATOR

DATE: 12-8-20 | *Margaret B. Pikel*  
 CHIEF ENGINEER

PLANS COMPLETED 12-11-2020  
 REVISIONS: 12/15/2020: 1-0001, 2-0001,  
 3-0001, 6-0001, 6-0006, 24-0002, 24-0003,  
 44-0001 TO 44-0011

LENGTH OF PROJECT		COUNTY No. 285
		Project No. 0013999
		MILES
NET LENGTH OF ROADWAY	0.232	
NET LENGTH OF BRIDGES	0.059	
NET LENGTH OF PROJECT	0.291	
NET LENGTH OF EXCEPTIONS	0.000	
GROSS LENGTH OF PROJECT	0.291	

