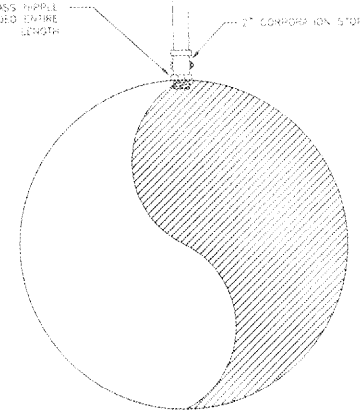
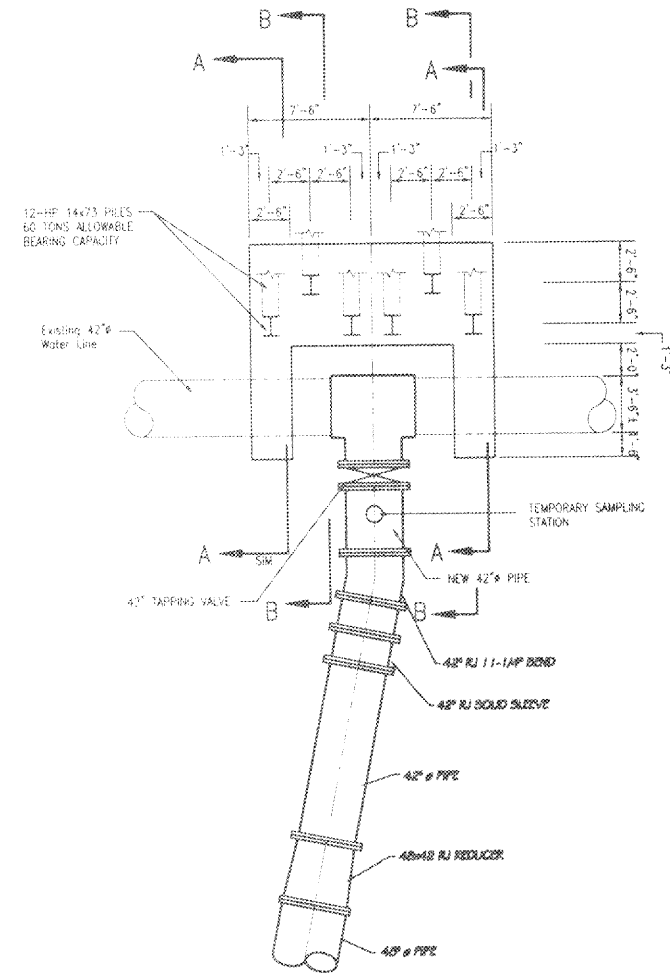


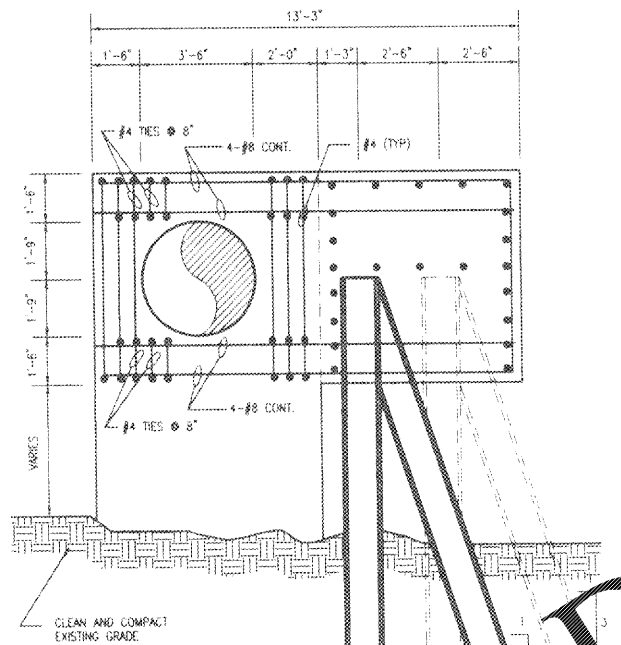
90° BEND
2x1" REDUCER
18" MIN.
2" CORPORATION STOP WITH PRESSURE OR BARREL LOCK
2" CORPORATION STOP
2" CORPORATION STOP WITH PRESSURE OR BARREL LOCK
CORPORATION STOP SHALL BE TURNED OFF, 90° BEND REMOVED AND CORPORATION STOP PLUGGED AFTER WATER SAMPLES HAVE PASSED
EXISTING CORPORATION STOP SHALL BE SECURELY LOCKED AT ALL TIMES



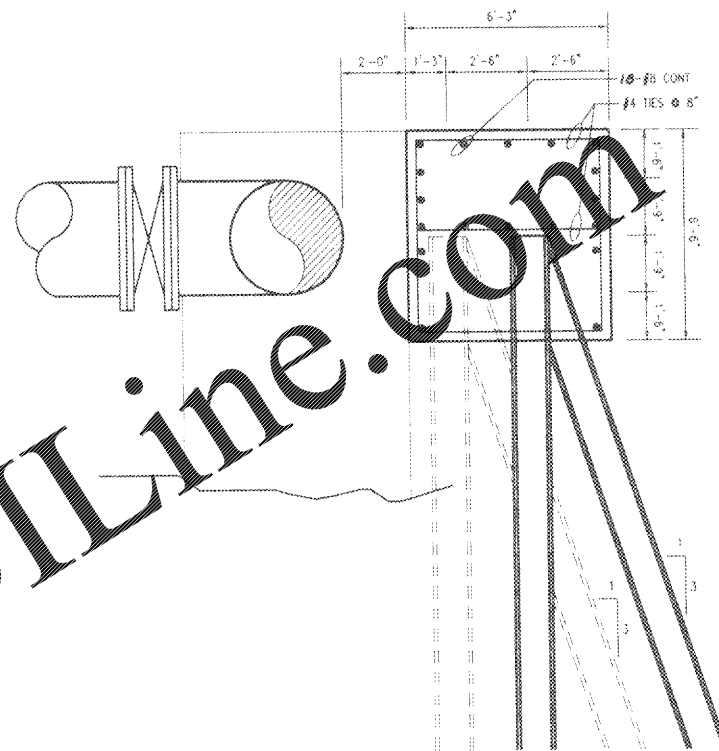
TEMPORARY SAMPLING STATION
NOT TO SCALE



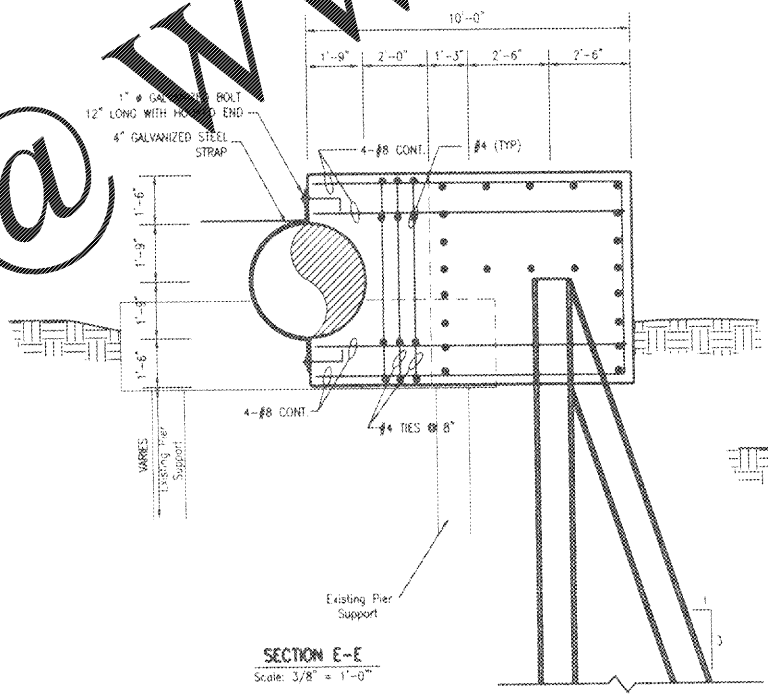
CONNECTION TO EXISTING 42" STA 0+00
Scale: 3/16" = 1'-0"



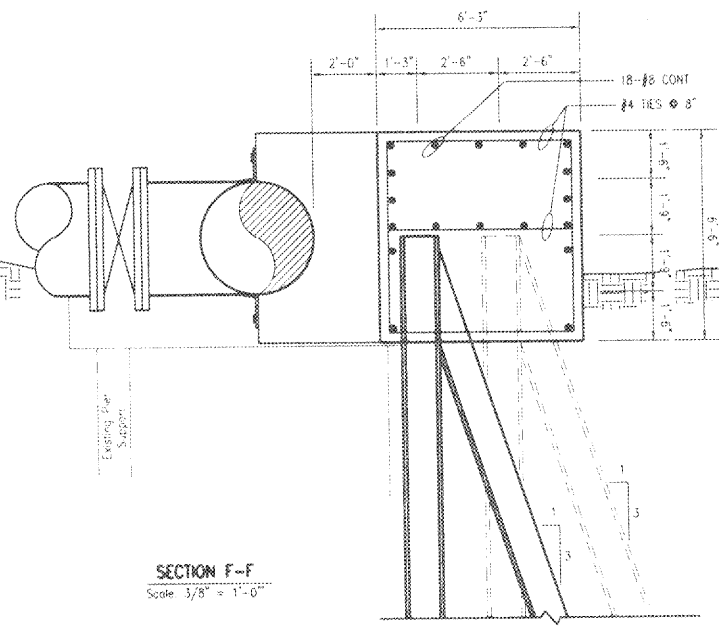
SECTION A-A
Scale: 3/8" = 1'-0"



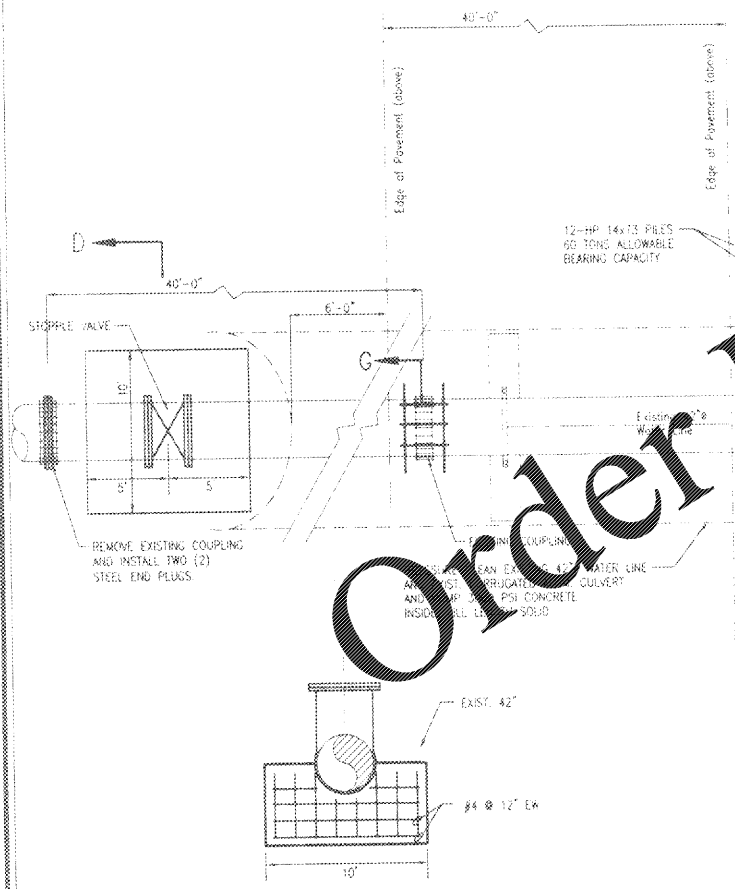
SECTION B-B
Scale: 3/8" = 1'-0"



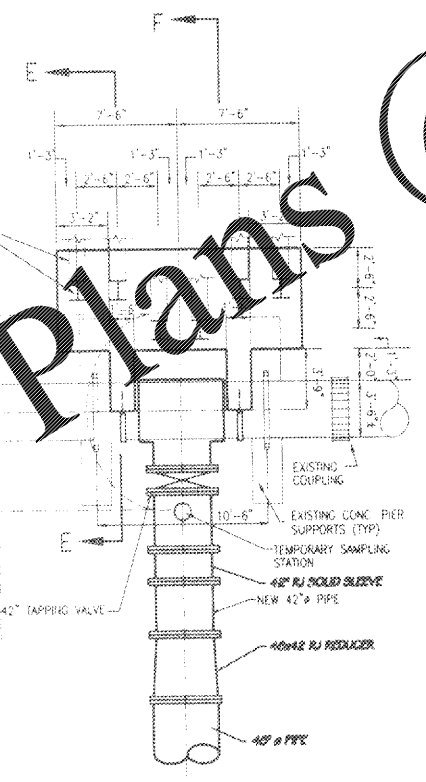
SECTION E-E
Scale: 3/8" = 1'-0"



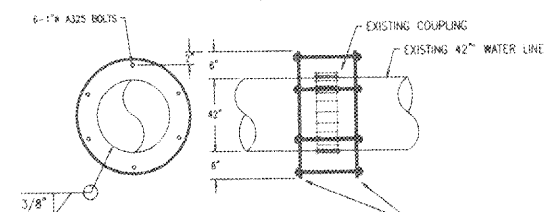
SECTION F-F
Scale: 3/8" = 1'-0"



SECTION D- STOPPLE SUPPORT
Scale: 3/16" = 1'-0"



CONNECTION TO EXISTING 42" STA 63+85
Scale: 3/16" = 1'-0"



SECTION G
NOT TO SCALE

Order Plans @

www.LDILine.com

RECORD
DRAWING
JUNE 1997

HUSSEY, GAY, BELL & DEYOUNG INC.
CONSULTING ENGINEERS
100 COMMERCIAL DRIVE
SUITE 100
SARASOTA, FLORIDA 34236
PHONE: 941-552-1100
FAX: 941-552-1101



NO.	DATE	BY	CHKD	SCALE

PROJECT	DATE	NO.	SCALE

1 & D WATER LINE REPLACEMENT
FOR THE
CITY OF SARASOTA
MISCELLANEOUS DETAILS

DRAWING NUMBER
C-09
09 OF 11 SHEETS

G915