

1 2 3 4 5 6

E
D
C
B
A



Mark	Description	Date	Appr

GEORGIA PORTS AUTHORITY
GCT CAPACITY IMPROVEMENTS - PHASE 2
ONE-LINE DIAGRAM

Designed by: JAG	Date: 12/21/20	Rev:
Dwn by: BRL	M&M Project No: 5531-264B	
Reviewed by: JHP	DAW	
Submitted by: MOFATT & NICHOL	GPA Project No.: 1910-1011C	Drawing Scale: AS NOTED
		Plot scale: 1:1 (0 SHEET)

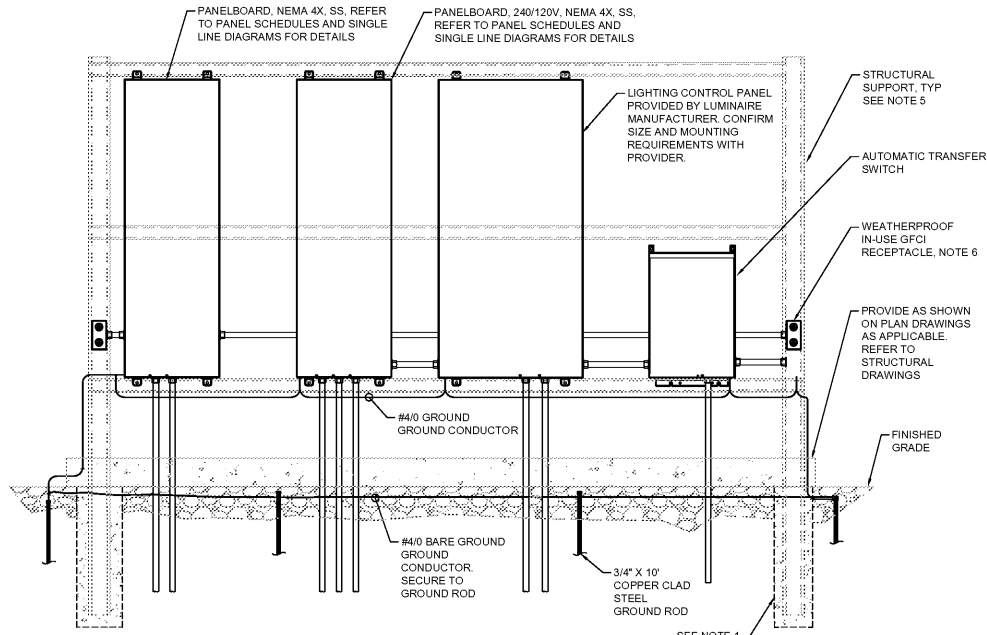
2 EAST BRYAN ST., STE 601
SAVANNAH, GA 31401
912.231.0044
mofatt & nichol

SEAL

Sheet Reference No.
E-601
INDEX: OF

GENERAL SHEET NOTES

- SEE SHEET E-001 FOR ELECTRICAL GENERAL NOTES.
- SEE SHEET E-002 FOR ABBREVIATIONS AND LEGEND.
- SEE SHEET E-604 FOR ELECTRICAL PANEL SCHEDULES.

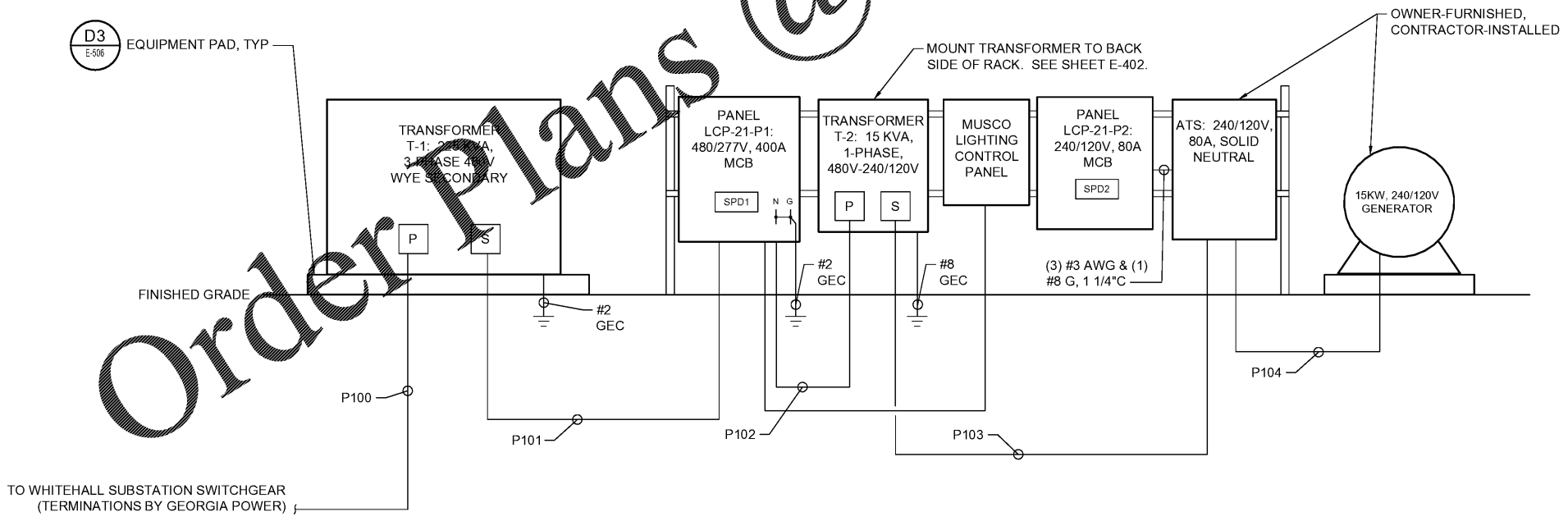


NOTES

- EXTEND 5' MIN INTO GROUND. PROVIDE 3" MIN CONCRETE ENCASEMENT OF STEEL SUPPORT UNDERGROUND. PAINT SUPPORT ASSEMBLY WITH (2) COATS OF ZINC RICH PRIMER AND FINISH WITH (2) COATS OF PAINT.
- PROVIDE GROUND BUSHINGS ON ALL CONDUITS.
- REFER TO SINGLE LINE AND PANEL SCHEDULE FOR ADDITIONAL INFORMATION.
- TRANSITION FROM PVC TO RGS CONDUIT UNDERGROUND PRIOR TO CONDUIT ELBOW.
- 6" X 6" X 1/2" SQUARE TUBE STEEL FILLED WITH CONCRETE. PAINT WITH (2) COATS OF ZINC PRIMER AND (2) GRAY FINISH COATS.
- PROVIDE 120V, 20A WEATHERPROOF GFI RECEPTACLE TO BOTH SIDES OF RACK. PROVIDE 2-#12, #12 GND IN 3/4" RGS CONDUIT FOR RECEPTACLE CIRCUIT FROM ADJACENT PANELBOARD.
- THE GROUND ROD CLUSTER FOR THE ELECTRICAL RACK SERVICE GROUND SHALL CONSIST OF THREE 3/4" X 10'-0" COPPER CLAD STEEL GROUND RODS. THEY SHALL BE DRIVEN IN A TRIANGULAR CONFIGURATION APPROXIMATELY 20' APART ENCOMPASSING THE RACK AND INTER-CONNECTED IN DELTA CONFIGURATION WITH A #4/0 BARE COPPER CONDUCTOR. CONNECTION TO THE RODS SHALL BE WITH EXOTHERMIC WELDS. TOPS OF THE RODS SHALL BE 12" BFG. PROVIDE GROUNDING TEST WELL AT ONE OF THE GROUND RODS. CONNECT EACH PANEL AND TRANSFORMER WITH AT LEAST TWO CONNECTIONS TO DELTA GROUND WITH 10' SEPARATION.
- PROVIDE SEISMIC BRACING FOR ALL ELECTRICAL AND COMMUNICATIONS EQUIPMENT RACKS AND ENCLOSURES. BRACING SHALL BE DESIGNED FOR SEISMIC CATEGORY 'D'.

C1 EQUIPMENT-MOUNTING RACK (TYP)
E-601 SCALE: NTS

POWER DISTRIBUTION EQUIPMENT AREA LCP-21



D3 EQUIPMENT PAD, TYP
E-506

A1 ONE-LINE DIAGRAM
E-601 SCALE: NTS

BID ISSUE
ISSUED: 2021-02-03
NOT TO BE USED FOR CONSTRUCTION
DRAWING SCALES SHOWN BASED ON 22"x34" DRAWING

File: Q:\1516531-264-2020 Capacity Improvements\600 CAD\1_Active\2020_Panel_Elec\5531264E-601_Plot.dwg, Plotter: 2/3/2021 12:42 AM by GREGG, ALAN, Sheet: 2/2/2021 1:19 PM by AGREGG