

1 2 3 4 5 6

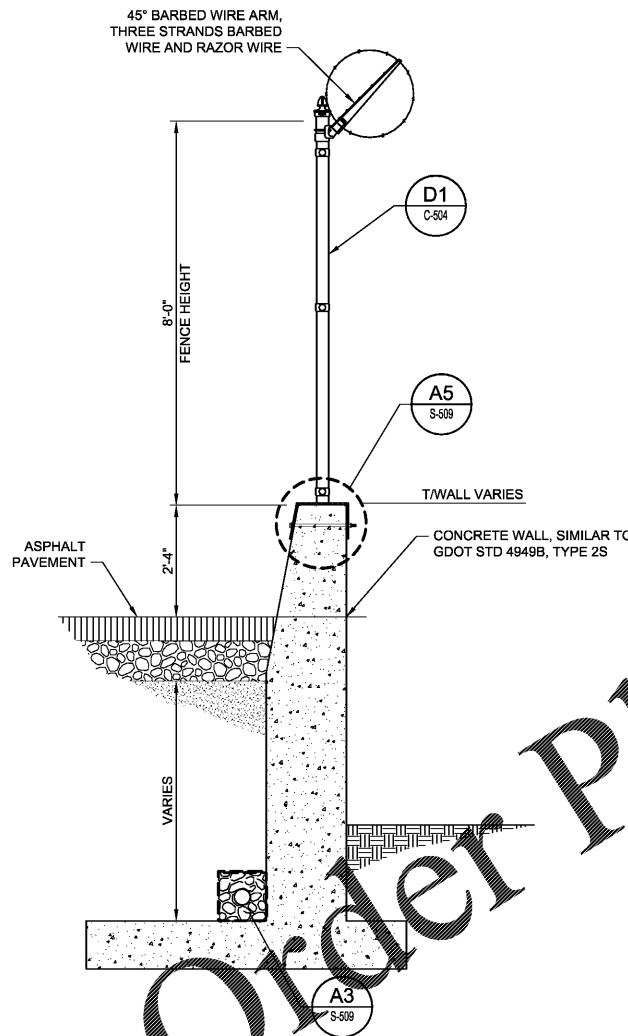
E

D

C

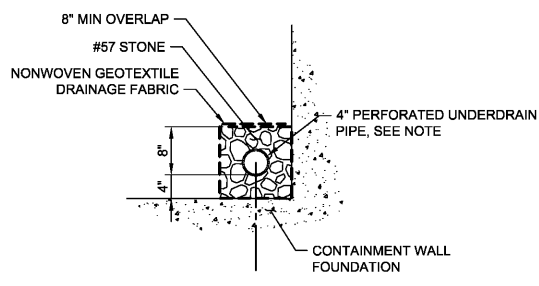
B

A



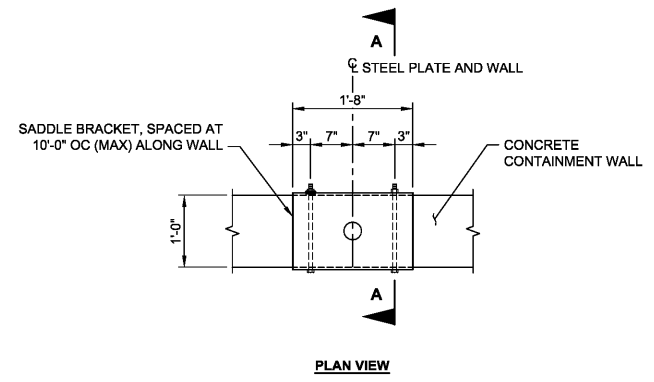
- NOTES (SECTION A1)**
- SEE REFERENCE DRAWING, GDOT STD 4949B DETAIL.
  - DRAINAGE PROVISIONS OF GDOT STD 4949B SHALL BE USED, BUT PERFORATED DRAIN SHALL BE INSTALLED IN LIEU OF WEEP HOLES.

**A1 SECTION**  
S-509 SCALE: 1/2" = 1'-0"

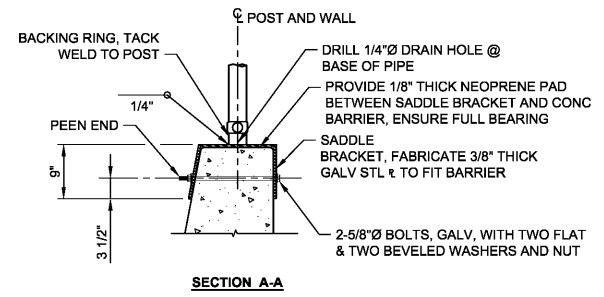


**NOTE (DETAIL B2)**  
CONTRACTOR TO USE HANCOR SMOOTHWALL OR ADS 3000 HDPE OR APPROVED EQUAL, UNLESS OTHERWISE NOTED.

**A3 DETAIL**  
S-509 SCALE: 3/4" = 1'-0"

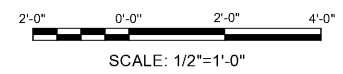


**PLAN VIEW**

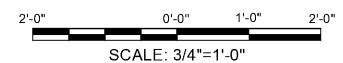


**SECTION A-A**

**A5 DETAIL**  
S-509 SCALE: 3/4" = 1'-0"



SCALE: 1/2" = 1'-0"

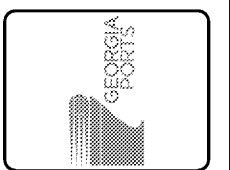


SCALE: 3/4" = 1'-0"

**ISSUED FOR BID**  
2021/02/03  
**NOT TO BE USED FOR CONSTRUCTION**

DRAWING SCALES SHOWN BASED ON 22"x34" DRAWING

Order Plans @ www.LDILine.com



Rev.	0
Date:	02/03/2021
Drawn by:	JRP
Checked by:	MRP
Submitted by:	MOFATT & NICHOL
Per scale:	1:1 (0 SHEET)

**GEORGIA PORTS AUTHORITY**  
GCT CAPACITY IMPROVEMENTS - PHASE 2  
**DETAIL SHEET 9 OF 9**

MMM Project No.	5531-264B
GPA Project No.	1910-1011C
Drawn by:	JRP
Checked by:	MRP
Submitted by:	MOFATT & NICHOL
Per scale:	1:1 (0 SHEET)

2 EAST BRYAN ST., STE 501  
SAVANNAH, GA 31401  
912.231.0044  
**mofatt & nichol**

SEAL

Sheet Reference No.  
**S-509**  
INDEX: OF

1 2 3 4 5 6

File: I:\mre.net\projects\1516337-264\2020 capacity improvements\600 CAD\DWG\_Active\Phase2\_2020\_park\_civil\5531-264-S509.dwg; Plotter: 2/2/2021 9:19 AM by SMILEX, NICK; Saved: 2/2/2021 4:00 PM by NSMILEX