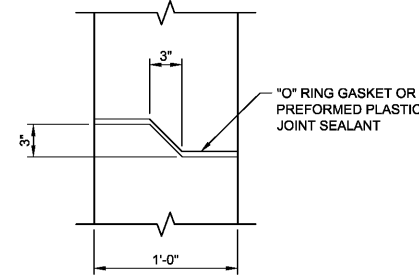


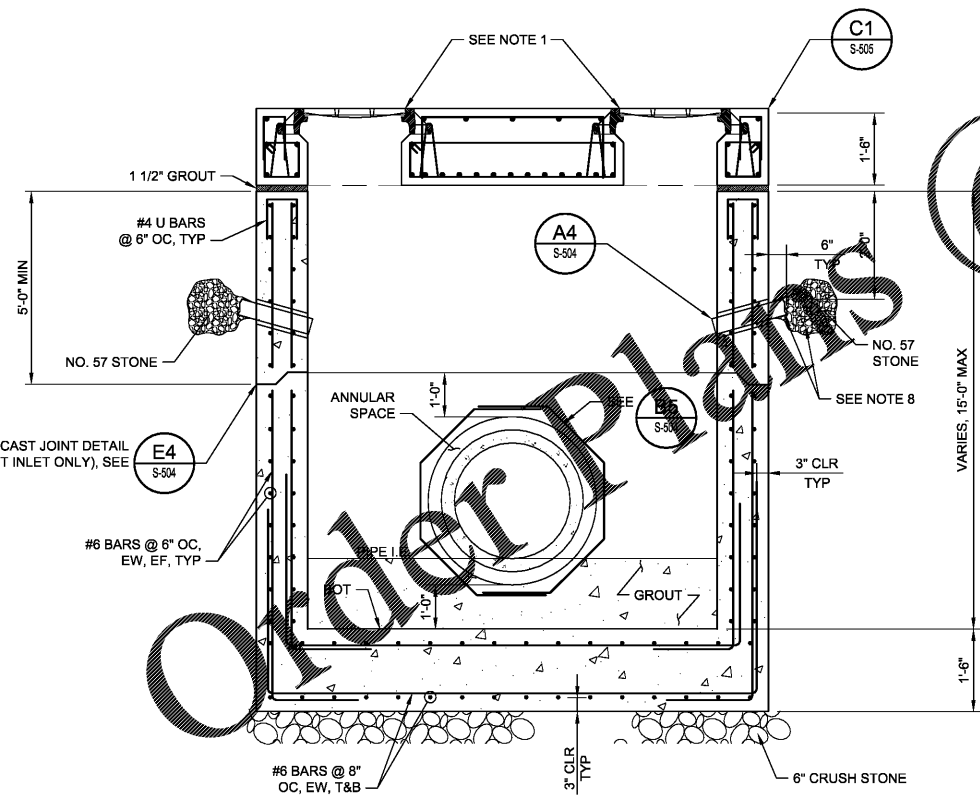
**A4** DETAIL  
C-601  
SCALE: 1/2" = 1'-0"



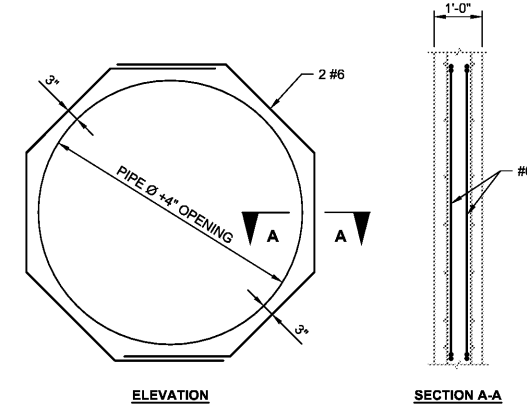
**E4** DETAIL  
S-504  
SCALE: NTS

**INLET NOTES**

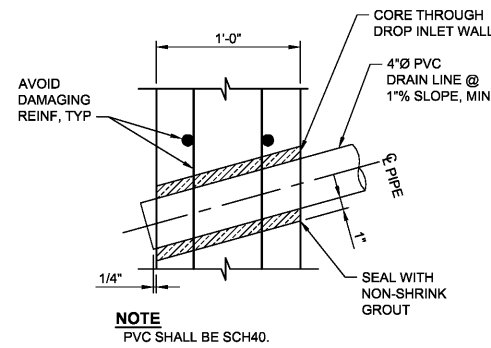
1. FRAME AND GRATES SHALL BE AS FOLLOWS (OR APPROVED EQUALS):  
NEENAH R-4994-HAB (TYPE A GRATE AND TYPE S FRAME)
2. GRATE SHALL BE BOLTED TO THE FRAME.
3. MINIMUM INSIDE WALL DIMENSION "W1" AND "W2" SHALL BE DETERMINED BY THE FORMULA  $W=(O.D./\sin \text{ANGLE})+2$ , BUT IN NO CASE SHALL THE DIMENSION "W" BE LESS THAN 4 FEET NOR MORE THAN 8 FEET.
4. OPENINGS IN THE WALLS FOR PIPE SHALL BE CAST-IN OR CUT CLEANLY WITHOUT PERCUSSION TO A MAXIMUM DIAMETER OF O.D.  $\pm 3$ ". THE SPACE BETWEEN PIPE AND WALL SHALL THEN BE FILLED WITH NON SHRINK GROUT, OR APPROVED JOINT INSERT ASSEMBLY.
5. COMPONENTS OF EACH STRUCTURE (BASE, TOP, RISER, ETC) SHALL NOT BE CAST UNTIL THE REINFORCEMENT, CLEARANCES, AND BLOCKOUTS OF THE PREVIOUS COMPONENT HAVE BEEN INSPECTED BY THE OWNER'S REPRESENTATIVE. PROTECT NOTIFICATION ONE WEEK PRIOR TO CASTING AND CONFIRMATION TWO DAYS PRIOR TO CASTING. CASTING OF COMPONENT SHALL NOT OCCUR UNTIL APPROVED BY THE OWNER'S REPRESENTATIVE.
6. PRECASTER SHALL BE RESPONSIBLE FOR DESIGNING LIFTING PROVISIONS.
7. FOR PRECAST CONCRETE SECTIONS, MINIMUM COVER IS 2". FOR CAST-IN-PLACE CONCRETE SECTIONS, MINIMUM COVER IS 3".
8. SECURELY TIE 1 CUBIC FOOT OF NO. 57 STONE IN BAG OF NON-WOVEN FILTER FABRIC. ENSURE POSITIVE CLOSURE AROUND PIPE TO PREVENT MATERIAL FROM MIGRATING OUT OF PIPE.



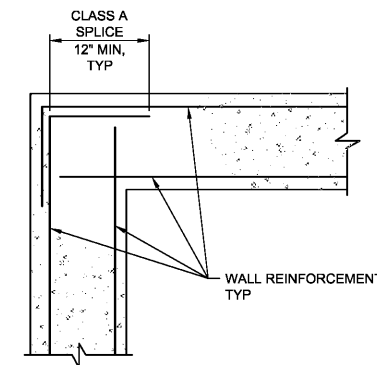
**A1** SECTION  
S-504  
SCALE: NTS



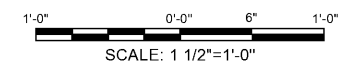
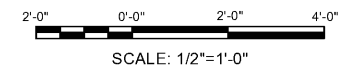
**B5** DETAIL  
S-504  
SCALE: NTS



**A4** DETAIL  
S-504  
SCALE: 1 1/2" = 1'-0"

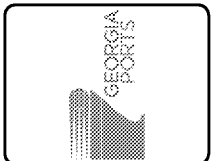


**A5** DETAIL  
S-504  
SCALE: NTS



ISSUED FOR BID  
2021/02/03  
NOT TO BE USED FOR CONSTRUCTION

DRAWING SCALES SHOWN BASED ON 22"x34" DRAWING



Rev.	Date	Description	Drawn	Checked	Appr.
0					

GEORGIA PORTS AUTHORITY  
GCT CAPACITY IMPROVEMENTS - PHASE 2  
DETAIL SHEET 4 OF 9

Designed by:	SEW	Date:	0
Drawn by:	NES	MM Project No.:	5531-264B
Checked by:	JRP	GPA Project No.:	1910-1011C
Reviewed by:	MRP	Drawn Scale:	AS NOTED
Submitted by:	MOFFATT & NICHOL	Per Scale:	1:1 (0 SHEET)

2 EAST BRYAN ST., STE 501  
SAVANNAH, GA 31401  
912.231.0044  
moffatt & nichol

Sheet Reference No.  
**S-504**

INDEX: OF