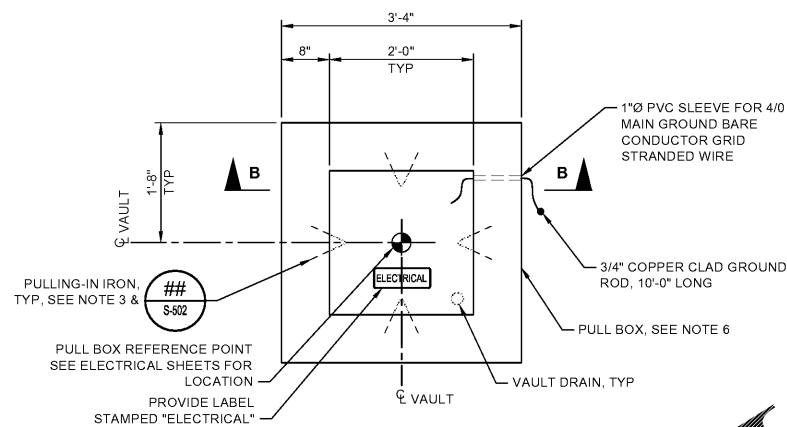
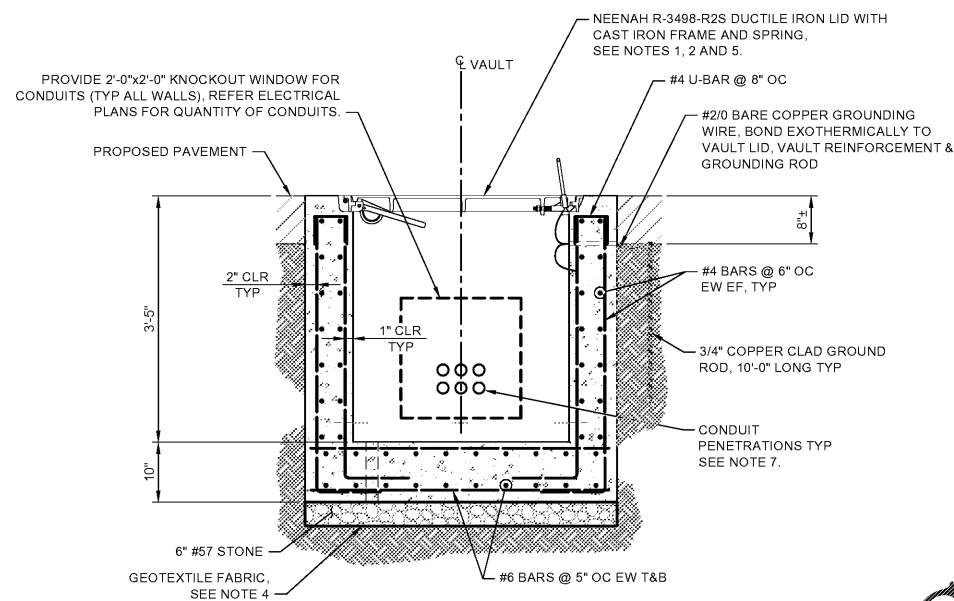


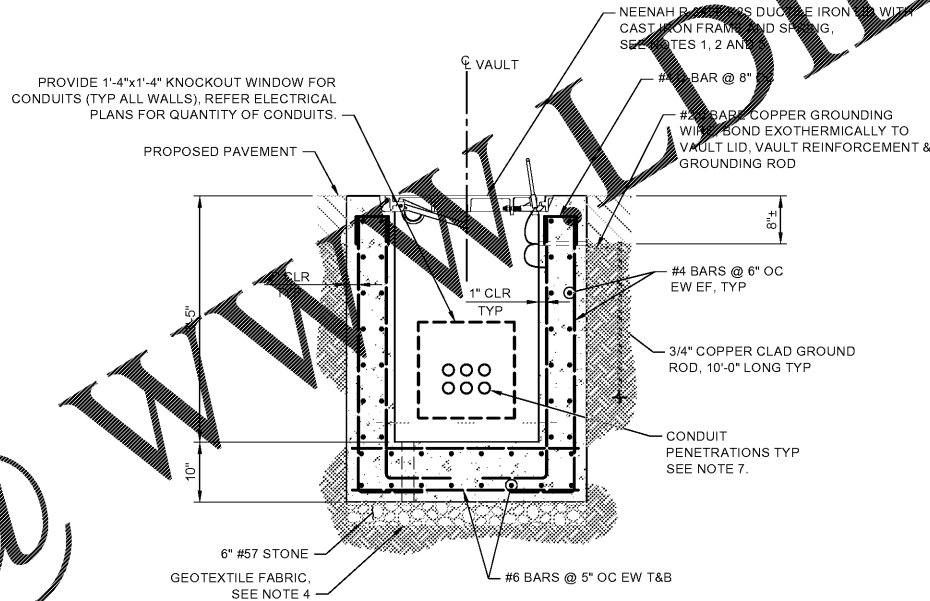
PLAN



PLAN



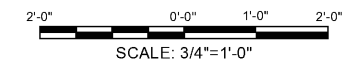
SECTION A-A



SECTION B-B

B1 ELECTRICAL VAULT DETAIL - SIZE B
S-503 SCALE: 3/4" = 1'-0"

C4 ELECTRICAL VAULT DETAIL - SIZE C
S-503 SCALE: 3/4" = 1'-0"

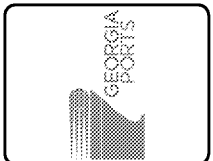


ISSUED FOR BID
2021/02/03
NOT TO BE USED FOR CONSTRUCTION

DRAWING SCALES SHOWN BASED ON 22"x34" DRAWING

NOTES

1. GROUT SPACE AROUND DUCT BANKS AFTER CONDUIT INSTALLED. FOR NUMBER OF CONDUIT PENETRATIONS, SEE ELECTRICAL PLANS.
 2. COVER SHALL BE FURNISHED WITH RECESSED BOLTS, OPENING DEVICES AND SAFETY SUPPORT ARMS.
 3. FURNISH PULLING-IN IRON OPPOSITE OF DUCT ENTRANCES.
 4. OVERLAP GEOTEXTILE FABRIC (MIRAFI 500 OR EQUAL) 1'-0" UNDER STRUCTURE.
 5. CONTRACTOR TO VERIFY THE DIRECTION COVER OPEN WITH THE OWNER.
 6. PULL BOXES SHALL COMPLY WITH NATIONAL ELECTRICAL CODE. ALL WIRING SPlicing SHALL BE AT APPROVED SPlicing AND CONDUITS SEALED.
- PROVIDE CONDUIT TAGS WITH CABLE SCHEDULE NUMBER ON EACH CONDUIT AND WIRE ENTERING AND LEAVING PULL BOX.



Rev.	Date	Description
0	2/02/2021	ISSUE FOR BID

GEORGIA PORTS AUTHORITY
GCT CAPACITY IMPROVEMENTS - PHASE 2
DETAIL SHEET 3 OF 9

Designed by:	SEW	Date:	0
Dwn by:	NES	MM Project No.:	5531-264B
Reviewed by:	MRP	GPA Project No.:	1910-1011C
Submitted by:	MOFATT & NICHOL	Drawing Scale:	AS NOTED
		Per scale:	1:1 (0 SHEET)

2 EAST BRYAN ST., STE 501
SAVANNAH, GA 31401
912.231.0044

moffatt & nichol

SEAL

Sheet Reference No.
S-503
INDEX: OF

Order Plans @ www.WWLDIline.com