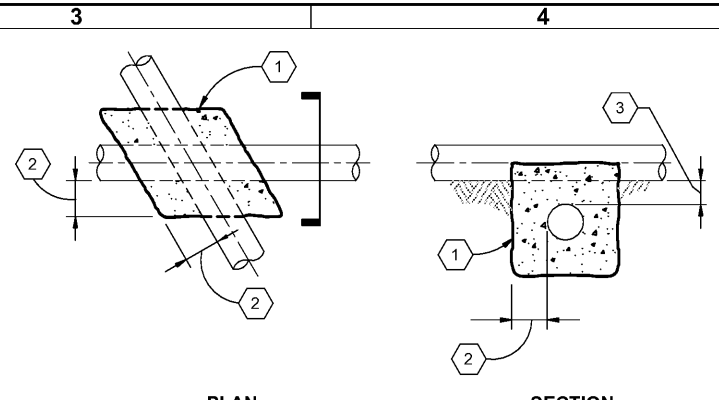
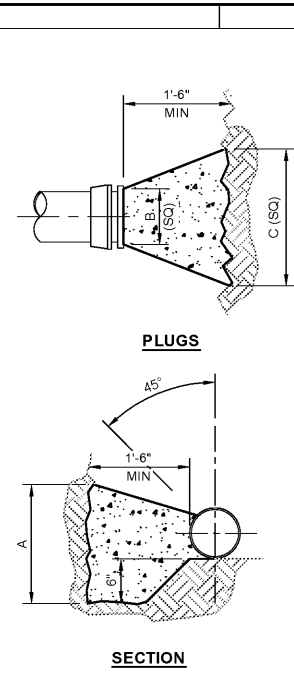


PIPE SIZE	90° BEND		45° BEND		TEES		PLUGS	
	A	B	A	B	A	B	C	
4"	1'-6"	1'-6"	1'-6"	1'-6"	1'-6"	6"	1'-0"	
6"	2'-3"	1'-9"	2'-3"	8"	1'-4"			
8"	2'-8"	2'-3"	2'-8"	10"	2'-6"			
10"	3'-8"	2'-8"	3'-8"	12"	3'-0"			
12"	4'-3"	3'-2"	4'-3"	14"	3'-4"			

NOTE (DETAIL D1 ONLY)
 RESTRAINED JOINTS MAY BE USED IN LIEU OF THRUST BLOCKING. CONTRACTOR TO PROVIDE CALCULATION FOR LENGTH OF RESTRAINED PIPE FOR EACH APPLICATION. WORKING PRESSURE = 50 PSI.

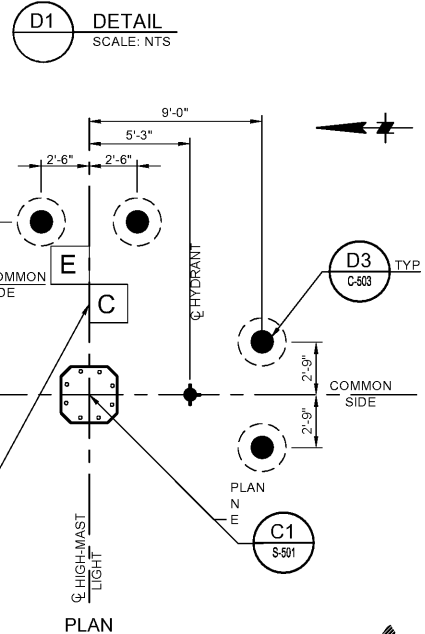


NOTE (DETAIL D3 ONLY)

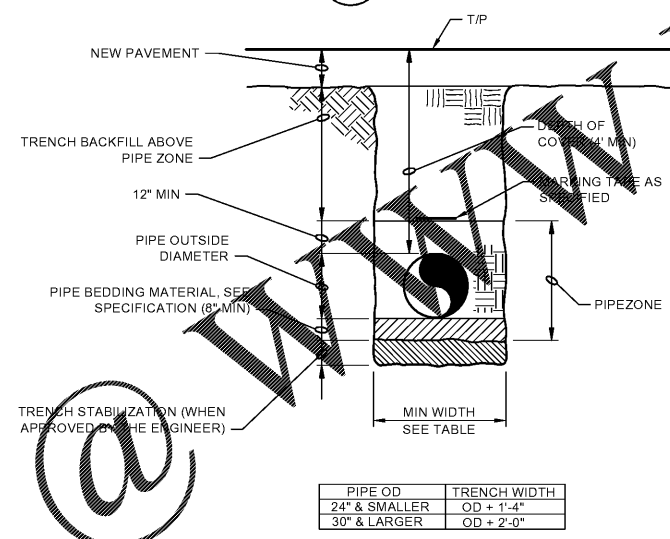
- WHEN BOTH PIPELINES ARE NEW AND CLEARANCE BETWEEN THEM IS LESS THAN 12".
- WHEN NEW PIPELINE IS CROSSING OVER AN EXISTING PIPELINE AND THE CLEARANCE BETWEEN THEM IS THAN 12".
- AT ALL PIPE CROSSINGS WHERE A NEW PIPELINE IS CROSSING UNDER AN EXISTING PIPELINE.
- REFER TO SPECIFICATION SECTION 02300 FOR CLSM REQUIREMENTS.

LEGEND

- 1 CONTROLLED LOW-STRENGTH MATERIAL (CLSM)
- 2 12" TYP, BOTH SIDES
- 3 MIN ALLOWABLE CLR IS 3"



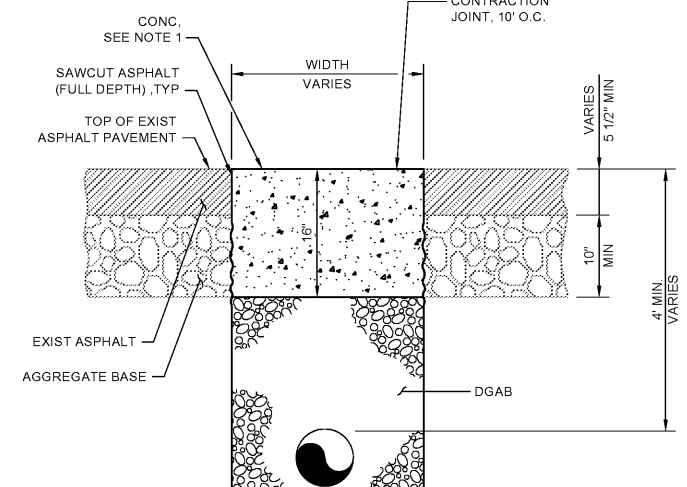
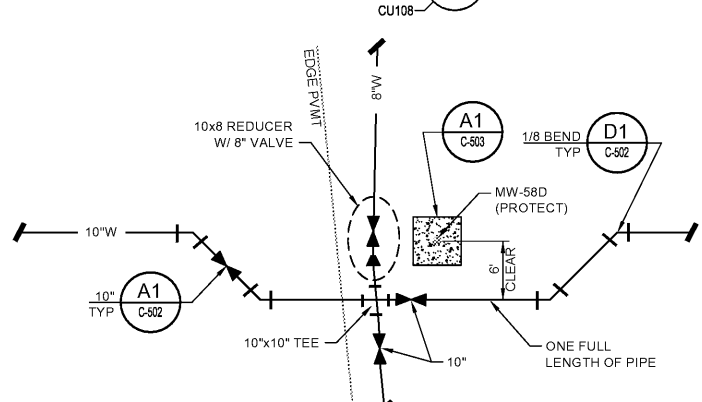
D3 DETAIL (PIPE CROSSING)
 SCALE: 1" = 1'-0"



PIPE OD	TRENCH WIDTH
24" & SMALLER	OD + 1'-4"
30" & LARGER	OD + 2'-0"

NOTE (DETAIL B3)
 MARKING TAPE SHALL BE UTILIZED ON ALL DUCT BANKS (E-BUR) AND FIRE PROTECTION LINES. TAPE SHALL BE DETECTABLE, SOLID ALUMINUM FOIL ENCASED IN POLYETHYLENE JACKET, 6 INCH WIDTH, MUTUAL INDUSTRIES OR EQUAL (BLUE = WATER, RED = ELECTRICAL, ORANGE = COMMUNICATION)

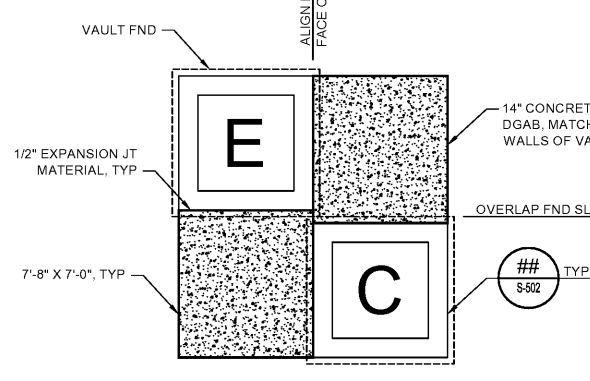
B3 DETAIL (NEW PAVEMENT AREAS)
 SCALE: NTS



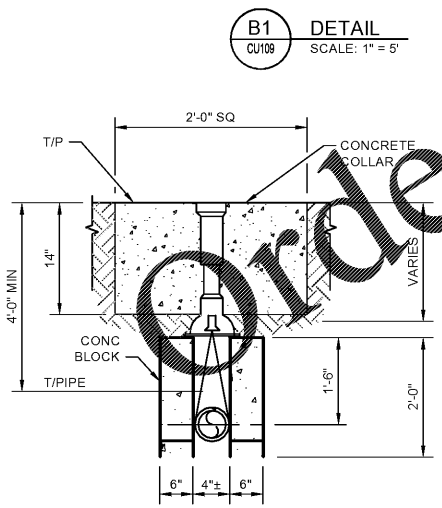
NOTE (DETAIL B5)

- TOP OF CONCRETE TO MATCH TOP OF EXISTING PAVEMENT.
- DEMOLITION OF THE EXISTING PAVEMENT NOT ILLUSTRATED.
- DETAIL SHALL BE USED FOR PAVEMENT REPAIR OF NONE CONDUIT AND PIPE APPLICATIONS SUCH AS VAULTS.
- CONCRETE SHALL BE IN ACCORDANCE WITH SECTION 03300 OF THE SPECIFICATIONS.

B5 DETAIL (EXISTING PAVEMENT AREAS)
 SCALE: NTS

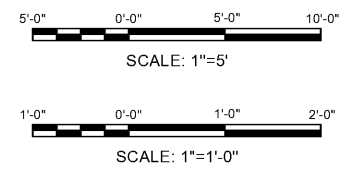


A5 DETAIL
 SCALE: 1" = 5"



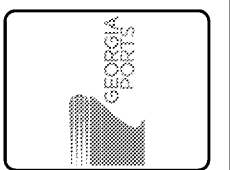
A1 DETAIL (VALVE BOX)
 SCALE: 1" = 1'-0"

A3 DETAIL
 SCALE: 1" = 10"



ISSUED FOR BID
 2021/02/03
 NOT TO BE USED FOR CONSTRUCTION

DRAWING SCALES SHOWN BASED ON 22"x34" DRAWING



Rev	Date	Description
0	02/03/2021	ISSUE FOR BID

GEORGIA PORTS AUTHORITY
 GCT CAPACITY IMPROVEMENTS - PHASE 2
 DETAIL SHEET 2 OF 1

Designed by: JHP	Date: 0
Dwn by: RJM	MM Project No: 5531-264B
Reviewed by:	GPA Project No: 1910-1011C
Submitted by: MOFFATT & NICHOL	Drawing Scale: AS NOTED
	Plot scale: 1" = 10' (SHEET)

2 EAST BRYAN ST., STE 501
 SAVANNAH, GA 31401
 912.231.0044
moffatt & nichol

Sheet Reference No.
C-502

INDEX: OF