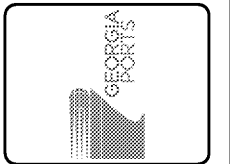


MATCH LINE - SEE SHEET CG107 FOR CONTINUATION

NOTES

- 1. UNLESS OTHERWISE INDICATED, UNIFORMLY GRADE ALONG CL OF FUTURE RUNWAYS, TYP.
- 2. ASPHALT BASE COURSE SHALL BE PLACED IN THE EAST/WEST DIRECTION. ASPHALT SURFACE COURSE SHALL BE CONSTRUCTED IN THE NORTH/SOUTH DIRECTION UNLESS OTHERWISE APPROVED BY THE OWNER'S REPRESENTATIVE.



NO.	DATE	DESCRIPTION
0	02/02/2021	JHP

GEORGIA PORTS AUTHORITY
GCT CAPACITY IMPROVEMENTS - PHASE 2

PAVING, GRADING & DRAINAGE PLAN

Designed by:	JHP	Date:	0
Drawn by:	JAH	MAN Project No.:	5531-264B
Reviewed by:		GPA Project No.:	1910-1011C
Submitted by:	MOFFATT & NICHOL	Drawing Scale:	AS NOTED
		Plot scale:	1" = 30' (SHEET)

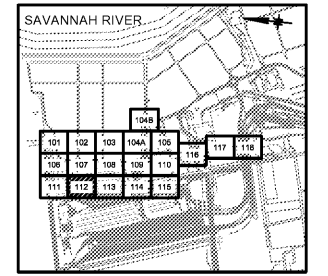
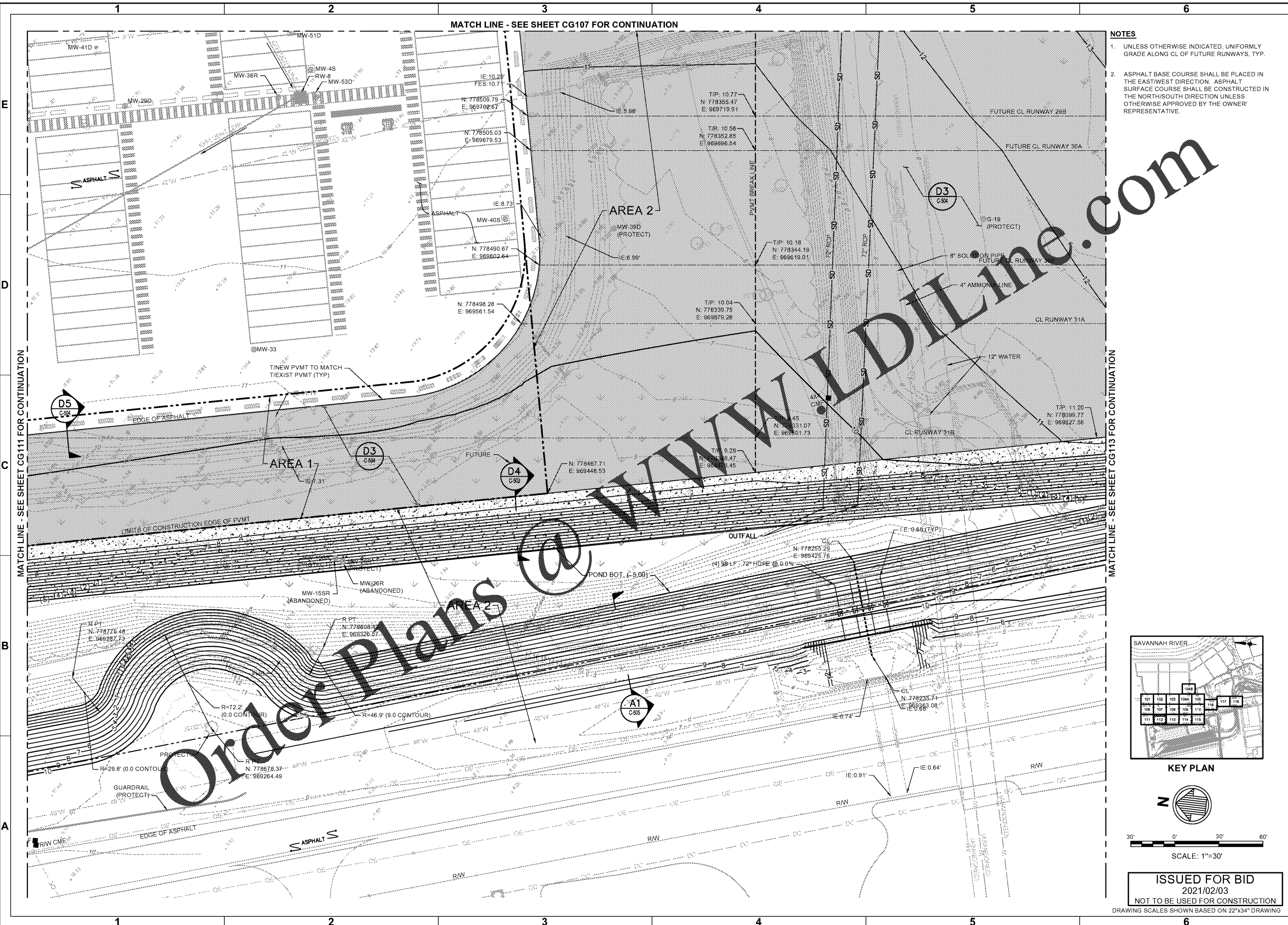
2 EAST BRYAN ST., STE. 601
SAVANNAH, GA 31401
912.231.0044

moffatt & nichol

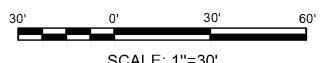
SEAL

Sheet Reference No.
CG112

INDEX: OF



KEY PLAN



SCALE: 1"=30'

ISSUED FOR BID
2021/02/03
NOT TO BE USED FOR CONSTRUCTION

DRAWING SCALES SHOWN BASED ON 22"x34" DRAWING

Order Plans @ www.dilme.com

MATCH LINE - SEE SHEET CG111 FOR CONTINUATION

MATCH LINE - SEE SHEET CG113 FOR CONTINUATION