

MATCH LINE - SEE SHEET CG103 FOR CONTINUATION

NOTES

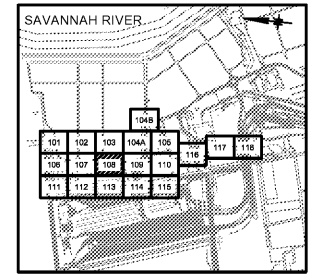
- 1. UNLESS OTHERWISE NOTED, UNIFORMLY GRADE ALONG CL OF RUNWAYS.
- 2. ASPHALT BASE COURSE SHALL BE PLACED IN THE EAST/WEST DIRECTION. ASPHALT SURFACE COURSE SHALL BE PLACED IN THE NORTH/SOUTH DIRECTION UNLESS OTHERWISE APPROVED BY THE OWNER'S REPRESENTATIVE.

LEGEND

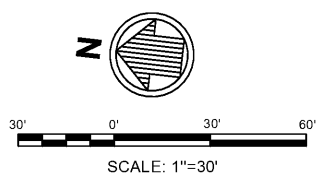
NEW PAVEMENT

POINT TABLE

NO.	T/P	NORTHING	EASTING
1	16.77	777448.09	970232.03

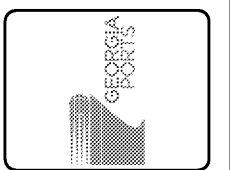


KEY PLAN



ISSUED FOR BID
2021/02/03

NOT TO BE USED FOR CONSTRUCTION
DRAWING SCALES SHOWN BASED ON 22"x34" DRAWING



NO.	DATE	DESCRIPTION
0	02/03/2021	JHP

GEORGIA PORTS AUTHORITY
GCT CAPACITY IMPROVEMENTS - PHASE 2
PAVING, GRADING & DRAINAGE PLAN

Designed by:	JHP	Date:	0
Dwn by:	JAH	MAN Project No.:	5531-264B
Reviewed by:		GPA Project No.:	1910-1011C
Submitted by:	MOFFATT & NICHOL	Drawing Scale:	AS NOTED
		Plot scale:	1" = 30' (SHEET)

2 EAST BRYAN ST., STE 601
SAVANNAH, GA 31401
912.231.0044
moffatt & nichol

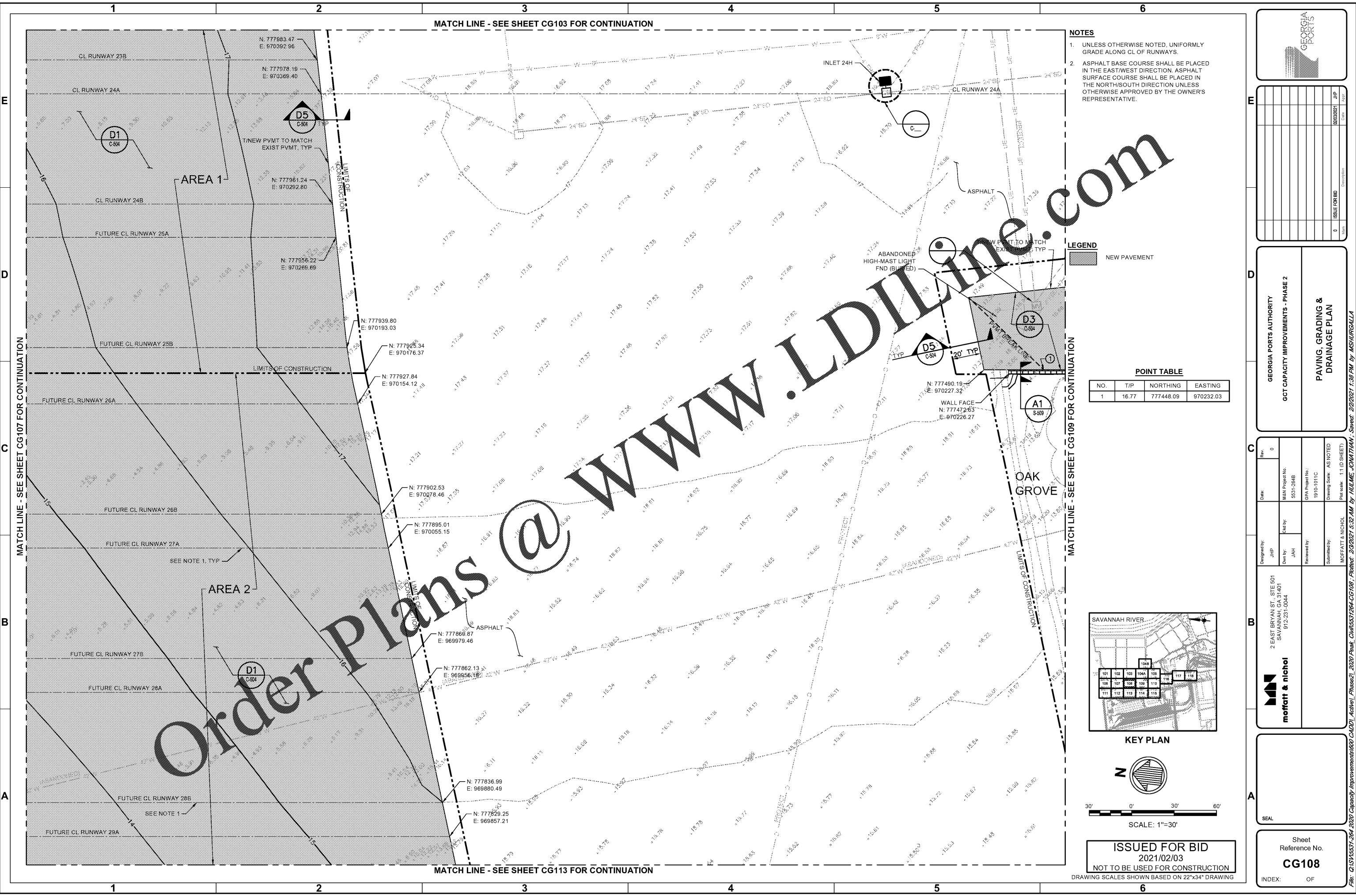
SEAL

Sheet Reference No.
CG108
INDEX: OF

File: C:\SV\5531-264_2020 Capacity Improvements\600 CADD\1_Achiel_Phase2_2020 Paving, Grading & Drainage\CG108 - Paving, Grading & Drainage - Phase 2.dwg, 2/3/2021 5:32 AM by HULME, CAMILIAN, Sheet: 2/2021 1:38 PM by MSHURGALLA

Order Plans @ www.LDinline.com

www.LDinline.com



MATCH LINE - SEE SHEET CG113 FOR CONTINUATION

MATCH LINE - SEE SHEET CG109 FOR CONTINUATION

MATCH LINE - SEE SHEET CG107 FOR CONTINUATION

1

2

3

4

5

6

E

D

C

B

A

1

2

3

4

5

6