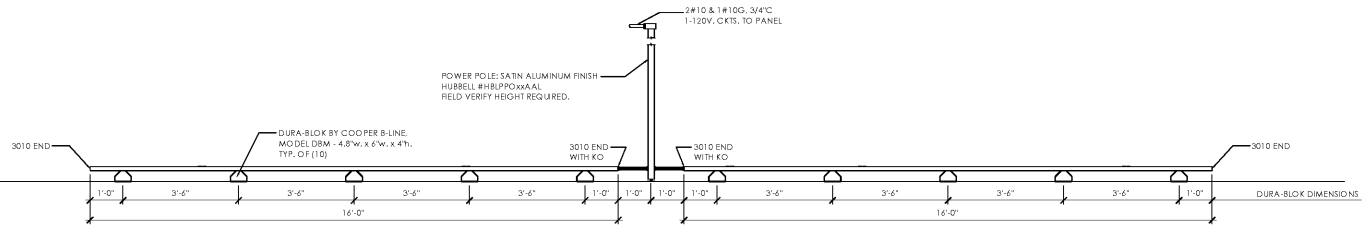
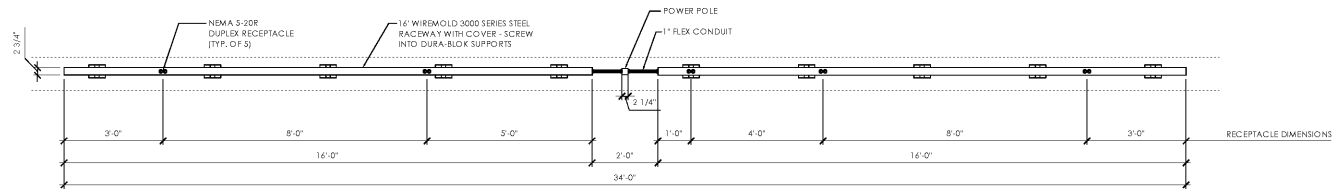
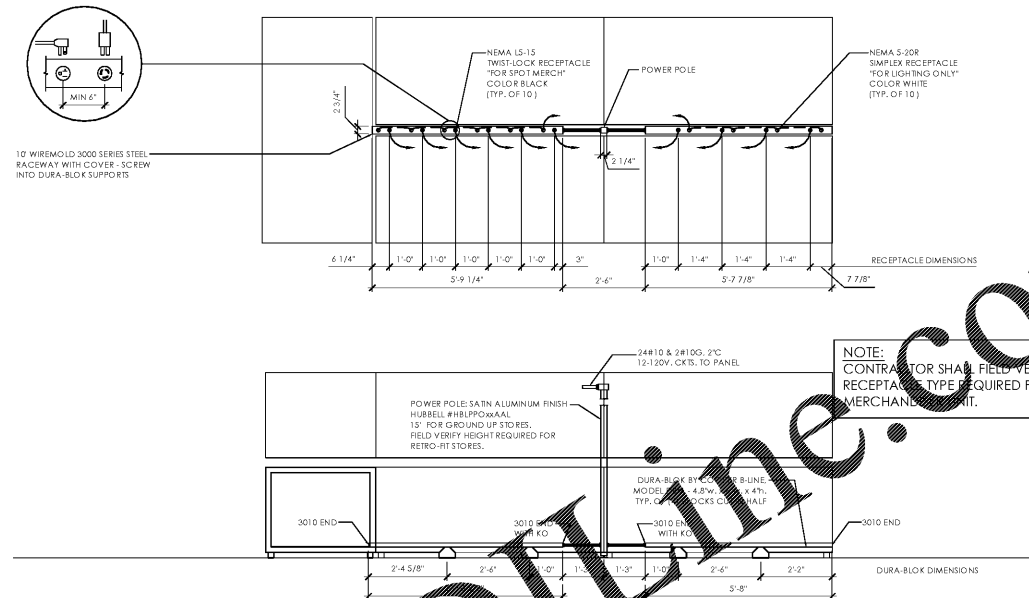


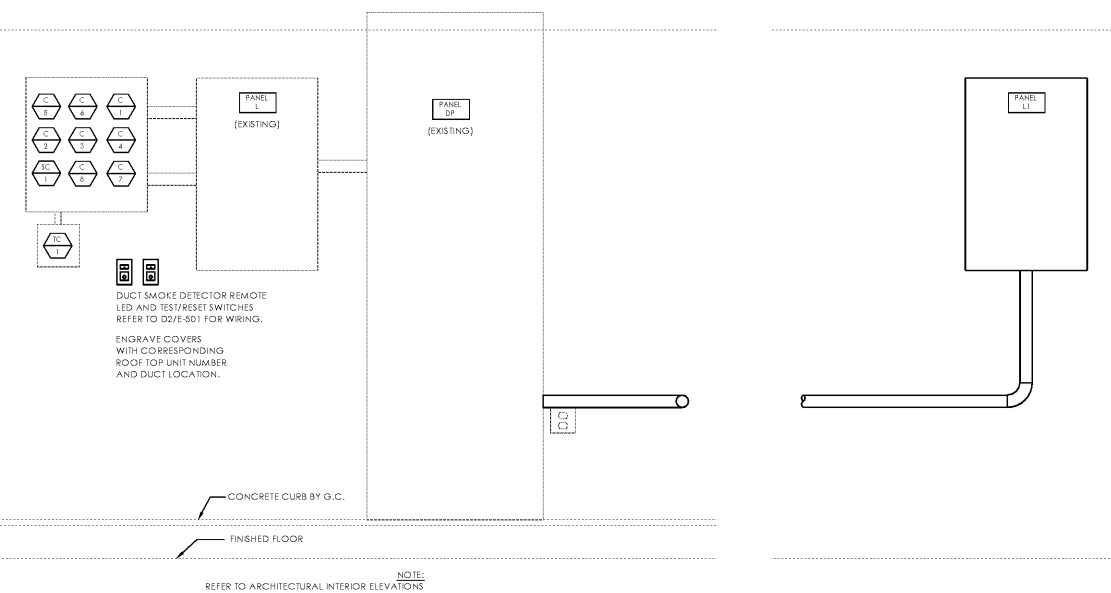
File Name: N:\D062\40452\30 - CHARLOTTE, NC\DCCS\CAD\E502.DWG Author: TOMLE, BRENDON Plot Date: 2/12/2021



D3 Gondola Lighting Raceway Detail
SCALE: N.T.S.



A1 Spot Merchandiser Raceway Detail
SCALE: N.T.S.



A1 Back Room Elevation
SCALE: N.T.S.

Order Plans @ WWW.IDIline.com

Issued:	Date:
A Client Review Set	01/21/21
B Permit Set	02/03/21
C Bid Set	02/12/21
D	

Revisions:	Date:
1	
2	
3	
4	
5	
6	
7	
8	
9	

DO NOT SCALE PLANS
Copying, Printing, Software and other processes required to produce these prints can stretch or shrink the actual paper or layout. Therefore, scaling of this drawing may be inaccurate. Contact ms consultants with any need for additional dimensions or clarifications.

ms consultants, inc.
engineers, architects, planners
5444 Wade Park Blvd.
Suite 160
Raleigh, NC 27607-4299
phone 919.772.5565
fax 919.779.2308

DRAWN BY: RWN
REVIEWED BY: KFF
Seal ENGINEER FIRM LICENSE #C-3239

PROFESSIONAL OF RECORD:
JASON E. CHRISTOFF No. 6201061051
EXP. DATE: 10/31/2020

ALDI Inc.
1985 Old Union Church Road
Salisbury, NC 28146
(704) 642-0073
(704) 642-0078 fax

ALDI Inc.
Store No. 87
2526 Freedom Dr
Charlotte, NC 28208
Mecklenburg County
Project Name & Location:

Electrical Details	
Drawing Name:	
Prototype Rls. 06/03/20	Project No. 40452-30
Type 100x154 FMR	E-502
Scale: As Noted	Drawing No.

D C B A