

SPRINKLER HEAD SCHEDULE

SYMBOL	DESCRIPTION	ORIFICE SIZE	"K" VALUE	TEMP. ° F.	FINISH	NOTES
⊘ _A	PENDENT - TYCO TY-FRB (TY3231), OR APPROVED EQUAL	1/2"	5.60	155	WHITE	1,2,3,6
⊘ _A	UPRIGHT - TYCO TY-FRB (TY3131), OR APPROVED EQUAL	1/2"	5.60	155	CHROME	1,6
⊘ _B	UPRIGHT - TYCO TY-FRB (TY3131), OR APPROVED EQUAL	1/2"	5.60	200	CHROME	1,6
⊘ _C	CONCEALED PENDENT - TYCO RFI (TY3531), OR EQUAL	1/2"	5.60	155	MATCH CLG	1,3,5,6
⊘ _{OP-A}	CONCEALED DRY PENDANT - VICTAULIC AB6 (V3301), OR EQUAL	1/2"	5.60	155	CHROME	1,4,6

- NOTES:**
 1. STANDARD RESPONSE
 2. PROVIDE RECESSED ESCUTCHEON (FINISH: WHITE)
 3. PROVIDE 1" STAINLESS STEEL CORRUGATED FLEXIBLE TUBING TO PENDENT SPRINKLER HEAD ABOVE CEILINGS.
 4. PROVIDE SPRINKLER HEAD GUARD.
 5. COVER PLATE SHALL MATCH SURROUNDING CEILING COLOR.
 6. FIRE SUPPRESSION SHOP DRAWINGS FOR BE REVIEWED BY ARCHITECT AND ENGINEER PRIOR TO INSTALLATION.

FIRE PROTECTION LEGEND

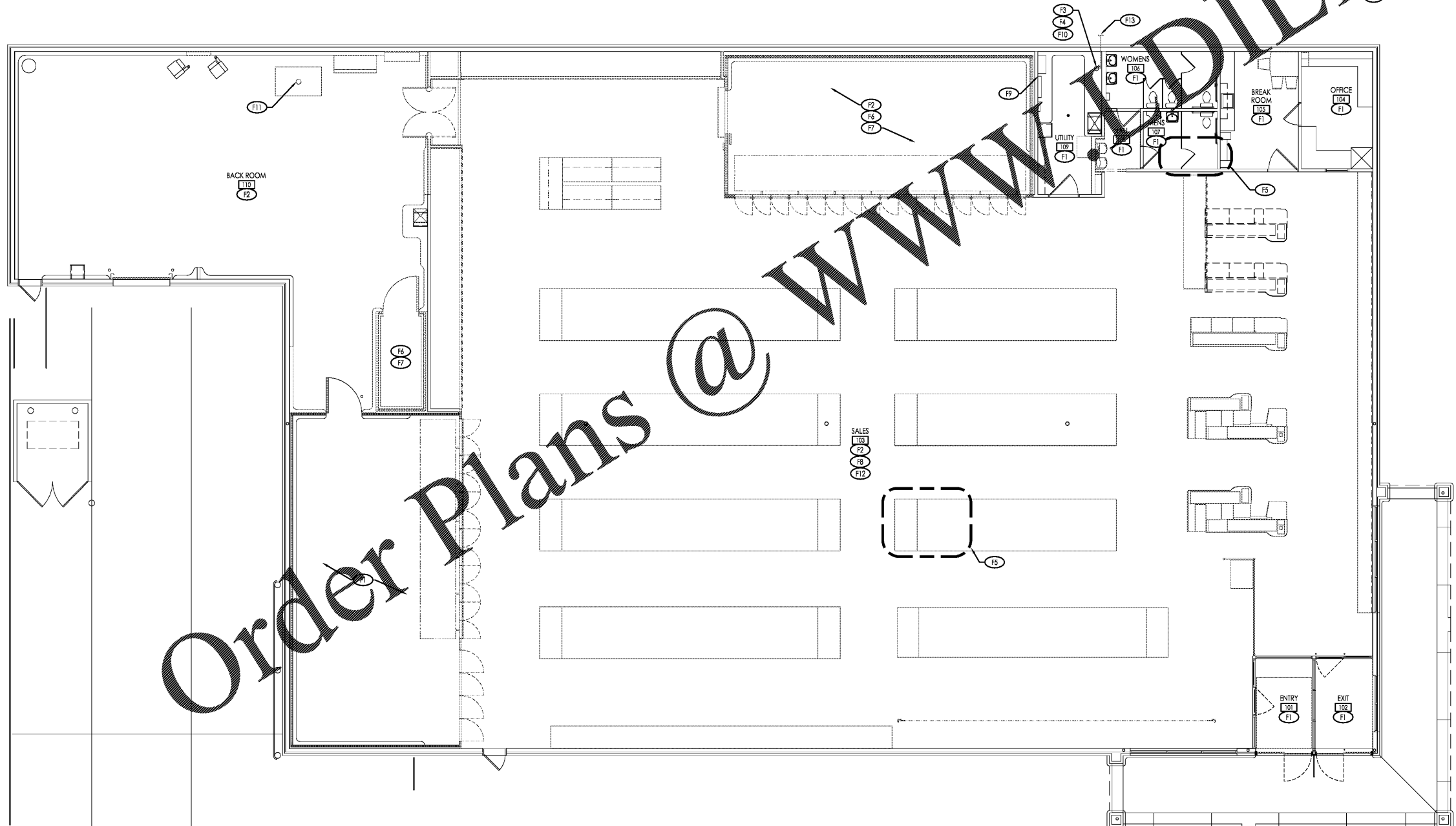
SYMBOL	ABBREV	ITEM	SYMBOL	ABBREV	ITEM
—	FP	FIRE PROTECTION MAIN	↘		REDUCER
⊘ _A		SPRINKLER HEAD - RECESSED PENDANT	⊘		CHECK VALVE
⊘ _A		SPRINKLER HEAD - UPRIGHT	⊘		FLOW SWITCH
⊘ _{OP-A}		SPRINKLER HEAD - DRY PENDENT	⊘		TAMPER SWITCH
⊘		FIRE RISER WITH VALVING	⊘		TEE - UP
			⊘		TEE - DOWN
			⊘		TEE
			⊘		ELBOW - UP
			⊘		ELBOW DOWN
			⊘		ELBOW

GENERAL FIRE PROTECTION NOTES:

- PROVIDE ALL WORK IN COMPLIANCE WITH ALL LOCAL, STATE AND FEDERAL CODES. COORDINATE ALL WORK WITH LOCAL FIRE MARSHAL.
- SPRINKLER CONTRACTOR SHALL OBTAIN AND PAY FOR ALL STATE AND LOCAL PERMITS REQUIRED FOR HIS WORK, AND SCHEDULE ANY INSPECTIONS REQUIRED BY GOVERNING RULES AND REGULATIONS.
- PROVIDE FULL SPRINKLER COVERAGE FOR ALL SPACES IN COMPLIANCE WITH LOCAL, STATE AND FEDERAL CODES, NFPA-13 AND OWNER'S INSURANCE CARRIER/UNDERWRITER.
- COORDINATE FIRE PROTECTION SYSTEM WITH ALL OTHER TRADES, BUILDING CONDITIONS, ETC.
- ALL PIPING SHALL BE PITCHED BACK TO MAIN WITH SPRINKLER HEADS AS HIGH AS POSSIBLE IN SPACES WITH NO CEILINGS (EXPOSED ROOF STRUCTURE).
- FIRE PROTECTION CONTRACTOR SHALL PROVIDE DRY PIPE PENDANT HEADS WITH HEAD GUARDS IN THE FREEZER AND COOLERS. FREEZER AND COOLER INSTALLER SHALL BE RESPONSIBLE FOR SEALING THE SPRINKLER HEAD PENETRATION INTO THE INSULATED BOX.
- POSITION HEADS TO MISS LIGHT FIXTURES IN COOLER AND FREEZER AND TO BE LOCATED NO CLOSER THAN 24" TO REFRIGERATION COILS HUNG FROM CEILING OF COOLER/ FREEZER OR NO CLOSER THAN 48" TO THE BACK WALL OF THE COOLER/FREEZER. (COORDINATE WITH REFRIGERATION CONTRACTOR).
- FOR ALL AREAS WITH CEILING GRIDS, PROVIDE SPRINKLERS IN THE CENTER OR QUARTER OF CEILING TILES AND SHALL BE WHITE FINISH. REFER TO ARCHITECTURAL PLAN FOR CEILING GRID LAYOUT.
- THE SPRINKLER/ FIRE PROTECTION CONTRACTOR SHALL HYDRAULICALLY CALCULATE COMPLETE SPRINKLER SYSTEM.**
- PROVIDE (2) EXTRA HEADS FOR EACH TYPE OF SPRINKLER HEAD AND TEMPERATURE AND ASSOCIATED WRENCHES FOR EACH HEAD STYLE FOR SPARES. PROVIDE SURFACE MOUNTED SPRINKLER HEAD/WRENCH CABINET FOR SPARE HEADS AND WRENCHES. MOUNT HEAD CABINET WITHIN UTILITY ROOM, ADJACENT TO FIRE RISER. CABINET SHALL BE EASILY ACCESSIBLE.
- FIRE PROTECTION CONTRACTOR SHALL TEST AND FLUSH PIPING.
- NOTE THAT SPRINKLER HEADS SHOWN ARE FOR REFERENCE ONLY AND THE FIRE PROTECTION CONTRACTOR SHALL DESIGN THE ENTIRE FIRE PROTECTION SYSTEM PER NFPA-13, INCLUDING ALL HEAD LOCATIONS, BRANCH PIPING, MAIN RUNS AND ASSOCIATED PIPE SIZES. HEAD LOCATIONS BY FIRE PROTECTION CONTRACTOR'S DESIGN MAY BE DIFFERENT THAN SHOWN HEREIN.
- ALL PIPING SHALL BE ROUTED AROUND ELECTRICAL AREAS WHERE POSSIBLE. IF ANY PIPING IS OVER THE AREA, DRIP PAN SHALL BE INSTALLED UNDER THE ENTIRE LENGTH OF EACH PIPE OVER THE SENSITIVE AREA OVER THE ROOM, CHANNELING WATER AWAY SO AS TO PREVENT ANY LEAKS IN THE AREA. AT THE LOWER SEGMENT OF DRIP PAN, ROUTE DRAIN TO NEAREST APPROVED RECEPTACLE WITH AN APPROVED AIR GAP PER CODE. CONTRACTOR SHALL REVIEW ALL DRAWING PRIOR TO CONSTRUCTION, AND REPORT IF THIS CONDITION EXISTS.
- ALL WATER PIPING SHALL BE ROUTED AWAY FROM ELECTRICAL EQUIPMENT WHENEVER POSSIBLE. REFER TO FP-20 FOR GENERAL NOTES FOR ROUTING INFORMATION.

FIRE PROTECTION PLAN KEYNOTES:

- (F1) EXISTING FIRE SUPPRESSION TO REMAIN. NO WORK IN THIS AREA UNLESS OTHERWISE NOTED.
- (F2) MODIFY SPRINKLER HEADS AS REQUIRED TO PROVIDE ADEQUATE COVERAGE IN THIS AREA.
- (F3) EXISTING FIRE SUPPRESSION SERVICE ENTRANCE AND RISER. INSPECT AND CLEAN EQUIPMENT AS REQUIRED.
- (F4) IF A SHUTDOWN OF SPRINKLER EQUIPMENT IS REQUIRED PRIOR TO CEASING DAILY STORE OPERATIONS, THE FIRE PROTECTION CONTRACTOR SHALL BE RESPONSIBLE FOR PROVIDING A FIRE WATCH. COORDINATE ALL SHUT DOWNS WITH ALDI CONSTRUCTION MANAGER.
- (F5) COORDINATE LOCATION OF SPRINKLER HEADS WITH RTU DUCT DROPS AND ASSOCIATED DUCTWORK AS REQUIRED TO MAINTAIN CODE REQUIRED FIRE PROTECTION COVERAGE.
- (F6) MODIFY EXISTING SYSTEM TO PROVIDE CONCEALED DRY-PIPE HEADS (FOR WET-PIPE SYSTEMS) AND LOCATE WITHIN COOLER AND FREEZER UNITS PER NFPA-13. PROVIDE UPRIGHT WET-PIPE HEADS ABOVE LIGHT FIXTURES.
- (F7) PRIOR TO SPRINKLER ROUGH-IN, COORDINATE LOCATION OF DRY PIPE HEADS WITH REFRIGERATION CONTRACTOR. ANY DRY PIPE HEAD THAT FALLS WITHIN 48" OF EVAPORATOR SHALL BE A HIGH TEMPERATURE HEAD.
- (F8) EXISTING FIRE PROTECTION LINES IN THIS AREA TO REMAIN. EXISTING SPRINKLER HEADS TO BE MODIFIED TO RISE HEADS. VERIFY EXACT REQUIREMENTS IN FIELD.
- (F9) DO NOT ROUTE ANY FIRE PROTECTION PIPING OVER ELECTRICAL GEAR. COORDINATE NEARBY WORK WITH E.C..
- (F10) VERIFY EXISTING FLOW AND TAMPER SWITCH IS OPERATIONAL AND REPLACE IF REQUIRED.
- (F11) COORDINATE LOCATION OF SPRINKLER MAIN TO CLEAR BALER RAM.
- (F12) EXISTING SPRINKLER PIPING IN SALES FLOOR TO BE RAISED TO ABOVE BOTTOM BOARD OF BEAMS AND ROOF JOIST. REFER TO STRUCTURAL PLANS FOR ROUTING PIPING THROUGH BEAMS AND COORDINATE EXACT REQUIREMENTS IN FIELD WITH ALDI CM.
- (F13) EXISTING 4" FIRE PROTECTION LINE TO REMOTE FDC.



Building Sprinkler Information
 OWNER: ALDI, Inc.
 1985 Old Union Church Road
 Salisbury, NC 28146
 LOCATION: ALDI - Inc.
 2526 Freedom Drive
 Charlotte, NC 28208
 OCCUPANCY: Mercantile
 HAZARD: Store - Ordinary Hazard
 CLASSIFICATION: Group 2

Sprinkler System Information
 SPRINKLER SYSTEM TYPE: Wet-Pipe
 MAX AREA/ SPRINKLER: 130 SQ.FT.
 FLOW DENSITY: 0.2 GPM/SQ.FT.
 AREA OF COVERAGE: 1,500 SQ.FT.
 INSIDE HOSE DEMAND: N/A
 OUTSIDE HOSE DEMAND: 250 GPM

Water Supply Information:
 HYDRANT FLOW TEST DATA FOR HYDRAULIC CALCULATIONS IS IN PROGRESS AND WILL BE SUBMITTED ONCE COMPLETE.

Issued:	Date:
A Client Review Set	01/21/21
B Permit Set	02/03/21
C Bid Set	02/12/21
D	

Revisions:	Date:
1	
2	
3	
4	
5	
6	
7	
8	
9	

DO NOT SCALE PLANS
 Copying, Printing, Software and other processes required to produce these prints can stretch or shrink the actual paper or layout. Therefore, scaling of this drawing may be inaccurate. Contact ms consultants with any need for additional dimensions or clarifications.

ms consultants, inc.
 engineers, architects, planners
 5444 Wade Park Blvd.
 Suite 160
 Raleigh, NC 27607-4299
 phone 919.772.5565
 fax 919.779.2308

DRAWN BY: RWN
 REVIEWED BY: KFF

Seal ENGINEER FIRM LICENSE #C-3239

PROFESSIONAL OF RECORD:
 JASON E. CHRISTOFF No. 6201061051
 EXP. DATE: 10/31/2020

ALDI Inc.
 1985 Old Union Church Road
 Salisbury, NC 28146
 (704) 642-0073
 (704) 642-0078 fax

ALDI Inc.
 Store No. 87
 2526 Freedom Dr
 Charlotte, NC 28208
 Mecklenburg County
 Project Name & Location:

Fire Protection Floor Plan	
Drawing Name:	
Prototype Rls. 06/03/20	Project No. 40452-30
Type 100x154 FMR	
	FP-101
Scale: As Noted	Drawing No.