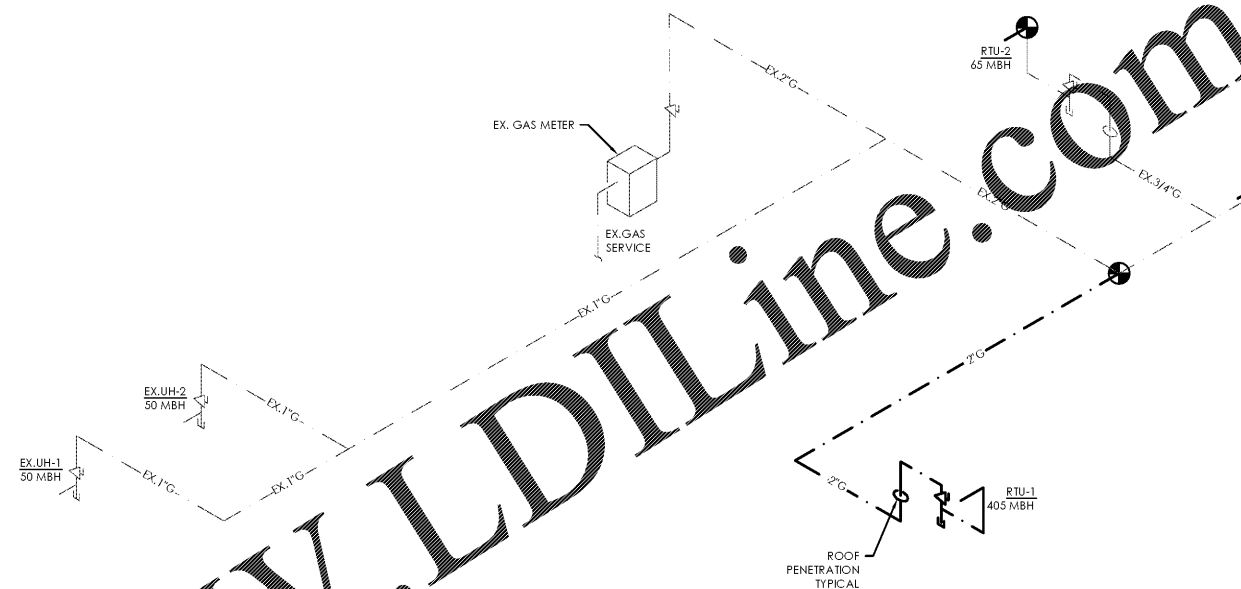
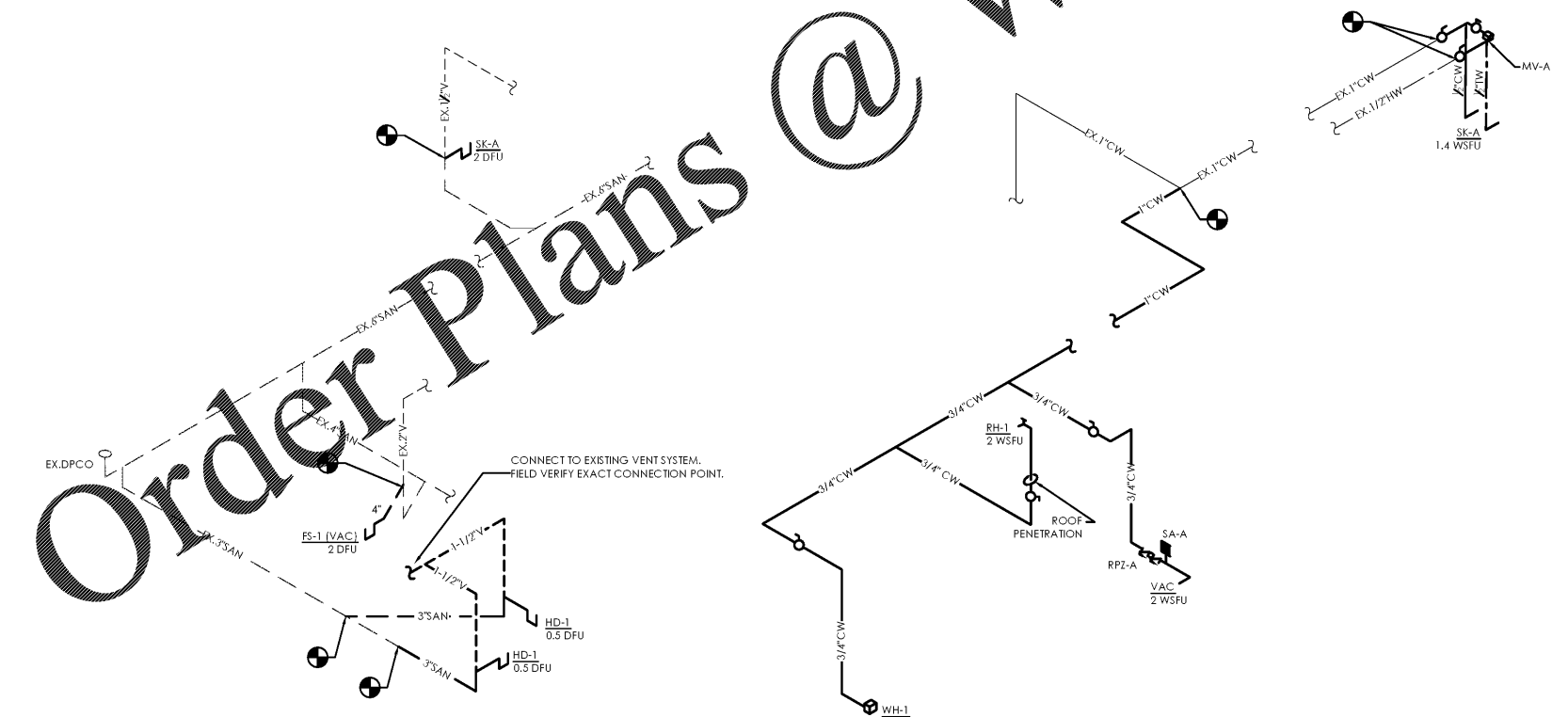


File Name: N:\D062\40452\30 - CHARLOTTE, NC\DCCS\CAD\301.DWG Author: TOMLE, BRENDON Plot Date: 2/12/2021

GAS PIPE SIZING CALCULATIONS			
REFERENCE TABLE	IFGC 402.4(2)		
INLET PRESSURE	LESS THAN 2 PSI		
PRESSURE DROP	0.5 IN. W.C.		
SPEC. GRAVITY	0.60		
LONGEST RUN	~150'		
TOTAL LOAD	570		
EQUIPMENT	TAG	LOAD (MBH)	PIPE SIZE
ROOFTOP UNIT	RTU-1	405	2"
ROOFTOP UNIT	RTU-2	65	3/4"
EX. UNIT HEATER	EX.UH-1	50	1"
EX. UNIT HEATER	EX.UH-2	50	1"
EX. MAIN	-	570	2"



Gas Isometric Diagram
 GAS ISOMETRIC NOTE:
 1. SIZING BASED ON LONGEST LENGTH METHOD; TO EX.UH-1 AT 150 FEET USING 2015 IFGC TABLE 402.4(2) USING 200FT.



Back Room
 Partial Domestic Water and Sanitary Isometric Diagrams
 D1 NO SCALE

Issued:		Date:
A	Client Review Set	01/21/21
B	Permit Set	02/03/21
C	Bid Set	02/12/21
D		

Revisions:		Date:
1		
2		
3		
4		
5		
6		
7		
8		
9		

DO NOT SCALE PLANS
 Copying, Printing, Software and other processes required to produce these prints can stretch or shrink the actual paper or layout. Therefore, scaling of this drawing may be inaccurate. Contact ms consultants with any need for additional dimensions or clarifications.

ms consultants, inc.
 engineers, architects, planners
 5444 Wade Park Blvd.
 Suite 160
 Raleigh, NC 27607-4299
 phone 919.772.5565
 fax 919.779.2308

DRAWN BY: RWN
 REVIEWED BY: KFF

Seal ENGINEER FIRM LICENSE #C-3239

PROFESSIONAL OF RECORD:
 JASON E. CHRISTOFF No. 6201061051
 EXP. DATE: 10/31/2020

ALDI Inc.
 1985 Old Union Church Road
 Salisbury, NC 28146
 (704) 642-0023
 (704) 642-0078 fax

ALDI Inc.
 Store No. 87
 2526 Freedom Dr
 Charlotte, NC 28208
 Mecklenburg County
 Project Name & Location:

Isometric Diagrams	
Drawing Name:	
Prototype Rls. 06/03/20	Project No. 40452-30
Type 100x154 FMR	
	P-301
Scale: As Noted	Drawing No.

D C B A