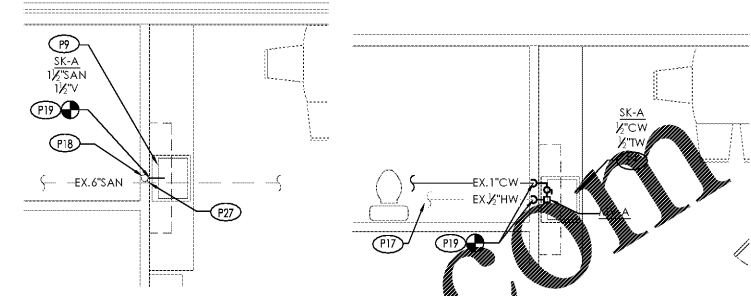


**PLUMBING GENERAL NOTES:**

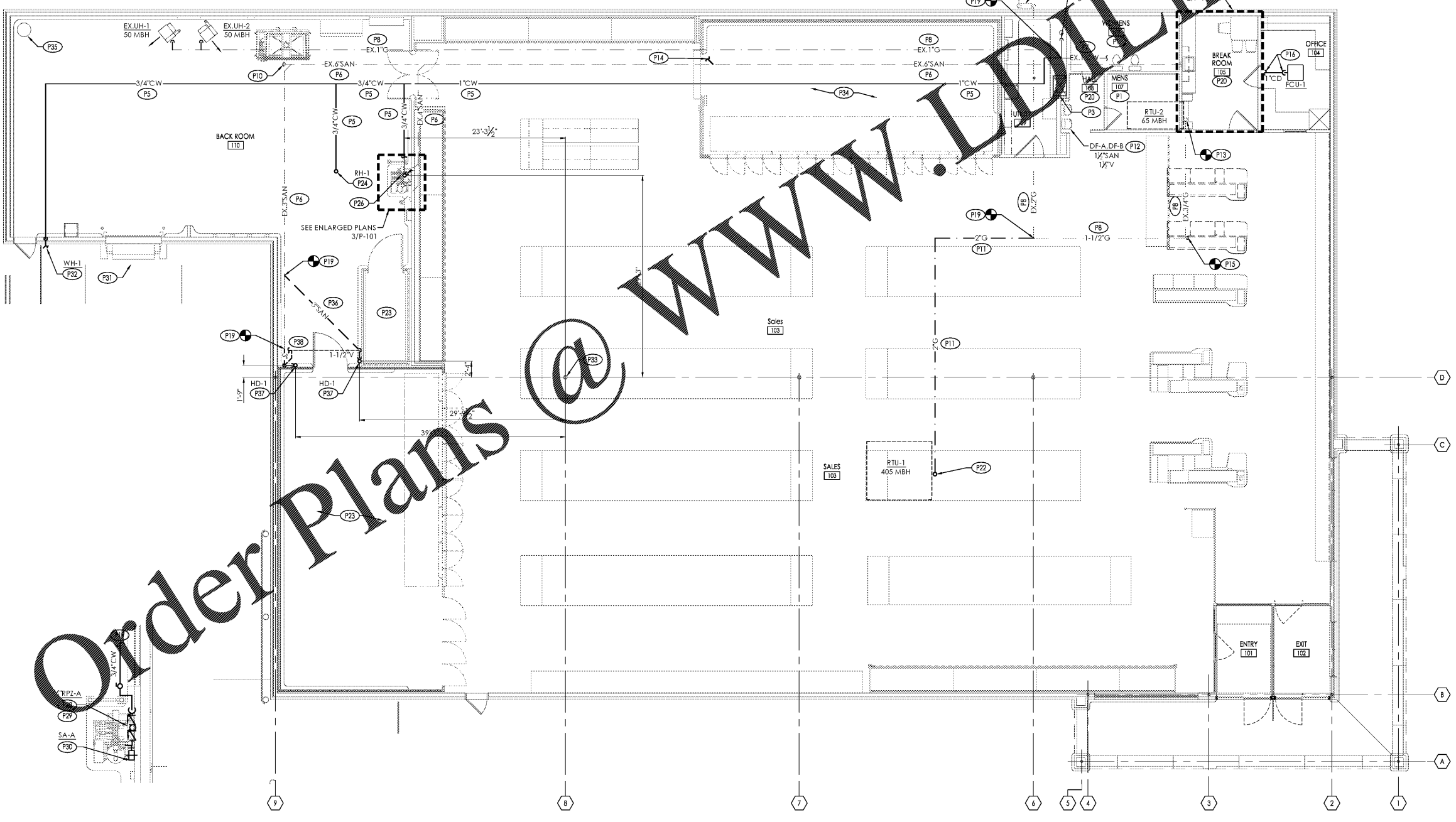
REFER TO P-501 FOR GENERAL NOTES

**PLUMBING PLAN KEYNOTES:**

- (P1) EXISTING PLUMBING FIXTURES IN THIS AREA TO REMAIN UNLESS OTHERWISE NOTED. INSPECT, CLEAN, AND REPAIR AS REQUIRED.
- (P2) EXISTING DOMESTIC WATER METER, BACKFLOW PREVENTER, AND RISER TO REMAIN. INSPECT, CLEAN, AND REPAIR AS REQUIRED.
- (P3) REPLACE EXISTING ELECTRIC WATER HEATER ABOVE MOP BASIN. REFER TO ARCHITECTURAL DRAWINGS FOR WATER HEATER SHELF. SEE DETAIL C2/P-501 FOR EWH-1 PIPING DETAIL & HW & CW PIPING SCHEMATIC DOWN TO MB-A. CONNECT TO EXISTING PIPING. FIELD VERIFY EXACT REQUIREMENTS.
- (P4) EXISTING GAS METER AND ASSOCIATED EQUIPMENT TO REMAIN. CLEAN, PAINT, OPERATE VALVES. CHECK OUTLET PRESSURE. AND INSPECT TO VERIFY THE METER IS ADEQUATELY SIZED AND OPERATING AS DESIRED. **ENSURE EXISTING GAS REGULATOR SET TO 10" W.C.. MINIMUM INLET PRESSURE REQUIRED AT RTU'S IS 7" W.C.. CONFIRM EXISTING OUTLET PRESSURE AT METER. COORDINATE WITH UTILITY COMPANY TO ENSURE AN OUTLET PRESSURE OF 10" W.C.. IF 10" W.C. IS NOT AVAILABLE, CONTACT ARCHITECT/ENGINEER.**
- (P5) PROVIDE DOMESTIC COLD WATER PIPING.
- (P6) EXISTING SANITARY LINE. FIELD VERIFY LOCATION PRIOR TO WORK. SANITARY LINE TO BE INSPECTED PRIOR TO ANY NEW CONNECTIONS BEING MADE.
- (P7) EXISTING DOMESTIC WATER LINE TO REMAIN. FIELD VERIFY LOCATION PRIOR TO WORK. RAISE EXISTING PIPING ON SALES FLOOR TO ABOVE BOTTOM CHORD OF ROOF JOIST. FIELD VERIFY EXACT REQUIREMENTS AND COORDINATE WITH ALDI CM.
- (P8) EXISTING GAS PIPING TO REMAIN. FIELD VERIFY LOCATION PRIOR TO WORK. RAISE GAS PIPING TO ABOVE BOTTOM CHORD OF ROOF JOIST AS REQUIRED. COORDINATE WITH ALDI CM.
- (P9) EXISTING SINK TO BE REPLACED AS SCHEDULED. PROVIDE SINK AND PIPING CONNECTIONS. MODIFY EXISTING ROUGH-INS TO ACCOMMODATE NEW FIXTURE. PROVIDE ADDITIONAL PIPING AS NECESSARY TO MAKE FINAL CONNECTION.
- (P10) EXISTING CLEANOUT TO REMAIN.
- (P11) PROVIDE GAS PIPING. ROUTE ABOVE BOTTOM CHORD OF JOISTS.
- (P12) PROVIDE DRINKING FOUNTAIN AND PIPING CONNECTIONS.
- (P13) CONNECT EXISTING GAS PIPING TO NEW RTU. PROVIDE WITH DIRT LEG AND ISOLATION SHUTOFF VALVE. MAKE FINAL CONNECTION TO UNIT. REFER TO ISOMETRIC B2/P-301 AND DETAIL D2/P-501.
- (P14) EXISTING SANITARY BRANCH TO BE CAPPED BELOW FLOOR AT EXISTING REMOVED FIXTURE. VERIFY EXACT REQUIREMENTS IN FIELD.
- (P15) EXISTING GAS PIPING TO BE REMOVED BACK TO POINT SHOWN AND CAPPED. VERIFY EXACT REQUIREMENTS IN FIELD.
- (P16) PROVIDE 1" CONDENSATE DRAIN FROM FCU-1. ROUTE TO NEAREST DRAIN RECEPTOR AS SHOWN. SLOPE AT 1/8" PER FOOT. TERMINATE DRAIN 4" ABOVE DRAIN WITH AIR GAP PER CODE.
- (P17) CONNECT TO EXISTING HOT WATER PIPING SERVING AREA.
- (P18) CONNECT TO EXISTING VENT PIPING SERVING AREA.
- (P19) CONNECT NEW PIPING TO EXISTING PIPING AS SHOWN.
- (P20) EXISTING FIXTURES IN THIS AREA TO BE REPLACED AS SCHEDULED. MODIFY EXISTING ROUGH-INS TO ACCOMMODATE NEW FIXTURES. PROVIDE ADDITIONAL PIPING AS NECESSARY TO MAKE FINAL CONNECTION. VERIFY EXACT REQUIREMENTS IN FIELD.
- (P21) PROVIDE INDIRECT WASTE FROM VACUUM SYSTEM TO FS-1. COORDINATE WITH REFRIGERATION CONTRACTOR, G.C., AND ALDI FIELD REPRESENTATIVE SUCH THAT A CODE COMPLIANT AIR GAP IS MAINTAINED PRIOR TO ROUGH-IN.
- (P22) PROVIDE GAS PIPING TO RTU. PROVIDE WITH DIRT LEG AND ISOLATION SHUTOFF VALVE. MAKE FINAL CONNECTION TO UNIT. REFER TO ISOMETRIC B2/P-301 AND DETAIL B2/P-401.
- (P23) CONDENSATE DISCHARGE PIPING TO BE ROUTED FROM DAIRY COOLER AND MEAT COOLER TO EXISTING HUB DRAIN. PROVIDE WITH CODE COMPLIANT AIR GAP. VERIFY EXACT REQUIREMENTS IN FIELD.
- (P24) PROVIDE ROOF HYDRANT WITH 3/4" CW SUPPLY AT A MINIMUM DISTANCE OF 4'-0" FROM ROOF HATCH OPENING.
- (P25) EXISTING HUB DRAIN TO REMAIN.
- (P26) COORDINATE LOCATION OF VAC FLOOR SINK WITH REFRIGERATION CONTRACTOR, G.C., AND ALDI FIELD REPRESENTATIVE PRIOR TO ROUGH-IN.
- (P27) EXISTING VENT UP TO REMAIN. CONNECT NEW SINK SANITARY TO EXISTING VENT AND SANITARY SERVING AREA. VERIFY EXACT CONNECTION POINT IN FIELD.
- (P28) PROVIDE REDUCED PRESSURE ZONE ASSEMBLY BACKFLOW DEVICE AND 3/4" CW TO VAC. SYSTEM; P.C. SHALL MAKE ALL FINAL CONNECTIONS. MOUNT RP2-A BETWEEN 30" AND 60" AFF.
- (P29) PROVIDE RIGID WATER PIPE SUPPORT ON EACH SIDE OF PIPING CHANGING DIRECTION UPSTREAM OF VAC SYSTEM CONNECTIONS. INSTALL WATER HAMMER SHOCK ABSORBER AS CLOSE AS POSSIBLE TO QUICK-CLOSING VALVES. PROVIDE UNISTRUT SUPPORT WITH HOLDRITE 257-P SIZES UNDER 1" PIPE SIZE AND 287-P SERIES 1" UP TO 2" PIPE SIZE STRUT CLAMP WITH ACOUSTICAL PADS.
- (P30) PROVIDE WATER HAMMER SHOCK ABSORBER ABOVE UNIT SERVED. LOCATION SHOWN FOR CLARITY PURPOSES ONLY.
- (P31) EXISTING TRUCK DOCK TO BE CLEANED AND JETTED.
- (P32) PROVIDE 1/2" ANTI-FREEZE LOCKABLE BOX WALL HYDRANT. MOUNT 18" ABOVE FINISHED GRADE.
- (P33) FIELD VERIFY EXACT COLUMN LOCATION PRIOR TO BEGINNING WORK. NOTIFY ENGINEER OF ANY DISCREPANCIES.
- (P34) CONDENSATE DISCHARGE PIPING TO BE ROUTED FROM FREEZER TO EXISTING DRAINS IN UTILITY ROOM. PROVIDE WITH CODE COMPLIANT AIR GAP. DO NOT ROUTE PIPING DIRECTLY OVER ELECTRICAL EQUIPMENT.
- (P35) INSPECT EXISTING DOCK DRAIN SUMP PUMP AND CLEAN AND REPAIR AS REQUIRED TO ENSURE PROPER OPERATION.
- (P36) PROVIDE SANITARY PIPING BELOW FLOOR. ROUTE AT MINIMUM 1/8" SLOPE.
- (P37) PROVIDE 3" HUB DRAIN, HD-1, FOR COOLER CONDENSATE. COORDINATE WITH REFRIGERATION CONTRACTOR, G.C., AND ALDI FIELD REPRESENTATIVE SUCH THAT A CODE COMPLIANT AIR GAP IS MAINTAINED PRIOR TO ROUGH-IN. REFER TO DETAIL D1/P-401.
- (P38) CONNECT TO EXISTING VENT PIPING SERVING AREA.



2 Enlarged Partial Plumbing Plan  
SCALE: 1/4" = 1'-0"



3 Enlarged Partial Plumbing Plan  
SCALE: 1/4" = 1'-0"

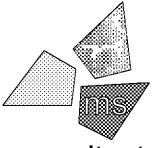
1 Plumbing Floor Plan  
SCALE: 1/8" = 1'-0"

Issued:	Date:
A Client Review Set	01/21/21
B Permit Set	02/03/21
C Bid Set	02/12/21
D	

Revisions:	Date:
1	
2	
3	
4	
5	
6	
7	
8	
9	

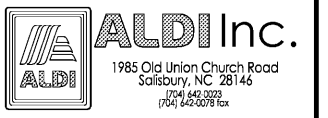
**DO NOT SCALE PLANS**  
Copying, Printing, Software and other processes required to produce these prints can stretch or shrink the actual paper or layout. Therefore, scaling of this drawing may be inaccurate. Contact us consultants with any need for additional dimensions or clarifications.



**ms consultants, inc.**  
engineers, architects, planners  
5444 Wade Park Blvd.  
Suite 160  
Raleigh, NC 27607-4299  
phone 919.772.5565  
fax 919.779.2308

DRAWN BY: RWN  
REVIEWED BY: KFF  
Seal ENGINEER FIRM LICENSE #C-3239

PROFESSIONAL OF RECORD:  
JASON E. CHRISTOFF No. 6201061051  
EXP. DATE: 10/31/2020



ALDI Inc.  
Store No. 87  
2526 Freedom Dr  
Charlotte, NC 28208  
Mecklenburg County  
Project Name & Location:

Plumbing Floor Plan Drawing Name:	
Prototype Rls. 06/03/20	Project No. 40452-30
Type 100x154 FMR	
	P-101
Scale: As Noted	Drawing No.