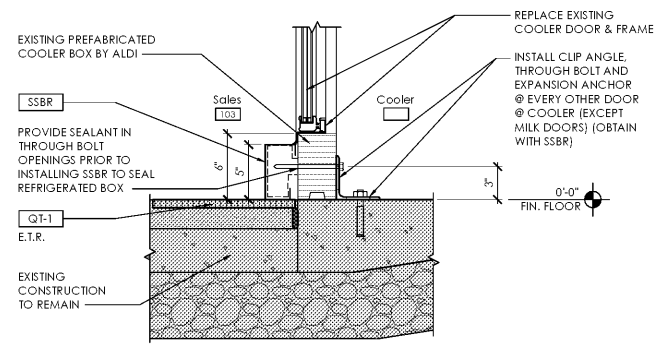
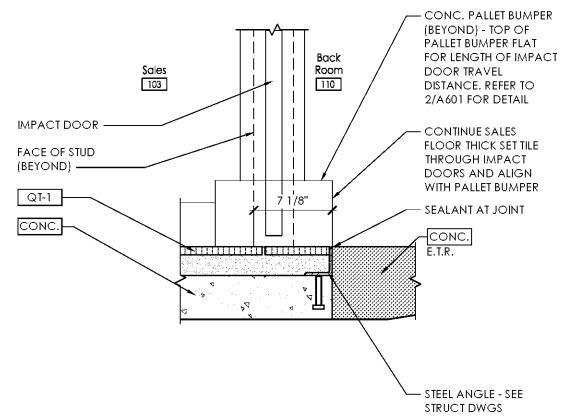


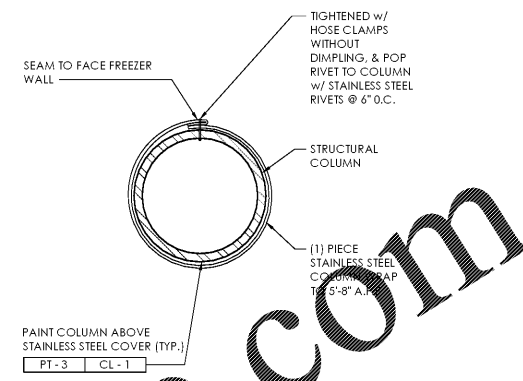
File Name: N:\D062\4046230 - CHARLOTTE, NC\DOCS\CAD\4511-4512 - INTERIOR DETAILS DWG Author: TOWLE, BRENDON Plot Date: 2/12/2021



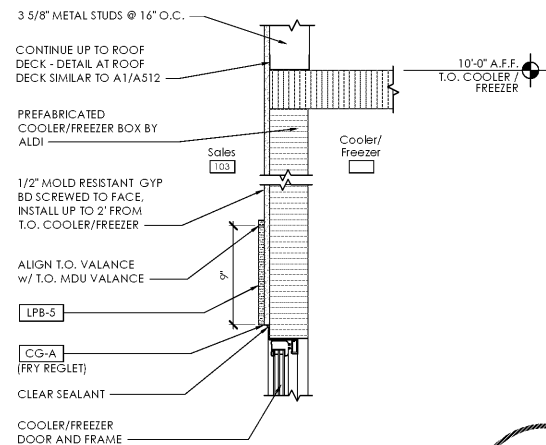
**C3** Interior Section Detail - Cooler at General Doors  
SCALE: 1 1/2" = 1'-0"



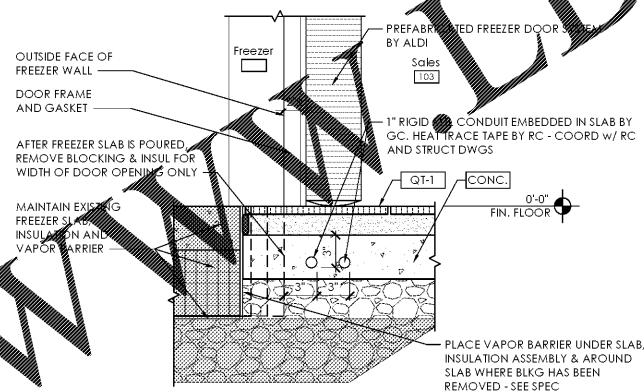
**B3** Interior Section Detail - Slab at Impact Door  
SCALE: 1 1/2" = 1'-0"



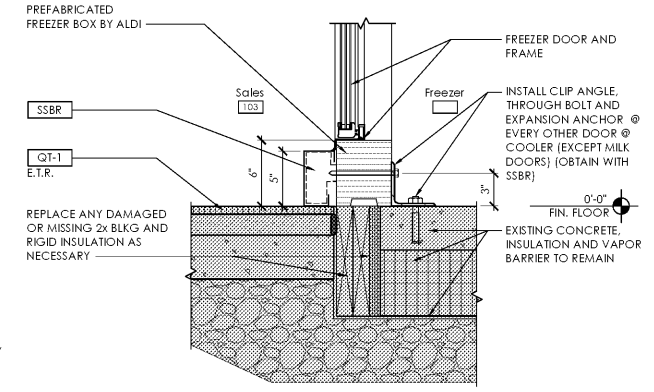
**A3** Interior Plan Detail - Sales Area Column Wrap  
SCALE: 1/2" = 1'-0"



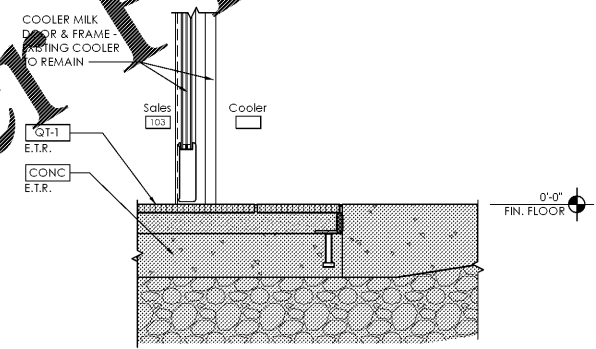
**C2** Interior Section Detail - T.O. Cooler/Freezer at Sales  
SCALE: 1 1/2" = 1'-0"



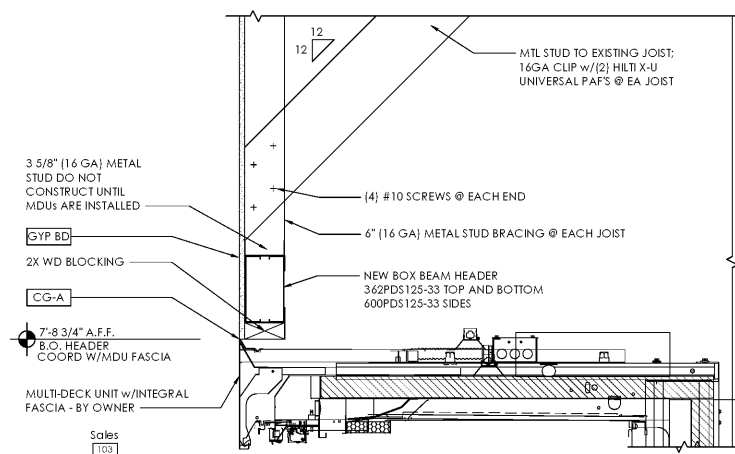
**B2** Interior Section Detail - Freezer at Service Door  
SCALE: 1 1/2" = 1'-0"



**A2** Interior Section Detail - Freezer at General Doors  
SCALE: 1 1/2" = 1'-0"



**C1** Interior Section Detail - Cooler at Milk Doors  
SCALE: 1 1/2" = 1'-0"



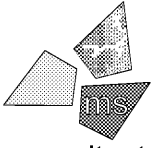
**A1** Interior Section Detail - MDU Valance  
SCALE: 1 1/2" = 1'-0"

Issued:	Date:
A Client Review Set	01/21/21
B Permit Set	02/03/21
C Bid Set	02/12/21
D	

Revisions:	Date:
1	
2	
3	
4	
5	
6	
7	
8	
9	

**DO NOT SCALE PLANS**  
Copying, Printing, Software and other processes required to produce these prints can stretch or shrink the actual paper or layout. Therefore, scaling of this drawing may be inaccurate. Contact IHS consultants with any need for additional dimensions or clarifications.

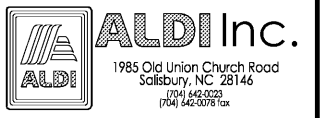


**IHS consultants, inc.**  
engineers, architects, planners  
5444 Wade Park Blvd.  
Suite160  
Raleigh, NC 27607-4299  
phone 919.772.5565  
fax 919.779.2308

DRAWN BY: SCG/MEM  
REVIEWED BY: NAL/CMB

Seal

PROFESSIONAL OF RECORD:  
CHARLES M. BUSCH No. 14751  
EXP. DATE: 06/30/2021



**ALDI Inc.**  
Store No. 87  
2526 Freedom Dr  
Charlotte, NC 28208  
Mecklenburg County  
Project Name & Location:

Interior Details	
Drawing Name:	Prototype Rls. 06/03/20
Project No.	40452-30
Type: 00x154 FMR	
	A-511
Scale: As Noted	Drawing No.

Order Plans @ WWW.LDILINE.COM

D

C

B

A

1

2

3