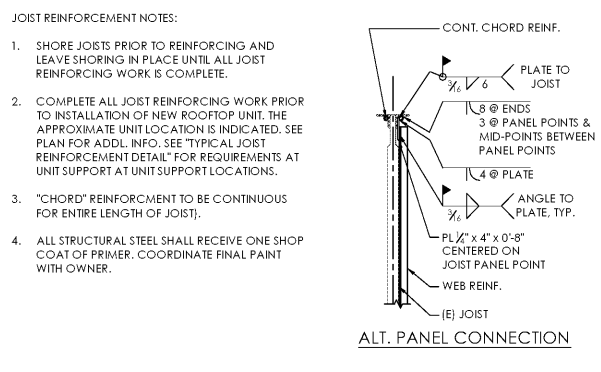
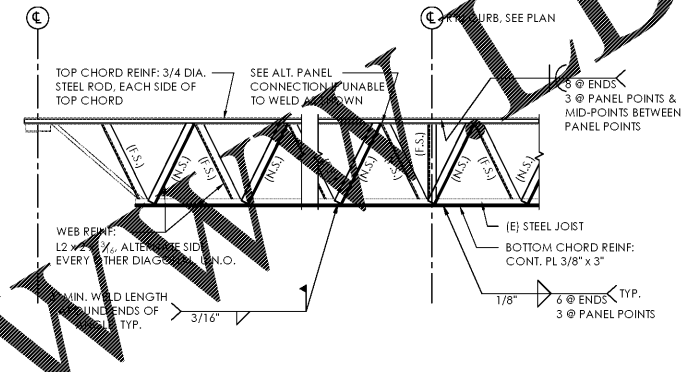
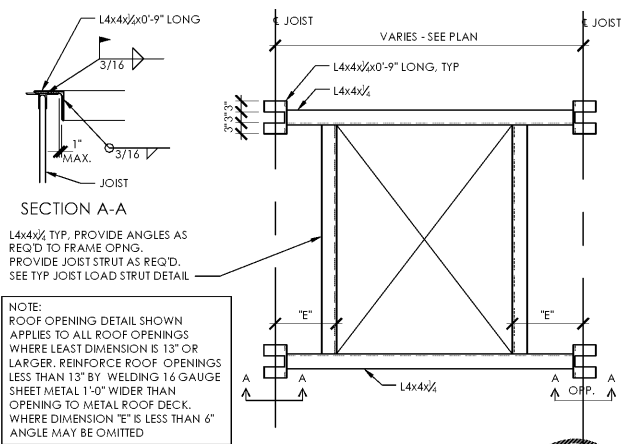
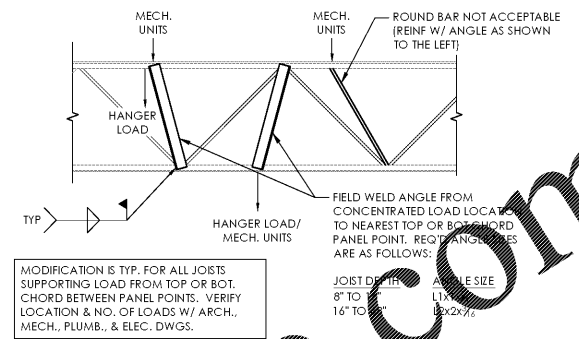
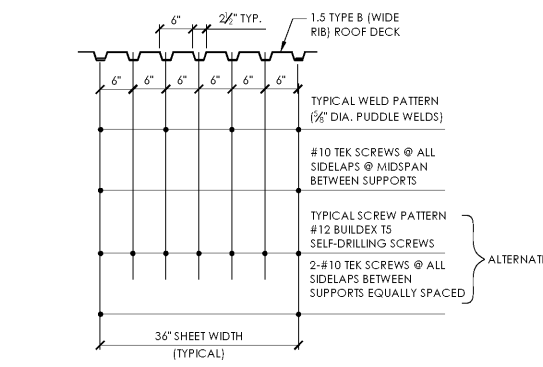
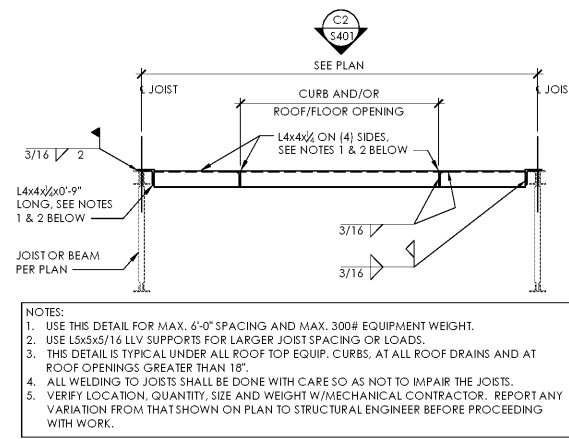


File Name: N:\D062\4045230 - CHARLOTTE, NC\DOCS\CAD\4045230 - FRAMING DETAILS.DWG Author: TOWLE, BRENDON Plot Date: 2/12/2021



- JOIST REINFORCEMENT NOTES:
1. SHORE JOISTS PRIOR TO REINFORCING AND LEAVE SHORING IN PLACE UNTIL ALL JOIST REINFORCING WORK IS COMPLETE.
 2. COMPLETE ALL JOIST REINFORCING WORK PRIOR TO INSTALLATION OF NEW ROOFTOP UNIT. THE APPROXIMATE UNIT LOCATION IS INDICATED. SEE PLAN FOR ADDL. INFO. SEE "TYPICAL JOIST REINFORCEMENT DETAIL" FOR REQUIREMENTS AT UNIT SUPPORT AT UNIT SUPPORT LOCATIONS.
 3. "CHORD" REINFORCEMENT TO BE CONTINUOUS FOR ENTIRE LENGTH OF JOIST.
 4. ALL STRUCTURAL STEEL SHALL RECEIVE ONE SHOP COAT OF PRIMER. COORDINATE FINAL PAINT WITH OWNER.

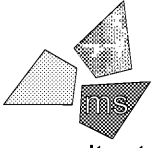
Order Plans @

Issued:		Date:	
A	Client Review Set		01/21/21
B	Permit Set		02/03/21
C	Bid Set		02/12/21
D			

Revisions:		Date:	
1			
2			
3			
4			
5			
6			
7			
8			
9			

DO NOT SCALE PLANS

Copying, Printing, Software and other processes required to produce these prints on stretch or shrink the actual paper or layout. Therefore, scaling of this drawing may be inaccurate. Contact ms consultants with any need for additional dimensions or clarifications.



ms consultants, inc.
engineers, architects, planners
5444 Wade Park Blvd.
Suite 160
Raleigh, NC 27607-4299
phone 919.772.5565
fax 919.779.2308

DRAWN BY: MLU
REVIEWED BY: DMS

Seal ENGINEER FIRM LICENSE #C-3239

PROFESSIONAL OF RECORD:
CRAIG E. METZGER No. 044723
EXP. DATE: 12/31/21



ALDI Inc.
Store No. 87
2526 Freedom Dr
Charlotte, NC 28208
Mecklenburg County
Project Name & Location:

Framing Details

Drawing Name:	
Prototype Rls. 06/03/20	Project No. 40452-30
Type 100x154 FMR	
	S-401
Scale: As Noted	Drawing No.

D

C

B

A

1

3