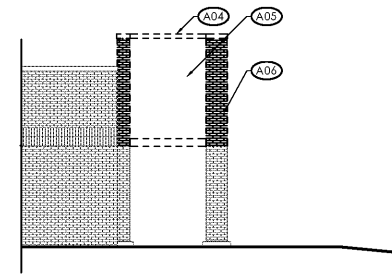


Keyed Notes:

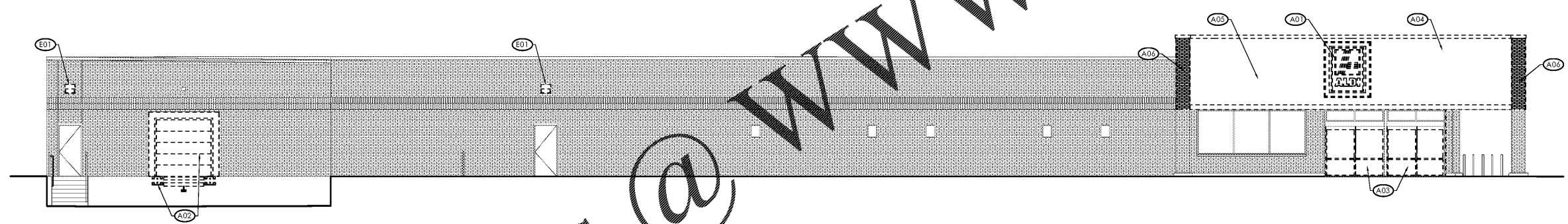
ARCHITECTURAL DEMOLITION NOTES

REFER TO GENERAL DEMOLITION NOTES ON SHEET D102 FOR ALL WORK SHOWN ON THIS DRAWING.

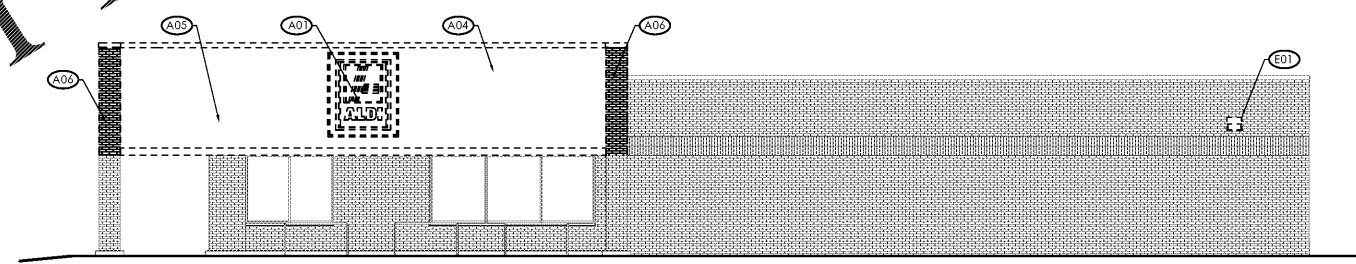
- (A01) REMOVE ALDI TOWER SIGN IN ITS ENTIRETY.
- (A02) REMOVE EXISTING DOCK DOOR, FRAME, SEALS AND BUMPER.
- (A03) REMOVE EXISTING ENTRY/EXIT DOORS, EXISTING TRANSOM TO REMAIN IF POSSIBLE. PROTECT FROM DAMAGE DURING DEMOLITION.
- (A04) REMOVE EXISTING METAL COPING
- (A05) REMOVE EXISTING E.L.F.S. AND SHEATHING DOWN TO METAL STUDS
- (A06) REMOVE EXISTING BRICK VENEER AND SHEATHING DOWN TO EXISTING METAL STUD
- (E01) REMOVE EXISTING EXTERIOR WALL PACK



3 Rear Elevation
SCALE: 1/8" = 1'-0"



2 Front Elevation
SCALE: 1/8" = 1'-0"



1 Side Elevation
SCALE: 1/8" = 1'-0"

Order Plans @

WWW.LDILine.com

Issued:	Date:
A Client Review Set	01/21/21
B Permit Set	02/03/21
C Bid Set	02/12/21
D	

Revisions:	Date:
1	
2	
3	
4	
5	
6	
7	
8	
9	

DO NOT SCALE PLANS
Copying, Printing, Software and other processes required to produce these prints on stretch or shrink the actual paper or layout. Therefore, scaling of this drawing may be inaccurate. Contact ms consultants with any need for additional dimensions or clarifications.



ms consultants, inc.
engineers, architects, planners
5444 Wade Park Blvd.
Suite 160
Raleigh, NC 27607-4299
phone 919.772.5565
fax 919.779.2308

DRAWN BY: SCG/MEM
REVIEWED BY: NAL/CMB

Seal

PROFESSIONAL OF RECORD:
CHARLES M. BUSCH No. 14751
EXP. DATE: 06/30/2021



ALDI Inc.
1985 Old Union Church Road
Salisbury, NC 28146
(704) 442-2023
(704) 642-0078 Fax

ALDI Inc.
Store No. 87
2526 Freedom Dr
Charlotte, NC 28208
Mecklenburg County
Project Name & Location:

Demolition Exterior Elevations Drawing Name:	
Prototype Rls. 06/03/20	Project No. 40452-30
Type 100x154 FMR	
	D-201
Scale: As Noted	Drawing No.