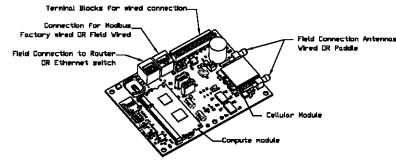


ALL DESIGNS, DRAWINGS AND SPECIFICATIONS DEPICTED ON THIS SHEET ARE THE PROPERTY OF D3 STUDIO, PLLC. ANY UNAUTHORIZED USE OR REPRODUCTION IS SUBJECT TO LEGAL PROSECUTION. POSSESSION IN ANY FORM CONSTITUTES ACCEPTANCE OF THESE CONDITIONS. COPYRIGHT 2021

ELECTRICAL PACKAGE - JOB#4663326

Table with columns: NO, TAG, PACKAGE #, LOCATION, SWITCHES, OPTION, FANS CONTROLLED. Row 1: 1, SC-3111010A, UTILITY CABINET RIGHT, CABINET RIGHT, 1 LIGHT, SMART CONTROLS THERMOSTATIC CONTROL W/ RELAY ON/OFF WITH SUPPLY, EXHAUST 3 1,000 208 3.8, SUPPLY 3 1,000 208 3.1

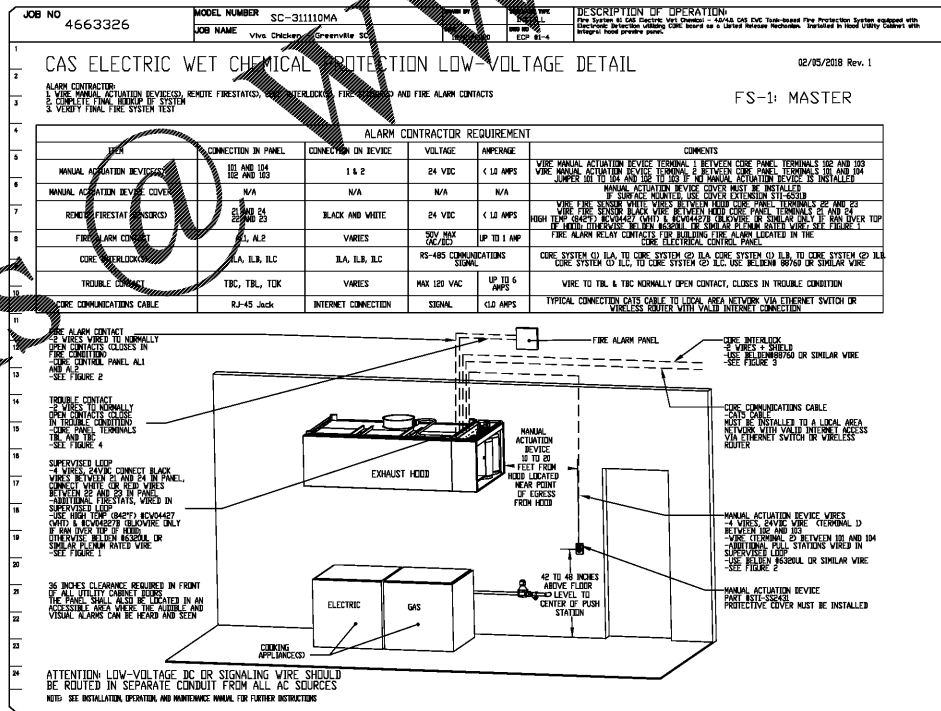
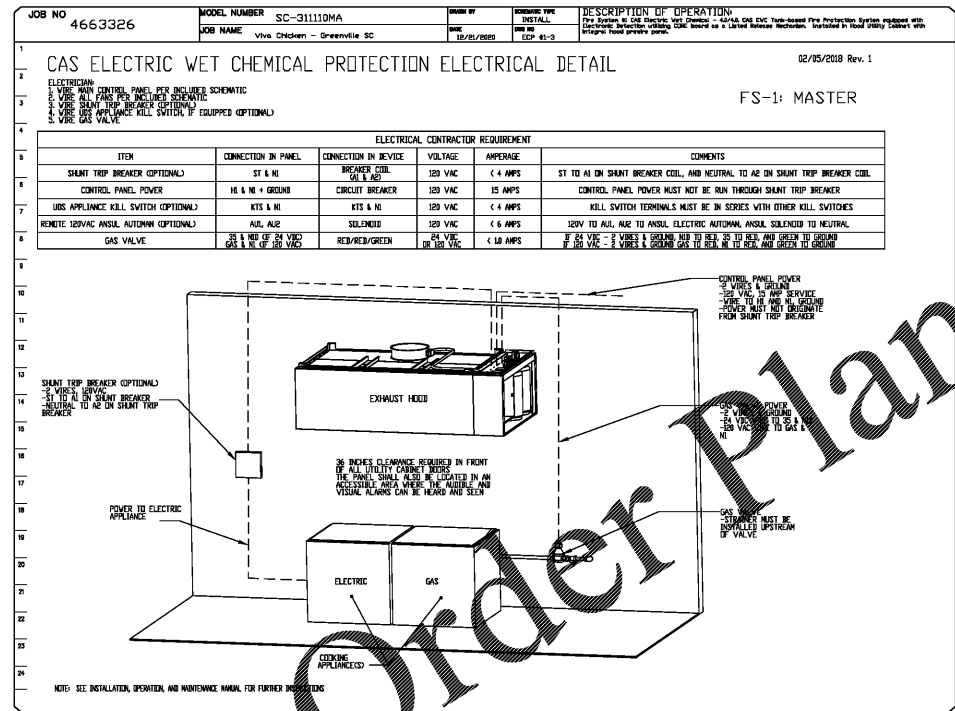
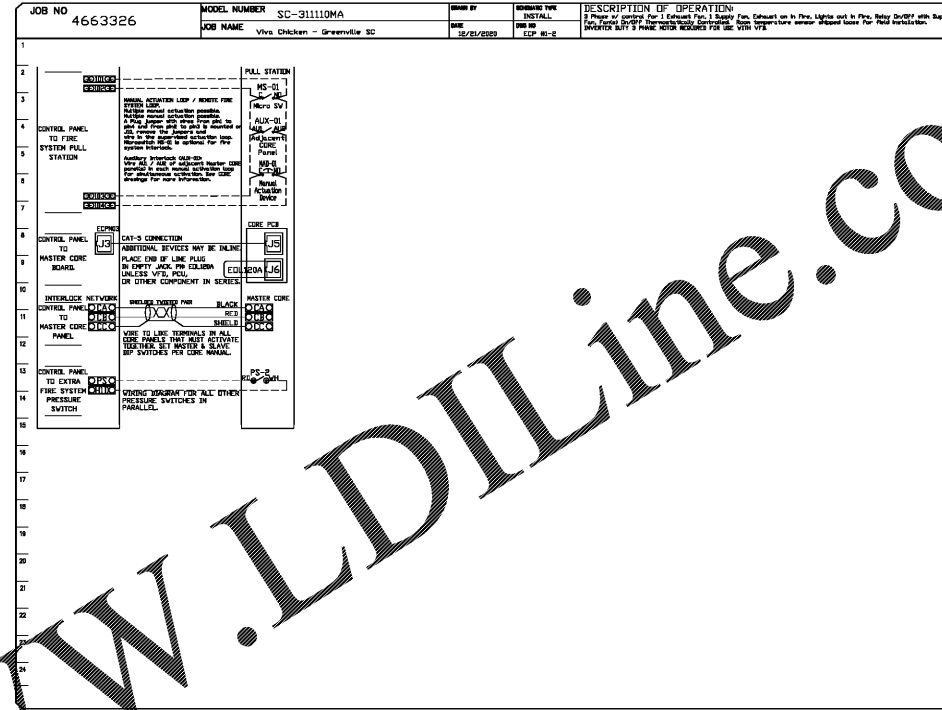
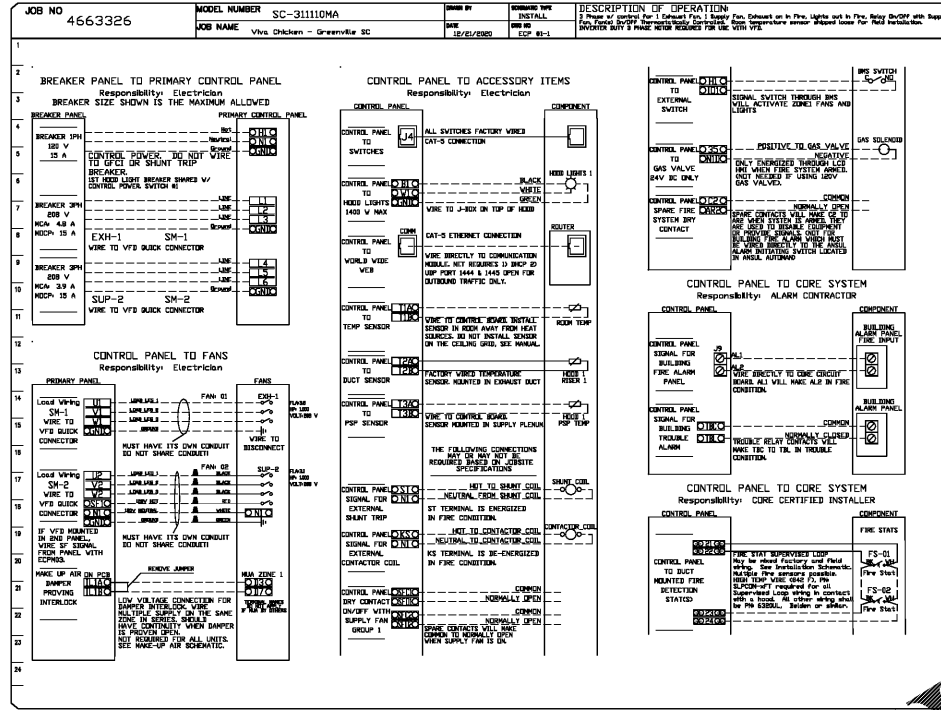


CASlink Monitor and Control

Flood control panel to support communications to cloud-based Building Management System. Flood Control Panel to allow cloud-based Building Management System to monitor real time parameters outlined on MONITOR in the points list.

MONITORING AND CONTROL POINTS LIST

Table with columns: Device Name, Function, Location, and Control Type. Lists various sensors and actuators like Room Temperature, Fan Amps, and Fan Status.



REVISIONS table with columns: NO, DESCRIPTION, DATE.

Job information: JOB NO 4663326, MODEL NUMBER SC-3111010A, JOB NAME Viva Chicken - Greenville SC. Includes contact info for CAPTIVE and Piedmont Office.

Project location: Viva Chicken - Greenville SC, GREENVILLE, SC, 29601.

Project metadata: DATE: 12/21/2020, DWG.#: 4663326, DRAWN BY: agrant, SCALE: 3/4" = 1'-0", MASTER DRAWING, SHEET NO. 4.

d3 studio logo and contact information: PLANNING + ARCHITECTURE + INTERIORS, 1318 CENTRAL AVENUE, SUITE A-10, CHARLOTTE, NC 28205, WEBSITE: WWW.D3STUDIO.COM

Professional seals for Wave Engineering and South Carolina Professional Engineer, along with project number 02.08.2021.

FOR CONSTRUCTION. Viva Chicken. PERUVIAN ROTISSERIE JOINT. 1139 WOODRUFF RD. -SUITE B, GREENVILLE, SC 29607.

REVISION table with columns: no, date, comment.

MECHANICAL HOOD DRAWINGS

M3.04