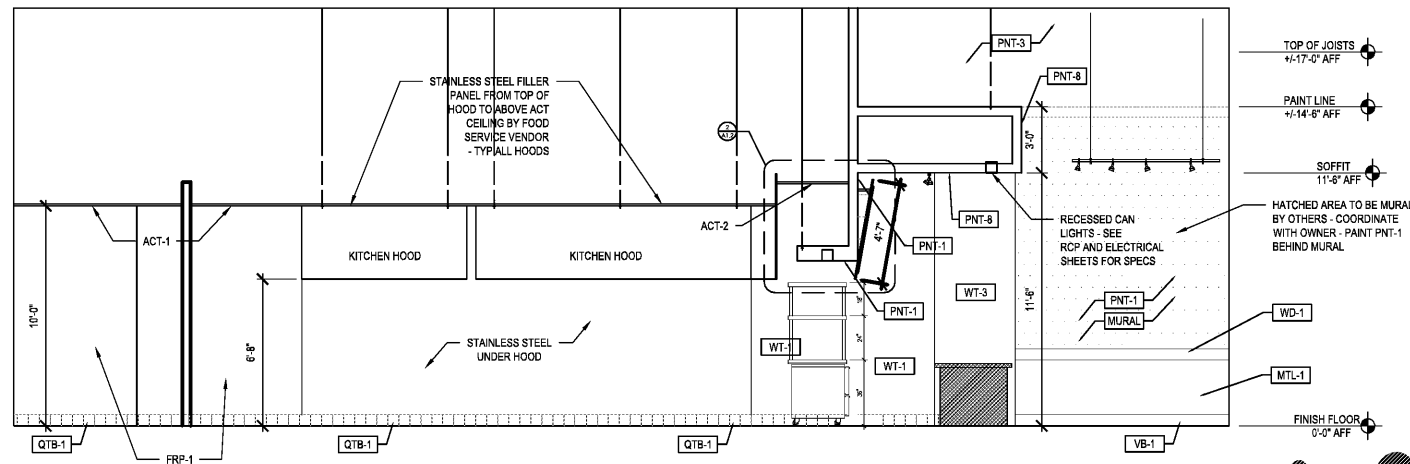
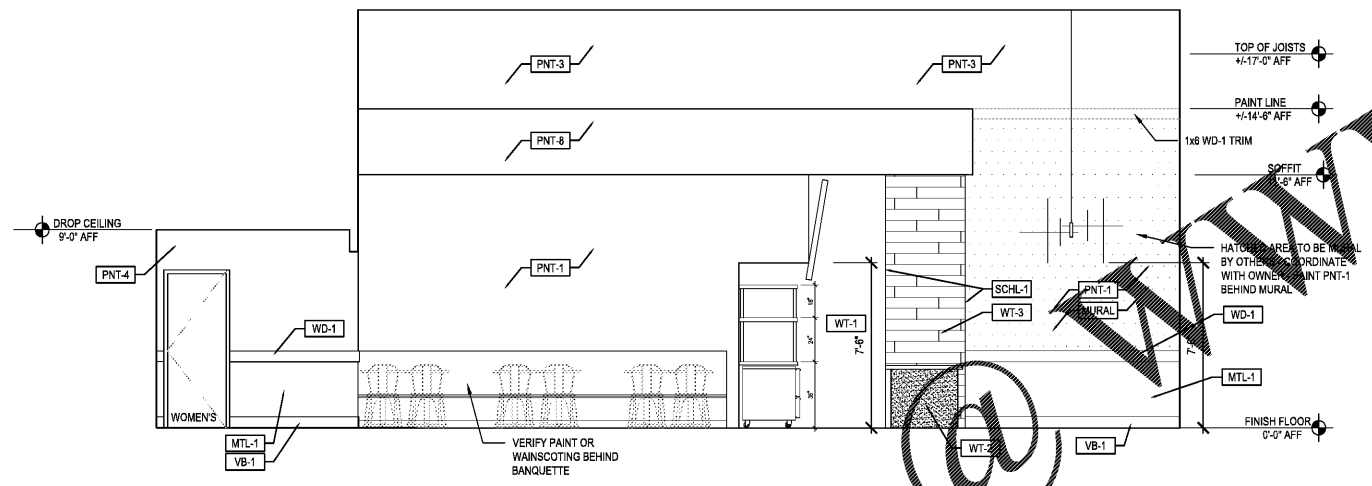


ALL DESIGNS, DRAWINGS AND SPECIFICATIONS DEPICTED ON THIS SHEET ARE THE PROPERTY OF D3 STUDIO, P.L.L.C. ANY UNAUTHORIZED USE OR REPRODUCTION IS SUBJECT TO LEGAL PROSECUTION. POSSESSION IN ANY FORM CONSTITUTES ACCEPTANCE OF THESE CONDITIONS. COPYRIGHT 2021

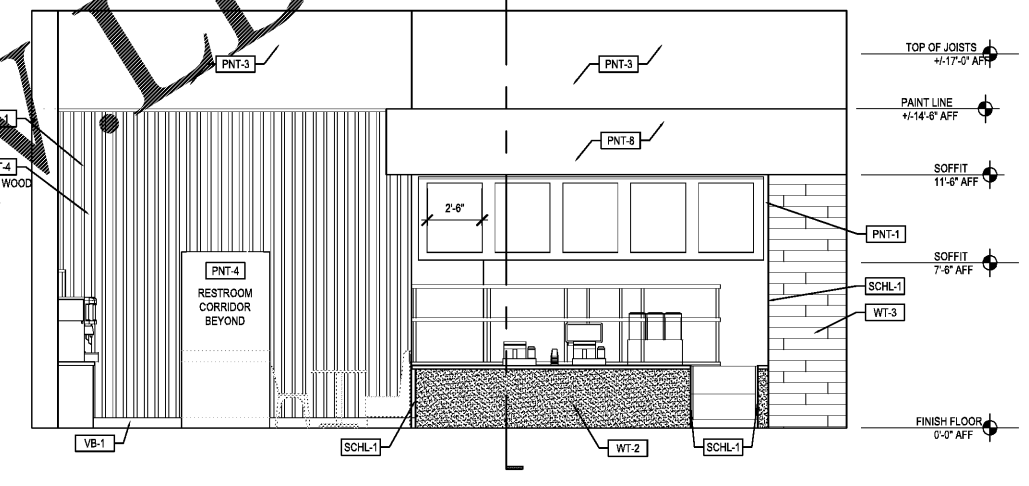


- GENERAL NOTES:**
- MILLWORK MUST COMPLY WITH THE 2018 NCSBC & 2009 ICC A117.1 ANSI. GENERAL CONTRACTOR TO CONTACT ARCHITECT IF ALTERATIONS TO CABINETRY ARE NECESSARY.
 - GENERAL CONTRACTOR TO COORDINATE NEW MILLWORK WITH TENANT & VERIFY ALL DIMENSIONS & FINISHES PRIOR TO CONSTRUCTION.
 - THE CONTRACTOR SHALL VERIFY AND COORDINATE CLEAR DIMENSIONS REQUIRED FOR EQUIPMENT PRIOR TO INSTALLATION OF OUTLETS OR FABRICATION OF MILLWORK. (REFER TO FLOOR PLANS FOR EQUIPMENT LOCATIONS).
 - GENERAL CONTRACTOR SHALL SUBMIT SHOP DRAWINGS FOR ALL MILLWORK. GENERAL CONTRACTOR SHALL REVIEW ALL SHOP DRAWINGS AND RECEIVE APPROVED STAMP FROM ARCHITECT OR ENGINEER PRIOR TO ORDERING AND FABRICATION.
 - PROVIDE WALL MOUNTED ANGLE SUPPORTS (FINISH MATCH THE COLOR AND MATERIAL OF ADJACENT CASEWORK) WHERE NECESSARY FOR SUPPORT OF COUNTERTOPS ABOVE KNEE SPACES.
 - PROVIDE CONCEALED WOOD BLOCKING PARTITION AT LOCATIONS WHERE WORK SURFACE, SHELVING, DISPLAYS, CHAIRS, HANDRAILS AND/OR EQUIPMENT WILL BE MOUNTED OR ATTACHED TO THE FACE OF WALL FOR STRUCTURAL STABILITY. REFERENCE FLOOR PLANS FOR LOCATIONS OF SUCH EQUIPMENT. ALL CONCEALED WOOD SHALL BE FIRE RETARDANT LUMBER AND INSTALL TO WITH THE LATEST FINISH OUT.
 - ALL FRP SURFACES TO BE SEALED.

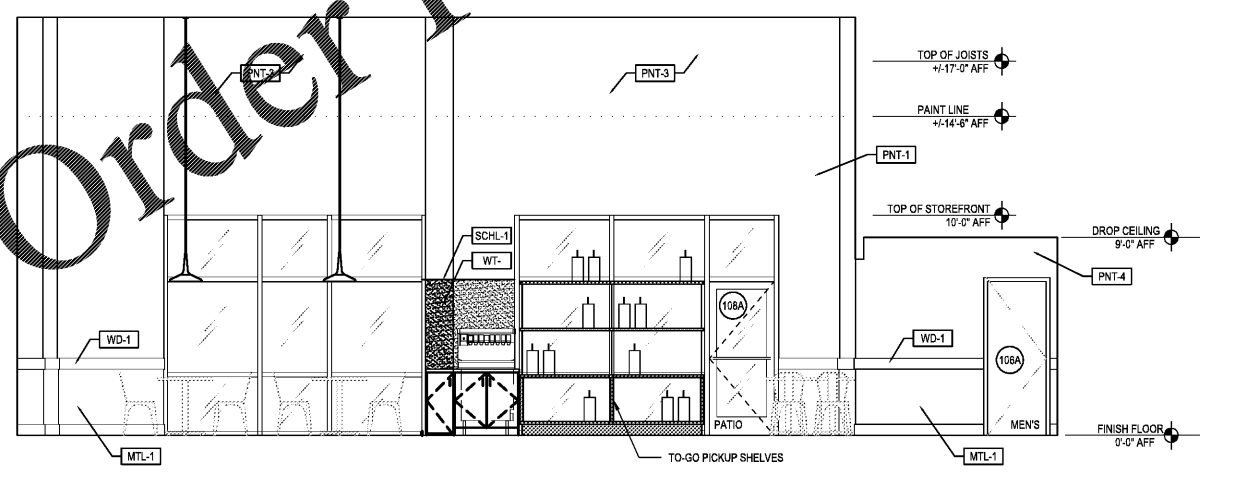
ORDER COUNTER / KITCHEN SECTION SCALE: 1/4" = 1'-0" 5



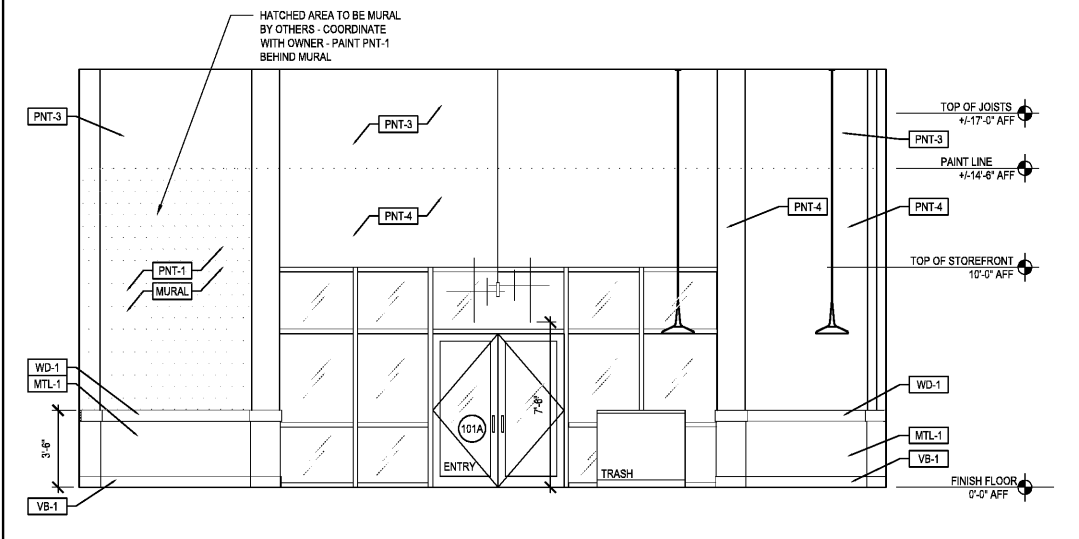
DINING SCALE: 1/4" = 1'-0" 4



ORDER COUNTER SCALE: 1/4" = 1'-0" 3



BEVERAGE + TO GO SCALE: 1/4" = 1'-0" 2



MAIN ENTRANCE SCALE: 1/4" = 1'-0" 1

Order Plans @

WWW.D3STUDIO.COM

d3 studio
 PLANNING * ARCHITECTURE * INTERIORS
 1318 CENTRAL AVENUE :: SUITE A-10
 CHARLOTTE, N.C. 28205
 WEBSITE :: WWW.D3STUDIO.COM



FOR CONSTRUCTION
Viva Chicken
 PERUVIAN ROTISSERIE JOINT
 1139 WOODRUFF RD.
 -SUITE B
 GREENVILLE, SC
 29607

REVISION

no.	date	comment

DRAWN BY: JWT
 CHECKED BY: SFB
 SUBMITTAL DATE: 02.09.2021
 PROJECT NUMBER: 02-2031

INTERIOR ELEVATIONS

A2.0