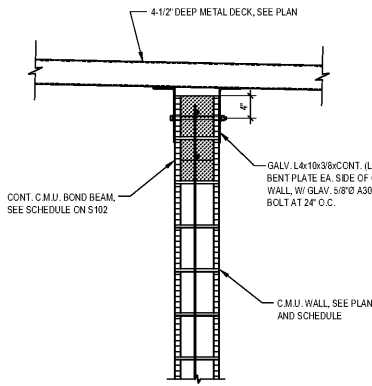
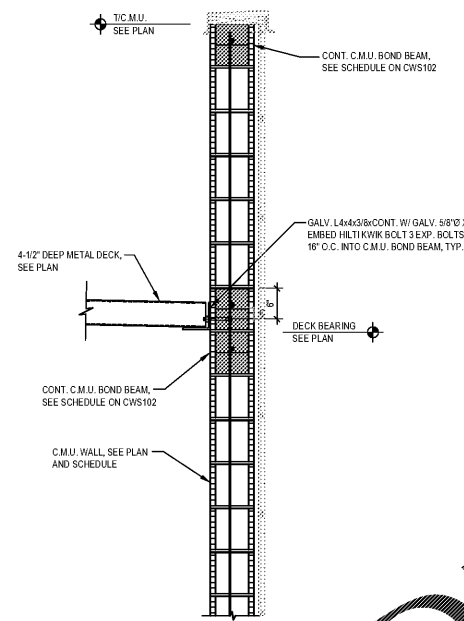


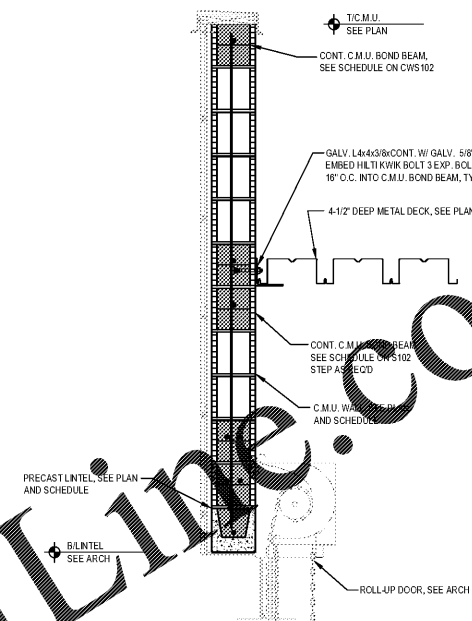
SECTION 1
3/4" = 1'-0"
CWS301



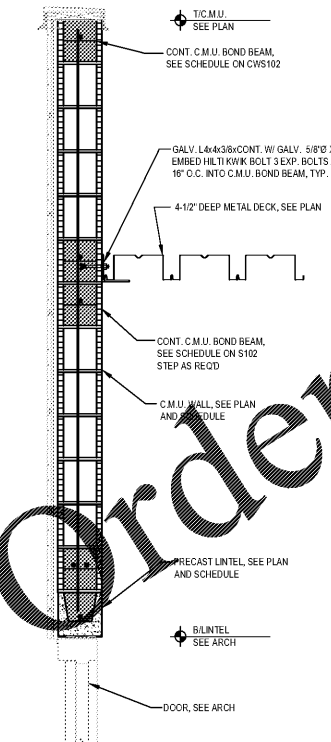
SECTION 2
3/4" = 1'-0"
CWS301



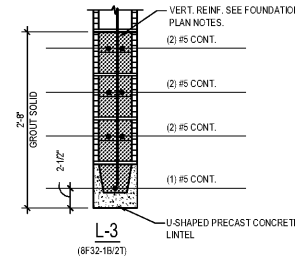
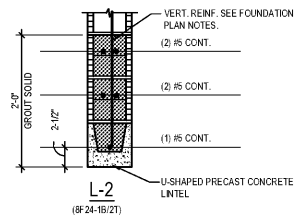
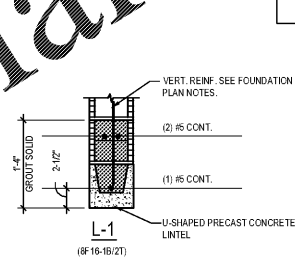
SECTION 3
3/4" = 1'-0"
CWS301



SECTION 4
3/4" = 1'-0"
CWS301



SECTION 5
3/4" = 1'-0"
CWS301



8" PRECAST SCHEDULE

DETAIL 6
N.T.S.
CWS301

- NOTES:**
1. PRECAST LINTELS BY CASTCRETE CORPORATION OR APPROVED EQUAL.
 2. SHORE PRECAST LINTEL PER MANUFACTURER RECOMMENDATIONS.
 3. SEE THE ARCHITECTURAL DRAWINGS FOR SIZE AND LOCATION OF ALL OPENINGS.
 4. PROVIDE 4" MINIMUM BEARING EACH END.
 5. EXTEND REINF. 18" MIN. BEYOND OPENING EA. END, TYP.

Order Plans @ www.LDILine.com

HIGGENBOTHAM
Structural Engineers
3222 Centre Drive, Suite F
Orlando, Florida 32833
Phone: 407 286 1787
Fax: 407 286 2281
FLORIDA CA. NO. 28950

1925 Prospect Ave.
Orlando, FL 32814
P (407) 661-9100
P (407) 661-9101
www.cp.com
Florida Corporate Certificate #AA 000626

4
Cuhaci & Peterson
Architects Engineers Planners

CLIENT NAME
BLACKFIN PARTNERS INVESTMENTS, INC.
4400 PCA BLVD, SUITE 600
PALM BEACH GARDENS, FL 33410

PROJECT NAME
7-ELEVEN #1795 - OCALA, FL
9000 BLOCK OF SE MARICAMP ROAD
OCALA, FL 34470

JUAN B. CANO, P.E.
FLORIDA LICENSE NO. 69377

| | |
|-------------|------------|
| PROJECT NO. | 2200355 |
| DATE | 12/17/2020 |
| DRAWN | REE |
| CHECKED | JSC |

CWS301