

1925 Prospect Ave.
Orlando, FL 32814
P (407) 661-9100
P (407) 661-9101
www.cp.com
Florida Corporate Certificate #AA 0006256

Cuhaci & Peterson
Architects Engineers Planners

CLIENT NAME
BLACKFIN PARTNERS INVESTMENTS, INC.
4400 PCA BLVD, SUITE 600
PALM BEACH GARDENS, FL 33410

PROJECT NAME
7-ELEVEN #1795 - OCALA, FL
9000 BLOCK OF SE MARICAMP ROAD
OCALA, FL 34470

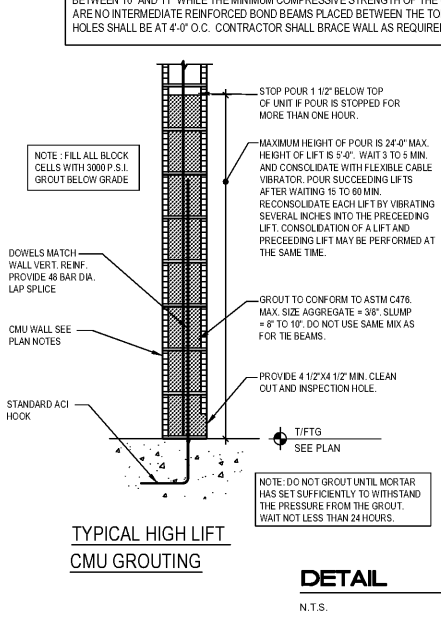
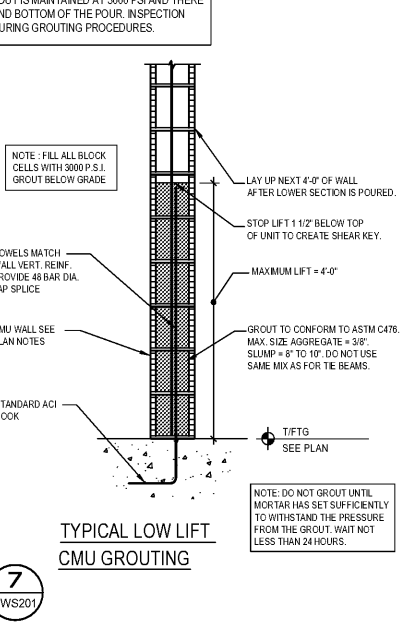
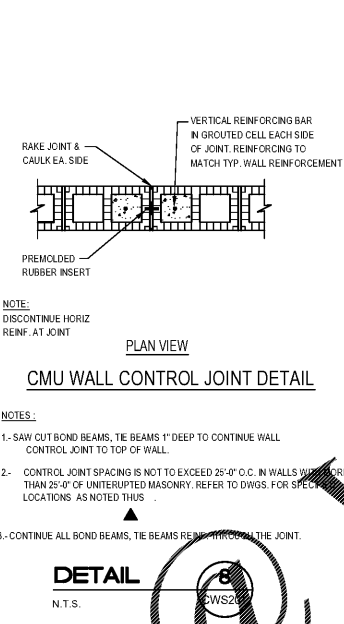
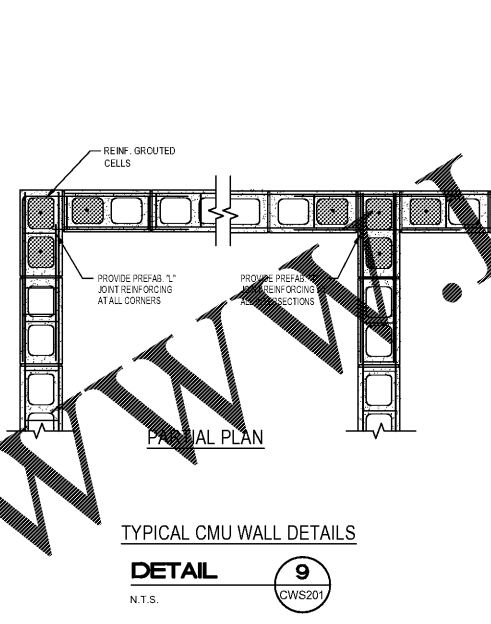
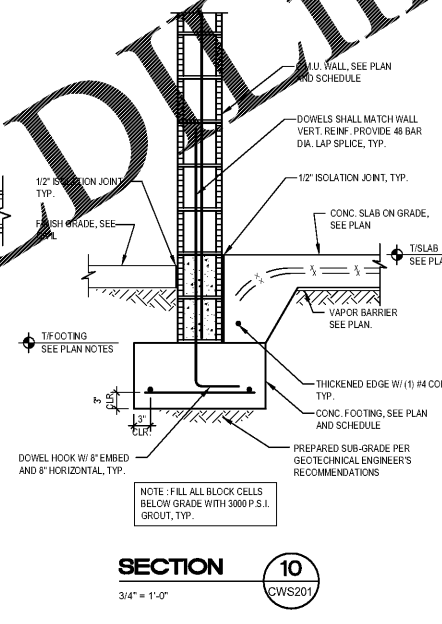
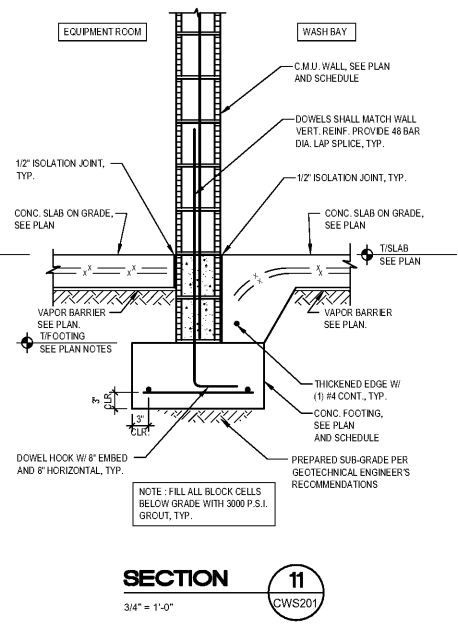
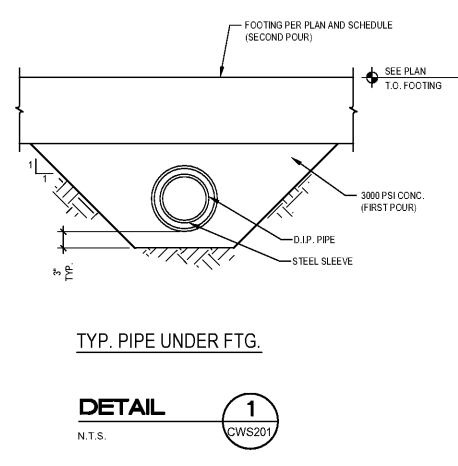
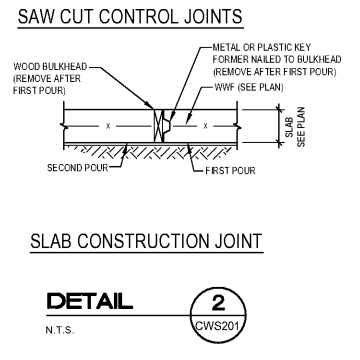
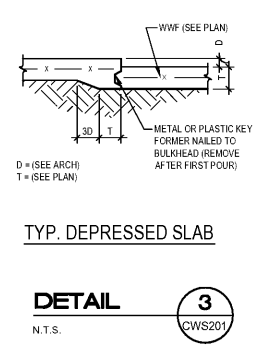
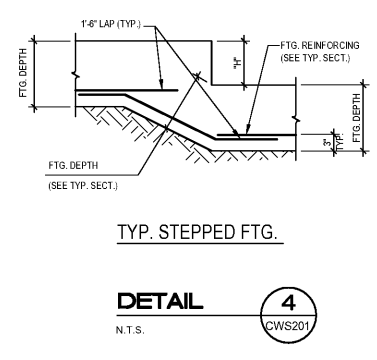
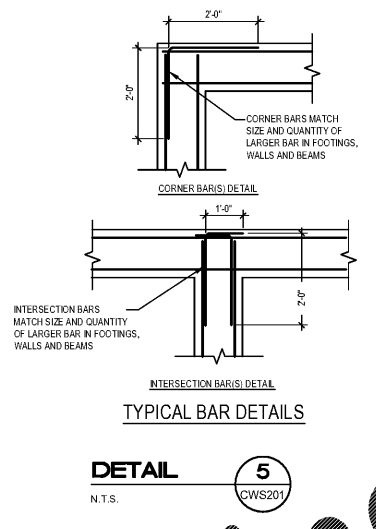
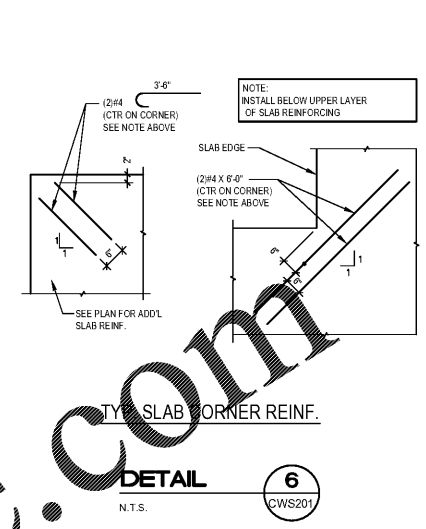
JUAN B. CANO, P.E.
FLORIDA LICENSE NO. 69377

PROJECT NO.	2200355
DATE	12/17/2020
DRAWN	REE
CHECKED	JSC

RELEASE

HIGGENBOTHAM
Structural Engineers
3222 Centre Drive, Suite F
Orlando, Florida 32833
Phone: 407 286 1787
Fax: 407 286 2281
FLORIDA, CA, NO. 28950

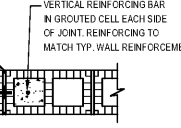
CWS201



Order Plans @

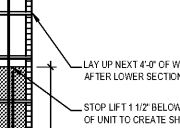
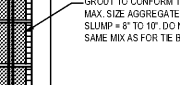
DETAIL 8

PLAN VIEW



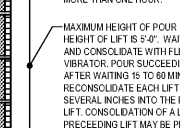
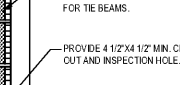
Order Plans @

DETAIL 7



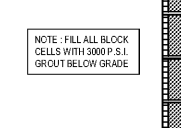
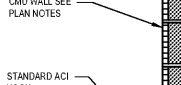
Order Plans @

SECTION 12



Order Plans @

SECTION 13



SECTION 14
3/4" = 1'-0" CWS201

SECTION 13
3/4" = 1'-0" CWS201

SECTION 12
3/4" = 1'-0" CWS201

NOTE: THE CONTRACTOR MAY ELECT TO PLACE GROUT IN 8'-0" LIFTS PROVIDING THAT THE SLUMP OF THE GROUT IS BETWEEN 10" AND 11" WHILE THE MINIMUM COMPRESSIVE STRENGTH OF THE GROUT IS MAINTAINED AT 3000 PSI AND THERE ARE NO INTERMEDIATE REINFORCED BOND BEAMS PLACED BETWEEN THE TOP AND BOTTOM OF THE POUR. INSPECTION HOLES SHALL BE AT 4'-0" O.C. CONTRACTOR SHALL BRACE WALL AS REQUIRED DURING GROUTING PROCEDURES.