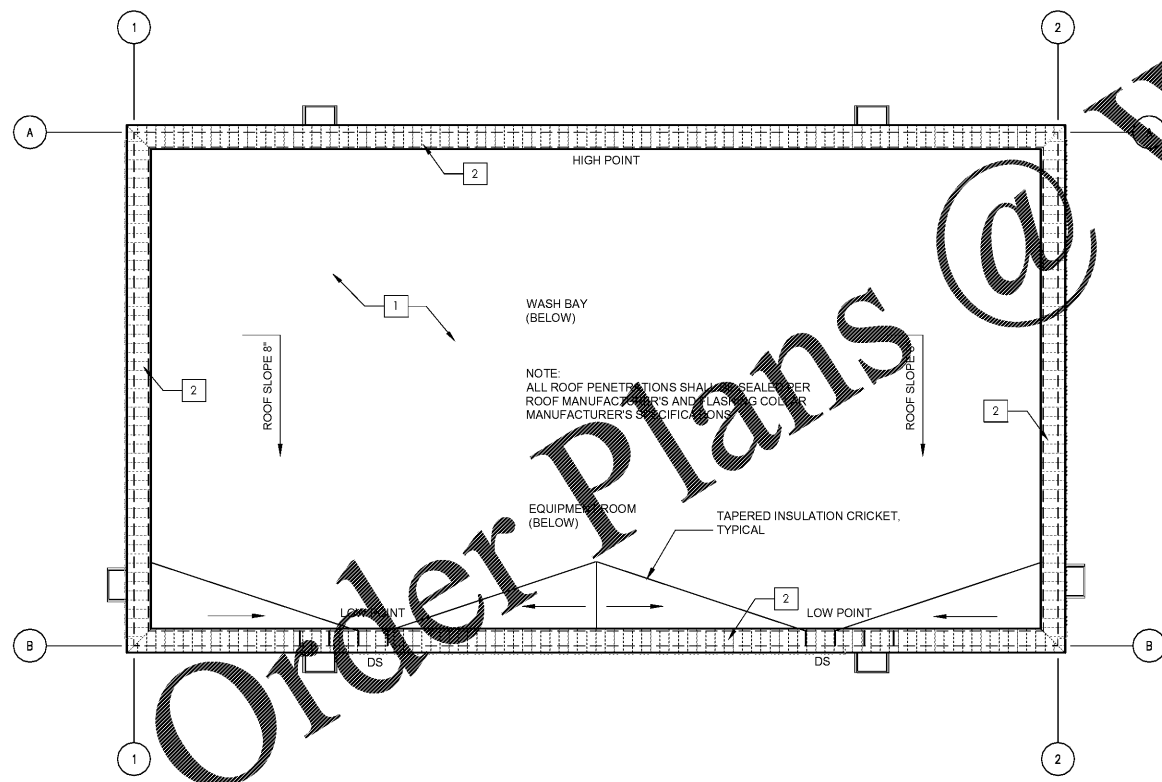
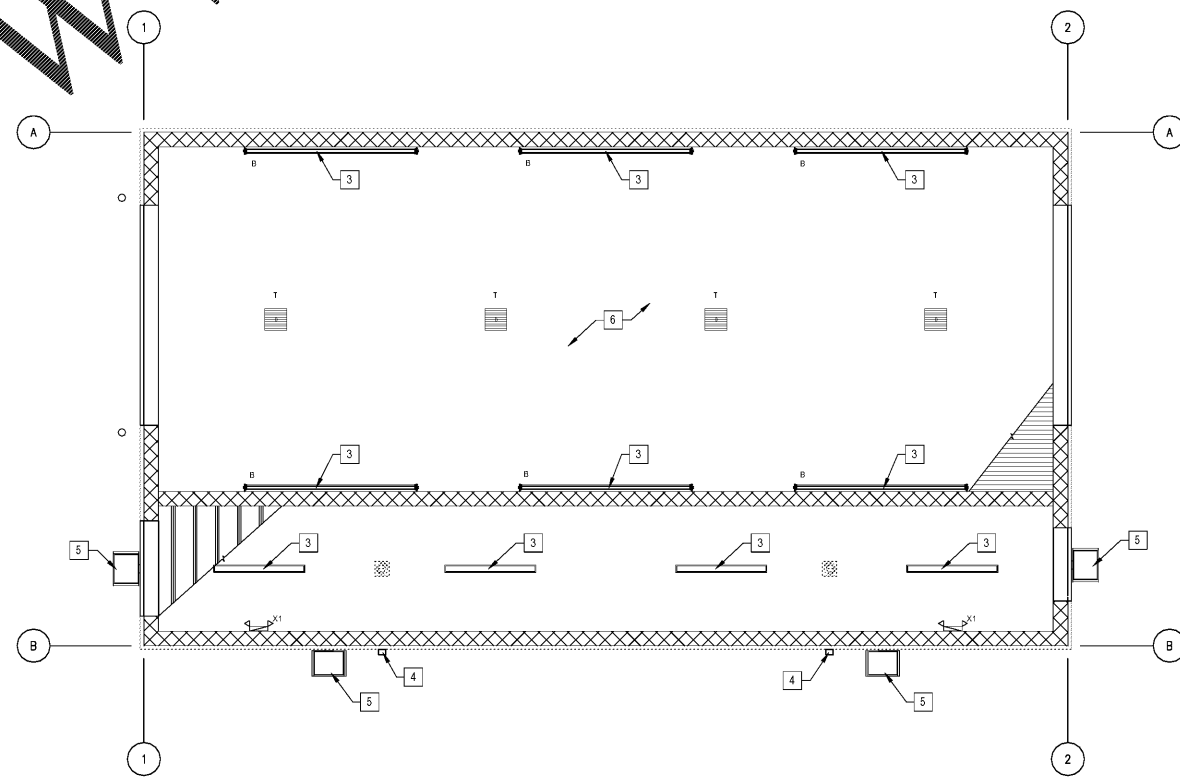


KEYNOTES	
1	EPDM SINGLE-PLY ROOFING MATERIAL OVER POLYISO CLOSED CELL RIGID BOARD INSULATION (3" MIN) OVER 1/2" EXTERIOR SHEATHING AND CSI D4.5 LONG SPAN METAL ROOF DECKING (OR APPROVED EQUAL)
2	METAL CAP FLASHING
3	LIGHT FIXTURE
4	SCUPPER BOXES AND DOWNSPOUTS (TYP.)
5	RUID BETALED WALL PACK LIGHTING SEC-EDG-3M-WM (10 LOCATIONS) REF ELEC
6	12" WIDE PVC LINER PANEL CEILING FINISH @ WASH BAY ONLY RUN PANEL PERPENDICULAR TO DECKING



1 CAR WASH ROOF PLAN  
1/4" = 1'-0"



2 CAR WASH REFLECTED CEILING PLAN  
1/4" = 1'-0"



WWW.LDILine.com

Order Plans @

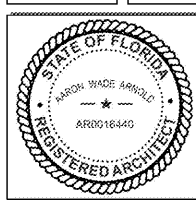
1925 Prospect Ave.  
Orlando, FL 32814  
P (407) 661-9100  
P (407) 661-9101  
[www.ep.com](http://www.ep.com)  
Florida Corporate Certificate #AA 000826



CLIENT NAME  
**BLACKFIN PARTNERS INVESTMENTS, INC.**  
4400 PCA BLVD, SUITE 600  
PALM BEACH GARDENS, FL 33410

PROJECT NAME  
**7-ELEVEN #11795 - OCALA, FL**  
9000 BLOCK OF SE MARICAMP ROAD  
OCALA, FL 34470

SHEET TITLE  
**CAR WASH REFLECTED CEILING PLAN AND ROOF PLAN**



RELEASE	

PROJECT NO.	2200355
DATE	12/17/2020
DRAWN	JS
CHECKED	PETE CRUZ

CWA5.0

COPYRIGHT © All rights reserved. Complete this sheet, notes and other documents are intended to be used in conjunction with the project of C.A.P. & P. and shall not be used for any other project without the written consent of C.A.P. & P. All other rights reserved. No part of this document may be reproduced without the written consent of C.A.P. & P.