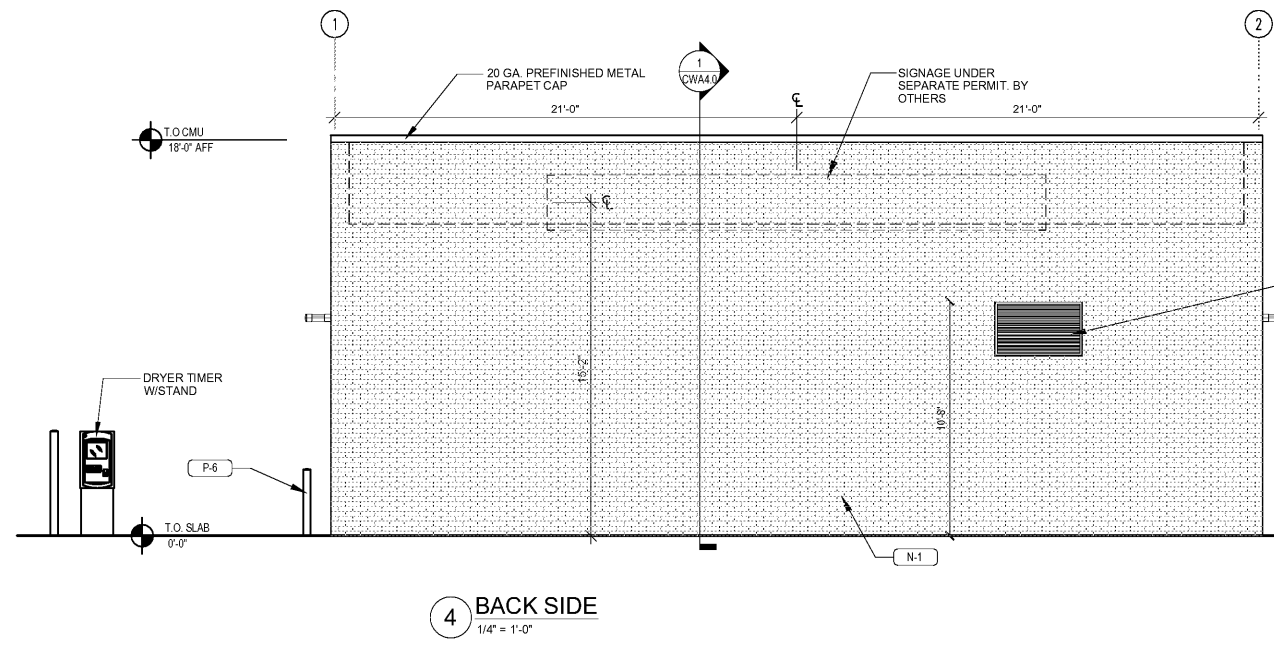
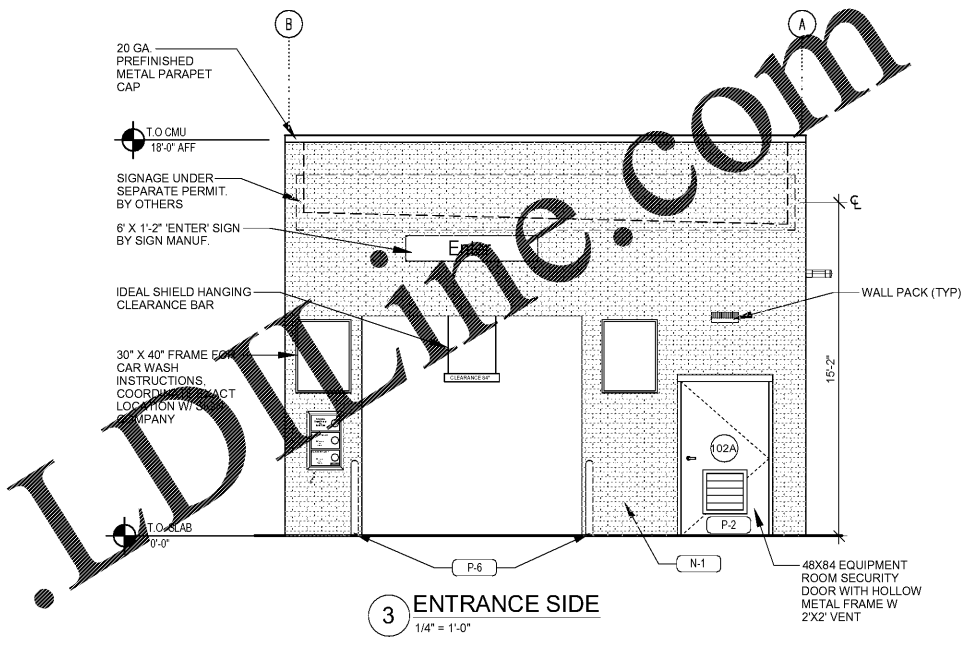


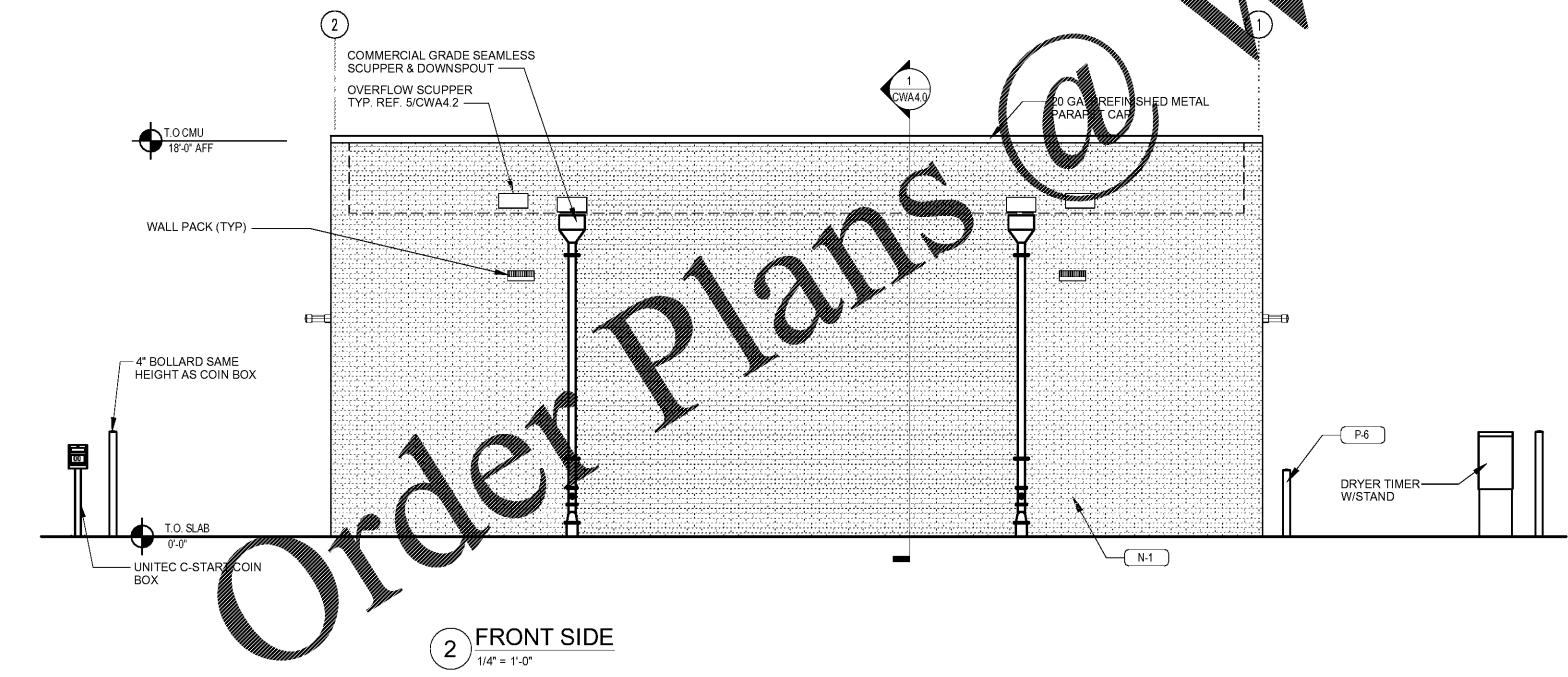
EXTERIOR MATERIALS SCHEDULE (NOT ALL MATERIALS IN SCHEDULE ARE USED)		
NO.	MATERIAL	MANUF.-COLOR
MR-1	MEMBRANE ROOFING	DUROLAST - WHITE
P-2	EXTERIOR HM DOORS, FRAMES	SHERWIN WILLIAMS - MISTY SW 6232
P-6	EXTERIOR BOLLARDS	SHERWIN WILLIAMS - TRICORN BLACK SW6259
N-1	FIBER CEMENT PANEL	NICHIHA - VINTAGE BRICK PAINTED P-1



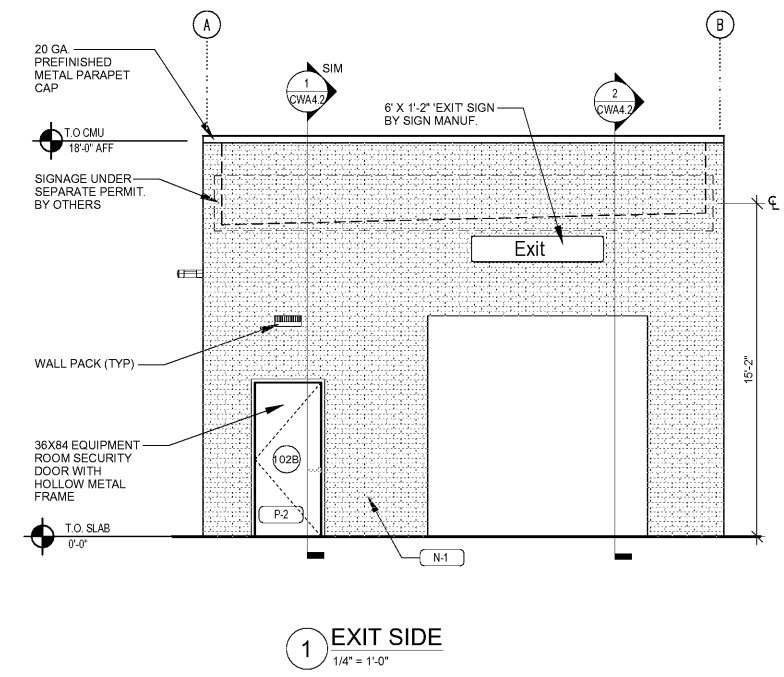
4 BACK SIDE
1/4" = 1'-0"



3 ENTRANCE SIDE
1/4" = 1'-0"



2 FRONT SIDE
1/4" = 1'-0"



1 EXIT SIDE
1/4" = 1'-0"

Order Plans @ WWW.LDLINE.COM

1925 Prospect Ave.
Orlando, FL 32814
P (407) 661-9100
P (407) 661-9101
www.ep.com
Florida Corporate Certificate #AA 008626

4
Cuhaci & Peterson
Architects Engineers Planners

CLIENT NAME
BLACKFIN PARTNERS INVESTMENTS, INC.
4400 PCA BLVD, SUITE 600
PALM BEACH GARDENS, FL 33410

PROJECT NAME
7-ELEVEN #1795 - OCALA, FL
9000 BLOCK OF SE MARICAMP ROAD
OCALA, FL 34470



RELEASE	

PROJECT NO.	2200355
DATE	12/17/2020
DRAWN	JS
CHECKED	GA

CWA2.0