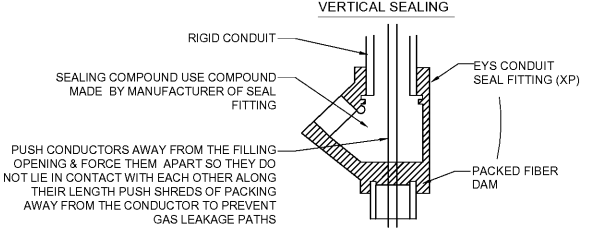


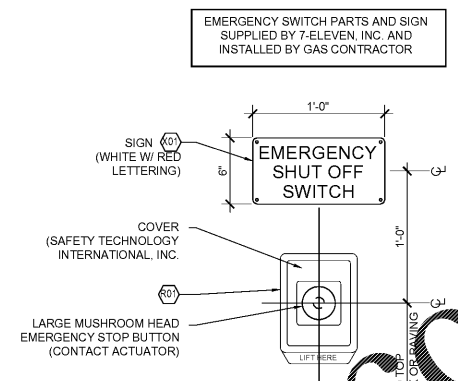
FE PETRO MAGVFC - VARIABLE FREQUENCY CONTROLLER. SEE MANUAL FOR WIRING INSTRUCTIONS.

4 MAG VFC DETAIL  
 NTS



**NOTE:**  
 PROVIDE EXPLOSION PROOF SEALS. IN ACCORDANCE WITH ARTICLE 501, CLASS 1, DIVISION 2 OF THE LATEST NATIONAL ELECTRICAL CODE TYPICAL FOR ALL UNDERGROUND CONDUIT STUB-UPS INTO EQUIPMENT.  
 SEAL OFF ALL CONDUIT ENTERING OR LEAVING CAVITIES OR ENCLOSURES OF DISPENSERS AND ASSOCIATED EQUIPMENT. IN ADDITION, ALL CONDUITS COMING FROM THE BUILDING THROUGH A HAZARDOUS LOCATION ALSO REQUIRE SEAL-OFFS AT BOTH ENDS.

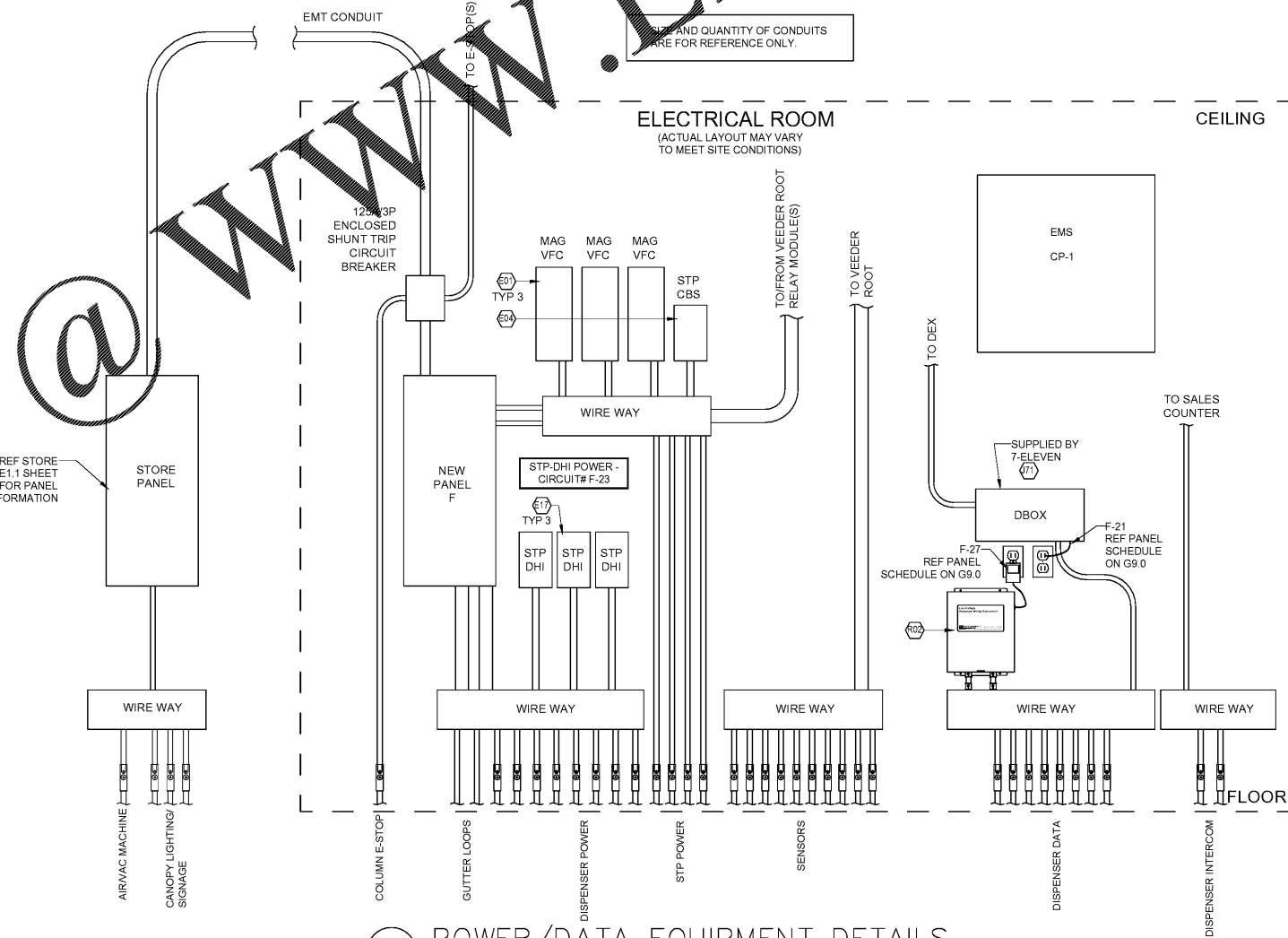
3 SEAL FITTING INSTALLATION  
 NTS



EMERGENCY SWITCH PARTS AND SIGN SUPPLIED BY 7-ELEVEN, INC. AND INSTALLED BY GAS CONTRACTOR.  
 CONDUITS FOR EMERGENCY SWITCHES LOCATED ON CANOPY COLUMNS SHOULD BE RUN INSIDE COLUMN WHEN NO COLUMN WRAPS ARE PRESENT - INSTALL INSIDE COLUMN.

2 EMERGENCY SHUT OFF W/ COVER  
 NTS

STORE CONTRACTOR:  
 INSTALL CONDUIT FROM THE ELECTRICAL ROOM GUTTERS TO 10'-0" PAST BUILDING SLAB. SEE SPECIFICATION SHEET G16.0, SECTION VII, 2.3.1 FOR CONDUIT TYPES.  
 FUELING CONTRACTOR:  
 EXTEND CONDUITS FROM 10'-0" PAST BUILDING SLAB TO FINAL TERMINATION POINT. SEE SPECIFICATION SHEET G16.0, SECTION VII, 2.3.1 FOR CONDUIT TYPES.  
 NOTE:  
 REFERENCE SHEET G11.0 FOR DISPENSER HOOK ISOLATION WIRING DIAGRAMS, STP CONTROLLER, AND VEEDER ROOT RELAY MODULE WIRING DIAGRAMS.

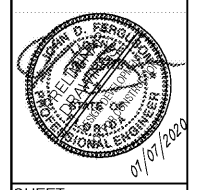


1 POWER/DATA EQUIPMENT DETAILS  
 NTS

**Order Plans @**

**WWW.LDILLINE.com**

Job#:	SEI-31123	Scale:	AS NOTED	Date:	01/07/2020	Drawn By:	TJS	Checked By:	CVK
<p>Documents prepared by Core States Group are to be used for the specific project and site only. Any extension of use to other projects, by owner or contractor, without the expressed, written consent of Core States Group is prohibited. Core States Group is not liable for any errors or omissions in this drawing that may occur. Core States Group shall not be held liable for any damages, claims and losses.</p>									
<p>7-ELEVEN, INC.                  3200 HACKBERRY ROAD, IRVING TEXAS 75063                  7-ELEVEN #41795                  9000 BLOCK OF SE MARICAMP ROAD                  OCALA, FL 34470                  MISCELLANEOUS ELECTRICAL                  DETAILS</p>									
<p>Job Description: Proto 12-01-2020</p>									
<p>Job Title: FUELING - USA</p>									



SHEET:  
**G10.0**  
 FUELING - USA