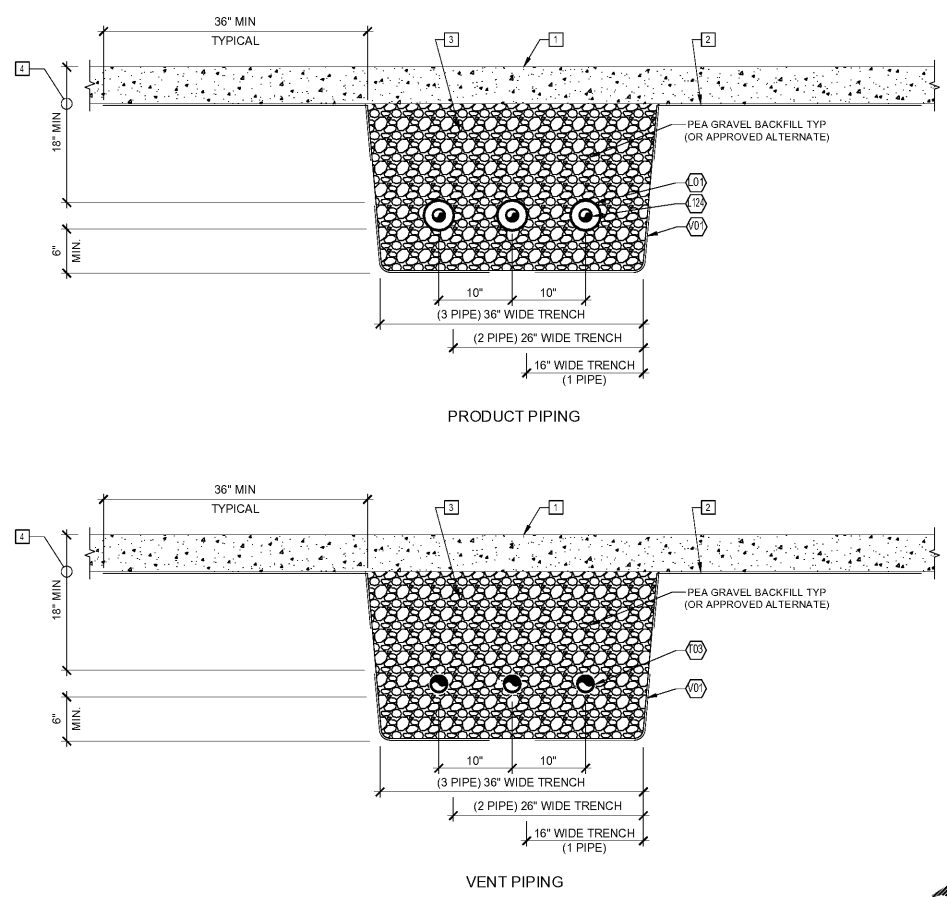


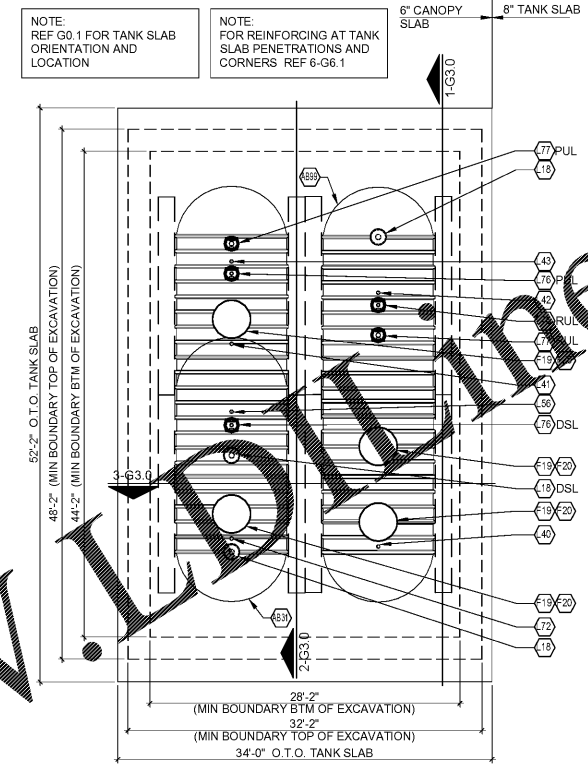
PRINTED BY: TSWAR
 DRAWING NAME: 41795 - G1.0 FUELING PIPING AND TANK PLANNING
 PRINT DATE: Jun 07, 2021 - 2:16pm

Order Plans @

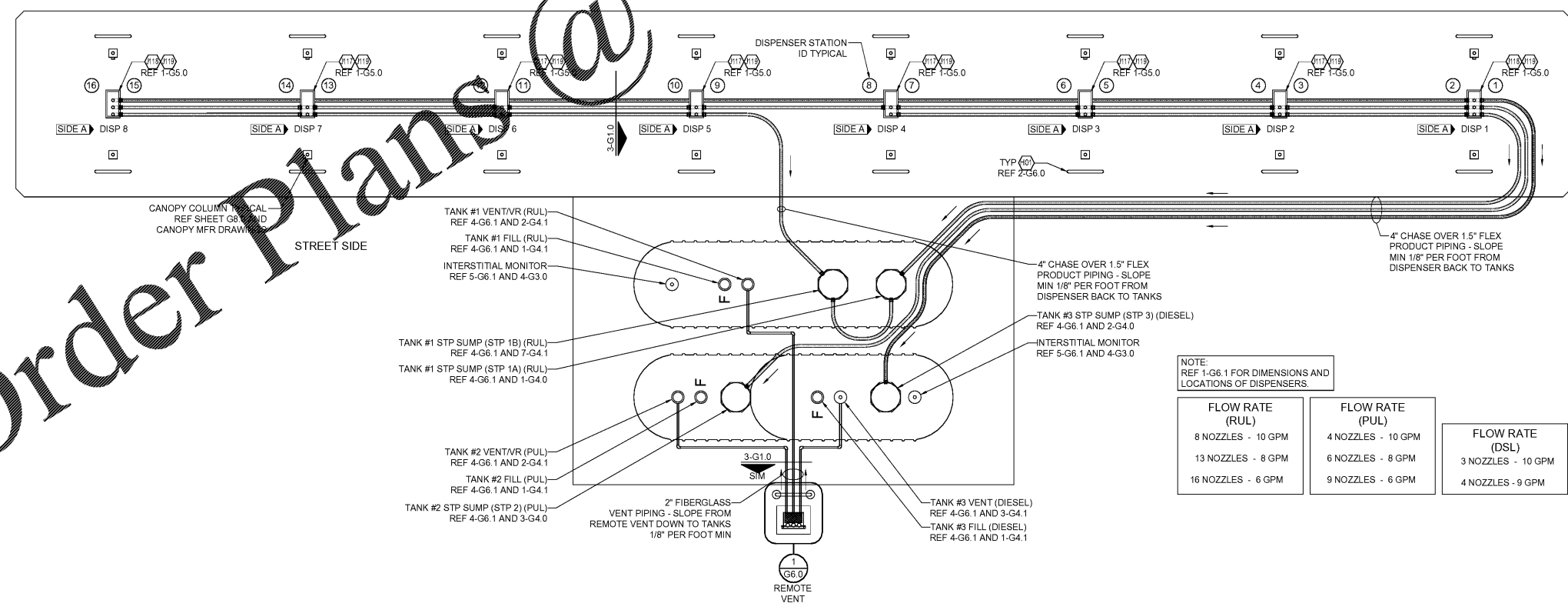
WWW.LADLINE.COM



3 PIPING TRENCH SECTION
 1/8"=1'-0"



2 TANK SLAB PLAN
 1/8"=1'-0"



1 FUEL PIPING PLAN
 1/8"=1'-0"

GENERAL NOTES

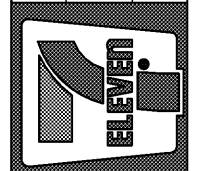
- ALL CONSTRUCTION SHALL MEET COUNTY STANDARDS. CONTRACTOR TO SECURE ENTIRE CONSTRUCTION AREA WITH CHAIN LINK FENCING DURING CONSTRUCTION PERIOD.
 - THE CONTRACTOR SHALL IMMEDIATELY NOTIFY ENGINEER OF ANY DIFFERENCES BETWEEN THE ACTUAL FIELD CONDITIONS AND THE PLANS BEFORE PROCEEDING WITH CONSTRUCTION.
 - FUEL CONTRACTOR SHALL BE RESPONSIBLE FOR THE INTEGRITY OF THE PIPING SYSTEM DURING CANOPY ERECTION AND CONCRETE FLATWORK INSTALLATION.
 - AFTER COMPLETING INSTALLATION OF DISPENSERS, THE FUEL CONTRACTOR IS TO RE-INSTALL ALL EXISTING ORANGE CONSTRUCTION FENCE AROUND ENTIRE DISPENSER.
- FUEL CONTRACTOR IS TO BE AWARE THAT ON THE DAY THE GASOLINE SYSTEM IS PUT INTO SERVICE, THE FUEL CONTRACTOR AND A HAZARDOUS WASTE SERVICE CONTRACTOR MUST BE ON SITE ONE (1) HOUR PRIOR TO STARTUP AND MUST REMAIN ON SITE THREE (3) ADDITIONAL HOURS FOR A TOTAL OF FOUR (4) HOURS. ANY COSTS INCURRED OVER FOUR (4) HOURS DUE TO FUELING SYSTEM ISSUES, SHOULD BE BILLED AS A CHANGE ORDER.

KEY NOTES

- 6" CONCRETE SLAB AT FUELING CANOPY. REF G0.1 AND CIVIL DRAWINGS FOR TOS ELEVATIONS.
- GEOTECH FABRIC MATERIAL TO EXTEND 36" PAST EACH SIDE OF PIPING TRENCH. ALL GEOTECH FABRIC MATERIAL SHALL BE PINNED PRIOR TO BACKFILLING. METHOD OF PINNING FABRIC AT TOP OF EXCAVATION TO BE APPROVED BY THE 7-ELEVEN CONSTRUCTION MANAGER.
- PIPING TRENCHES SHALL BE DUG IN SUCH A MANNER THAT THE TRENCH WIDTH IS EQUAL TO AT LEAST TWICE WIDTH OF ALL PIPING CONTAINED WITHIN. MAINTAIN A MINIMUM OF 4" (10cm) CLEAR DISTANCE BETWEEN PIPING POSITIONED IN THE TRENCH AND 6" WHERE PIPING CROSSES OVER EACH OTHER. THE BOTTOM OF THE TRENCH SHALL BE AS UNIFORM AS POSSIBLE TO ELIMINATE HIGH SPOTS AND ENSURING AN EVEN LAYER OF BEDDING MATERIAL UNDER THE PIPE. REMOVE ALL SHARP ROCKS AND DEBRIS FROM THE TRENCH BOTTOM BEFORE BEDDING MATERIAL IS INSTALLED.
- SITE CONDITIONS MAY CAUSE VARIATIONS WHICH MUST BE APPROVED BY 7-ELEVEN AND MANUFACTURER. PIPING BURIAL DEPTHS LESS THAN 18" REQUIRES 7-ELEVEN APPROVAL.

Rev. #	Date	Description

7-ELEVEN, INC.
 3200 HACKBERRY ROAD, IRVING TEXAS 75063
 7-ELEVEN #41795
 9000 BLOCK OF SE MARICAMP ROAD
 OCALA, FL 34470
 FUELING PIPING AND TANK PLAN
 Proto 12-01-2020



CORE STATES GROUP
 1700 Industrial Drive, Suite B
 Rogers, AR 72758
 FAX (479) 668-4401

Job#: SEI-31123
 Scale: AS NOTED
 Date: 01/07/2020
 Drawn By: TJS
 Checked By: CVK

Documents prepared by Core States Group are to be used for the specific project and site for which they are intended. Any extension of use to other projects, by owner or contractor, without the expressed, written consent of Core States Group is prohibited. Core States Group is not liable for any claims or damages arising from the use of these documents for any other than the specific intended use. Core States Group reserves the right to modify these documents without notice.



SHEET:
G1.0
 FUELING - USA