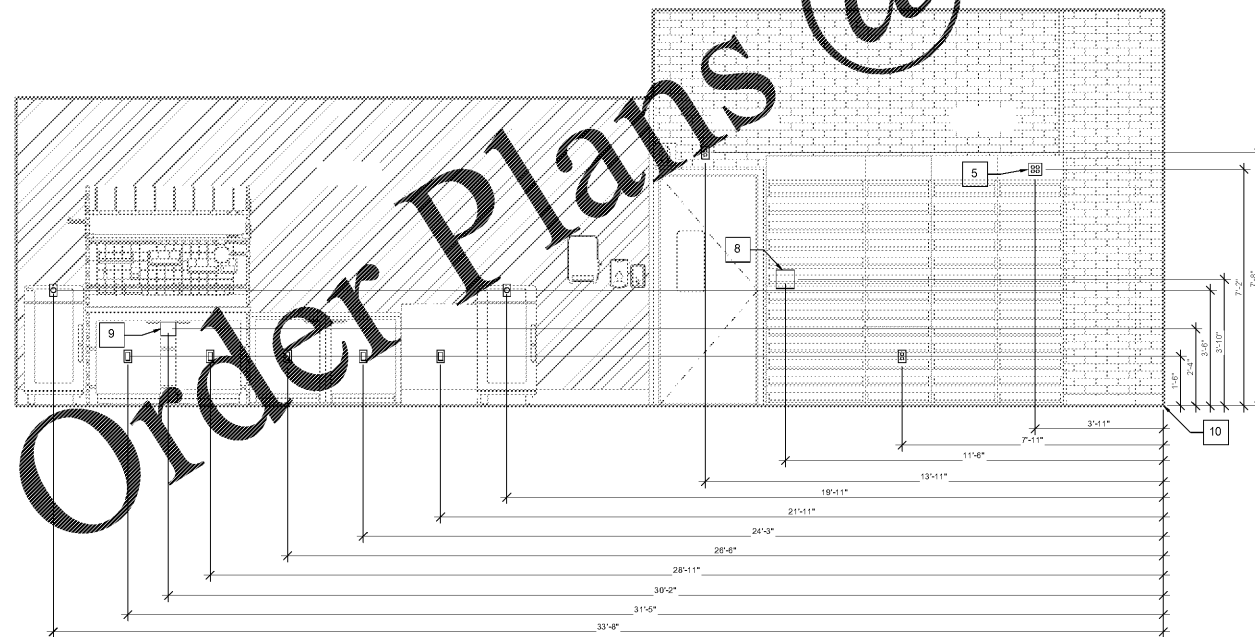


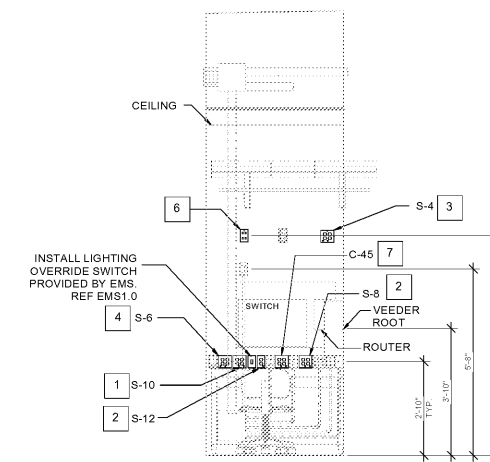
3 INTERIOR ELEVATION - BEVERAGE BAR  
3/8" = 1'-0"



2 INTERIOR ELEVATION - SALES  
3/8" = 1'-0"

KEYNOTES - POWER	
1	WORK STATION RECEPTACLE FOR TASK LIGHTING AND TRAINING COMPUTER
2	ISOLATED GROUND (IG) 20 AMP CIRCUIT FOR STORE COMPUTER. FLUSH MOUNT FACE PLATE FOR DUPLEX RECEPTACLE WHICH RECEIVES PLUG FROM UPS (BATTERY BACKUP) AND FUTURE PERIPHERALS.
3	QUAD RECEPTACLE FOR SECURITY EQUIPMENT. RECEPTACLE RECEIVES THE FOLLOWING EQUIPMENT PLUGS: A. VCR B. MULTIPLEX CONNECTION FOR CAMERAS C. INTERCOM TO RECORD AUDIO AT SALES COUNTER D. ALARM RECEIVER
4	ISOLATED GROUND (IG) 20 AMP CIRCUIT FOR STORE COMPUTER. FLUSH MOUNT FACE PLATE FOR QUAD RECEPTACLE.
5	QUAD TO BE MOUNTED BEHIND CIGARETTE FIXTURE SO NOT VISIBLE TO CUSTOMER
6	DATA FOR NETWORK SWITCH TO DIGITAL MENU BOARD.
7	QUAD RECEPTACLE FOR QSIC EQUIPMENT. RECEPTACLE RECEIVES THE FOLLOWING EQUIPMENT PLUGS: A. QBIT B. AVA POWER C. ROUTER D. SPARE
8	J-BOX FOR ANSUL PULL SYSTEM. COORDINATE WITH HOOD PACKAGE BEFORE ROUGH-IN.
9	JUNCTION BOX FOR CONNECTION TO POWER STRIP ON COOK WORKSTATION.
10	DIMENSIONS TAKEN FROM WALL END AND FLOOR LINE.

SYMBOL LEGEND	
	125 V GFCI RECEPTACLE, DUPLEX
	125 V RECEPTACLE, DUPLEX
	125 V I.G. RECEPTACLE, DUPLEX
	125 V RECEPTACLE, DOUBLE DUPLEX
	125 V I.G. RECEPTACLE, DOUBLE DUPLEX
	SPECIAL RECEPTACLE (SEE POWER PLAN FOR NEMA CONFIG)
	TELEPHONE DATA OUTLET



1 MGR'S OFFICE WIRING-POWER  
N.T.S.

Order Plans @ www.LDILine.com

1925 Prospect Ave.  
Orlando, FL 32814  
P (407) 661-9100  
P (407) 661-9101  
[www.ep.com](http://www.ep.com)  
Florida Corporate Certificate #AA 000626

**4**  
**Cuhaci & Peterson**  
Architects Engineers Planners

---

<p>CLIENT NAME <b>BLACKFIN PARTNERS INVESTMENTS, INC.</b> 4400 PCA BLVD, SUITE 600 PALM BEACH GARDENS, FL 33410</p>	<p>PROJECT NAME <b>7-ELEVEN #1795 - OCALA, FL</b> 9000 BLOCK OF SE MARICAMP ROAD OCALA, FL 34470</p>	<p>SHEET TITLE <b>ELECTRICAL DETAILS</b></p>
---	--	--

PROJECT NO. 2200355	DATE 12/17/2020	DRAWN BY SP	CHECKED BY JS	
------------------------	--------------------	----------------	------------------	--

E1.6