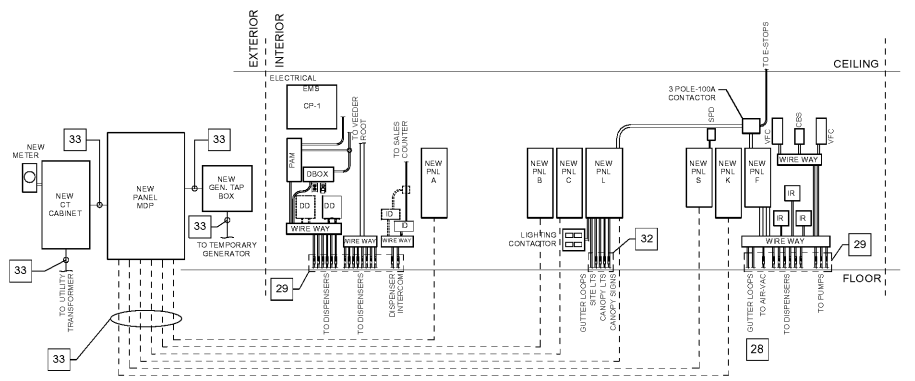


3 EVAPORATOR COIL WIRING
N.T.S.



2 PANELBOARD ELEVATION
N.T.S.

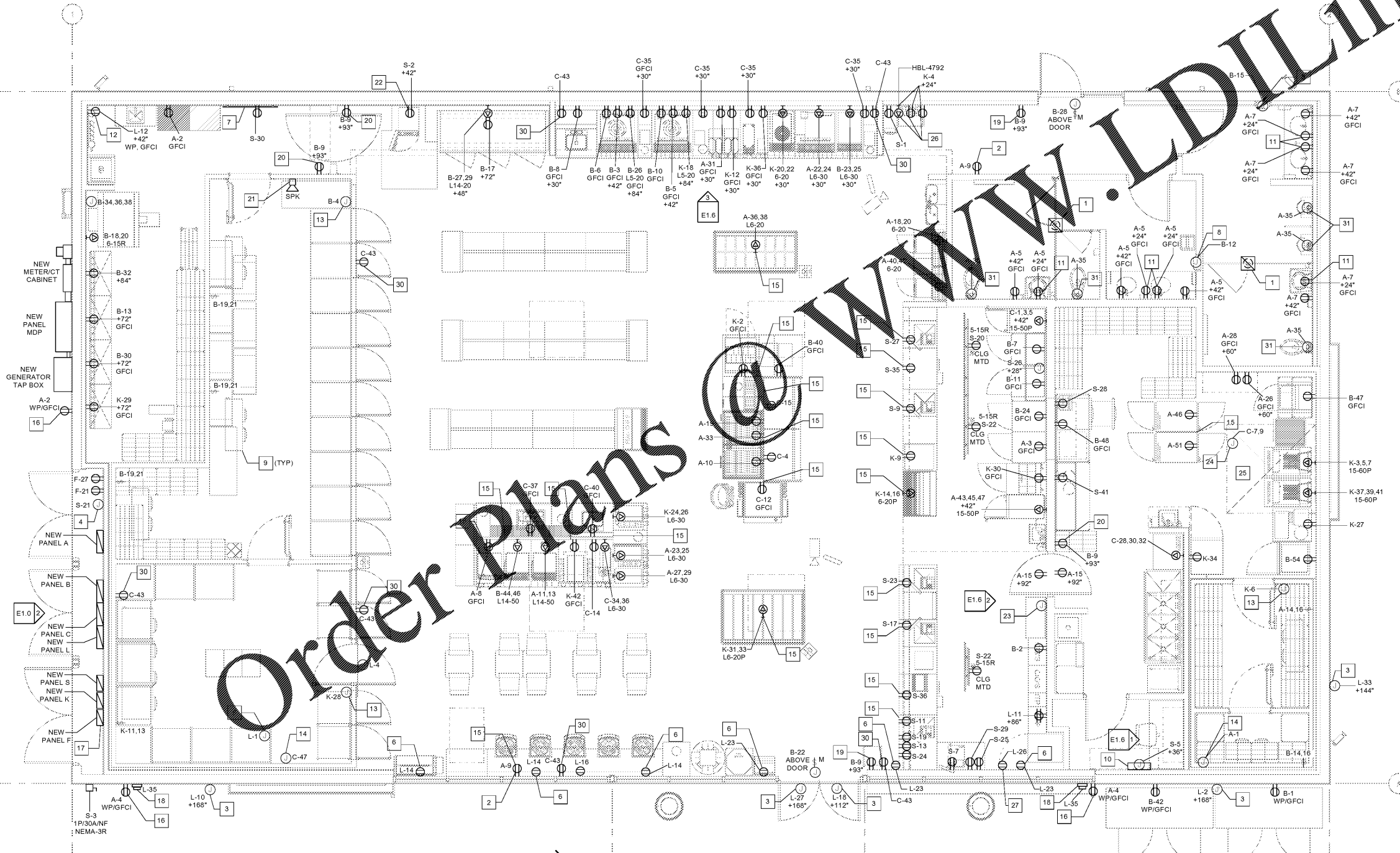
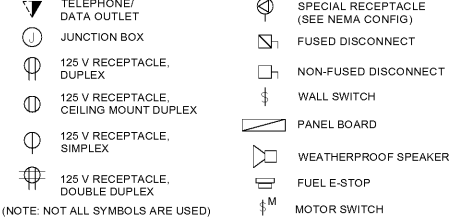
ELECTRICAL NOTES:

- ALL RECEPTACLES SERVED FROM PANEL "S" SHALL BE OF THE ISOLATED GROUND TYPE. ALL CIRCUITS SHALL CONTAIN A HOT, NEUTRAL, GROUND AND ISOLATED GROUND CONDUCTOR.
- AMPACITY OF ALL CONDUCTOR SIZES SHOWN ON PLANS IS BASED ON 75°C RATED TERMINATIONS AND CONDUCTOR INSULATION. CONTRACTOR SHALL FIELD VERIFY EQUIPMENT TEMPERATURE RATINGS OF ALL TERMINATIONS AND ADJUST CONDUCTOR SIZES PER NEC 110.14(C).
- ALL WIRING IS COPPER. REFER TO ELECTRICAL SPECIFICATIONS FOR FURTHER INFORMATION.
- ALL WALL MOUNTED RECEPTACLES SHALL BE 18" A.F.F. ON CENTER, UNLESS NOTED OTHERWISE.
- FURNISH AND INSTALL CORD AND CAP FOR ALL EQUIPMENT CONNECTED TO NEMA L-14R RECEPTACLE.
- G.C. TO COORDINATE POWER REQUIREMENTS FOR EXTERIOR SIGNAGE.
- THE UNGROUNDED AND GROUNDED CONDUCTORS OF EACH MULTIWIRED BRANCH CIRCUIT SHALL BE GROUPED BY WAYS OR SIMILAR MEANS IN AT LEAST ONE LOCATION WITHIN THE PANELBOARD OR OTHER POINT OF ORIGIN. REF NEC (210.4(D)).
- EACH MULTIWIRED BRANCH CIRCUIT SHALL BE PROVIDED WITH A MEANS THAT WILL SIMULTANEOUSLY DISCONNECT ALL UNGROUNDED CONDUCTORS AT THE POINT WHERE THE BRANCH CIRCUIT ORIGINATES. REF NEC (210.4).
- CONDUITS THAT ARE EXPOSED TO VARYING AMBIENT TEMPERATURES, SUCH AS COOLERS, FREEZERS, OR REFRIGERATION CONDENSERS, SHALL BE SEALED TO PREVENT CONVECTION OF AIR AND/OR MOISTURE. REF NEC (300.4).
- CONDUITS AND WIRING OVERHEAD WHERE EXPOSED SHALL BE ROUTED AT 90 DEGREE ANGLES PERPENDICULAR OR PARALLEL TO JOISTS. COORDINATE PAINTING OF CONDUIT WITH ARCHITECTURAL FINISHES.
- ALL ELECTRICAL WORK TO BE COMPLETED BY A LICENSED ELECTRICIAN.

KEYNOTES - POWER

- EXHAUST FAN SWITCH FAN WITH RESTROOM LIGHTS, TYP. REFER TO MECHANICAL FOR EXACT DETAILS AND LOCATIONS.
- DEVICES SHALL BE NEMA 5-20 UNLESS NOTED OTHERWISE. TYP OF 120V-20A CIRCUITS.
- EXTERIOR SIGNAGE J-BOX. COORDINATE FINAL LOCATION WITH SIGNAGE CONTRACTOR AND CONSTRUCTION MANAGER. RUN EXTERIOR BUILDING SIGNS THROUGH PHOTOCELL DRIVEN CONTACTOR. PROVIDE PAD-LOCKABLE BREAKER FOR MAINTENANCE.
- ENERGY MANAGEMENT ENCLOSURE PROVIDED BY OTHERS. PROVIDE 120V DEDICATED CIRCUIT ONLY.
- J-BOX FOR BEER SHELVE LIGHTS. COORDINATE WITH SHELVE AND COOLER SUPPLIER FOR FINAL DETAILS AND LOCATION.
- WINDOW RECEPTACLES MOUNT FLUSH IN CEILING. MOUNT ABOVE WINDOW HEADER IN OPEN CEILING AREA. PER NEC (422.31(B)). COORDINATE EXACT LOCATION WITH ELECTRICAL OUTLET WITH CONSTRUCTION MANAGER PRIOR TO ROUGH-IN.
- REFER TO EVAPORATOR COIL WIRING DETAIL. RE: 3/E1.0, TYP.
- VEEDER ROOT. COORDINATE INSTALLATION WITH FUELING PLANS. INSTALL IN ACCESSIBLE LOCATION. MOUNT AT 48" A.F.F. TO BOTTOM.
- RECEPTACLE FOR MOTION SENSOR FAN. REFER TO ARCHITECTURAL SHEETS FOR EXACT LOCATION. TYPE
- RECEPTACLE FOR WATER FILTRATION BOOSTER PUMP. E.C. TO INSTALL WATER-RESISTANT, "WHILE-IN-USE" COVER.
- E.C. TO PROVIDE WIRING FOR COOLER AND/OR FREEZER DOOR HEATERS AND DOOR FRAMES AND CONNECT TO MANUFACTURER SUPPLIED JUNCTION BOXES).
- E.C. TO INSTALL WEATHERPROOF J-BOX FOR RAYCHEM HEAT TRACE WHICH SUPPLIES PROTECTION FOR FREEZER CONDENSATE LINES. FURNISH HEATTRACE AND PROVIDE GFI-EPD CIRCUIT BREAKER AND INSTALL PER MANUFACTURER'S REQUIREMENTS. REF. ELECTRICAL SPECIFICATIONS.
- ROUTE CIRCUITRY FOR EQUIPMENT UNDER SLAB. RE: 1/E1.2
- SERVICE RECEPTACLE. WEATHERPROOF GFCI.
- REFER TO DETAIL #5 ON GAS PLANS SHEET G10 FOR PANEL "F" CONDUIT ROUTING.
- EMERGENCY GAS SHUT-OFF @ 48" A.F.F. COORDINATE WITH FUEL PLANS FOR EXACT LOCATION PRIOR TO ROUGH-IN.
- TRANSMITTER RECEPTACLE, G.C. TO PROVIDE MR. CHIME ENTRANCE ALERT TRANSMITTER (DATA). CONTACT MR. CHIME AT 877-672-4463.
- RECEIVER RECEPTACLE, G.C. TO PROVIDE MR. CHIME RECEIVER (DARD).
- INSTALL WEATHERPROOF SPEAKER, G.C. TO PROVIDE MR. CHIME SPEAKER (SPK) MOUNT ON WALL IN WALK IN COOLER AND CONNECT TO NEAREST RECEIVER OUTSIDE OF COOLER.
- ISOLATED GROUND (IG) 20 AMP CIRCUIT FOR ATM, FLUSH MOUNT DUPLEX FACE PLATE WITH ORANGE RECEPTACLE.
- INSTALL RECESSED JUNCTION BOX AND CONDUIT AS REQUIRED FOR FIRE SUPPRESSION SYSTEM MANUAL PULL STATION. COORDINATE EXACT LOCATION BEFORE INSTALLING.
- COORDINATE WITH HOOD SUPPLIER FOR EXACT LOCATION PRIOR TO ROUGH-IN.
- FLEXIBLE CORD AND TWIST LOCK RECEPTACLE WITH CONFIGURATION AND RATING TO MATCH EQUIPMENT TO BE USED IN LIEU OF DISCONNECT SWITCH AT ALL KITCHEN EQUIPMENT. WHERE DIRECT CONNECTION TO EQUIPMENT IS REQUIRED, PROVIDE LOCK-OFF DEVICE FOR MAINTENANCE AT CIRCUIT BREAKER.
- E.C. TO MAINTAIN 2" SPACING BETWEEN RECEPTACLES FOR STAND UP LOTTO MACHINE.
- JUNCTION BOX FOR ATM SIGN. VERIFY LOCATION WITH CONSTRUCTION MANAGER PRIOR TO COMMENCEMENT OF WORK.
- GUTTER LOOPS - ROUTING OF ALL WIRING THROUGH GUTTER AND BETWEEN PANELS AND OTHER WIRING DEVICES.
- CONDUITS SHOWN FOR REFERENCE ONLY. COORDINATE WITH FUEL DRAWINGS UNDER A SEPARATE PERMIT.
- RECEPTACLE FOR SPEAKER TO BE FLUSH MOUNTED DIRECTLY BEHIND SPEAKER. VERIFY EXACT HEIGHT AND LOCATION WITH ARCHITECTURAL DRAWINGS. INSTALLER TO HIDE POWER CABLE BEHIND THE SPEAKER USING CABLE TIES.
- JUNCTION BOX FOR AUTOMATIC FLUSH VALVE. E.C. SHALL COORDINATE POWER AND MOUNTING REQUIREMENTS WITH MANUFACTURER SPECIFICATIONS.
- REFER TO DETAIL 1/E0.1 FOR WIRE AND CONDUITS SIZE.
- REFER TO DETAIL 1/E1.1.1 FOR WIRE AND CONDUITS SIZE.

SYMBOL LEGEND



1 ELECTRICAL FLOOR PLAN
1/4" = 1'-0"

NOTE: MONEY ORDER AND LOTTO CORDS TO BE RAN IN SAME GROMMET.
NOTE: THERE SHALL BE NO RECEPTACLES INSTALLED UNDER THE LOTTO SCRATCH UP AREA.

1925 Prospect Ave.
Orlando, FL 32814
P (407) 661-9100
P (407) 661-9101
www.ep.com
Florida Corporate Certificate #AA 100626

4
Chachi & Peterson
Architects Engineers Planners

CLIENT NAME
BLACKFIN PARTNERS INVESTMENTS, INC.
4400 PCA BLVD, SUITE 600
PALM BEACH GARDENS, FL 33410

PROJECT NAME
7-ELEVEN #1795 - OCALA, FL
9000 BLOCK OF SE MARICAMP ROAD
OCALA, FL 34470

SHEET TITLE
ELECTRICAL FLOOR PLAN

RELEASE	PROJECT NO 220055	DATE 12/17/2020	DRAWN SP	CHECKED JS
---------	----------------------	--------------------	-------------	---------------

E1.0