

AIR DEVICE SCHEDULE

MARK	SERVICE	MANUFACTURER	MODEL	STYLE	FACE SIZE	NECK SIZE	FRAME TYPE	NOTES
CD-2	SUPPLY	METAL/AIRE	5700-6-AL	ROUND NECK CEILING DIFFUSER	24 X 24	PER PLAN	LAY-IN	A, B, C, D
CD-3	SUPPLY	METAL/AIRE	5700-1-AL	ROUND NECK CEILING DIFFUSER	12 X 12	PER PLAN	SURFACE	A, B, C, D, E
CD-4	SUPPLY	METAL/AIRE	V4004SP-1	ALUMINUM DOUBLE DEFLECTION WALL SUPPLY GRILLE	21 X 7	18 X 6	DUCT	A, B, D, F
RG-1	RETURN	METAL/AIRE	CC5-6	EGGCRATE CEILING REGISTER	24 X 24	PER PLAN	LAY-IN/GYP	A, B, C, D
RG-2	RETURN	METAL/AIRE	RH-1	EGGCRATE RETURN GRILLE	28 X 28	28 X 26	SURFACE	A, B, C, D
EG-1	EXHAUST	METAL/AIRE	CC5-6	EGGCRATE CEILING REGISTER	24 X 24	PER PLAN	SURFACE	A, B, C, D

GENERAL INFORMATION (ALL UNITS):

- REFERENCE DIVISION OF WORK (DOW) MATRIX FOR PARTY RESPONSIBLE FOR PROVIDING AND/OR INSTALLING UNITS. ALL DIFFUSERS ARE 4-WAY THROW UNLESS NOTED OTHERWISE. FOR ADDITIONAL INFORMATION CONTACT CHAD LITERISKY AT (214) 350-6871 EXT. 2140 WITH BARTOS INDUSTRIES.
- ALL DIFFUSERS ARE 4-WAY THROW UNLESS NOTED OTHERWISE.

NOTES:

- DIFFUSER NECK SIZE SHALL BE SAME AS BRANCH DUCT SIZE UNLESS NOTED OTHERWISE.
- DAMPER AT TAKEOFF TO DEVICE.
- STANDARD OFF-WHITE FINISH.
- PROVIDE NECK FOR DUCT CONNECTION.
- PROVIDE OPPOSED BLADE DAMPER FOR INSTALLATION ABOVE GYP CEILING.
- 2x4x4 FINISH.

MECHANICAL VENTILATION BY ZONE CLASSIFICATION

OCCUPANCY CLASSIFICATION	CONDITION AREA (SQFT)	CFM PER SQFT	MIN CFM BY AREA	OCCUPANT DENSITY (#/1000 SQFT)	OCCUPANTS	CFM PER OCCUPANT	MIN CFM BY OCCUPANT	TOTAL CFM	EFFECTIVENESS CFM (Ez=0.8)	EXHAUST RATE (CFM PER FIXTURE/SQFT)	FIXTURES	MIN EXHAUST CFM
SUPERMARKET	1518	0.66	92	8	13	7.5	98	190	238	0.0	0	0
PREP AREA	278	0.18	51	-	7	7.5	53	104	130	0.0	0	0
SALES (RETAIL)	360	0.12	44	15	6	7.5	45	89	112	0.0	0	0
STORAGE	272	0.12	33	0	0	0.0	0	33	42	0.0	0	0
OFFICE	46	0.06	3	5	1	5.0	5	8	10	0.0	0	0
KITCHEN	137	0.12	17	-	4	7.5	30	48	60	0.7	0	100
DINING	462	0.18	84	70	34	7.5	255	342	428	0.0	0	0
CORRIDOR	102	0.06	7	0	0	0.0	0	7	9	0.0	0	0
RESTROOM - INTERMITTENT	320	0.00	0	0	0	0.0	0	0	0	0.0	5	350
TOTALS	3465	-	331	-	65	-	486	821	1029	-	-	450

AIR BALANCE SCHEDULE

MARK	OUTSIDE AIR CFM	EXHAUST AIR CFM
RTU-1	400	-
RTU-2	350	-
RTU-3	300	-
MAU-1	1000	-
KEF-1	-	-1100
EF-1 & 2	-	-350
TOTAL	2050	-1450

DIFFERENCE: -600

- ### HVAC NOTES
- NOTES APPLY TO ALL MECHANICAL SHEETS.
 - EACH CONTRACTOR IS RESPONSIBLE FOR HAVING THOROUGH KNOWLEDGE OF ALL DRAWINGS AND SPECIFICATIONS AS THEY RELATE TO THIS WORK. NO ADDITIONAL COMPENSATION SHALL BE ALLOWED DUE TO LACK OF THIS KNOWLEDGE.
 - PROVIDE ALL MATERIALS FOR A COMPLETE INSTALLATION IN ALL RESPECTS READY FOR INTENDED USE AND IN STRICT ACCORDANCE WITH STATE AND LOCAL CODES AND MANUFACTURER'S RECOMMENDATIONS.
 - SPRINKLER HEAD AND LIGHTING FIXTURE LOCATIONS TAKE PRECEDENCE OVER DIFFUSER LOCATIONS. COORDINATE WITH ELECTRICAL CONTRACTOR AND FIRE PROTECTION CONTRACTOR.
 - DUCTWORK IDENTIFICATION AND INSTALLATION TO ADHERE TO GOVERNING CODES.
 - DUCT SIZES INDICATED ARE INSIDE CLEAR DIMENSIONS AND REPRESENTATIVE OF THE INSIDE EQUIVALENT FREE AREA REQUIRED TO MAINTAIN THE AIR FLOW SPECIFIED. IF DUCT LING IS REQUIRED, INCREASE DUCT SIZE TO MAINTAIN ORIGINAL INSIDE DIMENSIONS. IF DUCT SIZES NEED TO BE ALTERED FOR SPACE REQUIREMENTS, ENSURE THE ORIGINAL INSIDE EQUIVALENT FREE AREA IS MAINTAINED.
 - TYPICAL BRANCH FITTINGS ARE APPLICABLE THROUGHOUT. FIELD FITTING SHALL BE LIMITED TO THE PERMITTED FOR FRACTIONAL LENGTHS.
 - FINISH ALL DUCT WALL JOINTS WITH BALANCE DAMPERS AT MINIMUM 3" AWAY FROM DAMPERS. PROVIDE ACCESS TO EACH END.
 - ALL CEILING DIFFUSERS ARE 4-WAY PATTERN UNLESS SHOWN OTHERWISE.
 - PERFORM COMPLETE TEST AND BALANCE FOR HVAC SYSTEM. AIR BALANCE SHALL BE WITHIN 5% OF SCHEDULED FLOWS. PROVIDE A COPY TO THE OWNER AND ENGINEER.
 - INSTALL VTR'S AND EXHAUST FANS A MINIMUM OF 10 FT FROM OUTSIDE AIR INTAKE.

HOOD SCHEDULE

MARK	MANUFACTURER	MODEL	LENGTH	CFM	S.P. (IN. WC)	EXHAUST COLLAR SIZE	HOOD TEMP. RATING	CONTROL	WEIGHT
HOOD-1	CAPTIVE AIRE	5430ND-2-PPS-F	11'-2"	1100	-0.783	16"Ø	600° F	DUCT TEMP. SENSOR	821 LBS

NOTES:

- REFERENCE DIVISION OF WORK (DOW) MATRIX FOR PARTY RESPONSIBLE FOR PROVIDING AND/OR INSTALLING UNITS.
- PROVIDE GREASE DRAIN WITH REMOVABLE CUP.
- PROVIDE WITH ANSL R-102 FIRE SUPPRESSION SYSTEM.
- PROVIDE 20"x16" SS BAFFLE WITH HANDLES AND HOOK.

AIR CURTAIN SCHEDULE

MARK	MANUFACTURER	MODEL	LENGTH	CFM	MOTOR HP	V/PH	WEIGHT	CONTROL
AC-1	MARS	STD272-2UA-OB	6'-0"	2578	(2x) 1/2	115/1	120	DOOR SWITCH
AC-2	MARS	STD236-2UA-OB	3'-0"	1370	(1x) 1/2	115/1	60	DOOR SWITCH

NOTES:

- REFERENCE DIVISION OF WORK (DOW) MATRIX FOR PARTY RESPONSIBLE FOR PROVIDING AND/OR INSTALLING UNITS. FOR ADDITIONAL INFORMATION CONTACT TSCD DICKIE (214) 577-8978 WITH DICKIE ENTERPRISES.
- PROVIDE WITH TRANSOM MOUNTING BRACKET.
- PROVIDE WITH MAGNETIC REED SWITCH.
- PROVIDE WITH NOISE REDUCTION PACKAGE (1 PER MOTOR).
- CERTIFIED TO AMCA 211 (AMCA 210 & AMCA 220).

ROOFTOP UNIT SCHEDULE

MARK	MANUFACTURER	MODEL	NOMINAL TONS	SUPPLY FAN		COOLING CAPACITY (MBH)		EER	ING. HEAT CAPACITY @ 30°F (MBH)	COP/ HSPF	AUX. HEATING INPUT (KW)	HEATING SUPPLY AIR TEMP (°F)	ELECTRICAL DATA			WEIGHT	
				CFM	E.S.P. (IN. WC)	OSA (CFM)	TOTAL						SENSIBLE	CFM	MCA		MOCP
RTU-1	CARRIER	30HCO-D12	10	4000	0.60"	400	123.5	93.8	12.4	75.9	3.56	16.5	88.6	208/3	98	100	1390
RTU-2	CARRIER	30HCO-D08	7.5	3000	0.75"	350	92.1	69.4	12.1	75.9	3.56	7.8	85.0	208/3	73	80	1251
RTU-3	CARRIER	30HCO-D06	7.5	3000	0.75"	300	92.1	69.4	12.1	75.9	3.56	7.8	85.0	208/3	73	80	1251

NOTES:

- REFERENCE DIVISION OF WORK (DOW) MATRIX FOR PARTY RESPONSIBLE FOR PROVIDING AND/OR INSTALLING UNITS. FOR ADDITIONAL INFORMATION CONTACT NATIONAL ACCOUNT REPRESENTATIVE BOBBY KIMBRELL AT (512) 287-3366, BOBBY.KIMBRELL@CARRIER.COM.
- PROVIDE FILTER WITH EACH UNIT.
- PROVIDE WITH FULLY MODULATING ECONOMIZER WITH ENTHALPY CONTROL.
- SMOKE DETECTORS TO BE PROVIDED AND INSTALLED BY CARRIER. LOCATE AS SHOWN ON PLAN.
- CONDENSATE TRAP SHALL BE PROVIDED AND INSTALLED BY CONTRACTOR. PROVIDE TRAP OF ADEQUATE DEPTH TO PREVENT STATIC FROM OVERCOMING TRAP SEAL. ROUTE TO NEAREST APPROVED RECEPTOR.
- PROVIDE WITH STANDARD ROOF CURB AND ACCESSORIES.
- OUTDOOR AMBIENT DESIGN TEMPERATURE 99°F.
- SET FAN OPERATION TO CONTINUOUS.
- TEMPERATURE SET POINTS DURING OCCUPIED HOURS: HEATING MODE: 66°F - COOLING MODE: 75°F.
- CONTACT AUTOMATED LOGIC (AL) AT (866) 390-4275 FOR BUILDING ENERGY MANAGEMENT SYSTEM.
- PROVIDE WITH NO FLEX CONTROL MODULE.
- PROVIDE WITH HORN/STROBE ANNUNCIATORS FOR SMOKE DETECTORS.
- PROVIDE WITH SMOKE DETECTOR TEST/RESET STATIONS.
- PROVIDE WITH PRESSURE TRANSDUCER FOR RTU-1.
- PROVIDE WITH CONDENSER COIL MAIL GUARD (UNCOVERED DESIGN).
- PROVIDE WITH PRE-COATED OUTDOOR COILS WITHIN A 5MILE RADIUS OF ANY SALT OR BRACKISH WATER.

EXHAUST FAN SCHEDULE

MARK	MANUFACTURER	MODEL	CFM	E.S.P. (IN. WC)	V/PH	HP	CONTROL	NOTES
EF-1	GREENHECK	G-070-E	210	0.125"	120/1	1/100	OCC SENSOR	A, B, C
EF-2	GREENHECK	G-060-G	140	0.125"	120/1	1/100	OCC SENSOR	A, B, C
KEF-1	CAPTIVE AIRE	DUSHFA	1100	1.30"	230/1	0.75	HOOD CTRL PANEL	C, D

NOTES:

- REFERENCE DIVISION OF WORK (DOW) MATRIX FOR PARTY RESPONSIBLE FOR PROVIDING AND/OR INSTALLING UNITS. FOR ADDITIONAL INFORMATION CONTACT CHAD LITERISKY AT (214) 350-6871 EXT. 2140 WITH BARTOS INDUSTRIES.
- PROVIDE WITH MATCHING ROOF CURB.
- REFERENCE DIVISION OF WORK (DOW) MATRIX FOR PARTY RESPONSIBLE FOR PROVIDING AND/OR INSTALLING UNITS. FOR ADDITIONAL INFORMATION REFER TO HOOD DRAWINGS AND/OR CONTACT AVERY CASH AT (425) 212-5996 WITH CAPTIVE AIRE SYSTEMS.
- REFERENCE DIVISION OF WORK (DOW) MATRIX FOR PARTY RESPONSIBLE FOR PROVIDING AND/OR INSTALLING UNITS. FOR ADDITIONAL INFORMATION REFER TO HOOD DRAWINGS AND/OR CONTACT AVERY CASH AT (425) 212-5996 WITH CAPTIVE AIRE SYSTEMS.

GRAVITY VENTILATOR SCHEDULE

MARK	MANUFACTURER	MODEL	SIZE	NET FREE AREA (SQFT)	DESCRIPTION
GV-1	GREENHECK	GGRS	48	12.83	SPUN ALUMINUM VENTILATOR WITH INSECT SCREEN, BAROMETRIC DAMPER, AND ROOF CURB.

NOTES:

- REFERENCE DIVISION OF WORK (DOW) MATRIX FOR PARTY RESPONSIBLE FOR PROVIDING AND/OR INSTALLING UNITS. FOR ADDITIONAL INFORMATION CONTACT CHAD LITERISKY AT (214) 350-6871 EXT. 2140 WITH BARTOS INDUSTRIES.
- PROVIDE WITH BR-10 BAROMETRIC RELIEF DAMPER (FACTORY FINISH WHITE), DAMPER TRAY, AND GFI ROOF CURB (3/8" MIN LEVEL). PROTECT FROM PAINT OVERSPRAY PER MANUFACTURER INSTALLATION INSTRUCTIONS.
- SET DAMPER START OPEN POSITION TO 0.13" WG (MAXIMUM).

REFRIGERATION REMOTE CONDENSER SCHEDULE

MARK	SERVING	MANUFACTURER	MODEL	V/PH	MCA	MOCP	WEIGHT
CU-1	LAREDO FREEZER	BOHN	BCH002LCACZ	208/3	98	100	173
CU-2	LAREDO COOLER	BOHN	BCH001MCACZ	208/3	98	100	221
CU-3	DUAL CIRCUIT SLURPEE	FBD	FBD-DRC	208/3	12	15	114
CU-4	FROZEN LEMONADE	FBD	FBD-SRC	208/3	1.8	15	105
CU-5	ICE MAKER	HOSHIZAKI	URC-5F	115/1	-	-	60
CU-6	ICE MAKER	HOSHIZAKI	URC-3F	115/1	-	-	60
CU-7	3-DR REACH-IN FREEZER	BOHN	BCH001LBACZ	208/3	15	15	172
CU-8	11-DR VAULT COOLER	BOHN	BCH006MCACZ	208/3	28.3	50	335
CU-9	BEER CAVE	BOHN	BCH005MCACZ	208/3	20.8	30	297
CU-10	GRAB-4-GO COLD CASE	BOHN	BCH005MBACZ	115/1	15	15	167
CU-11	GRAB-4-GO COLD CASE	BOHN	BCH005MBACZ	115/1	15	15	167
CU-12	ICE MAKER	HOSHIZAKI	URC-26J	115/1	-	-	273

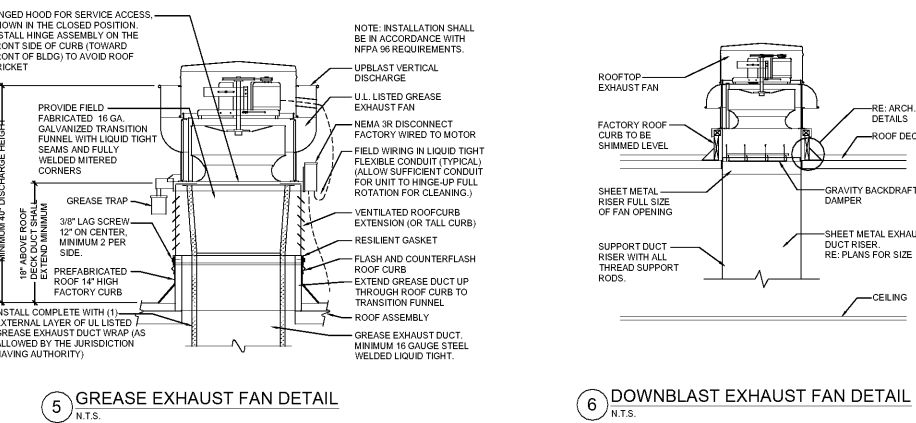
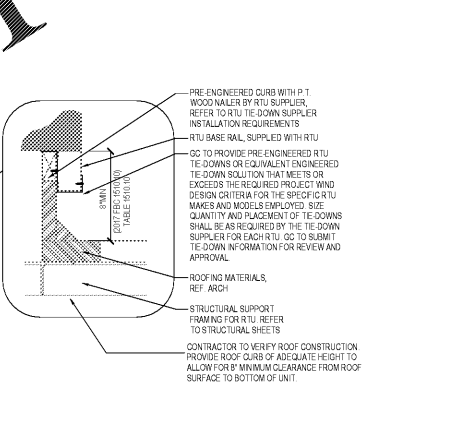
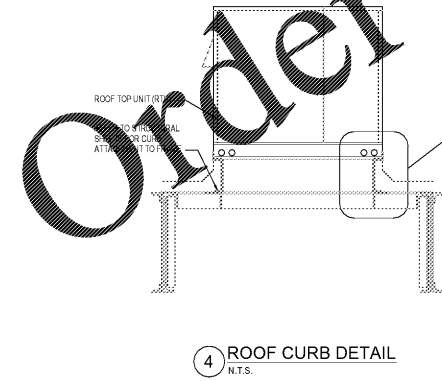
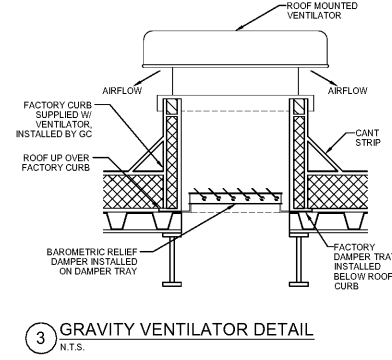
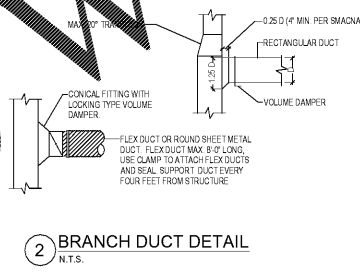
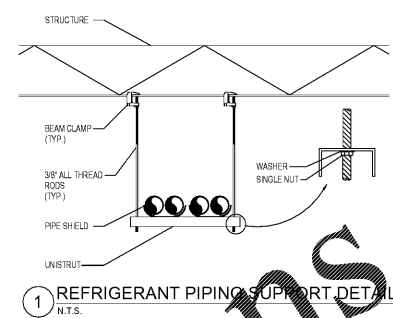
MECHANICAL SYMBOLS

	RECTANGULAR DUCT 18" x 12" WITH 1/2" DEEP (INSIDE CLEAR DIMENSIONS)
	12" DIAMETER ROUND DUCT (INSIDE CLEAR DIMENSIONS)
	SUPPLY DUCT IN SECTION
	RETURN OR EXHAUST DUCT IN SECTION
	ELBOW WITH TURNING VANES
	TEE WITH TURNING VANES
	ROUND (OR OVAL) ELBOW
	SUPPLY AIR DIFFUSER WITH ROUND DUCT
	RETURN OR EXHAUST AIR DIFFUSER WITH ROUND DUCT
	DIFFUSER OR GRILLE TYPE & CFM
	SPACE HUMIDITY/CO2 COMBO SENSOR
	TEMPERATURE SENSOR
	SMOKE DETECTOR
	SMOKE DETECTOR TEST/RESET STATION
	HORN & STROBE ANNUNCIATOR
	PRESSURE TRANSDUCER
	BALANCE DAMPER

COMMISSIONING AND TAB REQUIRED AND A REPORT GENERATED USING 74 LEVELS COMMISSIONING REPORT TEMPLATE. PROVIDE A COPY TO THE OWNER AND ENGINEER. IF HVAC SYSTEM AIRFLOW CANNOT BE BALANCED PER PLANS, CONTACT ENGINEER OF RECORD FOR RESOLUTION.

REF MESH 1 SHEET FOR ADDITIONAL INFORMATION REGARDING THE BUILDING ENERGY MANAGEMENT SYSTEM CONTROLS. CONTACT AUTOMATED LOGIC (AL) AT (866) 390-4275 UPON AWARD OF CONTRACT TO OBTAIN LIST OF CERTIFIED EMS INSTALLERS. DURING CONSTRUCTION AT 2 WEEKS PRIOR TO BUILDING TURNOVER, CONTACT AL TO COORDINATE DELIVERY OF EMS PANEL. AFTER INSTALLATION OF EMS PANEL INCLUDING CONNECTION OF CABLES, CONTACT AL FOR STARTUP OF EMS PANEL. START-UP TO BE DONE 2-3 DAYS PRIOR TO BUILDING TURNOVER.

LAY-IN CEILING NOTE: SUPPLY AIR DEVICES SHALL BE INDICATED AS 3-WAY AIR DEVICES WHEN LOCATED WITHIN A 10'-0" RADIUS OF THE OPEN AIR SANDWICH CASE.



- ### KITCHEN EXHAUST HOOD SYSTEM NOTES
- GREASE DUCT MATERIALS:
- ALL TYPE-I GREASE EXHAUST DUCTS SHALL BE NFPA 96 APPROVED UL LISTED DOUBLE WALL FACTORY BUILT PER CAPTIVE AIRE SUBMITTAL DRAWINGS, WITH PRIOR APPROVAL FROM OWNER AND ENGINEER OF RECORD. CONTRACTOR MAY OPT FOR 16 GA. WELDED BLACK IRON, EXTERNALLY WELDED WITH LIQUID TIGHT JOINTS, SEAMS, AND SMOOTH RADIUS ELBOWS AND TRANSITIONS.
- GREASE DUCT SLOPE:
- WHERE APPLICABLE, PITCH ALL HORIZONTAL GREASE UNIFORMLY BACK TOWARDS THE RESPECTIVE HOOD OR APPLIANCE AT A MINIMUM 1/4" PER FOOT (NOT TO EXCEED 75'-0").
- GREASE DUCT CLEANOUTS:
- PROVIDE CLEANOUTS/ACCESS PANELS AT EACH CHANGE OF DIRECTION AS REQUIRED BY NFPA 96.
- ROOF CURBS:
- ROOF CURBS FOR EXHAUST FANS SHALL BE FACTORY FABRICATED OF FULL WELDED STEEL CONSTRUCTION WITH WOOD NAELER, AND FURNISHED WITH THE HOOD AND FAN PACKAGE. VERIFY REQUIREMENTS FOR THE ROOF CURBS WITH THE EQUIPMENT SUPPLIER. THE GENERAL CONTRACTOR SHALL FLASH ROOF CURBS AND SHIM BEAD LEVEL. COORDINATE EXACT SIZE AND LOCATION OF ROOF OPENINGS WITH THE STRUCTURAL FRAMING. CUTTING OF STRUCTURAL MEMBERS IS NOT PERMITTED. FAN SHALL DISCHARGE AT MINIMUM 6' CLEARANCE ABOVE ROOF LINE PER NFPA 96.
- EXHAUST HOOD:
- ALL MATERIALS INSTALLED WITHIN 10' OF THE HOOD SHALL BE NON-COMBUSTIBLE. FIRE SUPPRESSION CABINET TO BE FURNISHED WITH THE HOOD PACKAGE, AND INSTALLED BY THE KITCHEN EQUIPMENT CONTRACTOR.
- MANUAL ACTIVATION STATION:
- PULL STATION FOR KITCHEN HOOD FIRE SUPPRESSION SYSTEM ACTIVATION AND GAS SUPPLY SHUT-OFF TO BE PROVIDED BY THE FIRE SUPPRESSION SUBCONTRACTOR. GENERAL CONTRACTOR SHALL PROVIDE RECEIVED FUNCTION ROD AND CONDUIT FOR PULL STATION linkage. FIRE SUPPRESSION SUBCONTRACTOR SHALL VERIFY APPROVED LOCATION WITH THE LOCAL AUTHORITY AND COORDINATE THE COMPLETE INSTALLATION WITH ALL OTHER TRADES.
- EQUIPMENT RELAYS:
- TYPE I HOOD SYSTEM (KITCHEN EXHAUST FAN, MAKE-UP AIR UNIT, AND RTU-1) SHALL BE INTERLOCKED WITH COOKING APPLIANCES TO AUTOMATICALLY ACTIVATE SOURCES OF EXHAUST AND MAKE-UP AIR WHENEVER COOKING OPERATIONS OCCUR.

Order Plans

@ WWW.IDLINE.COM

1925 Prospect Ave.
Orlando, FL 32814
P (407) 661-9100
P (407) 661-9101
www.ep-am
Florida Corporate Certificate #AA 0066256

4
Cuhaci & Peterson
Architects Engineers Planners

CLIENT NAME
BLACKFIN PARTNERS INVESTMENTS, INC.
9000 BLOCK OF SE MARICAMP ROAD
PALM BEACH GARDENS, FL 33410

PROJECT NAME
7-ELEVEN #1795 - OCALA, FL
9000 BLOCK OF SE MARICAMP ROAD
OCALA, FL 34470

SHEET TITLE
MECHANICAL SCHEDULES & DETAILS

STATE OF FLORIDA
LICENSE
No. 78474
JOSE J. DIAZ-VELAZQUEZ
PROFESSIONAL ENGINEER

PROJECT NO. 220085
DATE 12/17/2020
DRAWN FD
CHECKED JD

M0.1