

GENERAL CONDITIONS:

- THE FOLLOWING NOTES SHALL APPLY TO ALL STRUCTURAL DRAWINGS.
- ALL DESIGN AND CONSTRUCTION SHALL BE BASED ON AND IN ACCORDANCE WITH THE 2017 FLORIDA BUILDING CODE, 8TH EDITION.
- THE GENERAL CONTRACTOR SHALL VERIFY ALL DIMENSIONS AND SITE CONDITIONS AND NOTIFY THE ARCHITECT PRIOR TO FABRICATION AND CONSTRUCTION. FOR DIMENSIONS NOT SHOWN ON THE STRUCTURAL DRAWINGS, SEE THE ARCHITECTURAL DRAWINGS.
- IF MATERIAL QUANTITIES, STRENGTHS OR SIZES INDICATED BY THE DRAWINGS OR SPECIFICATIONS ARE NOT IN AGREEMENT WITH THESE NOTES, THE BETTER QUALITY AND/OR QUANTITY, STRENGTH OR NOTED SHALL BE PROVIDED.
- IT IS THE SOLE RESPONSIBILITY OF THE CONTRACTOR TO DETERMINE ERECTION PROCEDURE AND SEQUENCE TO ENSURE THE SAFETY OF THE STRUCTURE AND ITS COMPONENT PARTS DURING ERECTION. THIS INCLUDES, BUT IS NOT LIMITED TO, THE ADDITION OF TEMPORARY WHATEVER BRACING, GUYS, TIE-DOWNS OR SHORING MAY BE NECESSARY. SUCH MATERIAL SHALL BE REMOVED AND SHALL REMAIN THE PROPERTY OF THE CONTRACTOR AFTER THE COMPLETION OF THE PROJECT.
- IT SHALL BE THE SOLE RESPONSIBILITY OF THE CONTRACTOR FOR INITIATING, MAINTAINING AND SUPERVISING ALL SAFETY PROCEDURES. THE STRUCTURAL ENGINEER OF RECORD IS NOT RESPONSIBLE FOR MEANS AND METHODS OF CONSTRUCTION OR FOR RELATED SAFETY PROCEDURES.
- THE STRUCTURAL DRAWINGS ARE ONE DISCIPLINE OF THE CONTRACT DOCUMENTS AND DO NOT BY THEMSELVES CONTAIN ALL THE INFORMATION REQUIRED TO PROPERLY COMPLETE THE PROJECT STRUCTURE. THE GENERAL CONTRACTOR SHALL REFER TO THE ARCHITECTURAL, MECHANICAL, ELECTRICAL AND PLUMBING DRAWINGS AND COORDINATE THE INFORMATION INDICATED IN THESE CONSTRUCTION DOCUMENTS WITH THE STRUCTURAL DRAWINGS TO PROPERLY CONSTRUCT THE PROJECT.
- ALL DETAILS, SECTIONS AND NOTES INDICATED ON THE CONSTRUCTION DOCUMENTS ARE INTENDED TO BE TYPICAL AND SHALL APPLY TO SIMILAR SITUATIONS ELSEWHERE UNLESS OTHERWISE SHOWN.
- SPECIALTY ENGINEERED PRODUCTS
 - THE GENERAL CONTRACTOR IS RESPONSIBLE TO COORDINATE THE PROPER SUBMISSION OF SHOP DRAWINGS FOR SPECIALTY ENGINEERED PRODUCTS WHICH SHALL BE SIGNED AND SEALED BY A LICENSED PROFESSIONAL ENGINEER IN THE STATE WHERE THE PROJECT IS LOCATED. CONTRACTOR'S RESPONSIBILITY TO ASSURE THAT THE SPECIALTY ENGINEERED SHOP DRAWINGS ARE SUBMITTED IN A TIMELY MANNER SO AS TO ALLOW REVISIONS AND RESUBMISSIONS AS REQUIRED. ALL SPECIALTY ENGINEERED PRODUCTS SHALL BE DESIGNED FOR THE APPROPRIATE GRAVITY LOADS AND WIND LOADS INCLUDING UPLIFT AND LATERAL LOADS. INTERIOR SPECIALTY PRODUCTS SHALL BE DESIGNED FOR LATERAL LOADS TO ASSURE STABILITY. SPECIALTY ENGINEERED PRODUCTS SHALL BE, BUT ARE NOT LIMITED TO, THE FOLLOWING:
 - MISCELLANEOUS STEEL
 - LADDERS
 - HANDRAILS
 - CLADDING SYSTEMS
 - DESIGN LOADS:
 - DESIGN LIVE LOAD FOR FLOOR: 100 PSF
 - DESIGN WIND LOAD:
 - ULTIMATE DESIGN WIND SPEED (3 SECOND GUST), $V_{ult} = 139$ MPH.
 - NOMINAL DESIGN WIND SPEED (3 SECOND GUST), $V_{nd} = 108$ MPH.
 - RISK CATEGORY: II
 - WIND EXPOSURE CATEGORY: C
 - WIND DESIGN PRESSURE: 25.4 PSF
 - WIND-BORNE DEBRIS REGION (WITHIN HURRICANE-PRONE REGIONS)
 - WITHIN 1 MILE OF THE COASTAL MEAN HIGH WATER LINE WHERE V_{ult} IS 130 MPH OR GREATER; OR
 - IN AREAS WHERE V_{ult} IS 140 MPH OR GREATER.
 - SHOP DRAWINGS
 - THE CONTRACTOR SHALL SUBMIT, AS REQUIRED, PRINTS OF SHOP DRAWINGS FOR ALL FABRICATED MATERIALS TO ARCHITECT FOR REVIEW. REPRODUCTION OF CONTRACT DRAWINGS FOR SHOP DRAWINGS WILL NOT BE PERMITTED.
 - REVIEW OF SHOP DRAWINGS BY THE ARCHITECT/ENGINEER DOES NOT RELIEVE THE CONTRACTOR OF THE SOLE RESPONSIBILITY FOR ERRORS AND OMISSIONS ASSOCIATED WITH THE PREPARATION OF THESE SHOP DRAWINGS.
 - SHOP DRAWINGS REQUIRING A SPECIAL ENGINEERING DESIGN BY THE FABRICATOR SHALL BE STAMPED BY A PROFESSIONAL ENGINEER OF RECORD IN THE STATE OF THE PROJECT LOCATION BEFORE SUBMITTING FOR REVIEW BY THE ARCHITECT/ENGINEER. THESE DRAWINGS SHALL BE AVAILABLE AT THE JOB SITE DURING TIMES OF OBSERVATIONS.
 - THE FOLLOWING SHOP DRAWINGS SHALL BE SUBMITTED:
 - CONCRETE MIX DESIGNS
 - CONCRETE REINFORCING STEEL AND WELDED WIRE FABRIC
 - CONCRETE MASONRY UNIT SUBMITTALS AND OTHER MASONRY ACCESSORIES

MASONRY WALL CONSTRUCTION:

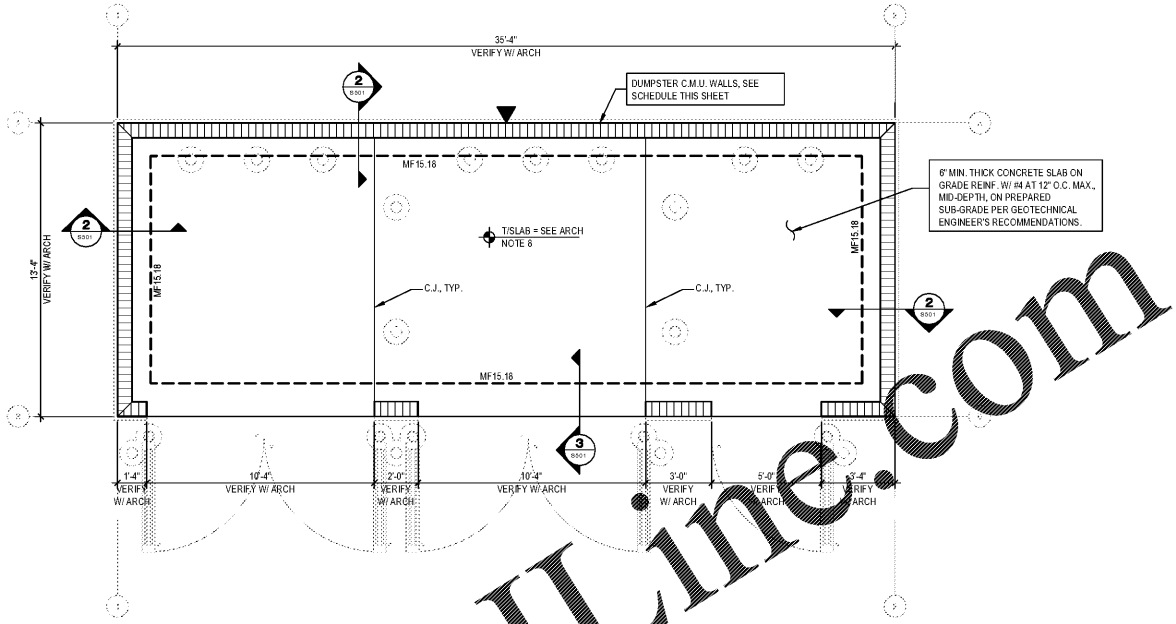
- HOLLOW LOAD BEARING UNITS SHALL BE NORMAL WEIGHT, GRADE N, TYPE 2, CONFORMING TO ASTM C90, WITH A MINIMUM NET COMPRESSIVE STRENGTH OF 2000 PSI ($f_m = 1500$ PSI).
- MORTAR SHALL BE TYPE M OR S, CONFORMING TO ASTM C270.
- COARSE GROUT SHALL CONFORM TO ASTM C476 WITH A MAX. AGGREGATE SIZE OF 3/8" AND A MINIMUM COMPRESSIVE STRENGTH OF 3,000 PSI W/ SLUMP OF 8-11 INCHES.
- VERTICAL REINFORCEMENT SHALL BE AS NOTED ON THE DRAWINGS. FILL ALL CELLS CONTAINING REINFORCEMENT WITH COARSE GROUT.
- VERTICAL REINFORCEMENT SHALL BE HELD IN POSITION AT THE TOP AND BOTTOM AND MAXIMUM SPACING OF 8'-0". REINFORCEMENT SHALL BE PLACED IN THE CENTER OF THE MASONRY CELL UNLESS OTHERWISE NOTED. SEE TYPICAL GROUTING DETAILS FOR ADDITIONAL INFORMATION.
- REINFORCING STEEL SHALL BE LAPPED MINIMUM 18" IN LENGTH.
- HORIZONTAL WALL REINFORCING SHALL BE STANDARD LAPPING TYPE UNLESS OTHERWISE NOTED. @ GA. NOT DIPPED GALVANIZED AT 18" O.C. VERTICALLY UNLESS SHOWN OTHERWISE ON THE DRAWINGS.
- SPLICED WIRE REINFORCEMENT SHALL BE LAPPED AT LEAST 18" AND CONTAIN AT LEAST ONE CROSS WIRE OF EACH PIECE OF REINFORCEMENT WITHIN THE LAP. USE STANDARD "S" AND "L" SHAPED PIECES AT INTERSECTIONS AND CORNERS.
- WHEN A FOUNDATION DOWEL DOES NOT LINE UP WITH A VERTICAL CORE, IT SHALL NOT BE SLOPED MORE THAN ONE HORIZONTAL IN SIX VERTICALS. DOWELS SHALL BE GROUTED INTO A CORE IN VERTICAL ALIGNMENT, EVEN THOUGH IT IS IN AN ADJACENT CELL TO THE VERTICAL WALL REINFORCEMENT.

FOUNDATION:

- FOUNDATION DESIGN IS BASED ON AN ALLOWABLE SOIL BEARING PRESSURE OF 200 PSF FOR A CONVENTIONALLY REINFORCED SHALLOW FOUNDATION AS RECOMMENDED IN THE GEOTECHNICAL REPORT PREPARED BY ANICUS ENGINEERS, LLC DATED OCTOBER 26, 2020, PROJECT NO. 01-4335-20.
- THE SITE SHALL BE PREPARED UNIFORM IN ACCORDANCE WITH CIVIL DRAWINGS, SPECIFICATIONS, SOILS REPORT AND THE ALLOWABLE BEARING PRESSURE.
- ALL EXCAVATIONS AND BUILDING PADS SHALL BE INSPECTED BY A QUALIFIED GEOTECHNICAL ENGINEER TO VERIFY THE DESIGN ASSUMPTIONS AND REPORT ADVERSE CONDITIONS.
- WHERE FILL IS REQUIRED, IT SHALL BE PLACED IN ACCORDANCE WITH INSTRUCTIONS OF A QUALIFIED GEOTECHNICAL ENGINEER TO MAINTAIN DESIGN BEARING PRESSURE.
- FOOTING ELEVATIONS GIVEN ARE FOR THE PURPOSE OF DESIGN. SOIL BELOW FOOTING NOT MEETING DESIGN BEARING PRESSURE SHALL BE EXCAVATED TO A DEPTH OF VERIFIABLE DESIGN PRESSURE AND BACKFILLED PER SOIL REPORT RECOMMENDATIONS TO LEVEL OF FOUNDATION BEARING. THIS SHALL BE APPROVED BY A QUALIFIED GEOTECHNICAL ENGINEER.
- ALL EXCAVATION SHALL BE KEPT DRY. EXCAVATE TO DEPTHS AND DIMENSIONS INDICATED. TAKE EVERY PRECAUTION TO GUARD AGAINST ANY MOVEMENT OR SETTLEMENT OF ADJACENT STRUCTURES, UTILITIES, PIPING, ETC.
- PROVIDE ANY BRACING OR SHORING NECESSARY TO AVOID SETTLEMENT OR DISPLACEMENT OF EXISTING FOUNDATION OR STRUCTURES.
- BACKFILL AGAINST WALLS SHALL BE PLACED EVENLY EACH SIDE UNLESS SHORING IS PROVIDED BY THE CONTRACTOR. SHORING SHALL BE THE SOLE RESPONSIBILITY OF THE CONTRACTOR AND SHALL REMAIN IN PLACE UNTIL STRUCTURAL ELEMENT BRACING THE WALL ARE IN PLACE AND HAVE REACHED FULL DESIGN STRENGTH.

CONCRETE:

- CONCRETE MEMBERS TO HAVE THE FOLLOWING MINIMUM COMPRESSIVE STRENGTHS AT 28 DAYS:
 - FOUNDATIONS, SLAB ON GRADE: 3000 PSI
- ALL CONCRETE SHALL BE READY MIX AND MEET THE FOLLOWING REQUIREMENTS:
 - CONCRETE SLUMP SHALL BE 4 INCHES PLUS OR MINUS 1".
 - CONCRETE SHALL HAVE 2 TO 4 PERCENT AIR ENTRAINMENT.
 - ALL CONCRETE TO HAVE MAXIMUM WATER/CEMENT RATIO OF 0.54.
- CONCRETE MIX SHALL BE IN ACCORDANCE WITH THE 2010 EDITION OF ACI 301 CHAPTER 5, METHOD 1 OR METHOD 3. CONTRACTOR SHALL SUBMIT BACKUP DATA PER CHAPTER 5 SECTION 5.3 OF ACI 318 LATEST EDITION.
- ALL REINFORCING STEEL SHALL BE NEW DOMESTIC DEFORMED BILLET STEEL CONFORMING TO ASTM A615 GRADE 60. SUBMIT ALL REINFORCING STEEL SHOP DRAWINGS FOR APPROVAL PRIOR TO ANY FABRICATION.
- CONCRETE COVER FOR REINFORCING STEEL SHALL BE AS REQUIRED BY ACI SPECIFICATIONS.
- WELDED WIRE FABRIC SHALL CONFORM WITH ASTM A 1064. WELDED WIRE FABRIC SHALL BE LAPPED AT LEAST 12 INCHES UNLESS NOTED OTHERWISE.
- LAP SPICE FOR BARS, U.N.C.: 31" FOR #4 BARS, 39" FOR #5 BARS, 47" FOR #6 BARS.
- PROVIDE ACI STANDARD HOOKS UNLESS NOTED OTHERWISE ON DRAWINGS.
- ALL CONCRETE WORK SHALL CONFORM TO ACI 318-14 LATEST EDITION "THE BUILDING CODE REQUIREMENTS FOR REINFORCED CONCRETE STRUCTURES", AND ACI 301 "SPECIFICATIONS FOR STRUCTURAL CONCRETE FOR BUILDINGS."
- ALL CONCRETE DETAILS SHALL CONFORM TO ACI 318-05 EDITION "MANUAL OF STANDARD PRACTICE FOR DETAILING REINFORCED CONCRETE STRUCTURES" UNLESS NOTED OTHERWISE ON THE DRAWINGS.
- CONTRACTOR SHALL REFER TO ARCHITECTURAL AND MECHANICAL DRAWINGS FOR LOCATIONS AND SIZES OF SLEEVES, OPENINGS, EMBEDDED ITEMS, SLAB RECESSES, SLOPES, ECT. THESE ITEMS SHALL BE COORDINATED WITH OTHER TRADES AND INSTALLED PRIOR TO CONCRETE PLACEMENT.
- CONTRACTOR SHALL VERIFY ANCHOR BOLT SIZES AND LOCATIONS PRIOR TO CONCRETE PLACEMENT.
- BAR LENGTHS PROVIDED ON DRAWINGS DO NOT INCLUDE HOOK LENGTH. HOOKS SHALL BE PROVIDED AT TOP BARS AT BEAM ENDS AND SLAB EDGES.
- CONTRACTOR SHALL PROVIDE CHAIRS, BOLSTERS, SPACERS, ECT. AS REQUIRED TO SECURE SUPPORT REINFORCEMENT. SUPPORT ITEMS ON EXPOSED CONCRETE SHALL BE PLASTIC. SUPPORT REINFORCEMENT, TIPPED OR STAINLESS STEEL, IN HIGHLY CORROSIVE ENVIRONMENTS, SUPPORT ITEM SHALL BE PLASTIC.
- THE CONTRACTOR SHALL SEAL ALL HORIZONTAL JOINTS IN CONCRETE SLAB ON GRADE WITH A CRACK SUPPRESSION KIT SUCH AS LATICRETE APPROVED EQUAL.
- A COPY OF THE REFERENCED MANUFACTURER'S ACI APPROVED TEST REPORT SHALL BE KEPT BY THE CONTRACTOR ON SITE.
- TESTING ALL THE CONCRETE TEST RESULTS SHALL BE SUBMITTED BY THE TESTING AGENCY DIRECTED TO THE ENGINEER OF RECORD.



1 DUMPSTER PLAN
1/4" = 1'-0"

FOOTING SCHEDULE

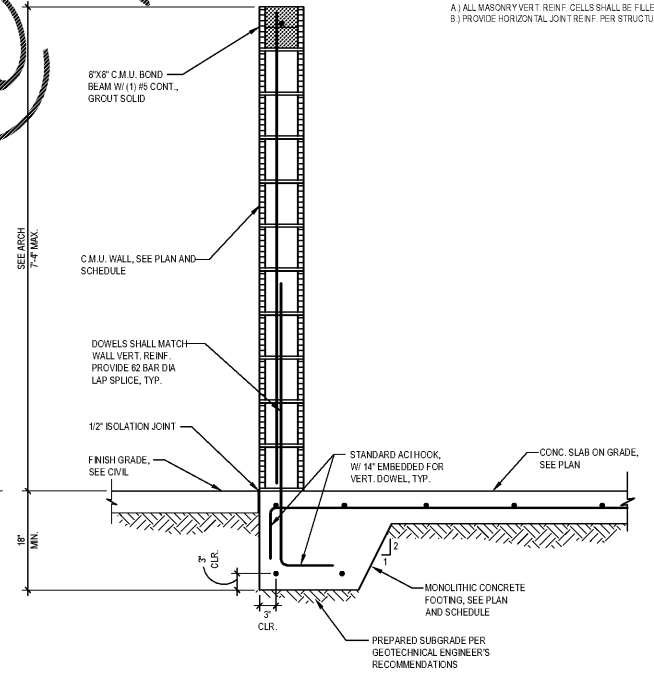
MARK	SIZE	REINFORCING
MF 15.18	1'-4" X 18" MIN. THICK X CONT.	(2) #5 CONT. BOTTOM

- FOUNDATION NOTES:**
- ELEVATION = +0'-0" IS FOR REFERENCE ONLY. SEE CIVIL FOR NAID ELEVATION.
 - ▣ DENOTES MASONRY WALLS. SEE SCHEDULE THIS SHEET.
 - MF-# DENOTES MONOLITHIC CONCRETE FOOTING. SEE SCHEDULE THIS SHEET. BOTTOM OF ALL FOOTINGS SHALL BE 2" MIN. BELOW LOWEST ADJACENT FINISH GRADE. VERIFY ALL TOP AND BOTTOM OF FOOTING ELEVATIONS W/ CIVIL AND MEP PRIOR TO FABRICATION AND CONSTRUCTION.
 - ▲ DENOTES C.M.U. WALL CONTROL JOINT LOCATION. SEE DETAIL ON S201.
 - C.J. DENOTES SLAB ON GRADE CONTROL JOINT. SEE DETAIL ON S201.
 - SEE ARCH FOR DIMENSIONS NOT SHOWN.
 - SEE ARCH AND MEP FOR ALL SLEEVES, PIPES, INSERTS AND EMBEDDED ITEMS.
 - SEE ARCH AND MEP FOR SLAB ON GRADE, SLOPES AND RECESSES.

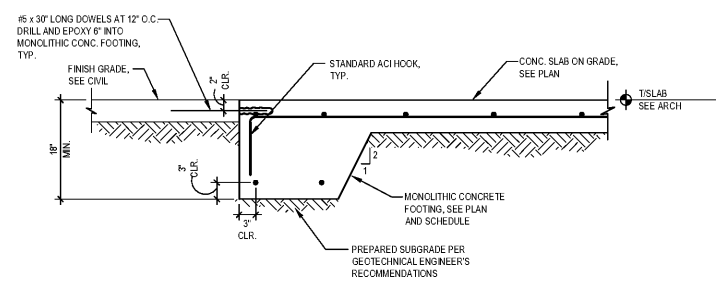
MASONRY WALL SCHEDULE

LABEL	TYPE	VERT. REINF. AT FULL HEIGHT SECTIONS	VERT. REINF. BELOW AND ABOVE OPENINGS	JAMBS EA. SIDE OF OPENING	ENDS AND CORNERS
DUMPSTER	8" C.M.U.	#5 AT 40" O.C. (CENTERED)	N/A	UNO. 8" X 18" FULL HEIGHT PER W/ #5 AT 8" O.C. (CENTERED)	PER S201

- MASONRY WALL NOTES:**
- ALL MASONRY VERT. REINF. CELLS SHALL BE FILLED W/ 3000 PSI GROUT MIX, TYP.
 - PROVIDE HORIZONTAL JOINT REINF. PER STRUCTURAL NOTES ON S201.



SECTION 2
3/4" = 1'-0" S501



SECTION 3
3/4" = 1'-0" S501

HIGGENBOTHAM
Structural Engineers
3222 Centre Drive, Suite F
Orlando, Florida 32833
Phone: 407 288 1787
Fax: 407 288 2281
FLORIDA C.A. NO. 26850

1925 Prospect Ave.
Orlando, FL 32814
P (407) 661-9100
P (407) 661-9101
www.cjg.com
Florida Corporate Certificate #AA 0000256

Cuhaci & Peterson
Architects Engineers Planners

CLIENT NAME
BLACKFIN PARTNERS INVESTMENTS, INC.
4400 PGA BLVD, SUITE 800
PALM BEACH GARDENS, FL 33410

PROJECT NAME
7-ELEVEN #41795 - OCALA, FL
8000 BLOCK OF SE MARICAMP ROAD
OCALA, FL 34470

SHEET TITLE
DUMPSTER ENCLOSURE

JUAN B. CANO, P.E.
FLORIDA LICENSE NO. 69377

PROJECT NO.	220085
DATE	12/17/2020
DRAWN	REE
CHECKED	JEC

S501