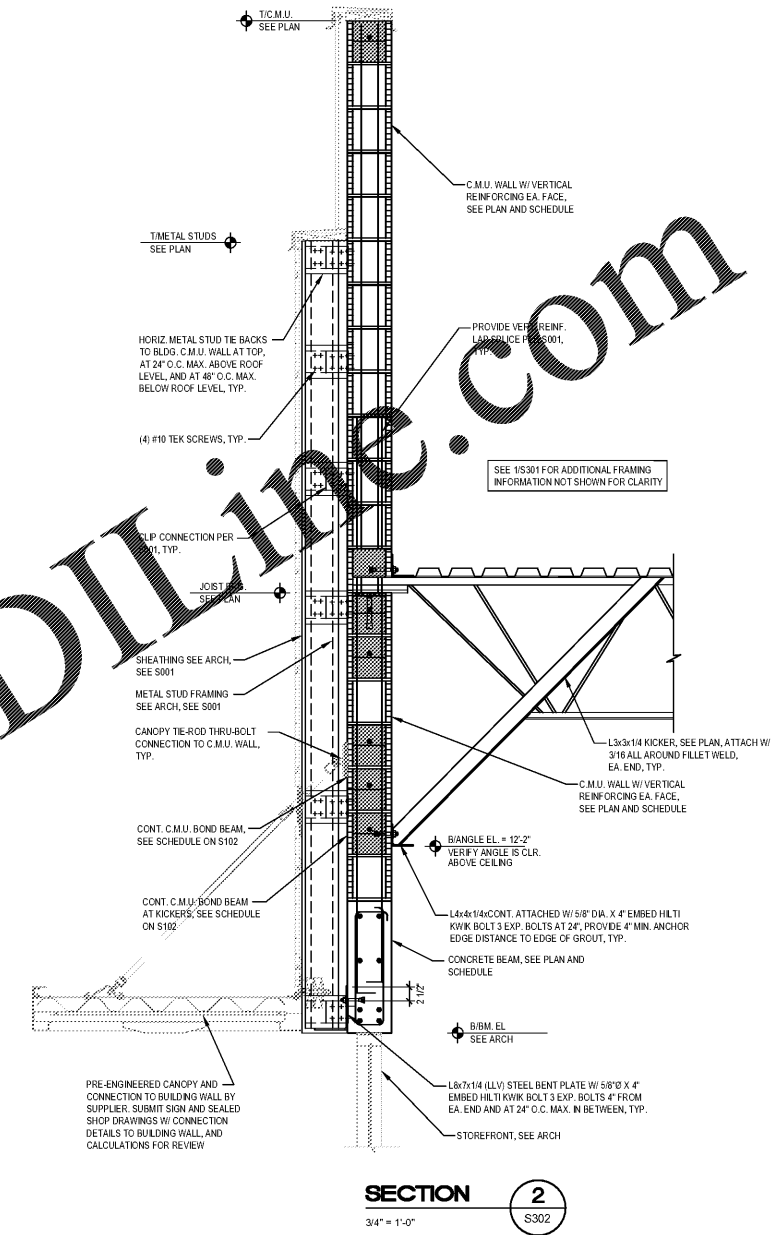
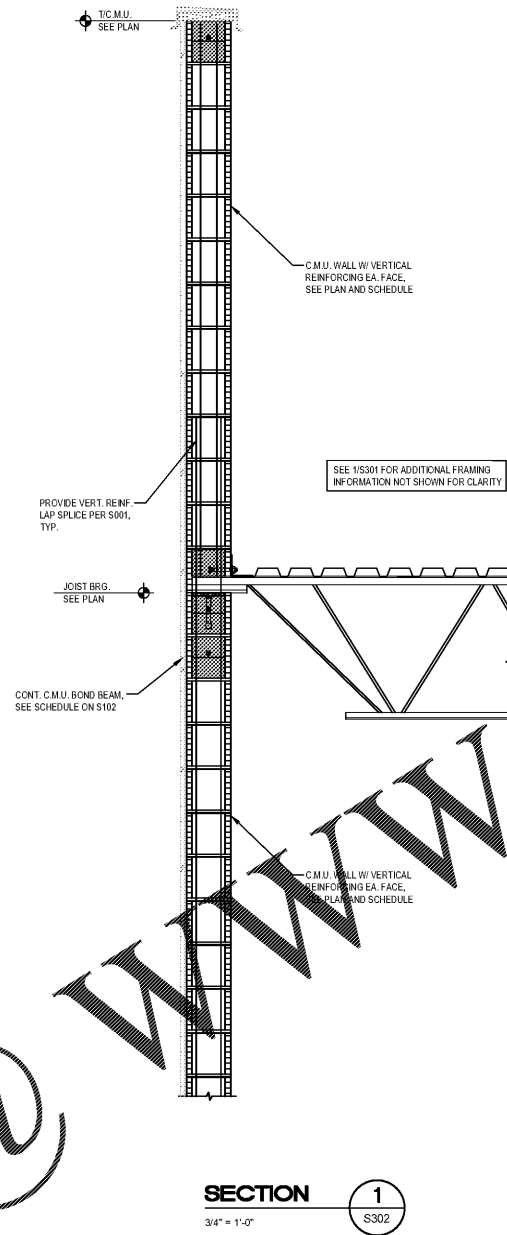


Order Plans @ [www.LDILINE.com](http://www.LDILINE.com)



**HIGGENBOTHAM**  
Structural Engineers  
3222 Corrine Drive, Suite F  
Orlando, Florida 32813  
Phone: 407 298 1787  
Fax: 407 298 2281  
FLORIDA, CA, NO. 28950

PROJECT NO.	2200355
DATE	12/17/2020
DRAWN	REE
CHECKED	JSC

RELEASE	

JUAN B. CANO, P.E.  
FLORIDA LICENSE NO. 69377

PROJECT NAME  
**7-ELEVEN #1795 - OCALA, FL**  
9000 BLOCK OF SE MARICAMP ROAD  
OCALA, FL 34470

SHEET TITLE  
**DETAILS**

CLIENT NAME  
**BLACKFIN PARTNERS INVESTMENTS, INC.**  
4440 PCA BLVD, SUITE 600  
PALM BEACH GARDENS, FL 33410

**Cuhaci & Peterson**  
Architects Engineers Planners

1925 Prospect Av.  
Orlando, FL 32814  
P (407) 661-9100  
P (407) 661-9101  
[www.ep.com](http://www.ep.com)  
Florida Corporate Certificate #AA-C006526

S302