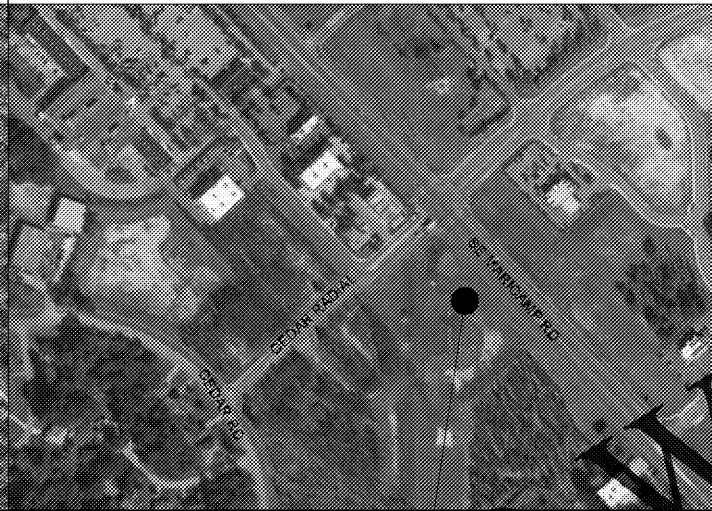


7-ELEVEN

NEW STORE
STORE NO. 41795
9000 BLOCK OF SE MARICAMP RD
OCALA, FL 34470
PROTO: 09-01-2020 (2020-01)

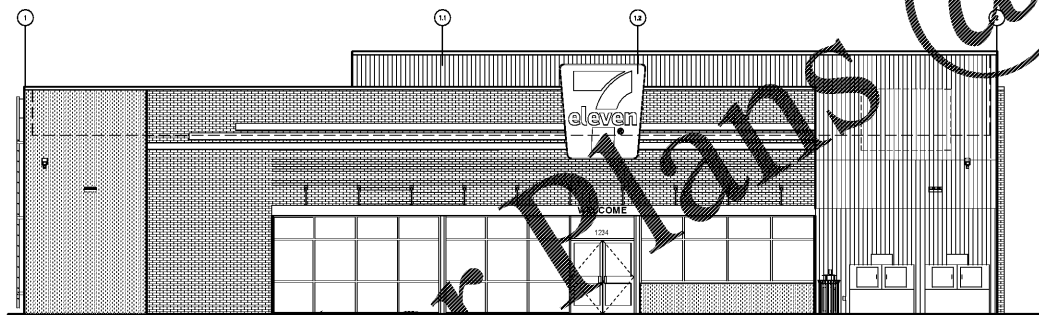
VICINITY MAP

SITE LOCATION MAP



STORE LOCATION

STORE LOCATION



DEFERRED SUBMITTALS

THE ITEMS BELOW SHALL BE FURNISHED BY THE CONTRACTOR AS DEFERRED SUBMITTALS

- COOLER/FREEZER ENGINEERED SHOP DRAWINGS & PRODUCT LITERATURE
- ENGINEERED STEEL FABRICATION SHOP DRAWINGS
- WELD PROCEDURE SPECIFICATIONS & WELDER PERFORMANCE QUALIFICATIONS IN ACCORDANCE WITH THE AMERICAN WELDING SOCIETY.
- STOREFRONT SYSTEM SHOP DRAWINGS AND PRODUCT LITERATURE.
- PRE-ENGINEERED ROOFTOP EQUIPMENT STAND SHOP DRAWINGS AND PRODUCT LITERATURE.
- LIGHT GAUGE METAL FRAMING ENGINEERED SHOP DRAWINGS AND LITERATURE.
- HOLLOW METAL DOOR AND FRAME LITERATURE.
- ROOFING SHOP DRAWINGS
- PRE-ENGINEERED ALUMINUM CANOPY SHOP DRAWINGS
- PRODUCT FASTENING / INSTALLATION INSTRUCTIONS AS PREVIOUSLY APPROVED UNDER THE AUSPICES OF FLORIDA PRODUCT APPROVAL (FPA) AND / OR MIAMI DADE NOTICE OF ACCEPTANCE (NOA) ALONG WITH IDENTIFYING COVER AND ASSOCIATED LITERATURE. (SEE PRODUCT APPROVALS ON SHEET A6.0)

NOTE: THIS LIST MAY NOT BE COMPLETE. GENERAL CONTRACTOR TO SEE ACCOMPANYING ARCHITECT'S CONSULTANT DRAWINGS FOR FURTHER REQUIREMENTS WHICH MAY BE LISTED THEREIN.

SUBMITTALS (GENERAL)

- SUBMITTALS SHALL BE REVIEWED BY GC PRIOR TO SUBMITTAL TO DESIGN PROFESSIONAL. THEY MUST BEAR A STAMP INDICATING THE GC'S COMPANY NAME AND THE WORDS "REVIEWED" OR "APPROVED".
- ALL SUCH SUBMITTALS SHALL BE MARKED TO IDENTIFY PROJECT, AND TO INDICATE PRODUCT AS IDENTIFIED IN CONTRACT DOCUMENTS (I.E. RTU #2).
- ANY SUBMITTAL CONTAINING MULTIPLE PRODUCTS AND/OR MULTIPLE OPTIONS MUST HAVE EXACT PRODUCTS / OPTIONS HIGHLIGHTED, CIRCLED OR OTHERWISE MARKED TO INDICATE THE EXACT PRODUCT / OPTIONS TO BE INSTALLED.
- DESIGN PROFESSIONAL WILL REVIEW SUBMITTALS AND STAMP WITH WORDS INCLUDING "REVIEWED" OR "APPROVED"
- AHJ HAS INDICATED THAT ANY SUBMITTAL THEY REQUIRE NOT MEETING THE CRITERIA STATED ABOVE WILL BE REJECTED.
- WITH REGARD TO ITEMS WITHIN THE AUSPICES OF FPA/NOA, THE DESIGN PROFESSIONAL HAS CHOSEN PRODUCTS / SYSTEMS WHICH MEET CODE REQUIREMENTS AND DESIGN INTENT. IF THE GENERAL CONTRACTOR PROPOSES SUBSTITUTIONS, HE MUST PROVIDE ALL SUPPORTING DOCUMENTATION AND SUBMITTALS REQUIRED BY AHJ WITHOUT ADDITIONAL EFFORTS BY DESIGN PROFESSIONAL OR ADDITIONAL COST TO OWNER.

NOTE: ANY SUBSTITUTIONS MUST BE PRE-APPROVED AS OTHERWISE OUTLINED IN CONTRACT DOCUMENTS.

PROJECT DATA

PROJECT SIZE & TYPE					
92'-0" WIDTH 50'-0" DEPTH FREE STANDING, 1 STORY MERCANTILE SPACE					
GROSS AREA				4,650 SF	
DESCRIPTION					
MERCANTILE, NEW CONSTRUCTION					
OCCUPANCY USE GROUP					
MERCANTILE, GROUP M PER FBC SECTION 3.09			MERCANTILE, CLASS B NFPA 101 36.1.2.2 (1)(a)		
OCCUPANCY LOAD PER FBC TABLE 1004.1.2					
ROOM NO.	USE	USE CLASS	SIZE SQFT	SQFT/PERSON	PERSONS
101A	MERCH.	M	2,123	60	36
101B	SEATING	A	232	15	16
102	SALES	M	198	60	4
102B	TAQUERIA	M	177	60	3
103	OFFICE	B	45	100	1
104	BACKROOM	M/S	475	300	2
105	WOMEN	M	PLUMBING FIXTURE COUNT; SHEET A1.5		
106	MEN	M	PLUMBING FIXTURE COUNT; SHEET A1.5		
107	ELECTRICAL	M/S	50	300	1
108	FREEZER	M/S	30	300	1
109	COOLER	M/S	76	300	1
110	COOLER/VAULT	M/S	369	300	2
111	UTILITY	M/S	272	300	1
112	BEER CAVE	M	251	60	5
113	CORRIDOR	M	85	60	2
TOTAL					75

EGRESS WIDTH CALCULATIONS	
75 PERSONS X 0.2"/PERSON = 15" REQUIRED	
(1) EXIT DOOR @ 34" WIDE + (1) EXIT DOOR @ 68" WIDE = 102" PROVIDED	
BUILDING CONSTRUCTION TYPE & FIRE PROTECTION	
NOT SPRINKLERED TYPE: VB PER FBC 101.1	
BUILDING HEIGHT & AREA MODIFICATIONS	
1-STORY BUILDING	
HEIGHT = 24'-8"	
AREA = (GROSS) 4,650 SF	
BUILDING CODES	
BUILDING CODE	2017 FLORIDA BUILDING CODE, BUILDING, 6TH EDITION
ELECTRICAL CODE	2014 NATIONAL ELECTRICAL CODE
MECHANICAL CODE	2017 FLORIDA BUILDING CODE, MECHANICAL, 6TH EDITION
PLUMBING CODE	2017 FLORIDA BUILDING CODE, PLUMBING, 6TH EDITION
FIRE CODE	2017 FLORIDA FIRE PREVENTION CODE, 6TH EDITION
ACCESSIBILITY CODE	2017 FLORIDA BUILDING CODE, ACCESSIBILITY, 6TH EDITION
ENERGY CODE	2017 FLORIDA BUILDING CODE, ENERGY CONSERVATION, 6TH EDITION
HEALTH DEPARTMENT	FLORIDA ADMINISTRATIVE CODE SANITATION AND SAFETY REQUIREMENTS, CHAPTER 64E-11

SUMMARY OF WORK

- GRADING & SITEWORK. (SHALL BE SUBMITTED SEPARATELY FOR PERMIT BY SITE DEVELOPER)
- CONSTRUCTION OF A ONE STORY, CONVENIENCE STORE BUILDING.
- EXTERIOR SIGNAGE. (SHALL BE SUBMITTED SEPARATELY FOR PERMIT BY SIGN VENDOR)
- SEE DRAWINGS FOR FULL SCOPE OF WORK FOR ENTIRE PROJECT. THIS SUMMARY DOES NOT CHANGE OR SUPERSEDE WHAT IS SHOWN IN DRAWINGS.

PROJECT DIRECTORY

OWNER: BLACKFIN PARTNERS INVESTMENTS, INC. 4400 PGA BLVD, SUITE 600 PALM BEACH GARDENS, FL 33410 CONTACT: SETH SWISHER PHONE: (561) 299-0036 SSWISHER@BLACKFINPARTNERS.COM	ELECTRICAL ENGINEER: CUHACI & PETERSON, ARCHITECTS ENGINEERS, PLANNERS 1925 PROSPECT AVENUE ORLANDO, FL 32814 PHONE: 407.661.9100 FAX: 407.661.9101 CONTACT: JAISON MORAS EMAIL: JAISON.MORAS@C-P.COM
ARCHITECT: CUHACI & PETERSON, ARCH. & ENG., LLC 1925 PROSPECT AVE. ORLANDO, FL 32814 PHONE: 407.661.9100 FAX: 407.661.9101 CONTACT: WADE ARNOLD PROJECT ARCHITECT EMAIL: WADE.ARNOLD@C-P.COM	MECHANICAL PLUMBING ENGINEER: CUHACI & PETERSON, ARCHITECTS ENGINEERS, PLANNERS 1925 PROSPECT AVENUE ORLANDO, FL 32814 PHONE: 407.661.9100 FAX: 407.661.9101 CONTACT: JOSE DIAZ EMAIL: JOSE.DIAZ@C-P.COM
CONSTRUCTION: 7-ELEVEN 2021 S. MACARTHUR OKLAHOMA CITY, OK 73128 CONTACT: DAN FITZGERALD PHONE: (239) 210-0455 EMAIL: DANIEL.FITZGERALD@7-11.COM	STRUCTURAL ENGINEER: HIGGENBOTHAM ENGINEERING, INC. 3222 CORRIE DRIVE, SUITE F, ORLANDO, FL 32803 PHONE: 407.286.1787 CONTACT: JUAN CANO EMAIL: JCANO@HIGGENBOTHAMENGR.COM

SHEET INDEX

TRADE	SHEET	DESCRIPTION
	A0.0	COVER SHEET
ARCHITECTURAL	A0.1	CODE COMPLIANCE INFORMATION SHEET
	A1.0	GENERAL NOTES, ABBREVIATIONS, SYMBOLS LEGEND
	A1.1	ACCESSIBILITY NOTES
	A1.2	ACCESSIBILITY DETAILS
	A1.3	ARCHITECTURAL SITE PLAN
	A1.4	DUMPSTER ENCLOSURE & DETAILS
	A1.5	EGRESS PLAN
	A1.6	CO2 SENSOR PLAN
	A2.0	DIMENSIONED FLOOR PLAN FOR WALL TYPES
	A2.1	ENLARGED RESTROOM PLAN & DETAILS
	A2.1.1	ENLARGED RESTROOM PLAN & DETAILS
	A2.2	WALL SUBSTRATE & WALL FINISH PLAN
	A2.2.1	WALL SUBSTRATE & WALL FINISH PLAN
	A2.3	REFLECTED CEILING PLAN
	A2.3.1	REFLECTED CEILING DETAILS
	A2.4	ROOF PLAN
	A2.4.1	ROOF DETAILS
	A3.0	INTERIOR ELEVATIONS
	A3.1	EXTERIOR ELEVATIONS
	A4.0	BUILDING SECTIONS
	A4.1	WALL SECTIONS
	A4.2	WALL SECTIONS
	A4.3	WALL SECTIONS
	A4.4	WALL SECTIONS
	A5.0	INTERIOR ELEVATIONS
	A5.1	INTERIOR ELEVATIONS
	A5.2	INTERIOR ELEVATIONS
	A5.3	EQUIPMENT ELEVATIONS
	A5.4	FINISH FLOOR PLAN
	A6.0	STOREFRONT, DOOR TYPES, SCHEDULES & SIGNAGE
	A6.1	MATERIALS SCHEDULES
	A7.0	DETAILS
	A7.1	DETAILS
	A7.1.1	DETAILS
	A7.2	DIGITAL MENU BOARDS INSTALLATION GUIDE & DETAILS
	A7.3	DIGITAL MENU BOARDS INSTALLATION GUIDE & DETAILS
STRUCTURAL	S001	STRUCTURAL NOTES
	S101	FOUNDATION PLAN
	S102	ROOF FRAMING PLAN
	S201	DETAILS
	S202	DETAILS
	S301	DETAILS
	S302	DETAILS
	S401	DETAILS
	S501	DUMPSTER ENCLOSURE
F&E	EF-1.0	EQUIPMENT FLOOR PLAN
	EF-1.1	EQUIPMENT SCHEDULE
	EF-2.0	COUNTER FLOOR PLAN
	EF-2.1	COUNTER SCHEDULE
	EF-L	LIGHTING PLAN AND SCHEDULE
MECHANICAL	EMS1.0	ENERGY MANAGEMENT SYSTEM
	M0.1	MECHANICAL SCHEDULES & DETAILS
	M1.0	MECHANICAL FLOOR PLAN
	M1.1	MECHANICAL ROOF PLAN
	M1.2	REFRIGERATION PIPING RISER DETAILS
	M1.3	REFRIGERATION PIPING RISER DETAILS
	M2.0	MECHANICAL SPECIFICATIONS
	M2.1	REFRIGERATION SPECIFICATIONS
	M3.0	KITCHEN EXHAUST SUBMITTALS
	M3.1	KITCHEN EXHAUST SUBMITTALS
	M3.2	KITCHEN EXHAUST SUBMITTALS
	M3.3	KITCHEN EXHAUST SUBMITTALS
	M3.4	KITCHEN EXHAUST SUBMITTALS
	M3.5	KITCHEN EXHAUST SUBMITTALS
PLUMBING	P0.1	PLUMBING NOTES, SCHEDULES AND SYMBOLS
	P1.0	DRAIN PIPING PLAN
	P1.1	WATER AND GAS PIPING PLAN
	P1.2	SLAB PENETRATION PLAN
	P1.4	PLUMBING RISERS DIAGRAMS
	P2.0	PLUMBING DETAILS & SPECIFICATIONS
ELECTRICAL	E0.1	SITE POWER PLAN
	E1.0	ELECTRICAL FLOOR PLAN
	E1.1	PANEL SCHEDULES
	E1.1.1	ONE-LINE DIAGRAM
	E1.2	ELECTRICAL SLAB PENETRATION PLAN
	E1.3	ELECTRICAL HVAC/R PLAN
	E1.4	LOW VOLTAGE FLOOR PLAN
	E1.5	LOW VOLTAGE DETAILS
	E1.6	ELECTRICAL DETAILS
	E2.0	LIGHTING PLAN
	E2.1	LIGHTING PLAN
	E2.2	INTERIOR PHOTOMETRICS
	E2.3	EGRESS PHOTOMETRICS
	E2.4	SITE PHOTOMETRICS
	E3.0	ELECTRICAL SPECIFICATIONS

1925 Prospect Ave.
Orlando, FL 32814
P (407) 661-9100
P (407) 661-9101
www.c-p.com
Florida Corporate Certificate #AA 000626



CLIENT NAME
BLACKFIN PARTNERS INVESTMENTS, INC.
4400 PGA BLVD, SUITE 600
PALM BEACH GARDENS, FL 33410

PROJECT NAME
7-ELEVEN #41795 - OCALA, FL
9000 BLOCK OF SE MARICAMP ROAD
OCALA, FL 34470



PROJECT NO.	220085
DATE	12/17/2020
DRAWN	ZNR
CHECKED	Page 10/4

A0.1