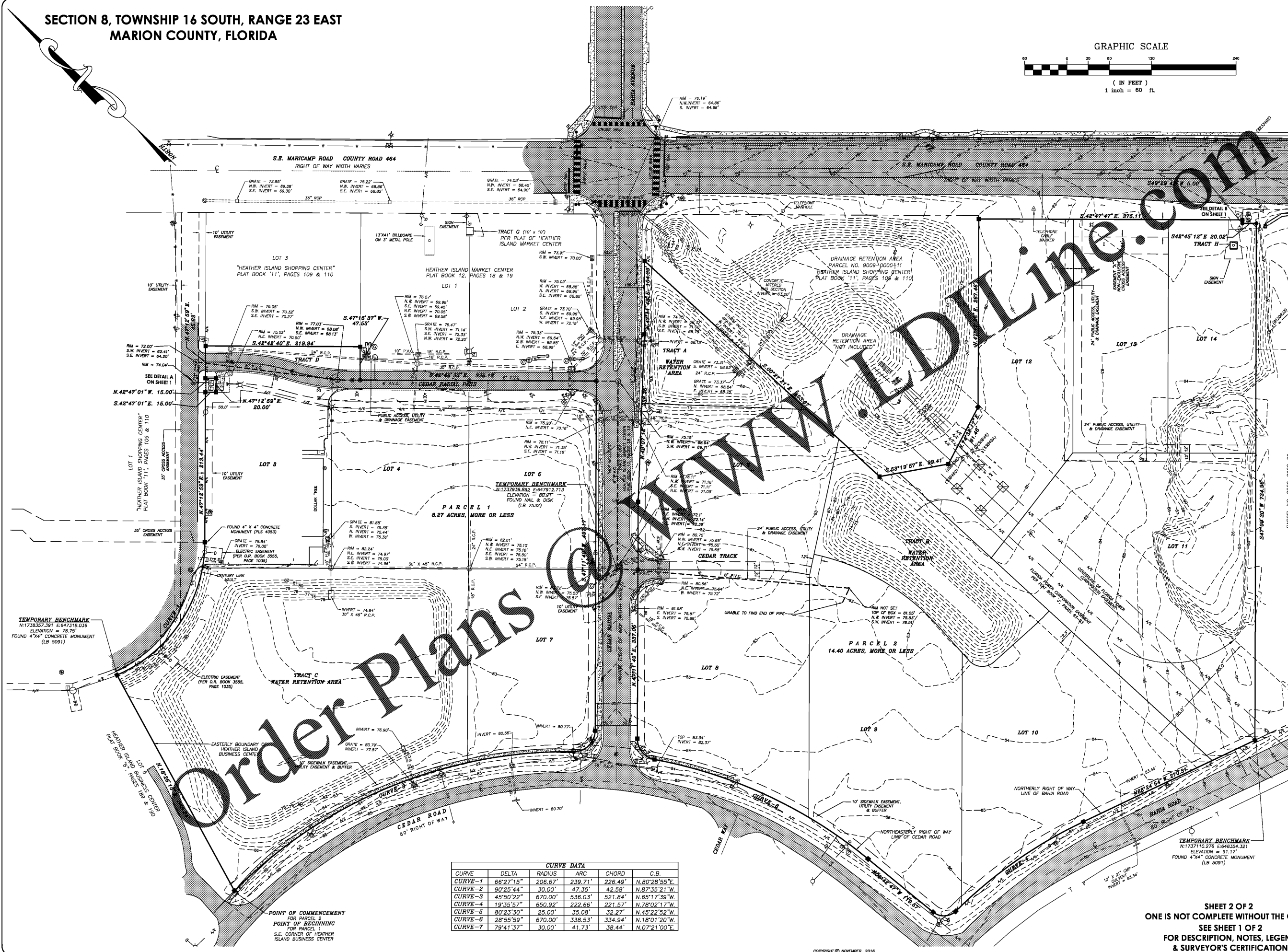
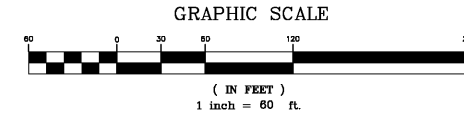


SECTION 8, TOWNSHIP 16 SOUTH, RANGE 23 EAST
MARION COUNTY, FLORIDA



Order Plans @

CURVE DATA					
CURVE	DELTA	RADIUS	ARC	CHORD	C.B.
CURVE-1	66°27'15"	206.67'	239.71'	226.49'	N.80°28'55"E
CURVE-2	90°25'44"	30.00'	47.35'	42.58'	N.87°35'21"W
CURVE-3	43°50'22"	670.00'	536.03'	521.894'	N.61°17'59"W
CURVE-4	18°35'57"	650.92'	222.66'	221.57'	N.78°02'17"W
CURVE-5	80°23'30"	25.00'	35.08'	32.27'	N.45°22'52"W
CURVE-6	28°55'59"	670.00'	338.53'	334.94'	N.18°01'20"W
CURVE-7	79°41'37"	30.00'	41.73'	38.44'	N.07°21'00"E

SHEET 2 OF 2
ONE IS NOT COMPLETE WITHOUT THE OTHER
SEE SHEET 1 OF 2
FOR DESCRIPTION, NOTES, LEGEND
& SURVEYOR'S CERTIFICATION

DRAWN:	K.L.J.
REVISED:	
CHECKED:	T.P.B.
APPROVED:	T.P.B.
SCALE:	1" = 60'

R.M. BARRINEAU AND ASSOCIATES
PROFESSIONAL SURVEYORS & MAPPERS
1308 S.E. 28th Loop, Suite 102, Ft. Lauderdale, FL 33304
TEL: (954) 545-1144 FAX: (954) 545-1171 WWW: RMBSURVEYING.COM

BOUNDARY & TOPOGRAPHIC SURVEY FOR:
MARICAMP LAND, LLC

REFERENCES:
F.B. 595

FILE: HTHR ISLAND MKT CTR