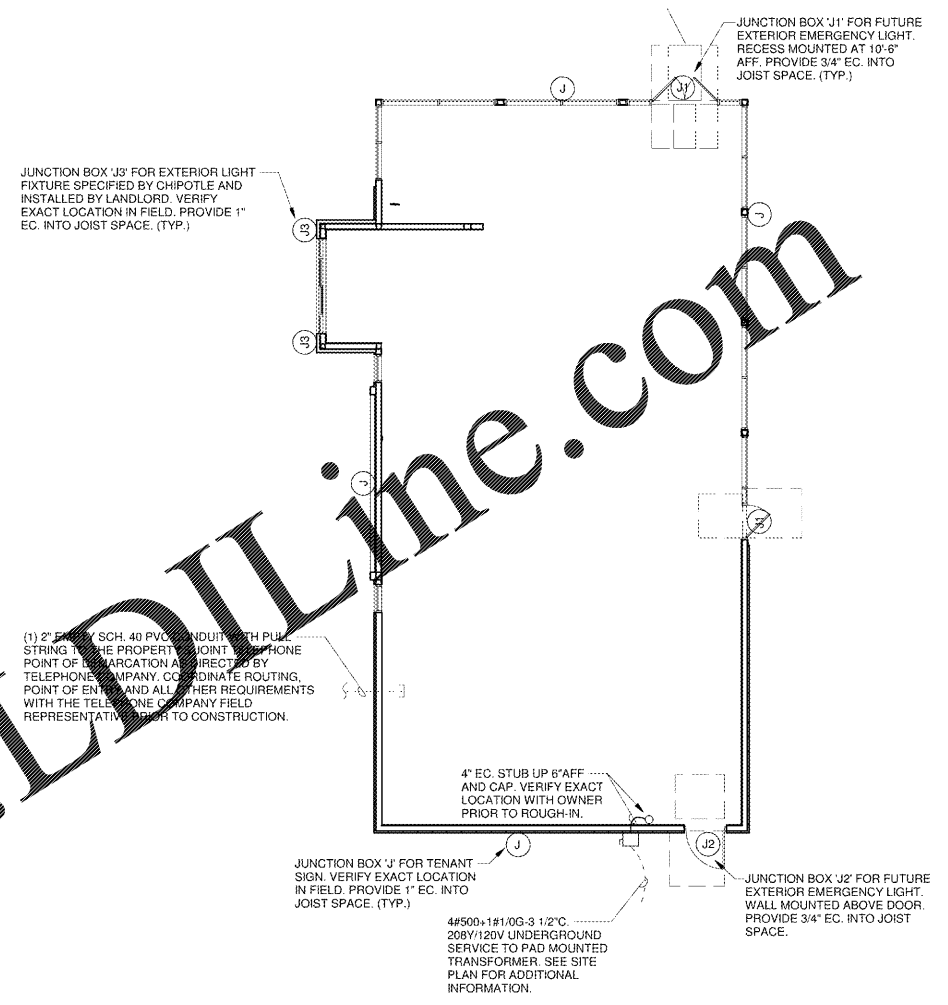


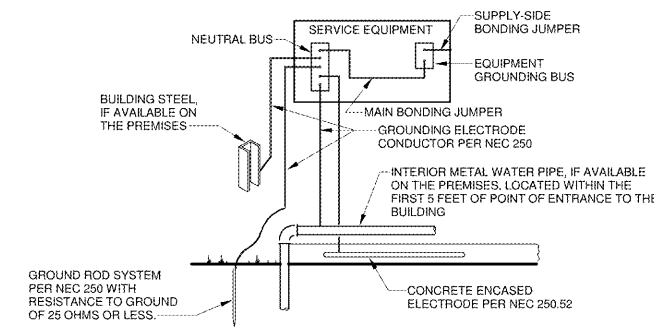
Order Plans @ www.LDILine.com

ELECTRICAL LEGEND	
	CONDUIT AND WIRE CONCEALED IN WALL OR ABOVE CEILING. SLASH MARKS INDICATE NUMBER OF #12 WIRES IN CONDUIT. EXTENDED SLASH IS NEUTRAL. ABSENCE OF SLASHES IS 2#12. SIZE CONDUIT PER NEC. EQUIPMENT GROUND REQUIRED IN PVC CONDUIT BUT NOT SHOWN. NUMBER NEXT TO SLASH INDICATES WIRE SIZE.
	CONDUIT CONCEALED BELOW FLOOR OR GRADE. CONDUITS IN SLAB SHALL HAVE MIN. 2" CONCRETE TOPPING. DOUBLE STACK RUNS WHERE APPLICABLE.
	LIGHTING FIXTURE. MOUNT AS INDICATED OR SCHEDULED. SEE LIGHTING FIXTURE SCHEDULE.
	HID LIGHTING FIXTURE. MOUNT AS INDICATED OR SCHEDULED. SEE LIGHTING FIXTURE SCHEDULE.
	OUTLET BOX OR JUNCTION BOX WITH COVER PLATE. SEE DRAWINGS FOR REQUIREMENTS.
	CONDUIT STUBBED UP.
	FIRE ALARM CONTROL PANEL.
	FIRE ALARM PULL STATION.
	FIRE ALARM WATER FLOW SWITCH.
	FIRE ALARM TAMPER SWITCH.
	FIRE ALARM SMOKE DETECTOR, CEILING MOUNTED.

ELECTRICAL ABBREVIATIONS	
AFF	ABOVE FINISHED FLOOR
AFG	ABOVE FINISHED GRADE
EC	EMPTY CONDUIT. PROVIDE PULL CORD.
EWC	ELECTRIC WATER COOLER
GFI/GFCI	GROUND FAULT CIRCUIT INTERRUPTER
NF	NON-FUSED
NL	NIGHT LIGHT. PROVIDE LOCK-ON DEVICE ON BRANCH BREAKER.
SPD	SURGE PROTECTION DEVICE. SEE SPECIFICATIONS.
WP	WEATHERPROOF DEVICE OR COVER - NEMA 3R
WG	WIRE GUARD
(N)	PLAN KEYED NOTE



1 ELECTRICAL PLAN
E1.1 1/8" = 1'-0"



2 SERVICE GROUNDING DETAIL
E1.1 12" = 1'-0"

ROBERISON LOIA ROOF ARCHITECTS & ENGINEERS
 3460 Preston Ridge Road, Suite 275, Alpharetta, GA, 30005
 770.674.2800 / www.rlrtpc.com
 GA COA #PEF00682 EXPRES. 08/30/2022



CHIPOTLE AT CARTERSVILLE
 405 E. MAIN STREET
 CARTERSVILLE, GA 30121

REVISIONS

ELECTRICAL PLAN

DATE: 12/30/20
 PROJECT NUMBER: 19303
 SHEET NUMBER: E1.1