

LIGHTING FIXTURE SCHEDULE						
TYPE	DESCRIPTION	MANUFACTURER	CATALOG NUMBER	LAMPS	VOLTAGE	WATTS
OA	AREA LIGHT, LED, POLE MOUNTED, TYPE 3 DISTRIBUTION, DARK BRONZE.	BEACON VISIONAIRE MCGRAW-EDISON	VPL-96L-315-4K7-3-UNV-08 APPROVED EQUAL APPROVED EQUAL	33,700 LUMENS	277	315

**LIGHTING FIXTURE NOTES**

- ALTERNATES / SUBSTITUTIONS: DUE TO SPECIFIC PROJECT REQUIREMENTS, ALL ALTERNATES SHALL BE APPROVED BEFORE BID. SUBMIT CUT-SHEETS AND PHOTOMETRIC FILES OF ALTERNATE LIGHT FIXTURES TO ENGINEER AT LEAST (5) BUSINESS DAYS BEFORE BID.
- LAMPS: CLEAR, LAMPS ARE REQUIRED. PROVIDE LAMPS, WITH FIXTURES, BY FIXTURE MANUFACTURER. ACCEPTABLE LAMP MANUFACTURERS ARE GE, PHILLIPS, VENTURE OR OSRAM.
- BALLASTS: STARTING CURRENT EQUAL TO OR LESS THAN OPERATING CURRENT. PROVIDE DESIGNATED VOLTAGE FOR FIXTURES SERVED BY HOUSE PANEL OR BY OTHER RETAILERS.

**LIGHTING POLE SPECIFICATION**

**POLE, PARKING AREA:**  
ROUND TAPERED STEEL 35'-0" POLE, WITH DARK BRONZE FINISH (TO MATCH FIXTURE) WITH BASE COVER, HAND HOLE WITH COVER, AND POLE TOP SUITABLE FOR FIXTURE BRACKET ARM. POLES, WITH FIXTURES, SHALL BE DESIGNED FOR 90 MPH WINDS PLUS 1.3 GUSTS. POLE MFR. SHALL PROVIDE TEMPLATE AND ANCHOR BOLTS WITH DOUBLE NUTS, SHIPPED SEPARATELY FROM POLES.

**FUSEHOLDER:**  
PROVIDE PER INSTRUCTIONS AND NOTES THIS SHEET.

**ORIENTATION:**  
ORIENT POLES AND FIXTURES AS SHOWN ON PLANS/DETAILS

**UTILITY NOTE**

UTILITIES EXIST WHICH ARE NOT SHOWN ON THE PLANS. THE CONTRACTOR SHALL BE RESPONSIBLE FOR CONTACTING ALL UTILITY COMPANIES HAVING UTILITIES WITHIN OR ADJACENT TO THE WORK AREA. THE CONTRACTOR SHALL HAVE THE UTILITIES FIELD LOCATED AND COORDINATE WITH UTILITY COMPANIES TO HAVE THEM RELOCATED WHEN NECESSARY OR ADAPTED FOR TIE-INS.

**DRIVE THRU CONDUIT NOTE**

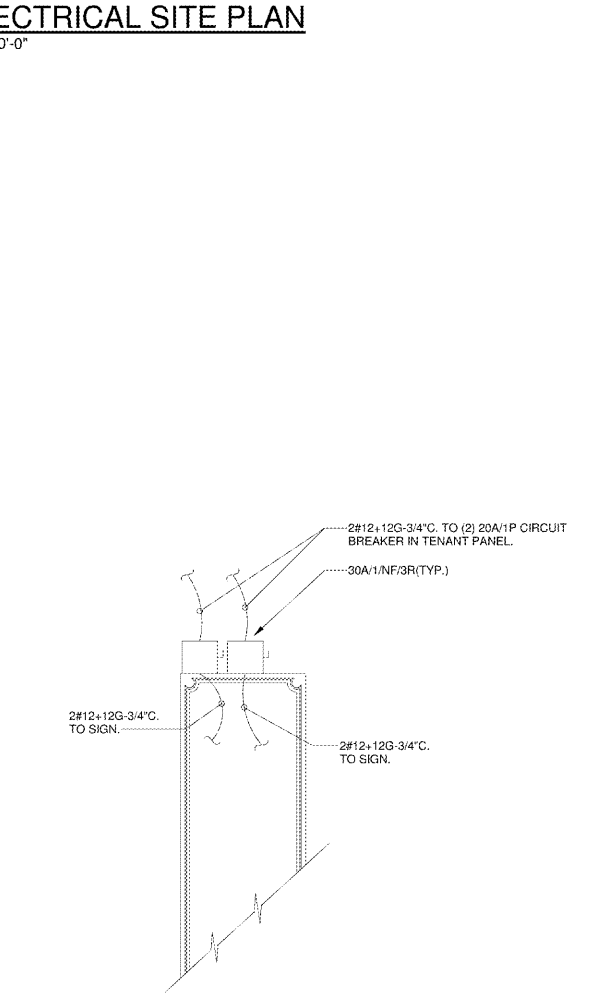
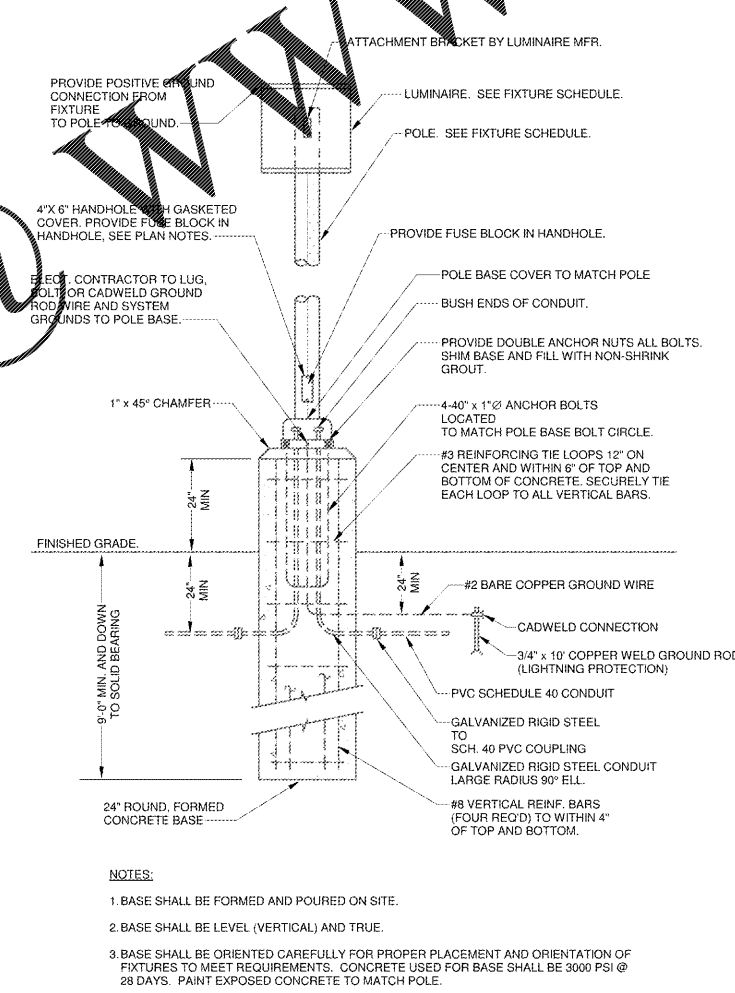
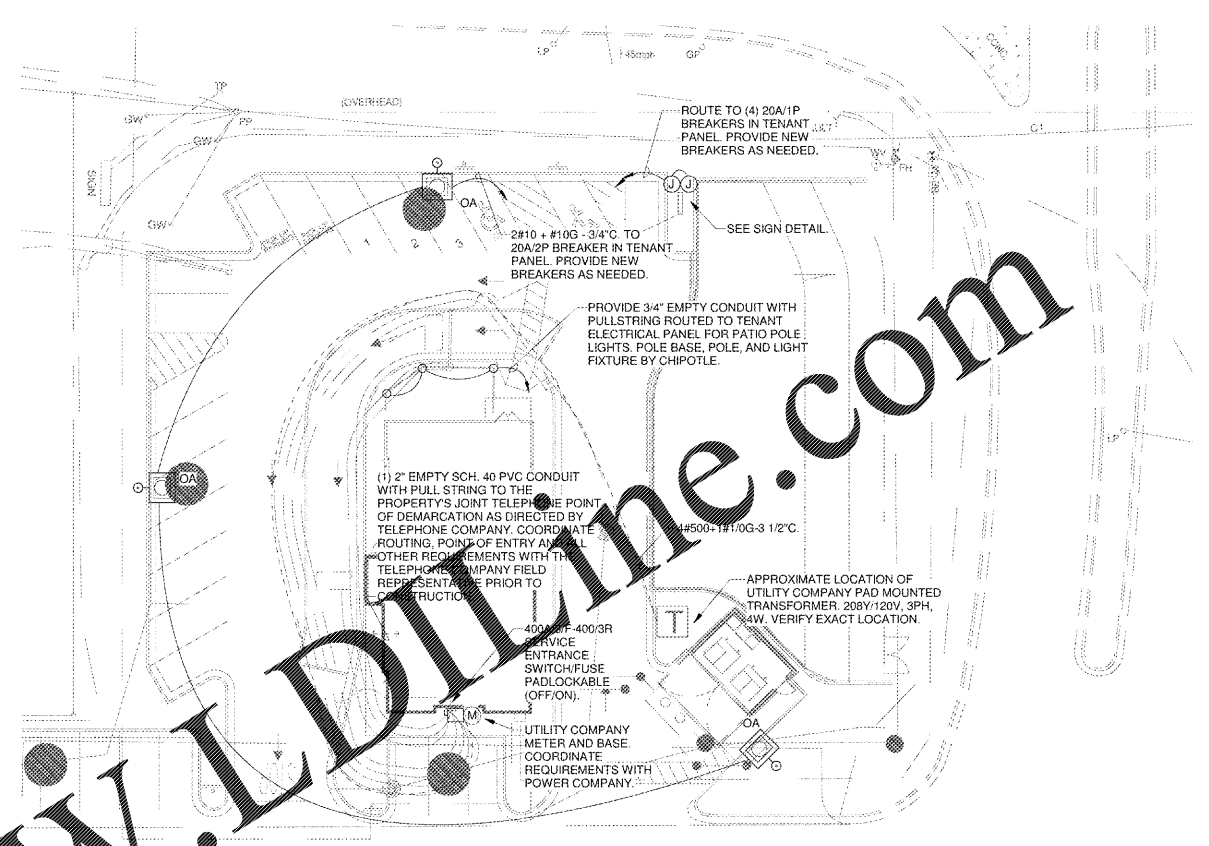
REFER TO CIVIL PLANS FOR THE DRIVE THRU CONDUITS REQUIREMENTS AND ADDITIONAL INFORMATION.

**SITE ELECTRICAL LEGEND**

- CONDUIT AND WIRE UNDERGROUND OR BELOW SLAB.
- HOMERUN TO PANEL.
- SLASH MARKS INDICATE NUMBER OF #12 WIRES IN CONDUIT. EXTENDED SLASH IS NEUTRAL AND / OR GROUND. ABSENCE OF SLASHES IS 2#12. SIZE CONDUIT PER NEC. EQUIPMENT GROUND REQUIRED IN PVC CONDUIT BUT NOT SHOWN.
- #10 INDICATES REQUIRED WIRE SIZE FOR VOLTAGE DROP OR LOAD REQUIREMENTS. INCREASES GROUND SIZE ACCORDINGLY.
- PAD MOUNT UTILITY COMPANY TRANSFORMER. PROVIDE PAD PER UTILITY COMPANY REQUIREMENTS. PROVIDE BOLLARDS AS DETAILED ON ARCHITECTURAL OR CIVIL PLANS AND LOCATE PER UTILITY REQUIREMENTS.
- METER GROUP WITH HOUSE PANEL.
- TELEPHONE CABINET.
- LIGHT POLE. SEE FIXTURE SCHEDULE AND POLE BASE DETAIL.

**SITE ELECTRICAL NOTES**

- REFER TO CIVIL PLANS FOR NAMES / ADDRESSES OF OWNER AND UTILITIES. REFER TO CIVIL PLANS FOR TYPES OF PAVING.
- PROVIDE FUSEHOLDER IN HANDHOLE OF POLE. SECURE HANDHOLE COVER. FUSEHOLDER SHALL BE BUSSMAN TYPE #1 WITH RYC WITH WEATHERPROOF BOOT AND 20 AMP "KIT" FUSE FOR EACH UNDERGROUND CONDUIT. SECURELY TAPE OVER COMPLETE HOLDER TO INSULATE FROM METAL PARTS.
- PROVIDE #12 AWG INSULATED WIRING FROM FUSEHOLDER TO FIXTURE. PROVIDE #12 GROUND FROM POLE BASE GROUND LUG TO FIXTURE HOUSING AND GROUND METAL PARTS.
- PERMANENT WEATHERPROOF LABELS SHALL IDENTIFY ALL ELECTRICAL EQUIPMENT.
- REINFORCING AND/OR DUCT WORK SHOWN SHALL NOT EXTEND BEYOND PROPERTY LINES EXCEPT UTILITY CONNECTIONS.
- TRANSFORMER PADS SHALL BE IN ACCORDANCE WITH UTILITY COMPANY REQUIREMENTS AND SHALL BE LOCATED TO MEET UTILITY COMPANY CLEARANCES.
- BALANCE LIGHTING LOADS ON CIRCUITS ACCORDING TO QUANTITIES AND FEEDER DISTANCES. ALTERNATE ON PHASES THROUGHOUT THE RUN FOR EACH BRANCH CIRCUIT.
- ALL WIRE AND CABLE SHALL BE COPPER. UNDERGROUND CONDUIT SHALL BE SCH. 40 PVC AT 30" BELOW GRADE WITH EQUIPMENT GROUND CONDUCTOR EXCEPT AS SPECIFICALLY NOTED OTHERWISE. OVERSIZE WIRING, WHERE INDICATED, IS UTILIZED FOR VOLTAGE DROP PURPOSES.
- REFER TO DETAIL AND/OR SHOPS ELECTRICAL PLANS FOR SOURCE PANELS, CIRCUITS, AND CONTROLS RELATING TO SITE LIGHTING AND PYLON POWER.
- COORDINATE THE WORK SHOWN ON THIS PLAN WITH UTILITIES AND OTHER TRADES TO AVOID INTERFERENCES AND TO ASSURE A SUITABLE INSTALLATION. ADDITIONAL COST TO THE OWNER WILL NOT BE ALLOWED FOR FAILURE TO COORDINATE.
- ALL OPEN CONDUIT ENDS SHALL BE SEALED UNTIL USED. PROVIDE PULL CORD IN EMPTY CONDUIT.
- WHERE ALLOWED BY UTILITY COMPANIES, TELEPHONE AND PRIMARY POWER CABLES MAY BE LAID IN OPEN TRENCH.



**4** **DETAIL - EXTENDED CONCRETE POLE BASE**  
3/32" = 1'-0"

**3** **DETAIL - PLAN VIEW PYLON SIGN**  
3/32" = 1'-0"

Order Plans @ www.lidline.com

**ROBERSON LOIA ROOF ARCHITECTS & ENGINEERS**  
3460 Preston Ridge Road, Suite 275 - Alpharetta, GA. 30005  
770.674.2600 / www.rlrfps.com  
GA COA #PEF00602 EXPIRES 06/30/2022



**CHIPOTLE AT CARTERSVILLE**  
E. MAIN STREET  
CARTERSVILLE, GA 30121

REVISIONS


**ELECTRICAL SITE PLAN**

DATE: **09/01/2020**  
PROJECT NUMBER: **19303**

SHEET NUMBER: **E7.1**