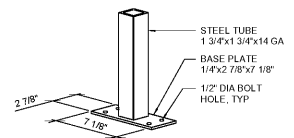


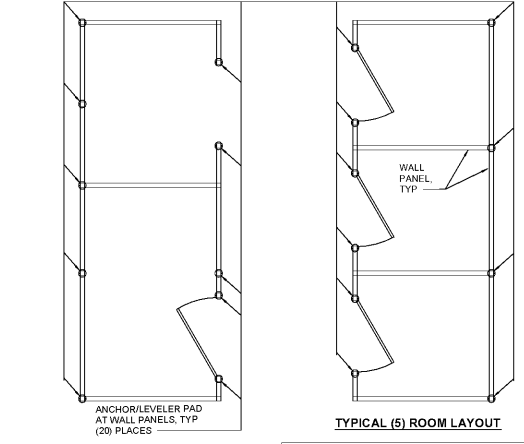
**DAMAGED ANCHOR REPAIR PROCEDURE NOTES:**

- DETERMINE DAMAGED BOLT TYPE.
  - CONCRETE SCREW BOLTS - ONLY HEX-SHAPED HEAD OF BOLT IS VISIBLE ABOVE BASE PLATE.
  - EXPANSION BOLTS - THREADED ROD AND NUT EXTEND ABOVE BASE PLATE.
- REMOVE EXISTING DAMAGED ANCHOR BOLT.
  - CONCRETE SCREW BOLTS - UNSCREW DAMAGED BOLT FROM CONCRETE SLAB.
  - EXPANSION BOLTS - AFTER REMOVING RACK FRAME, CUT BOLT FLUSH WITH CONCRETE SLAB AND DRILL OUT DAMAGED 1/2" DIAMETER BOLT WITH A 9/16" STEEL METAL DRILL BIT TO HOLE DEPTH SHOWN IN DETAIL ABOVE.
- INSTALL NEW ANCHOR BOLT.
  - IF ONLY ONE BOLT WAS INSTALLED, LEAVE THE DAMAGED BOLT IN PLACE, IF POSSIBLE, AND INSTALL A NEW CONCRETE SCREW BOLT IN THE OPEN HOLE. USE A 1/2" DIAMETER DEWALT SCREW BOLT, x 2" LONG IN THE OPEN HOLE.
  - CONCRETE SCREW BOLTS - IF A CONCRETE SCREW BOLT WAS REMOVED WITHOUT DAMAGING THE HOLE, THEN REPLACEMENT WITH A NEW CONCRETE SCREW BOLT IS ACCEPTABLE. REPLACE WITH A SCREW BOLT OF THE SAME SIZE AND TYPE. REUSE EXISTING THREADS IN HOLE. HAND THREAD BOLT UNTIL SNUG TIGHT ON BASE PLATE. REF ANCHOR BOLT DETAIL ON SHEET FXS2. IF THE HOLE IS DAMAGED, FOLLOW THE EXPANSION BOLTS PROCEDURE.
  - EXPANSION BOLTS - REPLACE DRILLED OUT EXPANSION BOLTS WITH 1/2" DIAMETER ADHESIVE ANCHORS. HOLE CLEANING PROCEDURE MUST BE FOLLOWED IN ACCORDANCE WITH THE MANUFACTURER'S DIRECTIONS. USE 1/2" DIAMETER THREADED ROD (SEE DETAIL ABOVE) WITH POWERS AC100+ GOLD ADHESIVE. INSTALL PER ICC ESR-2582.

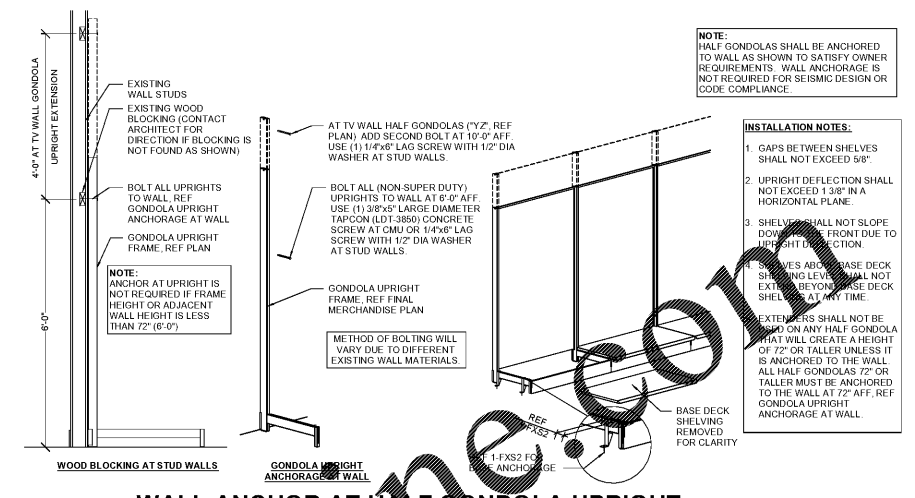
**11** TYPICAL ANCHOR REPLACEMENT AT RACK FRAMES



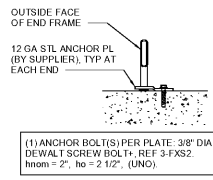
**10** TYPICAL ANCHOR AT CART RAIL POST



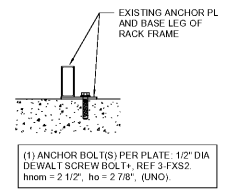
**9** TYPICAL ANCHORAGE PLAN AT CHANGING ROOM WALL PANELS



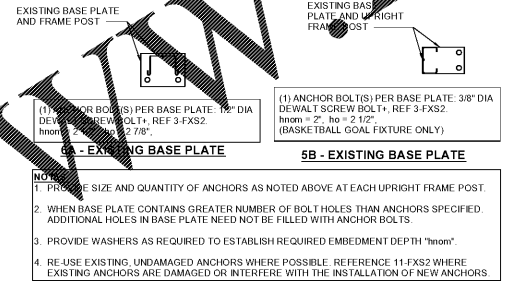
**8** WALL ANCHOR AT HALF GONDOLA UPRIGHT



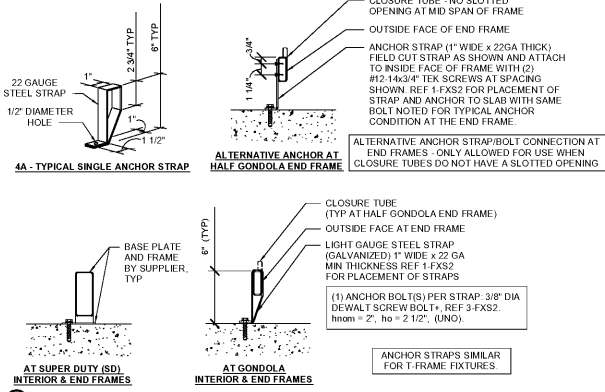
**7** ANCHOR AT END CAP FRAMES



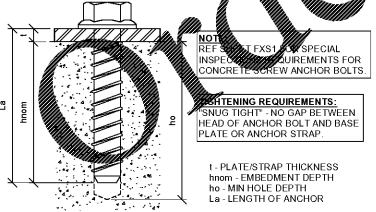
**6** ANCHOR AT EXISTING BIKE RACK



**5** TYPICAL ANCHOR AT RACK FRAMES



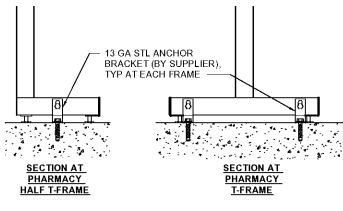
**4** TYPICAL ANCHOR AT GONDOLA FRAMES



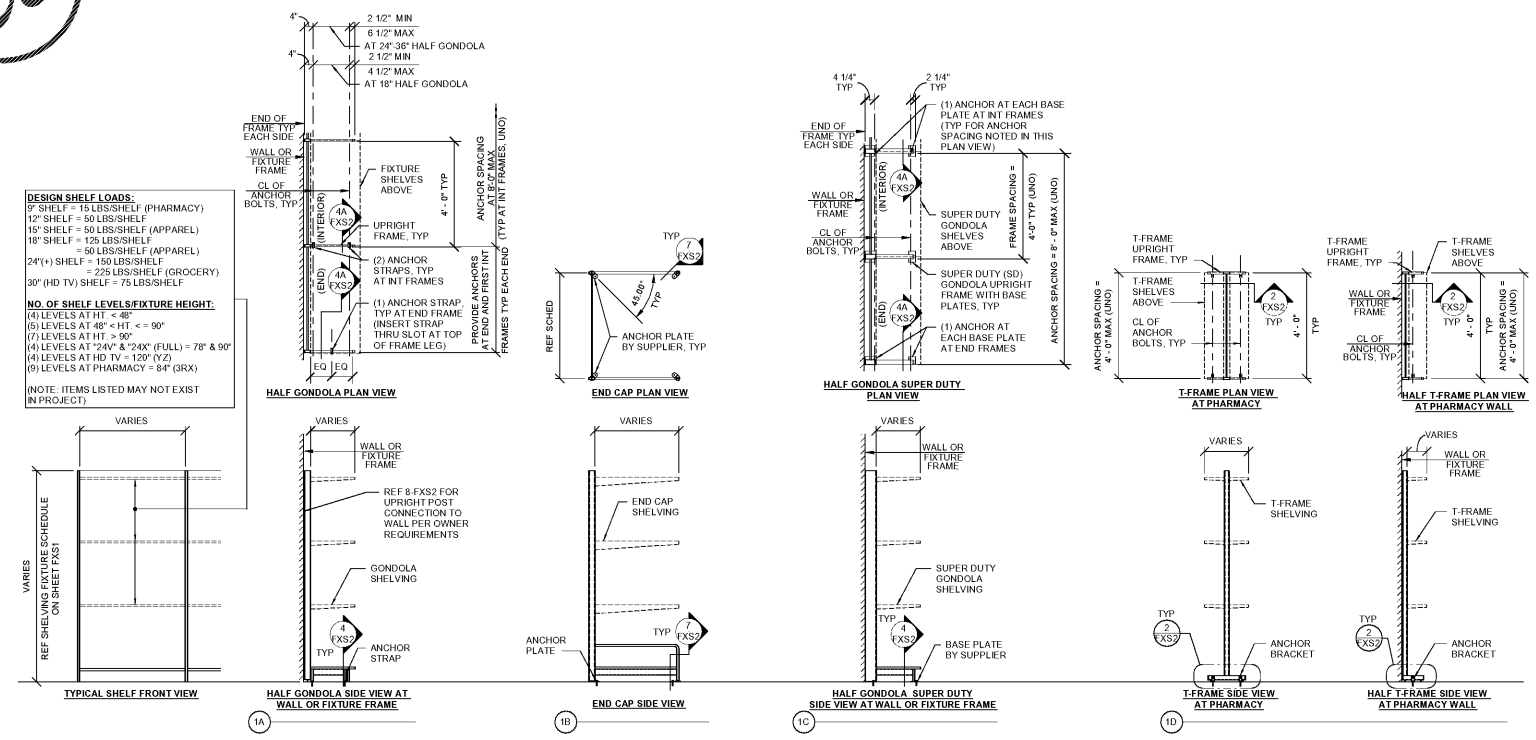
**NOTE:** ALL ANCHOR BOLTS SHALL BE DEWALT SCREW BOLT. THE ANCHORS MUST BE INSTALLED IN ACCORDANCE WITH THE MANUFACTURER'S PUBLISHED INSTALLATION INSTRUCTIONS AND PER ICC ESR-3889 REPORT. IN CASE OF CONFLICT, THE ICC (ESR-3889 GOVERNS). REF ANCHOR DETAILS FOR DIAMETER AND EMBEDMENT.

**NOTE:** IF CENTERLINE OF ANCHOR BOLTS FALLS WITHIN 1 3/4\"/>

**3** ANCHOR BOLT DETAIL



**2** TYPICAL ANCHOR AT PHARMACY T-FRAMES



**1** TYPICAL GONDOLA, PHARMACY T-FRAME AND END CAP SHELVING ELEVATIONS

**NOTE:** HALF GONDOLAS SHALL BE ANCHORED TO WALL AS SHOWN TO SATISFY OWNER REQUIREMENTS. WALL ANCHORAGE IS NOT REQUIRED FOR SEISMIC DESIGN OR CODE COMPLIANCE.

**INSTALLATION NOTES:**

- GAPS BETWEEN SHELVES SHALL NOT EXCEED 96\"/>

**ISSUE BLOCK**

NO.	DATE	DESCRIPTION

CHECKED BY: BBB  
DRAWN BY: BJJ  
PROTO CYCLE: 07/31/20  
DOCUMENT DATE: 11/20/20

NOT FOR CONSTRUCTION

FIXTURE ANCHORAGE DETAILS