

KITCHEN DEVICE SCHEDULE								
NUMBER	DESCRIPTION	MANUFACTURER	MODEL	VOLT/PHASE	AMPS	TERMINATION	MTG. HT.	NOTES
DELI EQUIPMENT SCHEDULE								
D007B	SLICER	BIZERBA	GSP HGSF HD	120/1	3.50 A	WP GFI DUPLEX, NEMA 5-20R	44"	K
D104.1	BLAST CHILLER	DESMON	GBF-15	208/3	18.00 A	WP, CONNECTOR, NEMA L15-30C	44"	K
REFRIGERATED AND HOT CASE SCHEDULE								
RD9009 - 6'	ISLAND MERCHANDISER	STRUCTURAL CONCEPTS	M46R	208/1	12.20 A	NEMA 5-20P	10"	C, K
RH0122 - 4'	4' HOT DELI SELF-SERVICE MULTI-DECK	CUSTOM DELFS	D1W-SS	120/208/3	10.00 A	WP JUNCTION BOX	12"	E, F
RH0133 - 8'	8' HOT DELI SELF-SERVICE MULTI-DECK	CUSTOM DELFS	DLW-CB-SS	120/208/3	25.00 A	WP JUNCTION BOX	12"	E, F

A. PROVIDE CORROSION RESISTANT PLUG, CONNECTOR, AND WEATHERPROOF BOOTS. CONNECTOR AND WEATHERBOOTS SHALL BE FROM THE SAME MANUFACTURER.
B. PROVIDE MATCHING CORD AND MALE PLUG.
C. WIRING DEVICE ON DROP CORD FROM CEILING. REFER TO SUSPENDED DROP CORD DETAILS.
D. WIRING DEVICE CIRCUITED TO SHUNT-TRIP BREAKER.
E. PROVIDE WEATHERTIGHT FLEX CONDUIT AND WIRING FROM DISCONNECT SWITCH OR JUNCTION BOX TO EQUIPMENT KNOCKOUT OR ELECTRICAL CONNECTION POINT.
F. MAKE FINAL CONNECTIONS TO EQUIPMENT.
G. PROVIDE CORROSION PROOF PLUGS AND RECEPTALS FOR EQUIPMENT SPECIFIED ON ELECTRICAL EQUIPMENT SCHEDULE NOTES.
H. VERIFY EXACT POINT(S) OF CONNECTION(S) AND FIELD WIRING REQUIREMENTS WITH EQUIPMENT INSTALLER.
I. IF NOT FURNISHED WITH EQUIPMENT, FURNISH AND INSTALL 6'0" LONG S&S CORDS WITH GROUNDING CONDUCTOR, SIZED AS FOLLOWS:
 5 CONDUCTORS: #8W(28A), #10W(20A), #12W(18A), #14W(12A), 4 CONDUCTORS: #4(80A), #6W(35A), #10W(25A), #12W(20A), #14W(15A).
 3 CONDUCTORS: #8W(40A), #10W(30A), #12W(25A), #14W(18A). FURNISH AND INSTALL GROUNDING TYPE ATTACHMENT CAP.
J. SEE ELECTRICAL SPECIFICATIONS FOR RECEPTACLE, CONNECTOR, AND PLUG INFORMATION. PROVIDE AS REQUIRED.
K. CORD AND PLUG FURNISHED WITH EQUIPMENT.
L. FAN CONNECTED THROUGH 120V RELAY, 10A MAX.

KEYNOTES

- 10.145 CONNECT CIRCUIT(S) TO EXISTING BRANCH CIRCUITRY. MINIMUM WIRE SIZE AND PANELBOARD CIRCUIT ARE NOTED. VERIFY SIZE, RATING AND CONDITION OF EXISTING BRANCH CIRCUIT CONDUIT AND WIRE PRIOR TO USE TO ENSURE THAT THEY MEET REQUIRED SIZE, AND ALL U.L. RATINGS AND REQUIRE AS REQUIRED.
- 10.489 RELOCATE, EXTEND, AND RECONNECT CIRCUITRY AND ELECTRICAL DEVICES FOR RELOCATED AND/OR NEW EQUIPMENT. VERIFY CONDITION OF BRANCH CIRCUITRY, CONDUIT AND WIRE TO ENSURE THEY MEET ALL U.L. RATINGS AND REPLACE AS REQUIRED. VERIFY FINAL LOCATION OF RELOCATED/NEW EQUIPMENT WITH WALMART CONSTRUCTION MANAGER PRIOR TO ROUGH-IN.
- 10.492 E.C. SHALL COORDINATE WITH GENERAL CONTRACTOR AND ARCHITECTURAL DEMOLITION PLANS THE EXTENT OF ELECTRICAL DEMOLITION. REMOVE UNUSED DEVICES, BOXES, CONDUITS, AND WIRING BACK TO ORIGINATING JUNCTION BOXES OR PANELBOARDS. REFERENCE POWER PLANS FOR CIRCUITS TO BE REUSED. DEMOLITION SHALL REMOVE ALL THE WAY TO PANELBOARD. REMOVE CIRCUIT BREAKER AND REPLACE WITH NEW PLATE. DATE TYPED WRITTEN CIRCUIT DIRECTORY IDENTIFYING CIRCUIT AS "SPACE". COORDINATE ALL REQUIREMENTS WITH EXISTING CONDITIONS PRIOR TO BID.
- 10.493 E.C. SHALL DISCONNECT, EXTEND, AND RECONNECT ALL ELECTRICAL CIRCUITRY FOR NEW OR RELOCATED EQUIPMENT. REFERENCE POWER PLANS AS APPLICABLE. VERIFY CONDITION OF BRANCH CIRCUIT, CONDUIT, AND WIRE PRIOR TO USE TO ENSURE THAT THEY MEET ALL U.L. RATINGS AND REPLACE AS REQUIRED. COORDINATE THIS PROCESS WITH CONSTRUCTION MANAGER TO MINIMIZE DOWNTIME. LABEL ALL ASSOCIATED PANELBOARD SCHEDULES TO REFLECT LOAD DESCRIPTIONS.

brr
 ARCHITECT OF RECORD:
 JOHN P. FRANK
 8121 MEDICAL AVENUE
 OVERLAND PARK, KS 66204
 www.brr.com
 TEL: 913-242-9000
 FAX: 913-242-9001

STIPULATION FOR REUSE
 THIS DRAWING WAS PREPARED FOR THE PROJECT IDENTIFIED HEREIN. IT IS THE PROPERTY OF HENDERSON ENGINEERS. IT IS TO BE USED ONLY FOR THE PROJECT AND SITE IDENTIFIED HEREIN. ANY REUSE OF THIS DRAWING FOR ANY OTHER PROJECT WITHOUT THE WRITTEN CONSENT OF HENDERSON ENGINEERS IS STRICTLY PROHIBITED. HENDERSON ENGINEERS WILL BE CONSIDERED TO HAVE ACCEPTED THE REUSE OF THIS DRAWING FOR THE PROJECT IDENTIFIED HEREIN.

HENDERSON ENGINEERS
 CONSULTANTS
 886 LEBLANC DRIVE, SUITE 300
 ATLANTA, GA 30339
 TEL: 404.521.2300 FAX: 404.521.2301
 WWW.HENDERSONENGINEERS.COM
 GA. LICENSE NO. 107189-235
 EXP. 03/31/2024

Walmart
 ATLANTA (GRESHAM)
 2427 GRESHAM RD SE 30316
 STORE NO: 137189-235
 JOB NUMBER: 216660706 | PHOTO: SPRB

ISSUE BLOCK

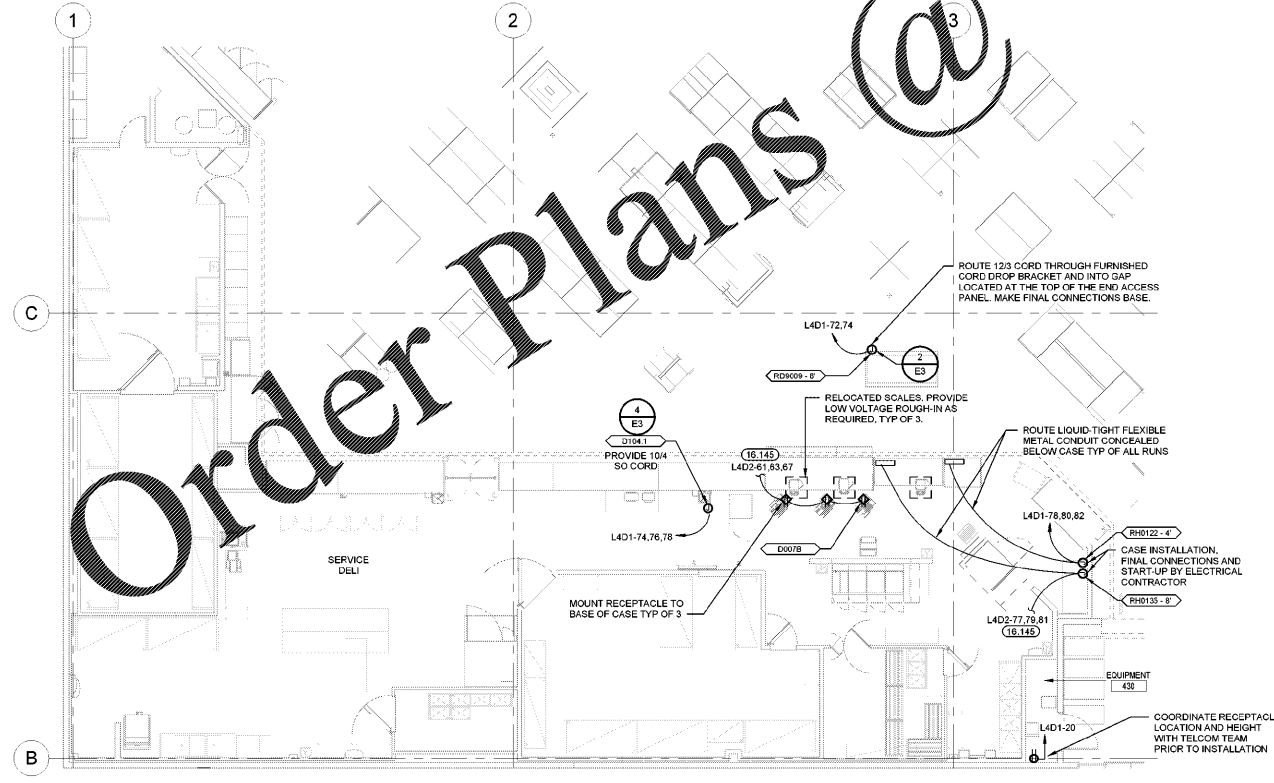
CHECKED BY: BC/BW
 DRAWN BY: JRF
 PHOTO CYCLE: 09/25/20
 DOCUMENT DATE: 11/20/20

NOT FOR CONSTRUCTION

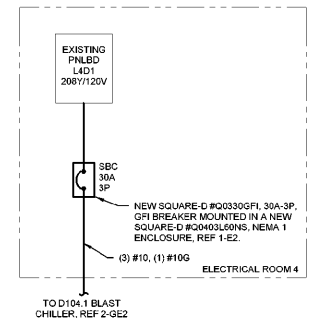
GROCERY POWER PLANS

SHEET: **GE2**

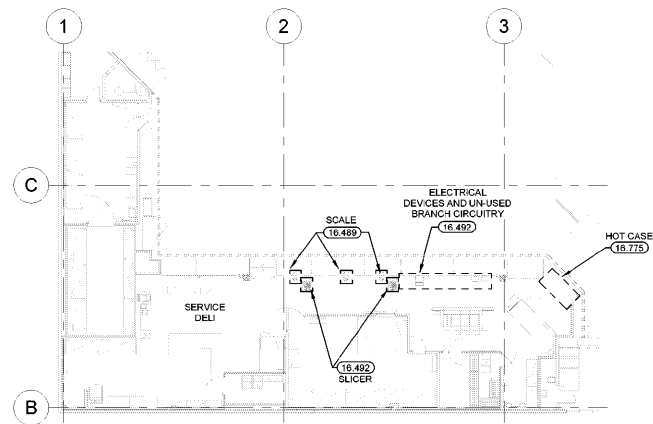
www.LDILine.com



2 GROCERY POWER PLAN
 1/8" = 1'-0"



3 PARTIAL GROCERY ONE-LINE DIAGRAM
 1/2" = 1'-0"



1 GROCERY POWER DEMO PLAN
 1/8" = 1'-0"

EXISTING CONDITIONS WERE TAKEN FROM ORIGINAL DRAWINGS AND MAY NOT REFLECT EXACT "AS-BUILT" CONDITIONS. CONTRACTOR SHALL FIELD VERIFY ALL EXISTING CONDITIONS PRIOR TO SUBMITTING FINAL BIDS. CONTRACTOR SHALL CAREFULLY COORDINATE NEW WORK AND DEMOLITION WITH ALL OTHER DISCIPLINES AND EXISTING CONDITIONS.

EACH SUBCONTRACTOR IS RESPONSIBLE FOR HAVING A THOROUGH KNOWLEDGE OF ALL DRAWINGS AND SPECIFICATIONS IN THEIR RELATED FIELD. THE FAILURE TO ACQUAINT THEMSELVES WITH THIS KNOWLEDGE DOES NOT RELIEVE THE RESPONSIBILITY OF PERFORMING THE WORK PROPERLY. NO ADDITIONAL COMPENSATION SHALL BE ALLOWED BECAUSE OF CONDITIONS THAT OCCUR DUE TO FAILURE TO FAMILIARIZE WORKERS WITH THIS KNOWLEDGE.

WILLIAM R. WINSTON