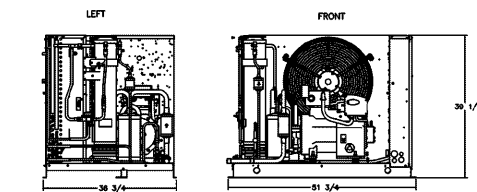
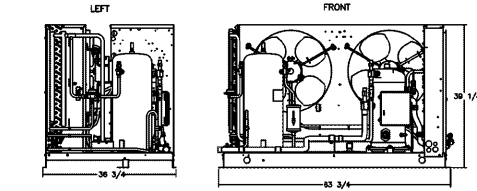


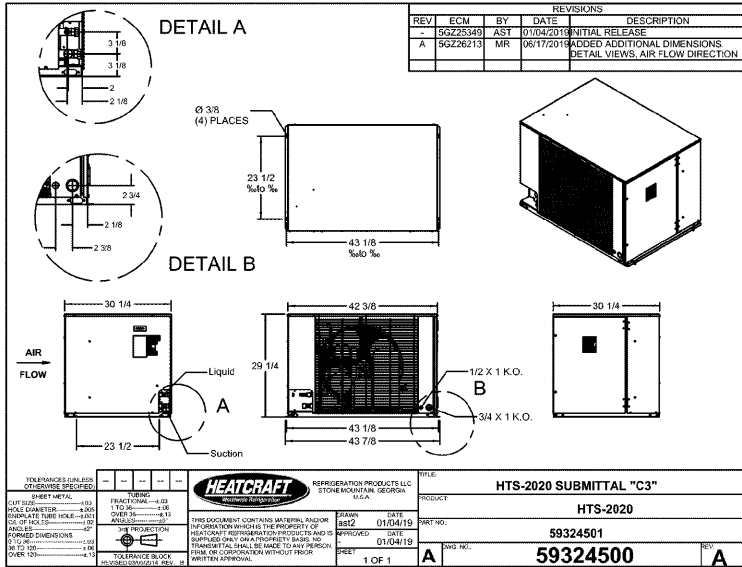
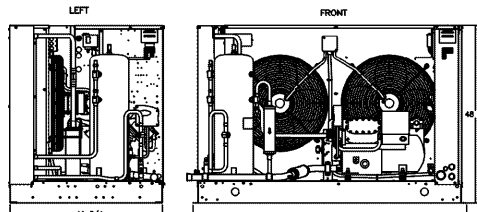
C4 CABINET



C5 CABINET



C6 CABINET



HEATCRAFT REFRIGERATION PRODUCTS LLC
HTS-2020 SUBMITTAL "C3"
 HTS-2020
 59324501
 59324500

WAL-MART Stores Inc.
 HILL PHOENIX
 708 SIGMAN ROAD
 CONYERS, GEORGIA 30182
 (770)285-3100 Fax: (770)285-3076

Store / Cust: WAL-MART 195-2004 SUPERCENTER
 Location: ATLANTA (GRESHAM), GA
 Store #: 3709
 Job #: MS30227
 Photo Directory: 9-24-04
 Prepared By: PHILLIP HERBERT Date: 1-4-05
 Field Connection: Horizontal, Vertical

Original Issue date: 7-6-05
 Printed on: 3-28-12
 Page: 4 of 4

Rev	Date	By	Revision
0	3-28-12	AGG	Rev Upgrade per Walmart Scope
1	3-28-12	AGG	Changed Ckt D13 from Spare [WDP]

Sys No	Size	Model	Heat Exchr.	Expan Valve	Diat Noz	Application	MBTUH	SST °F	Type Of Defrost	Fans	Defrost	Refrig. Valves	Est. length	Trunk Horiz	Trunk Riser	Branch Riser	Liquid Main	Liquid Bran.
D2	36"	INDL				PRODUCE WIMSTERS	57.0	+21	OC	5.4	115T	ME19	SORIT20	241	2	1	5.5	7/8
D3	18x42x12	Q2WKE2108	HXR250A	EGSE 2C	E2 1/2	MEAT/DEL COOLER	42.0	+22	ELEC	8.8	208H	ME14	SORIT20	82	1	5/8	1.3	7/8 1/2
D4	40"	QDR114UN				MD BEER	52.6	+30	OC	6.0	116H	ME19	SORIT20	130	2	1	3.5	7/8
D5	28"	OSDM				MD DAIRY	49.0	+22	OC	5.0	115H	ME14	SORIT20	96	1	5/8	1.5	7/8
D6	24"	OSDM				MD DAIRY	34.3	+22	OC	4.0	116H	ME14	SORIT20	119	2	3/8	1.1	7/8
D7	22x22x11	QIADT312AJ	HXR250A	SSSE 4C	L 3	2/3 DAIRY COOLER	61.6	+27	OC	21.6	115H	ME19	SORIT15	186	1	1/8	1.1	7/8 1/2
D8	22x22x11	ADT312AJ	HXR350A	SSSE 4C	L 3	1/2 DAIRY COOLER	59.8	+27	OC	10.8	115H	ME14	SORIT15	262	1	1/8	1.1	7/8
D9	18x22x11	QISM200A	HXR25	EGSE 1C	L 1	DAIRY COOLER	26.4	+27	OC	12.6	115H	ME19	SORIT20	245	1	7/8	3/8	7/8 1/2
D10	24"	OSDR				MD REAR LOAD DAIRY	34.1	+22	OC	5.0	116H	ME14	SORIT20	225	1	1/8	1.1	7/8
D11	20"	OSDR				MD REAR LOAD DAIRY	28.4	+22	OC	4.5	116H	ME14	SORIT20	262	1	1/8	1.1	7/8
D12	12"	OSDM				MD DAIRY	17.2	+22	OC	2.0	116H	ME6	SORIT15	277	1	3/8	1.1	5/8
D13	36"	INDLN				MD BEER	45.6	+28	OC	3.0	115H	ME19	SORIT20	38	1	1/8	1.1	7/8

Model No: PS425SMRAD RACK D

Compressor	Kit Number	Capacity MBTUH	Suction Temp	Condensing Temp	Condenser Air Flow	Req'd MBTUH (Main)	Req'd MBTUH (Spare)	Refrig. Valves	Refrig. Oil	Refrig. Oil (Spare)	Kit Number	Refrig. Oil (Spare)
06DR725	10645	189.7	+19	+19	119	527.0	572.4	ME19	572.4	572.4	0305	572.4

Notes:
 * 3/8" FILTER IN OIL RETURN LINE OFF OIL RESERVOIR
 * ALL SOLENOID VALVES TO HAVE SCHRAEDER VALVES ON OUTLET
 * 3/8" CHARGING VALVE LOCATED ON SUCTION AND LIQUID LINES PRIOR TO DRIER OR FILTER
 * MOUNT SIGHT GLASS VERTICALLY
 * DANFOSS OIL PRESSURE CONTROL - MP54-00B2008 HP #83111
 * DANFOSS HIGH PRESSURE CONTROL - KPUB6-060-5603 HP #93100
 * DANFOSS LOW PRESSURE CONTROL - KPUB2-660-5602 HP #93058
 USE ONLY VIRGINIA KMP EMKARATE LE68H1 POE OIL (OR EQUIVALENT) WITH CARLYLE RECIPROCATING COMPRESSORS

Bohn RCU 1 BCH005MDACZ

Bohn RCU 2 BCH005MDACZ

Bohn RCU 3 BCH005MDACZ

REFRIGERATION SCHEDULE SYSTEM RACKS

Form:	Supercenter:	Store #:	System Type:	Compressor Model:	Refrigerant:	Rolling DEM:	Condenser Type:	Heat Reclaim Mode:	SQ1 Refrig. Liquid Temp (°F):	SQ2 Refrig. Liquid Temp (°F):	SQ3 Refrig. Liquid Temp (°F):	EXTERIOR DRY BULB (DB) (°F):	EXTERIOR WET BULB (WB) (°F):
Form:	Supercenter:	Store #:	System Type:	Compressor Model:	Refrigerant:	Rolling DEM:	Condenser Type:	Heat Reclaim Mode:	SQ1 Refrig. Liquid Temp (°F):	SQ2 Refrig. Liquid Temp (°F):	SQ3 Refrig. Liquid Temp (°F):	EXTERIOR DRY BULB (DB) (°F):	EXTERIOR WET BULB (WB) (°F):

Case	Length	Quantity	Case/Cool Model	Case/Cool Manuf.	Application	LNKX Y or N?	Evaporator Coil TVJ / Distributor Nozzle	Sub-Circuit Load (MBH)	Circuit Load (MBH)	Evap SBT	Case Walk-In Air Temp	Circuit Control Valves	Defrost Type	Defrost Heaters	Fans	Lights Amps	Air-Switch Amps	Comments	Equip Number	CKT #
C1	32			CHRM	M.D. Meat			45.9	17			OT								C1
C2	32			CHRM	M.D. Meat			45.9	17			OT								C2
C3	241	END		ONJUMBM	Promo Island			29.9	22			OT								C3
C4	20			BS14UN	M.T. Cakes			20.0	20			OT								C4
C5	36				Produce Cooler W/L			19.8	27			OT								C5
C6	13				Bakery Cooler W/L			10.0	25			OT								C6
C7	14				Foultry/Deli Cooler			14.7	22			EL	11.4	208H	1					C7
C8*					SPARE STUB															C8*
C9*	30 FT			ONSDMX-NRG	HILL PHOENIX INC.			36.0	28	31	CDST-6	E9	OT		1.9	120V	0.4			C9*
C10.1*	12 FT			SBMT	HUSSMANN			5.0	18	24	CDST-4	B3	OT		1.7	120V	0.5			C10.1*
C10.2*	9 FT			ONSDMX-NRG	HILL PHOENIX INC.			9.8	28	31	CDST-4	E5	OT		0.5	120V	0.1			C10.2*
C11*					SPARE STUB															C11*
C12	36			OSEM	M.D. Deli			55.1	17			OT								C12
C13	24			OSEM	M.D. Deli			36.7				OT								C13
C14	20 FT			OSEM	M.D. Deli			28.8	22	30		OT			1.6	120V	3.5			C14
C15	12' Z ENDS			NF-ANR-E	M.T. Coffins Wraps			10.4	15			EL	24.1	208H	5.0	120V				C15
C16*	6 FT			TDMM	HUSSMANN			6.3	26	33	CDST-4	E3	OT		0.5	120V				C16*
C17	8			BWS-S&MT-TOP	M.T. Service Seatool			5.0	20			OT								C17

General Notes:
 1.) Owner's designated refrigeration equipment manufacturer: Kyron/Waters
 2.) The scheduled data for existing to remain components, circuit loads, and electrical conditions are reproduced from original design documents and may not reflect exact as-built conditions.
 3.) Contractor shall verify existing status of data shown for modified racks and notify engineer of any discrepancies.
 4.) OEM to ensure adequate size of compressors and condenser to meet 105% NRE at the scheduled ambient temperature conditions above.

Order Plans @ WWW.WWINDLINE.COM

brr
 ARCHITECT OF RECORD:
 DOWN P. FRANK
 8111 MEDFORD AVENUE
 OVERLAND PARK, KS 66204
 www.brr.com
 TEL: 913-342-9000
 FAX: 913-342-9004

STIPULATION FOR REUSE
 THIS DOCUMENT AND THE INFORMATION CONTAINED HEREIN IS THE PROPERTY OF BRR AND IS TO BE USED ONLY FOR THE PROJECT AND SITE SPECIFICALLY IDENTIFIED HEREIN. IT IS NOT TO BE REPRODUCED, COPIED, OR TRANSMITTED IN ANY FORM OR BY ANY MEANS, ELECTRONIC OR MECHANICAL, INCLUDING PHOTOCOPYING, RECORDING, OR BY ANY INFORMATION STORAGE AND RETRIEVAL SYSTEM, WITHOUT THE WRITTEN PERMISSION OF BRR.

CONSULTANTS
 2186605706 PHOTO: 2186605706

Walmart
 ATLANTA (GRESHAM)
 2427 GRESHAM RD SE 30316
 STORE NO: 03709-233

GENERAL REMODEL

ISSUE BLOCK

CHECKED BY: ..
 DRAWN BY: ..
 PHOTO CYCLE: 09/25/20
 DOCUMENT DATE: 11/20/20

NOT FOR CONSTRUCTION

NOTE: THIS SHEET FOR INFORMATION ONLY

REFRIGERATION SUBMITTALS

SHEET: **R3**

OEM SUBMITTALS TO BE ADDED ONCE RECEIVED

EXISTING CONDITIONS WERE TAKEN FROM ORIGINAL DRAWINGS AND MAY NOT REFLECT EXACT "AS-BUILT" CONDITIONS. CONTRACTOR SHALL VERIFY ALL EXISTING CONDITIONS PRIOR TO SUBMITTING FINAL BIDS. CONTRACTOR SHALL CAREFULLY COORDINATE NEW WORK AND DEMOLITION WITH ALL OTHER DISCIPLINES AND EXISTING CONDITIONS.

EACH SUBCONTRACTOR IS RESPONSIBLE FOR HAVING A THOROUGH KNOWLEDGE OF ALL DRAWINGS AND SPECIFICATIONS IN THEIR RELATED FIELD. THE FAILURE TO ACQUAINT THEMSELVES WITH THIS KNOWLEDGE DOES NOT RELIEVE THE RESPONSIBILITY OF PERFORMANCE. COMPENSATION SHALL BE ALLOWED BECAUSE OF CONDITIONS THAT OCCUR DUE TO FAILURE TO FAMILIARIZE WORKERS WITH THIS KNOWLEDGE.