

BAS EQUIPMENT SALVAGE REQUIREMENTS

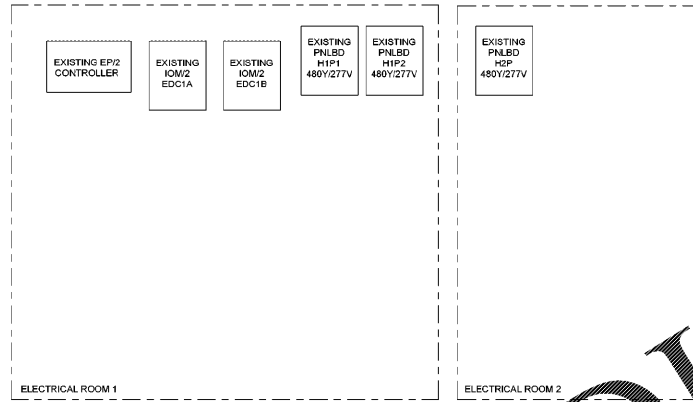
ALL DEMOLISHED NOVAR BAS EQUIPMENT SHALL BE RETURNED TO WALMART MECHANICAL SERVICES CONSTRUCTION MANAGER...

GENERAL BAS NOTES

- 1. TEMPERATURE AND CO2 SENSOR MOUNTING: PROVIDE 1/2" CONDUIT AND INSTALL BAS CABLE FROM SENSOR TO CONTROL MODULE...

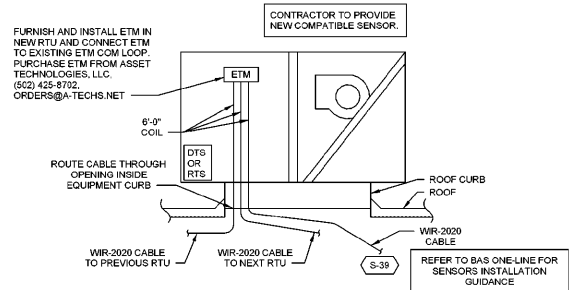
CONTROL INFORMATION

Table with 5 columns: DESCRIPTION, TYPE, ON/OFF OUTPUT, ON/OFF PROGRAMMING, ROP INPUT/ PROGRAMMING



WIRE LEGEND

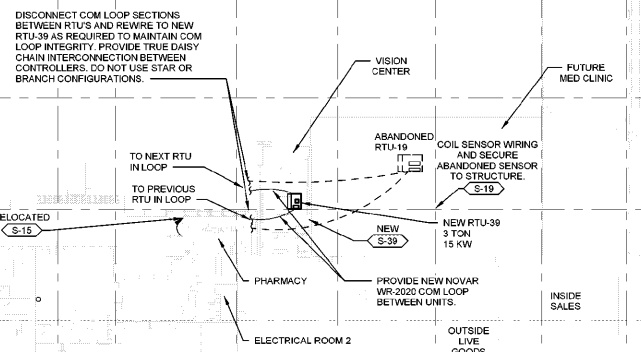
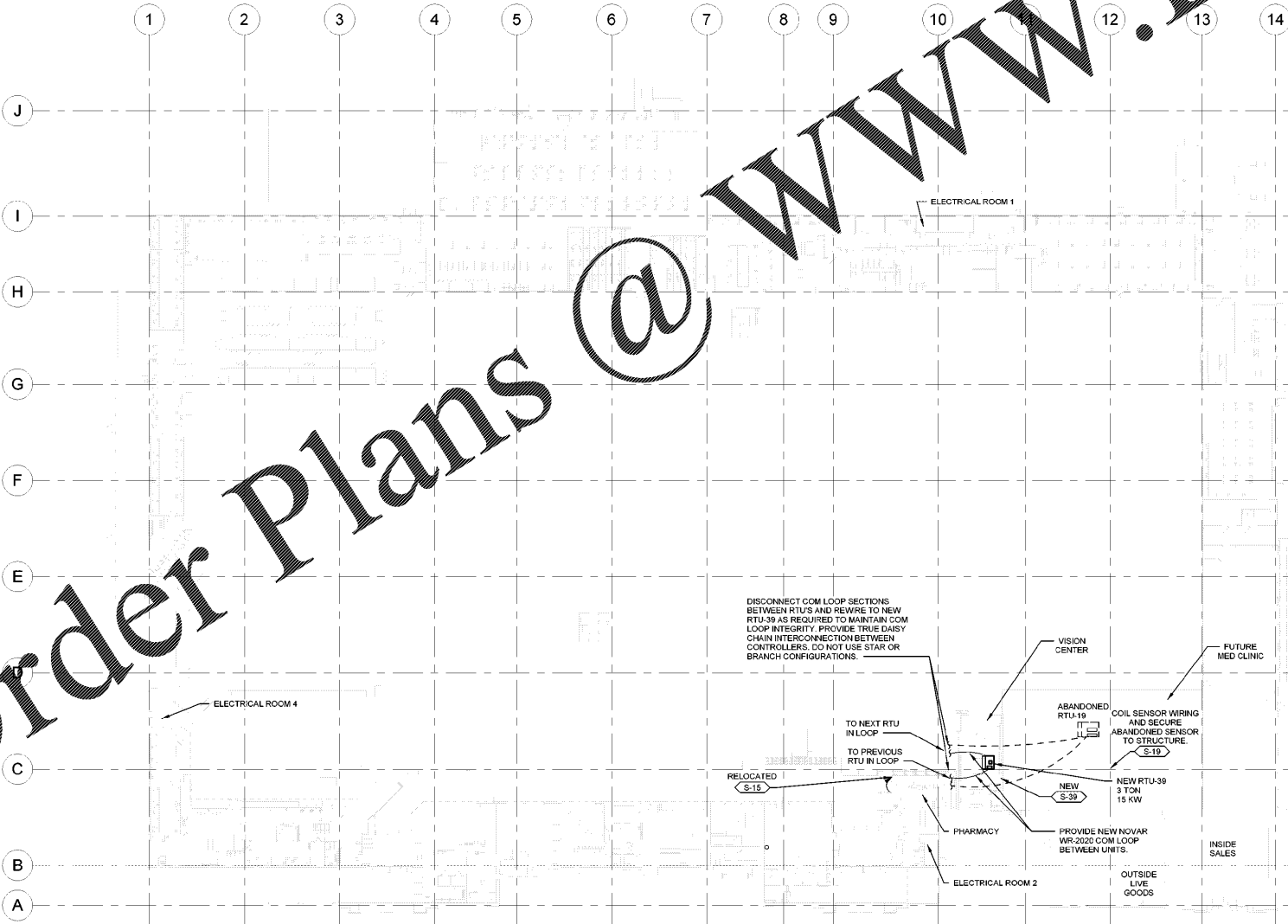
- WIR-1010 (TAN CABLE 18-2, 20-2 TWISTED PAIR)
WIR-2020 (BLUE CABLE 22-2 TWISTED PAIR)
BELDEN 8719 (18-2 TWISTED PAIR)...



3 RTU SENSOR & WIRE DETAIL - ETM

2 PARTIAL BAS ONE-LINE

Order Plans @



FURNISH AND INSTALL ETM IN NEW RTU AND CONNECT ETM TO EXISTING ETM COM LOOP...

NOTE: ALL WORK ON THIS SHEET IS TO BE COMPLETED BY A WALMART APPROVED CONTRACTOR

EXISTING CONDITIONS WERE TAKEN FROM ORIGINAL DRAWINGS AND MAY NOT REFLECT EXACT 'AS-BUILT' CONDITIONS...

BAS SYMBOLS

Table of BAS symbols including AHUC, AHU9P, ALS, ETM, IDS, IHS, ITS, ODS, OTS, S-X, SH, HS-X, RTUC, EICB, BAP, CO2, FDI, HIR, IAO, IFP, IOM, IR, CR, MIND, PLM, PSCP, PSP, ROP, ELDP, UCM, ES1, LINGO EP2, LINGO XE, LCD, NOS, S, and various line styles for equipment types.

brr ARCHITECT OF RECORD: DOHN P. FRANK, 8111 MEDICAL AVENUE, OVERLAND PARK, KS 66204

STIPULATION FOR REUSE: THIS DRAWING WAS PREPARED FOR THE PROJECT AND SITE SPECIFIC CONDITIONS...

HENDERSON CONSULTANTS: 886 LEBLANC DRIVE, SUITE 300, ATLANTA (GRESHAM), GA 30316

ISSUE BLOCK table with columns for issue number, description, and status.

CHECKED BY: BC/BW, DRAWN BY: JRF, PROTO CYCLE: 09/25/20, DOCUMENT DATE: 11/20/20

NOT FOR CONSTRUCTION

BUILDING AUTOMATION SYSTEM

novar.

SHEET: BAS1